

# Canolbarth a Gorllewin Cymru Iachach A Healthier Mid & West Wales

## Grŵp Cyfeirio Rhanddeiliaid - Stakeholder Reference Group

15fed Dachwedd 2022 - 15<sup>th</sup> November 2022



## Presentation contents

- Update on PBC
- Update on Land Selection
- Update on Land Consultation
- Next Steps

# Diweddariad ar achos busnes y rhaglen

# Update on Programme Business Case



## Update on PBC

- 26<sup>th</sup> May, 2022 Infrastructure Investment Board (IIB) to discuss PBC with Welsh Government
- Output of the land site appraisals presented to 4<sup>th</sup> August 2022 Board
- The Board, at its public meeting in August 2022, considered the evidence provided through the appraisal work streams in relation to the five shortlisted sites, alongside the opinion of the Hywel Dda Community Health Council, and the Health Board's strategic objectives and determined that 3 sites should be taken forward for further consideration, and that **formal consultation** will be undertaken (namely, site 12 and site C, at Whitland, and site 17 at St Clears), to determine the opportunities and impacts of the remaining sites on its citizens
- End August 2022 formal feedback on the PBC from WG
  - Jointly commission an independent review of the Clinical Model – best practice in process agreeing terms of reference for this commission
  - Prepare a Strategic Outline Case – currently agreeing the scope of this work

## Update on PBC

- Other work progressed
  - Land consultation
  - Further technical evaluation of 3 sites to enable the development of heads of terms, options to purchase etc to secure the land. This will involve gathering further technical information associated with the sites, and the development of information to support any planning activities.

# Diweddariad ar y broses o ddewis tir

# Update on land selection



## Land Selection - Appraisal

Technical Land  
Appraisal

Clinical Land  
Appraisal

Economic  
& Financial Land  
Appraisal

Workforce Land  
Appraisal

Board 4/8/22

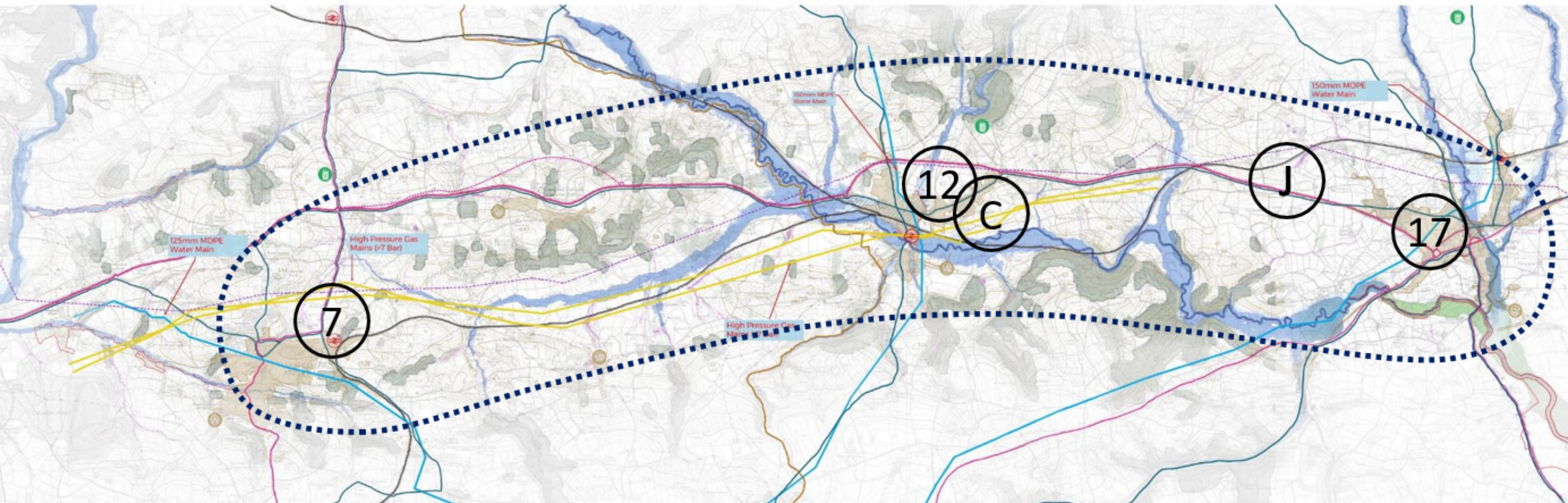


## Land appraisal matrix

	Site 7 Narberth	Site 12 Whitland	Site C Whitland	Site J St Clears	Site 17 St Clears
Technical Appraisal	365	373	366	334	372
Clinical Appraisal (Neonates, Obstetrics & Paediatrics)	Concern that the zone would present a clinical risk to the delivery of services due to reduction in birth numbers, neonatal admissions (including days of respiratory care provided), and acute paediatric admissions			Of the zone, the East presented the least clinical risk to services. The attendees of the clinical appraisal workshop were of the opinion that a site further east to the proposed zone would be preferable	
Clinical Appraisal (Stroke)	Any area of the zone would be suitable due to the focus on how patients are treated beyond their initial admission A Central or East site would be more preferable due to access to workforce				
Workforce Appraisal	All evidence shows that there is very little difference across all acute sites in terms of recruitment. The workforce appraisal has found it inconclusive to say that a site further East in the zone will have a greater impact to secure a sustainable workforce				
Finance & Economic Appraisal (cost & % differential from Site 12)	£26.9m 35%	£19.9m 0%	£28.2m 42%	£24.5m 23%	£20.7m 4%
Technical Risk Score	164	145	144	171	145

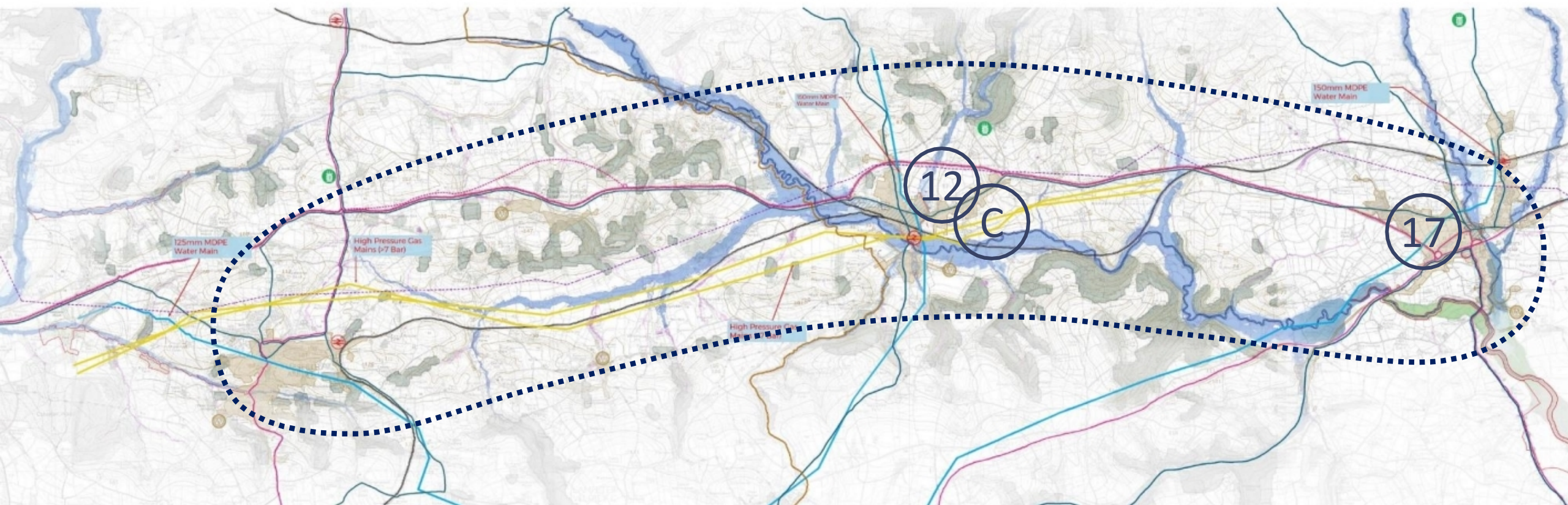


## The “Zone” and shortlisted sites





## The “Zone” and Board decision on 4<sup>th</sup> August 2022



## Quality Assurance Certification

Extract from the Consultation Institute letter

‘an open and transparent process that has been conducted to a high standard.’



### Best Practice Proposal Development and Appraisal Process

### Hywel Dda University Health Board A Healthier Mid and West Wales

This is to certify that the site identification and appraisal process for the proposed new Urgent and Planned Care Hospital has been assessed against the Consultation Institute's quality assurance criteria and awarded best practice recognition.

Paul Parsons



On behalf of The Consultation Institute  
July 2022

## Further technical evaluation

### Land Acquisition

- Development of heads of terms, options to purchase

### Technical Support

- Access/highways surveys
- Drainage & utilities surveys
- Hydraulic modelling and assessments
- High level traffic impact assessments
- Appoint Planning Consultant
- Appoint Design Champion



# Ymgynghoriad Tir

# Land Consultation



## Mandate of the consultation

The purpose of consultation is to enable the Board to make a formal decision on:

- **Land selection for the Urgent and Planned Care Hospital in the South of Hywel Dda** – the land site(s) to progress to the outline business case stage of the strategic programme for the development of the new Urgent and Planned Care Hospital.

## Scope of the consultation

Hywel Dda University Health Board will undertake a formal consultation exercise with the public, its staff, statutory stakeholders, wider stakeholders, and targeted groups most impacted / affected by its proposals. We will ensure equality of opportunity to engage between people who share a protected characteristic and those who do not. The Health Board will engage all key stakeholders (the consultees) identified through stakeholder analysis to understand the views on the following issue:

### Land selection for the Urgent and Planned Care Hospital in the South of Hywel Dda UHB

The following matters have not yet been decided and are **open to influence** in the consultation, so we want to gather views on:

- **The suitability of each of the three site options for the new urgent and planned care hospital**
- **The positive and negative impacts associated with each of the three site options for the new urgent and planned care hospital**

## Matters excluded from the consultation scope

The following matters have been decided and are **not open to influence** in the consultation:

- **The three site options for the new urgent and planned care hospital determined via the land appraisal process and agreed by the Board in August 2022**
- **The service models and vision for services set out in the 2018 Health and Care Strategy “A Healthier Mid and West Wales – Our Future Generations Living Well”, and our programme business case approved by the Board in January 2022, summarised as follows:**
  - **Three main hospitals:**
    - A major new urgent and planned care hospital centrally located somewhere between Narberth and St. Clears
    - Bronglais General Hospital, Aberystwyth, will continue to provide acute hospital services for mid Wales as set out in the strategy "Delivering Excellent Rural Acute Care", published in 2021
    - Prince Philip Hospital, Llanelli, with acute medicine retained
  - **Two repurposed hospitals, which will offer a range of community services to support the social model for health and well-being:**
    - Glangwili Hospital, Carmarthen
    - Withybush Hospital, Haverfordwest

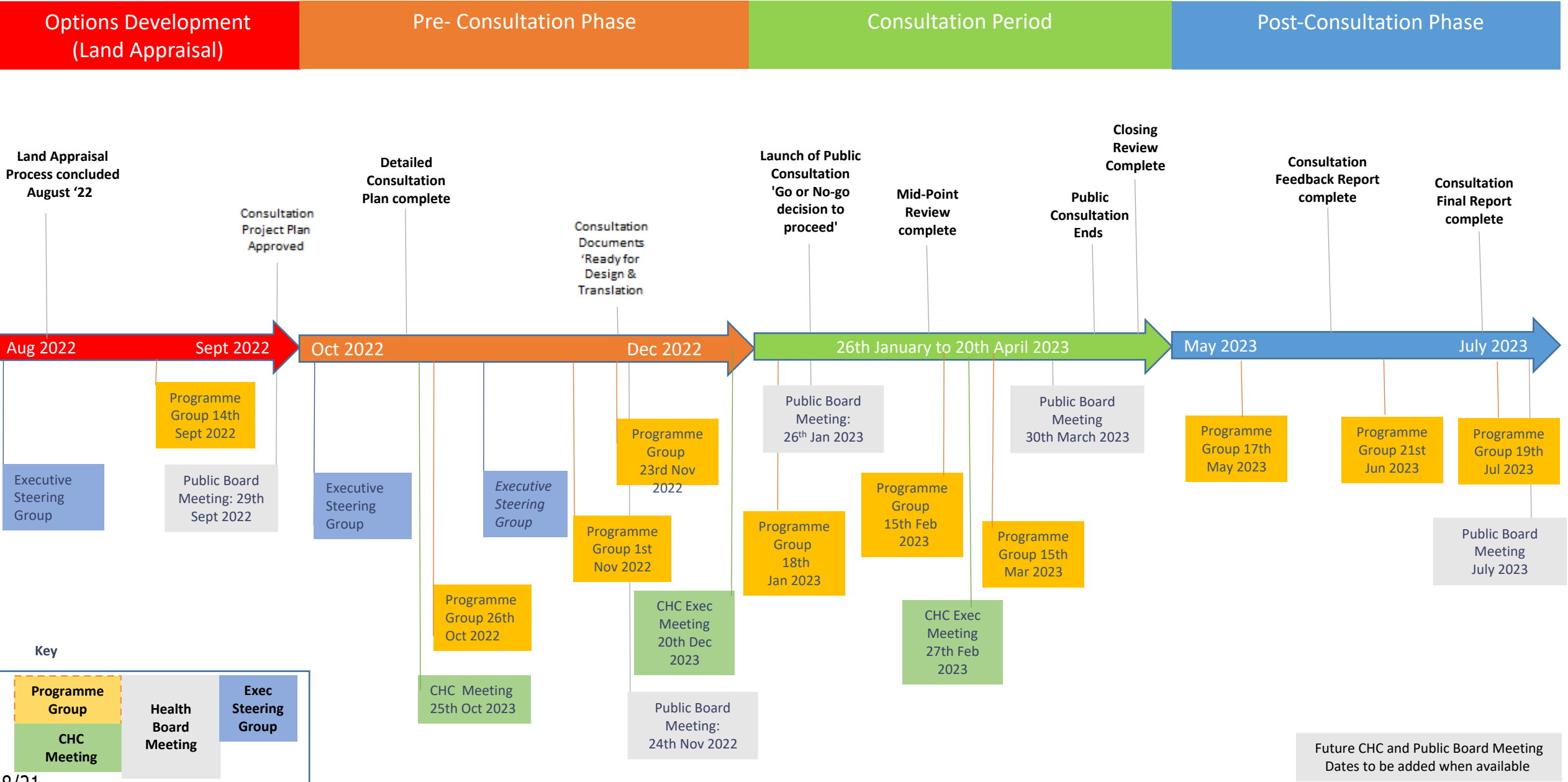


## Matters excluded from the consultation scope (continued)

- **A network of community hubs supported by an enhanced community service model:**

We are not at the stage of formal consultation on services, facilities and clinical models, so this will not be a formal part of the consultation, nor subsequent Board decision. However, we still want to listen and have early and continuous engagement with people about what is important to them. Therefore, we welcome feedback on these areas and will document this so it can be shared and considered as the health board moves forward with plans. These areas may be subjected to further consultation in the future.

# Timeline for Land Selection Consultation



## Y camau nesaf

## Next steps



## Next Steps

- Land consultation to commence in the New Year
- Review of the Clinical Model will be undertaken in early 2023
- Work will commence on the Strategic Outline Case
- Work will continue on the land acquisition and technical evaluation of the 3 shortlisted sites
- Continue to develop plans and business cases for community infrastructure

**Diolch yn fawr!**

**Thank you!**

**Sesiwn holi ac  
ateb**

**Questions & discussion**

