

3.1 Integrated Hywel Dda Health Charities Performance Report

Presenter: Sarah Jennings & Huw Thomas

Item 3.1 Integrated Hywel Dda Health Charities Performance Report SBAR

Item 3.1 Integrated Hywel Dda Health Charities Performance Report



**PWYLLGOR CRONFA ELUSENNOL
CHARITABLE FUNDS COMMITTEE**

DYDDIAD Y CYFARFOD: DATE OF MEETING:	18 th June 2019
TEITL YR ADRODDIAD: TITLE OF REPORT:	Hywel Dda Health Charities Integrated Performance Report
CYFARWYDDWR ARWEINIOL: LEAD DIRECTOR:	Sarah Jennings, Director of Partnerships and Corporate Services
SWYDDOG ADRODD: REPORTING OFFICER:	Fiona Powell, Assistant Director of Finance & Nicola Llewelyn, Head of Hywel Dda Health Charities

Pwrpas yr Adroddiad (dewiswch fel yn addas) Purpose of the Report (select as appropriate)
For discussion

ADRODDIAD SCAA SBAR REPORT	
<u>Sefyllfa / Situation</u>	
<p>This paper provides the Charitable Funds Committee with an integrated picture of performance of Hywel Dda Health Charities. The report provides an update to the Committee on the charity's financial performance and position as of 30th April 2019.</p> <p>The report also provides the Committee with the charity's 2019/20 work plan, outlining the proposed activities of the charity's fundraising and finance functions to achieve the charity's strategic objectives.</p>	
<u>Cefndir / Background</u>	
<p>This report has been developed to provide assurance to the Committee on the charity's performance and is intended to bring together both financial and non-financial information. The report is intended to provide the Committee with the relevant information required to scrutinise key performance information as the charity's corporate trustee.</p>	
<u>Asesiad / Assessment</u>	
<p>The charity's performance is summarised in the main body of the report which is presented in a dashboard style format, as per the request of Committee members.</p>	
<u>Argymhelliad / Recommendation</u>	
<p>The Committee is asked to discuss and note the content of this report and receive assurance on the charity's performance.</p>	
Amcanion: (rhaid cwblhau) Objectives: (must be completed)	
Cyfeirnod Cofrestr Risg Risk Register Reference:	Not applicable for this paper.

Safon(au) Gofal ac Iechyd: Health and Care Standard(s):	Governance, Leadership and Accountability
Amcanion Strategol y BIP: UHB Strategic Objectives:	9. To improve the productivity and quality of our services using the principles of prudent health care and the opportunities to innovate and work with partners.
Amcanion Llesiant BIP: UHB Well-being Objectives: Hyperlink to HDdUHB Well-being Statement	Not applicable for this paper.
Deddf Llesiant Cenedlaethau'r Dyfodol (Cymru) 2015 - Pum dull o weithio: The Well-being of Future Generations (Wales) Act 2015 - 5 Ways of Working:	Please explain how each of the '5 Ways of Working' will be demonstrated
	Long term - the importance of balancing short-term needs with the need to safeguard the ability to also meet long-term needs.
	Not applicable for this paper.
	Prevention – the importance of preventing problems occurring or getting worse.
	Not applicable for this paper.
	Integration - the need to identify how the Health Board's well-being objectives may impact upon each of the well-being goals, on its other objectives, or on the objectives of other public bodies.
	Not applicable for this paper.
	Collaboration – acting in collaboration with anyone else (or different parts of the organisation itself) which could help the Health Board to meet its well-being objectives.
	Not applicable for this paper.
	Involvement - the importance of involving people with an interest in achieving the well-being goals, and ensuring that those people reflect the diversity of the area which the Health Board serves
	Not applicable for this paper.

Gwybodaeth Ychwanegol: Further Information:	
Ar sail tystiolaeth:	Ledger reports and investment reports

Evidence Base:	
Rhestr Termau: Glossary of Terms:	Included within the body of the report
Partion / Pwyllgorau â ymgynhorwyd ymlaen llaw y Pwyllgor Cronfa Elusennol: Parties / Committees consulted prior to Charitable Funds Committee:	Director of Finance Director of Partnerships and Corporate Services Investment advisors Fundraising team

Effaith: (rhaid cwblhau) Impact: (must be completed)	
Ariannol / Gwerth am Arian: Financial / Service:	The report sets out the financial position of the charity. Income generated from fundraising activities is a key source of income for Hywel Dda Health Charities. The charity is therefore duty bound to ensure that the correct controls and governance arrangements exist with regards to all aspects of fundraising.
Ansawdd / Gofal Claf: Quality / Patient Care:	Charity objects are in support of NHS services locally.
Gweithlu: Workforce:	The charity has no employees but may access staff time via the University Health Board.
Risg: Risk:	Reputational risk if associated with unethical fundraising.
Cyfreithiol: Legal:	The charity's financial reporting is in line with charity law and guidance.
Reputational:	Reputational risk if associated with unethical fundraising.
Privacy	No impact
Cydraddoldeb: Equality:	No EqIA is considered necessary for a paper of this type.



Elusennau Iechyd Hywel Dda
Hywel Dda Health Charities
Rhif Elusen Gofrestredig: 1147863
Registered Charity Number: 1147863

Hywel Dda Health Charities

Integrated

Performance Report

Position as at
30th April 2019

1. Summary

Purpose	Key Messages
<ul style="list-style-type: none"> The purpose of this report is to provide an integrated picture of the performance of Hywel Dda Health Charities. The report details the financial performance and position for the financial year to 30th April 2019 and provides an update on progress made against the Hywel Dda Health Charities work plan (See Appendix 1). For year ending 31st March 2019, a summary statement is shown in Appendix 1. The statutory accounts are currently being audited and full pack will be presented at the September Charitable Funds Committee. 	<ul style="list-style-type: none"> The net movements in funds has increased by £15,335 in the month of April 2019. (Summary detail in Appendix 1)
	<ul style="list-style-type: none"> Donations have remained steady over the year (refer to Donation trend chart below).
	<ul style="list-style-type: none"> Directorate Fund balances and April movement is detailed in Appendix 2
	<ul style="list-style-type: none"> Material Commitments over £50,000 detailed in Appendix 3
	<ul style="list-style-type: none"> Notification of Significant Expenditure over £5,000 by Service Area detailed in Appendix 4

1.1 Summary of key financial activity

- The Charity Fund balances for the Directorates including future commitments as at 30th April 2019 are shown below:

Fund Balances As At 30th April 2019	Hywel Dda	Carms	Ceredigion	Pembs	Total	Less Commitments	Total
Corporate	112,097				112,097	(1,236)	110,861
Community		297,215	560,038	134,341	991,594	(415,547)	576,047
Mental Health & Learning Disabilities	26,520	41,970	769	74,097	143,355	(2,758)	140,597
Acute Services -					0		0
<i>Scheduled Care</i>		412,524	100,869	31,853	545,246	(36,016)	509,230
<i>Unscheduled Care</i>		879,720	1,211,420	2,586,905	4,678,045	(547,677)	4,130,369
<i>Cancer Services</i>		527,731	543,560	707,965	1,779,256	(506,905)	1,272,351
<i>Women & Children's Service</i>		309,409	51,226	41,521	402,155	(15,552)	386,603
Other		131,762	18,937	30,939	181,638	(4,449)	177,189
Total	138,617	2,600,331	2,486,818	3,607,621	8,833,386	(1,530,140)	7,303,247

1. Summary

1.2 Appendix 1 shows the Net movement in Funds for April 2019. It also includes a table showing the Net movement in Funds to the end of 31 March 2019. The Charity Accounts for 2018-19 are currently being audited and therefore the figures in the report are draft, a full report detailing 2018-19 movement will be presented at the next Charitable Funds Committee along with the Annual report and Accounts.

1.2.1 For **April 2019** the key movement as follows:

The **Net Movements** of the charity has increased by £15,335 in the month of April 2019.

The **Incoming Resources** in April is £37,125 including grants received of £3,000.

Donations and Fundraising Income is £34,125. This represents a decrease of 30% in comparison to previous year income of £49,305 in April 2018. (See also Fundraising and Donation Trend – point 2.1).

1.2.2 For the **year ending 31st March 2019** the key movement as follows:

The **Net Movements** of the charity increased by £560,944

The **Incoming Resources** to the year ended 31st March 2019 was £1,880,335 of which £1,114,375 related to grants, legacy and investment income.

Donations and Fundraising Income was £765,960. This represents a decrease of 1.9% in comparison to previous year income of £780,448.

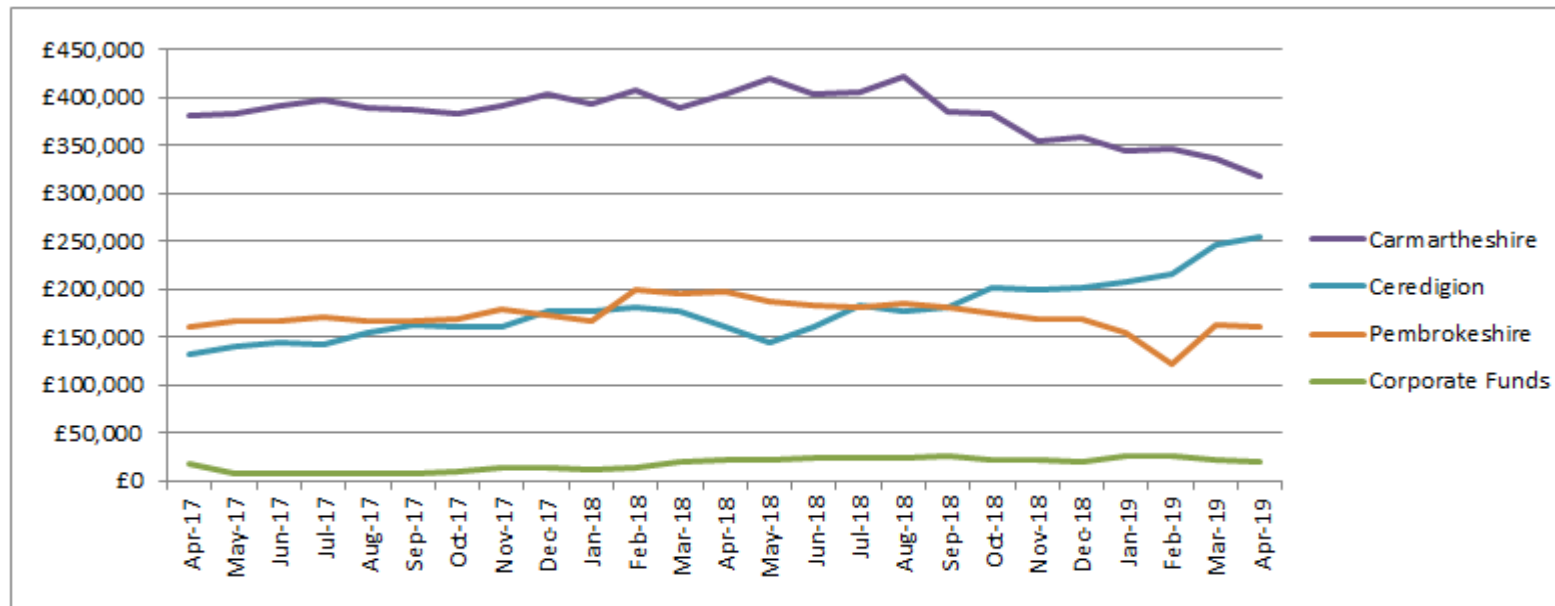
Investment management fees amount to £43,489 for the year.

Realised and unrealised Gains on investment assets amount to £220,872 for the year, compared to a loss of £35,539 in 2017-18.

2. Financial Activity

2.1 Donation and Fundraising Trend

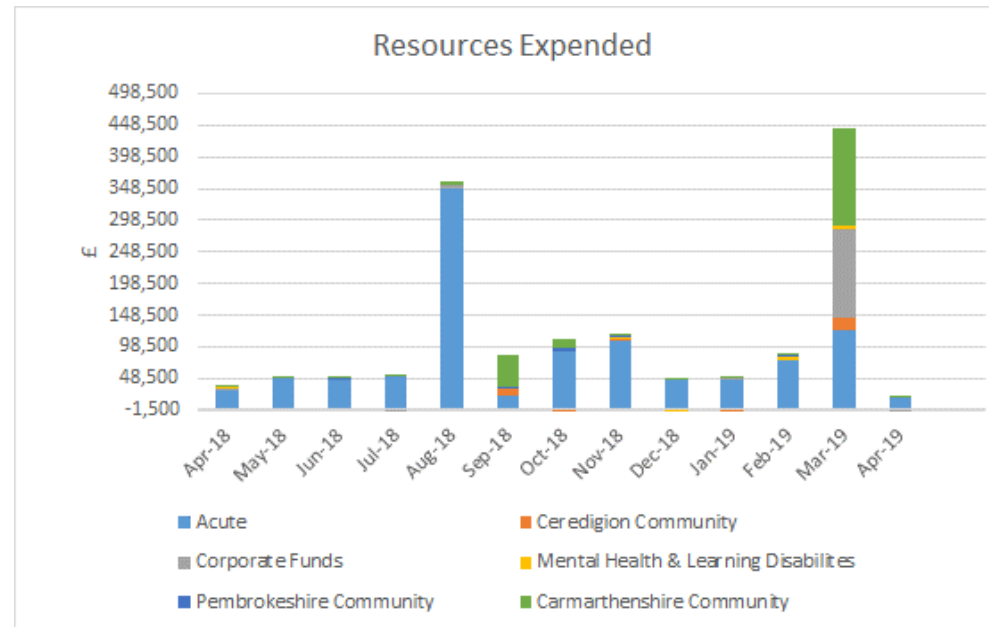
- Donations of £4,216.82 (net of charges) was received via Just Giving & My Donate for the period up to 30th April 2019. This is an increase of £1,831.99 (76.8%) compare to the same period last year.
- There were no material legacies received in April 2019.
- The graph below depicts the rolling annual donations by County, shown on monthly basis from April 2017 onwards.



2. Financial Activity

2.1.2 Resources Expended

- To note, within 2018-19 expend in resources increased in August and March 19. March increase was due to Ty Bryngwyn Phase 2 refurbishment costs and reappportionment of annual Governance & Support costs



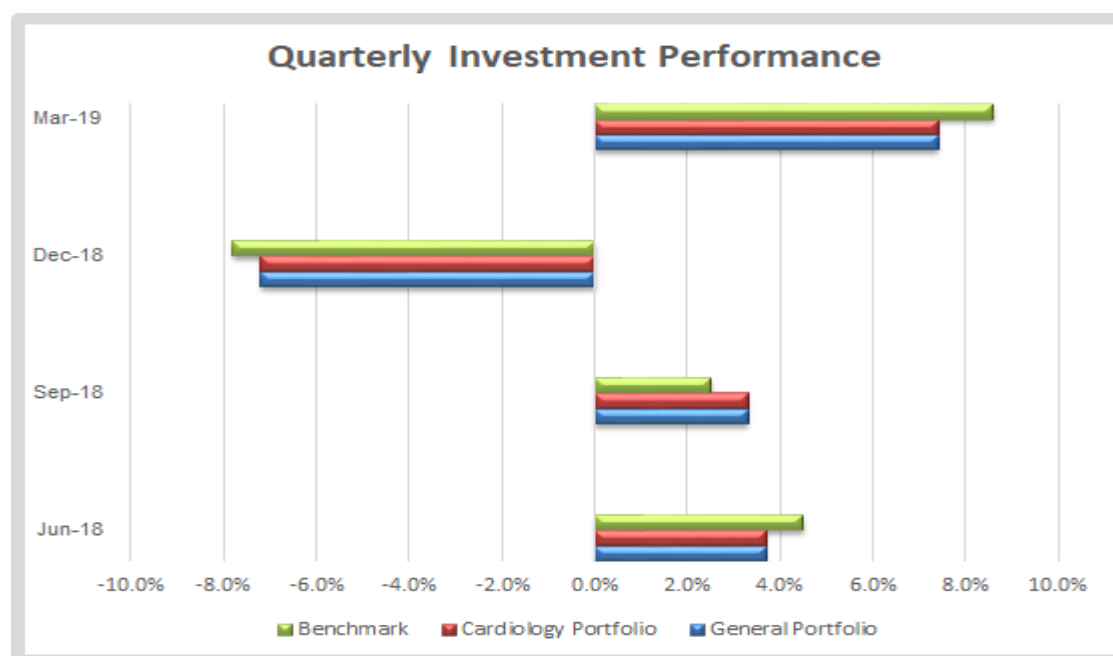
3. Investment Position

3.1 Investment performance

As at 31st March 2019 the value of those investments held, was £7,314,045 with the total funds held by the charity at the same date being £8,818,051.

Funds are separated into two funds. Firstly, a fund tied to the permanent endowment fund for Pembrokeshire Cardiology Equipment of £1,957,688, and a General charity fund of £5,356,357.

Please see below a chart reporting quarterly performance against the benchmark.



Portfolio benchmark (from 1-Feb-18): FTSE All-Share 5% capped (Total Return) (UK) (20%), ICE BofAML Sterling Corporate (8.5%), ICE BofAML UK Gilts All Stocks (9%), MSCI AC World ex UK (Local Currency) (GBP) (25%), MSCI AC World ex UK (Net Total Return) (25%), MSCI All Balanced Property Funds - One Quarter Lagged (4%), S&P Developed Property Net TR (3.5%), UK cash LIBOR 1 Month (Total Return) (5%). Performance is calculated 'net' of Sarasin's investment management fees and custody costs that have been directly debited from your portfolio, using Bid prices. This takes into account receipts to and withdrawals from the portfolio during the period, and their dates. Prices are sourced from Bloomberg. The report 'looks-through' to the underlying investments within the Sarasin funds in order to show the portfolio's overall allocation. **Where a portfolio holds Sarasin Unit Trusts or OEIC Funds, we use a close of business unit price to enable more accurate performance comparison with the portfolio benchmark.**

4. Working Balances

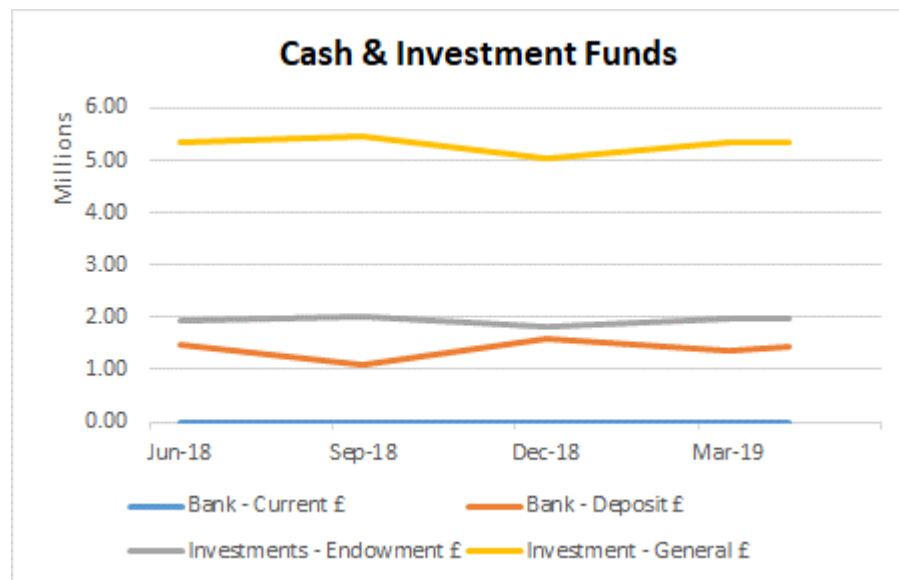
The need for access to funds is monitored on an ongoing basis, this informs discussions with our Investment Advisor.

Please see below a quarterly summary of funds held by the charity. The Charity Bank Accounts (as at 31st April 2019):

Current Account: £100

Deposit Account: £1,435,994.24

The balance of cash held is driven by the level of commitments.



5. Governance & Support Costs

In March 2019, the Committee was asked to consider the merits for continued investment in the fundraising function to ensure its objectives continue to be met. 2019-20 budget of £305,160 was approved; the reported position as at 30th April is summarised below:

	Approved Annual Budget £	Budget to 31/04/19 £	Actual Costs to 31/04/19 £	(Under) / Over Budget £
Finance	88,372	7,364	7,364	0
Fundraising	216,788	18,066	16,396	(1,670)
Total	305,160	25,430	23,760	(1,670)

6. Financial Projections, Opportunities & Risks

6.1 Risks & risk management strategy

There are no new or emerging risks at present.

Appendix 1: Charitable Fund Report Summary

CHARITABLE FUND REPORT SUMMARY FOR THE PERIOD ENDING 30th April 2019							
	Corporate	Acute Services	Carmarthen Community	Ceredigion Community	Pembrokeshire Community	Mental Health & Learning Disabilities	Total
	£	£	£	£	£	£	£
Incoming resources							
Donations	410	28,936	3,333	0	1,246	200	34,125
Legacies	0	0	0	0	0	0	0
Grants receivable	0	0	0	0	0	3,000	3,000
Investment income	0	0	0	0	0	0	0
Activities for generating funds	0	0	0	0	0	0	0
Other incoming resources	0	0	0	0	0	0	0
	410	28,936	3,333	0	1,246	3,200	37,125
Resources expended							
Costs of generating funds	0	0	0	0	0	0	0
Charitable activities	18	(17,154)	(4,550)	0	0	(104)	(21,790)
Governance costs	0	0	0	0	0	0	0
Support costs	0	0	0	0	0	0	0
Investment Management	0	0	0	0	0	0	0
	18	(17,154)	(4,550)	0	0	(104)	(21,790)
Net incoming/(outgoing) resources before transfers	428	11,782	(1,217)	0	1,246	3,096	15,335
Gross transfers between funds	0	0	0	0	0	0	0
Net incoming/(outgoing) resources	428	11,782	(1,217)	0	1,246	3,096	15,335
Gains/(losses) on investment assets							
Realised and Unrealised	0	0	0	0	0	0	0
Net movement in funds	428	11,782	(1,217)	0	1,246	3,096	15,335
Opening balance at 1 April 2019	117,772	7,549,417	343,848	545,194	130,174	131,645	8,818,050
Closing balance at 30 April 2019	118,200	7,561,199	342,631	545,194	131,420	134,741	8,833,385

Appendix 1: Charitable Fund Report Summary continued

CHARITABLE FUND REPORT SUMMARY							
FOR THE PERIOD ENDING 31st March 2019							
	Corporate	Acute Services	Carmarthen Community	Ceredigion Community	Pembrokeshire Community	Mental Health & Learning Disabilities	Total
	£	£	£	£	£	£	£
Incoming resources							
Donations	21,052	602,357	59,810	20,612	46,803	15,326	765,960
Legacies	0	640,772	130,292	6,000	0	2,500	779,564
Grants receivable	6,000	9,315	0	0	0	2,563	17,878
Investment income	131,603	156,929	8,112	17,482	321	2,486	316,933
Activities for generating funds	0	0	0	0	0	0	0
Other incoming resources	0	0	0	0	0	0	0
	158,655	1,409,373	198,214	44,094	47,124	22,875	1,880,335
Resources expended							
Costs of generating funds		0	0	0	0	0	0
Charitable activities	(11,152)	(954,197)	(229,379)	(14,757)	(12,088)	(8,693)	(1,230,266)
Governance costs	(24,022)	(14,380)	(1,526)	(3,198)	(56)	(455)	(43,637)
Support costs	(122,691)	(73,443)	(7,792)	(16,334)	(288)	(2,323)	(222,871)
Investment Management	(18,102)	(21,698)	(910)	(2,385)	(55)	(339)	(43,489)
	(175,967)	(1,063,718)	(239,607)	(36,674)	(12,487)	(11,810)	(1,540,263)
Net incoming/(outgoing) resources before transfers	(17,312)	345,655	(41,393)	7,420	34,637	11,065	340,072
Gross transfers between funds	0	197	0	0	0	(197)	0
Net incoming/(outgoing) resources	(17,312)	345,852	(41,393)	7,420	34,637	10,868	340,072
Gains/(losses) on investment assets							
Realised and Unrealised	91,409	109,980	5,678	11,902	210	1,693	220,872
Net movement in funds	74,097	455,832	(35,715)	19,322	34,847	12,561	560,944
Opening balance at 1 April 2019	43,675	7,093,585	379,563	525,872	95,327	119,084	8,257,106
Closing balance at 31 March 2019	117,772	7,549,417	343,848	545,194	130,174	131,645	8,818,050

Appendix 2: Fund Balances 2019-20

Fund Balances 2019-20	Month 1 Movement £'000	Month 1 Closing Balance £'000
Planned Care - Carmarthenshire	1.9	412.5
Planned Care - Ceredigion	0	100.9
Planned Care - Pembrokeshire	5	31.9
Unscheduled - Carmarthenshire	-4.9	879.7
Unscheduled - Pembrokeshire	-2.9	2,586.9
Unscheduled - Ceredigion	2.2	1,211.5
Carmarthen Community	-1.2	297.2
Pembrokeshire Community	1.2	134.3
Ceredigion Community	0	560.0
Cancer Services - Carmarthenshire	1.5	527.7
Cancer Services - Ceredigion	7.3	543.6
Cancer Services - Pembrokeshire	0.9	708.0
Women & Children's - Carmarthenshire	1.3	309.4
Women & Children's - Ceredigion	1.0	51.2
Women & Children's - Pembrokeshire	-0.2	41.6
Mental Health & Learning Disabilities	3.1	143.4
Corporate	0.4	112.0
Other - Carmarthenshire	-0.5	131.8
Other - Ceredigion	-0.4	18.9
Other - Pembrokeshire	-0.4	30.9
Total	15.3	8,833.4

Appendix 3: Material Commitments Over £50,000

Service	Fund Name	£	Description
Cancer Service - Pembrokeshire	Pembs Cancer Services	250,000.00	Ward 10 refurbishment
Cancer Service - Pembrokeshire	PDT - WGH Ward 10 Fund	55,034.00	Refurbishment of Ward 10
Unscheduled Care - Pembrokeshire	PDT - Cardiology Equipment Income	158,762.20	GE Vivid Cardiac Ultrasound System with Toe Probe.
Unscheduled Care - Ceredigion	CMW - BA Jenkins - Bronglais	250,000.00	BGH Chemotherapy Relocation
Ceredigion Community	CMW - BA Jenkins - Aberaeron	405,531.00	Minaeron Commitment
Commitments As At 30/04/2019		1,119,327.20	

Appendix 4: Significant Expenditure Over £5,000

Service	Fund Name	£	Description
Glangwili Unscheduled Care	Carms Cardiac Fund	5,285.00	Liifepak Defibrillator / Monitor with Pacing
Pembrokeshire Unscheduled Care	WGH General Purpose Fund	5,789.81	Tabs Sensor Alarms for Falls Prevention
Expenditure Over £5,000 In April 2019		11,074.81	