



**PWYLLGOR SICRWYDD DEDDFWRIAETH IECHYD MEDDWL
MENTAL HEALTH LEGISLATION ASSURANCE COMMITTEE**

DYDDIAD Y CYFARFOD: DATE OF MEETING:	15 June 2021
TEITL YR ADRODDIAD: TITLE OF REPORT:	Mental Health & Learning Disabilities Directorate Clinical Governance Structure Diagram
CYFARWYDDWR ARWEINIOL: LEAD DIRECTOR:	Andrew Carruthers Director of Operations
SWYDDOG ADRODD: REPORTING OFFICER:	Sara Rees Assistant Director of Nursing, Mental Health & Learning Disabilities

Pwrpas yr Adroddiad (dewiswch fel yn addas) Purpose of the Report (select as appropriate)
Er Gwybodaeth/For Information

ADRODDIAD SCAA SBAR REPORT
<u>Sefyllfa / Situation</u> The diagram is provided to give an illustration of the inter-connection and relationships within the clinical governance structure of the Mental Health & Learning Disabilities Directorate.
<u>Cefndir / Background</u> The diagram was initially created for reference by the Quality & Safety Experience Group (QS&EG) to demonstrate the reporting structure and connections between each of the groups within the Directorate who report to the QS&EG and subsequently to the Operational Quality, Safety & Assurance Sub Committee and Quality Safety & Assurance Committee. QS&EG requires regular reporting from Assurance & Risk; Health & Safety; Estates/Facilities; Fire Safety; Restrictive Practice; Ombudsman; Legal & Claims and representation at each meeting, together with regular updates from the MH&LD Business Planning and Performance Assurance Group (BPPAG) and relays information received from the Mental Health Legislation Assurance Committee.
<u>Argymhelliad / Recommendation</u> <ul style="list-style-type: none">• For Information

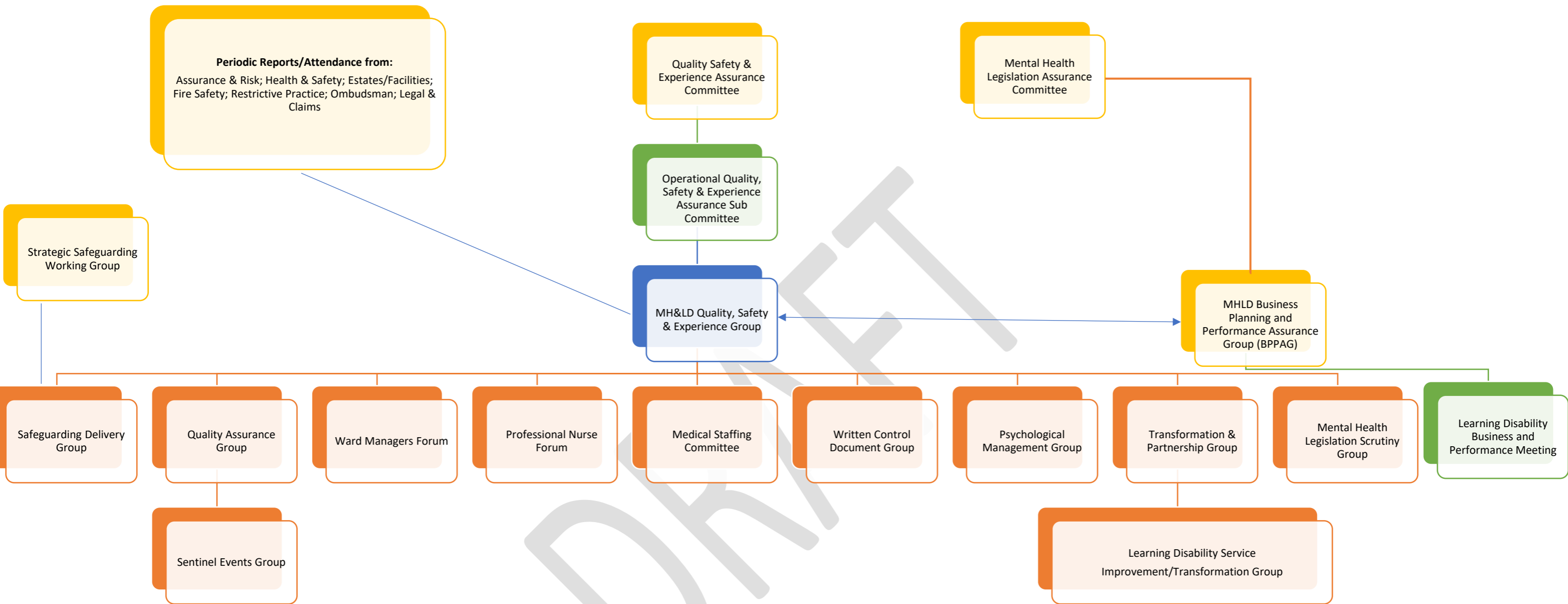
Amcanion: (rhaid cwblhau) Objectives: (must be completed)	
Cyfeirnod Cofrestr Risg Datix a Sgôr Cyfredol: Datix Risk Register Reference and Score:	
Safon(au) Gofal ac Iechyd: Health and Care Standard(s): Hyperlink to NHS Wales Health & Care Standards	Choose an item. Choose an item. Choose an item. Choose an item.
Amcanion Strategol y BIP: UHB Strategic Objectives: Hyperlink to HDdUHB Strategic Objectives	Choose an item. Choose an item. Choose an item. Choose an item.
Amcanion Llesiant BIP: UHB Well-being Objectives: Hyperlink to HDdUHB Well-being Statement	Choose an item. Choose an item. Choose an item. Choose an item.

Gwybodaeth Ychwanegol: Further Information:	
Ar sail tystiolaeth: Evidence Base:	
Rhestr Termau: Glossary of Terms:	
Partion / Pwyllgorau â ymgynhorwyd ymlaen llaw y Cyfarfod Bwrdd Iechyd Prifysgol: Parties / Committees consulted prior to University Health Board:	

Effaith: (rhaid cwblhau) Impact: (must be completed)	
Ariannol / Gwerth am Arian: Financial / Service:	e.g. financial impact or capital requirements: (if yes, please complete relevant section of the integrated impact assessment template available via the link below) http://howis.wales.nhs.uk/sitesplus/862/opendoc/453906
Ansawdd / Gofal Claf: Quality / Patient Care:	e.g. adverse quality and/or patient care outcomes/impacts: (if yes, please complete relevant section of the integrated impact assessment template available via the link below) http://howis.wales.nhs.uk/sitesplus/862/opendoc/453906

Gweithlu: Workforce:	e.g. adverse existing or future staffing impacts: (if yes, please complete relevant section of the integrated impact assessment template available via the link below) http://howis.wales.nhs.uk/sitesplus/862/opendoc/453906
Risg: Risk:	e.g. risks identified and plans to mitigate risks: (if yes, please complete relevant section of the integrated impact assessment template available via the link below) http://howis.wales.nhs.uk/sitesplus/862/opendoc/453906
Cyfreithiol: Legal:	e.g. legal impacts or likelihood of legal challenge: (if yes, please complete relevant section of the integrated impact assessment template available via the link below) http://howis.wales.nhs.uk/sitesplus/862/opendoc/453906
Enw Da: Reputational:	e.g. potential for political or media interest or public opposition: (if yes, please complete relevant section of the integrated impact assessment template available via the link below) http://howis.wales.nhs.uk/sitesplus/862/opendoc/453906
Gyfrinachedd: Privacy:	e.g. potential for data breaches: (if yes, please complete relevant section of the integrated impact assessment template available via the link below) http://howis.wales.nhs.uk/sitesplus/862/opendoc/453906
Cydraddoldeb: Equality:	e.g. potential negative/positive impacts identified in the Equality Impact Assessment (EqIA) documentation – follow link below <ul style="list-style-type: none"> • Has EqIA screening been undertaken? Yes/No (if yes, please supply copy, if no please state reason) • Has a full EqIA been undertaken? Yes/No (if yes please supply copy, if no please state reason) http://howis.wales.nhs.uk/sitesplus/862/opendoc/453906

MHLD Clinical Governance Structure



Periodic Reports/Attendance
 from the Learning Disability
 - Triumverate Action Planning Group
 - Community of Practice (Nurses' Forum)
 - Clinical Advisory Group (Practitioners' Forum)
 are received at the relevant MH&LD Quality & Safety & Experience Group sub-groups