



NHS
WALES
GIG
CYMRU

Bwrdd Iechyd Prifysgol
Caerdydd a'r Fro
Cardiff and Vale
University Health Board

Benchmarking data April 2018 – March 2019:

Health Board

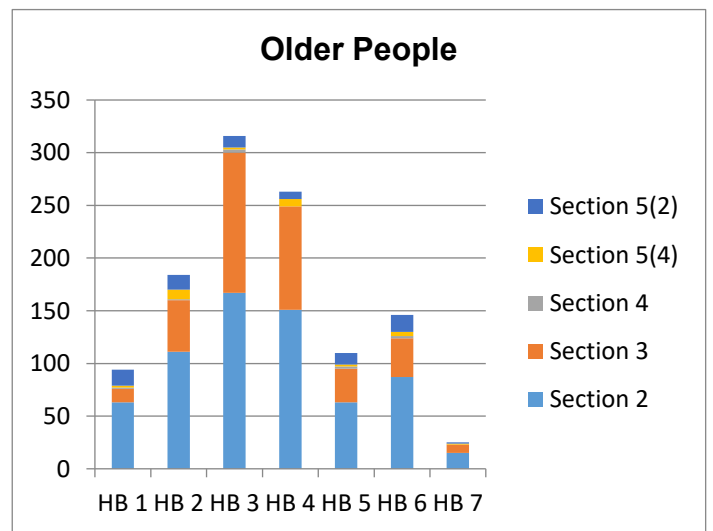
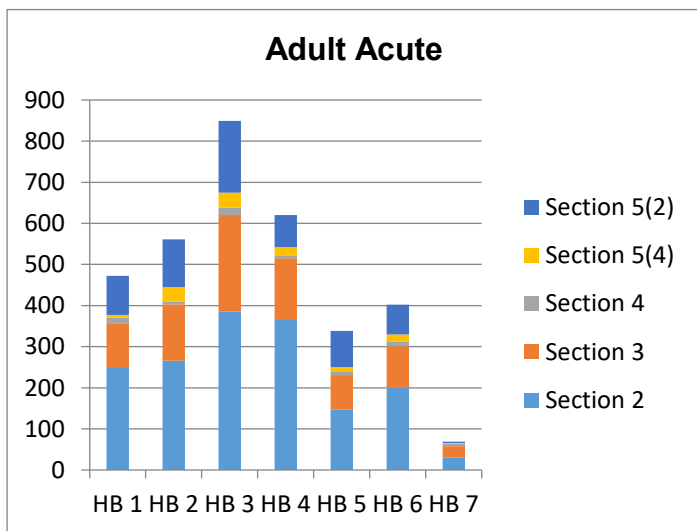
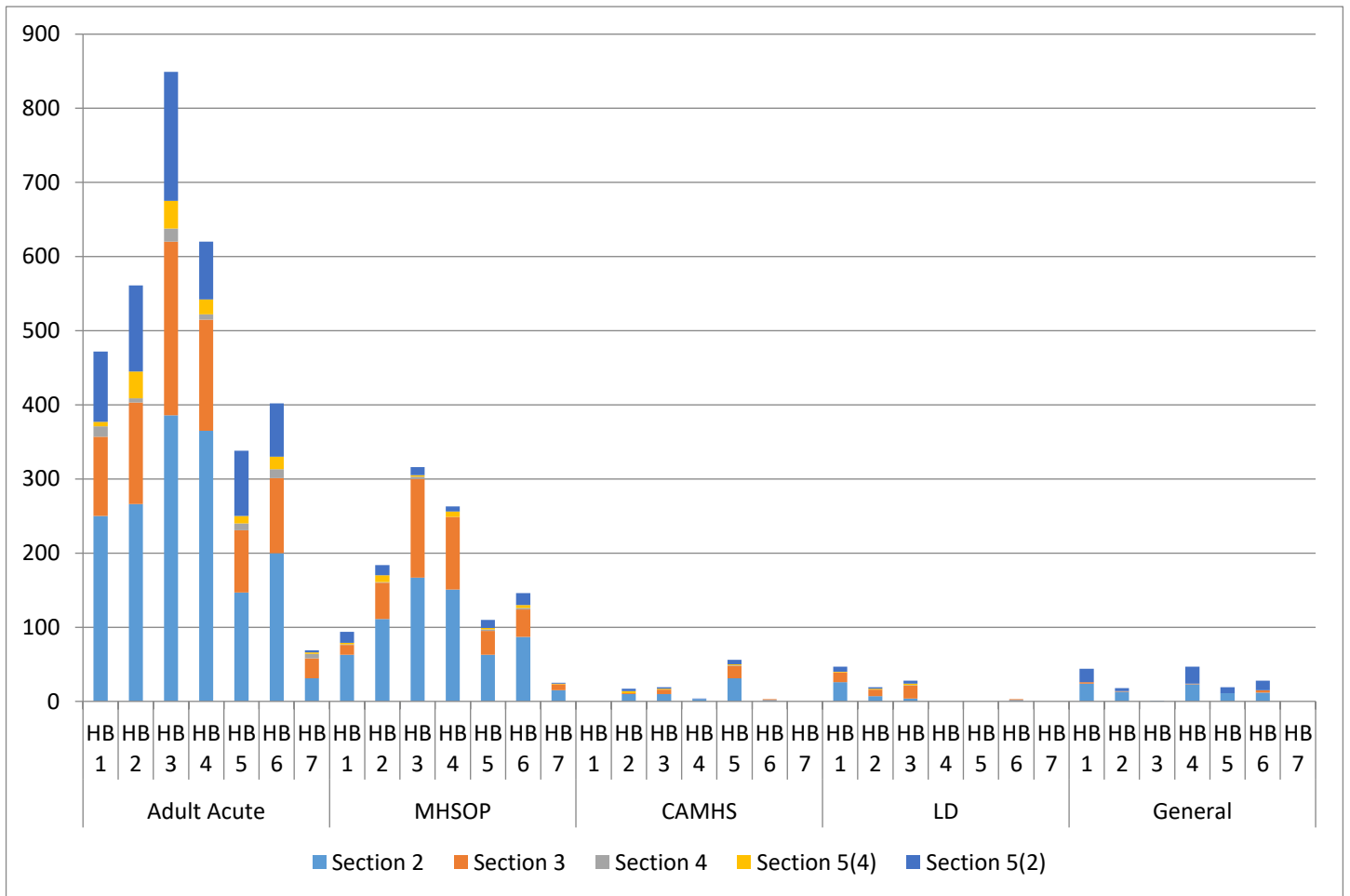
Population

Abertawe Bro Morgannwg UHB	HB 1	531,858
Aneurin Bevan UHB	HB 2	587,743
Betsi Cadwalader UHB	HB 3	696,284
Cardiff & Vale UHB	HB 4	493,446
Cwm Taf UHB	HB 5	299,080
Hywel Dda UHB	HB 6	384,239
Powys Teaching HB	HB 7	132,515

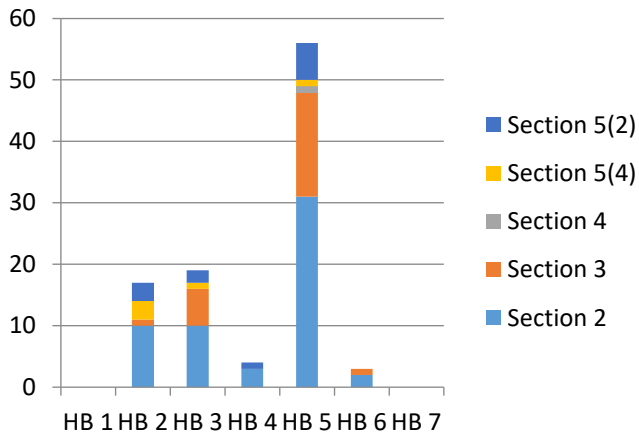
Total population of Wales:- 3,125,165

Part 2 MHA Activity

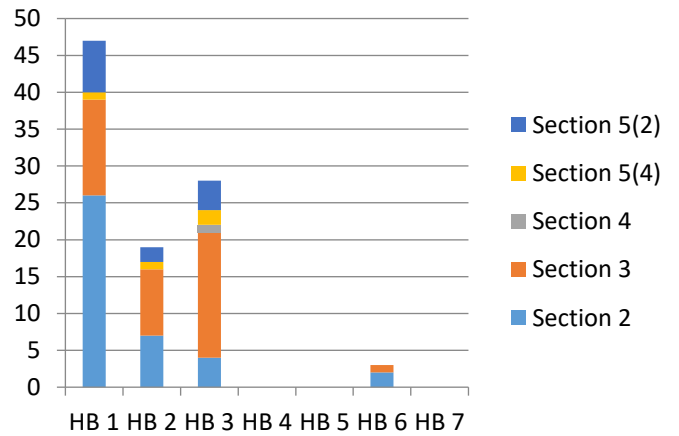
During the period a total of 4802 patients were made subject to the part 2 provisions of the MHA 1983 across Wales.



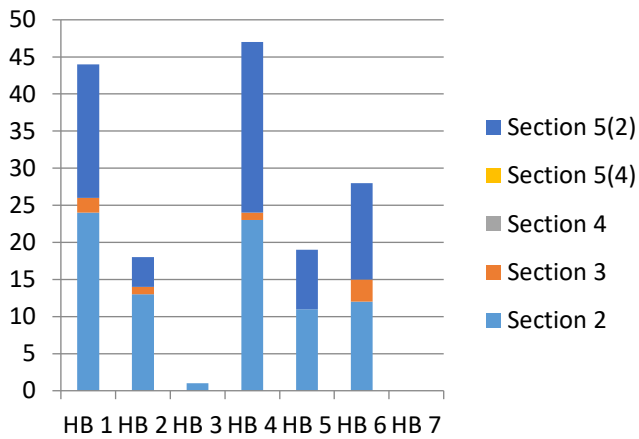
Child and Adolescent



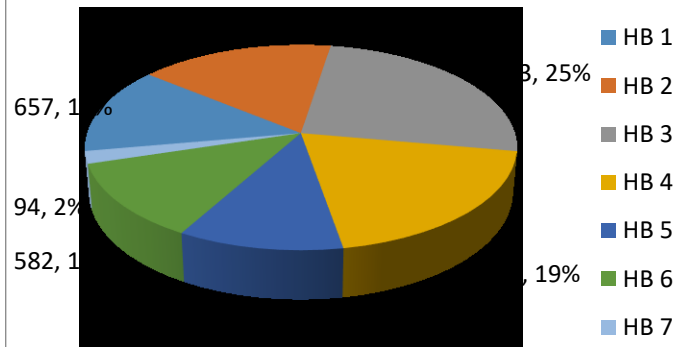
Learning Difficulties



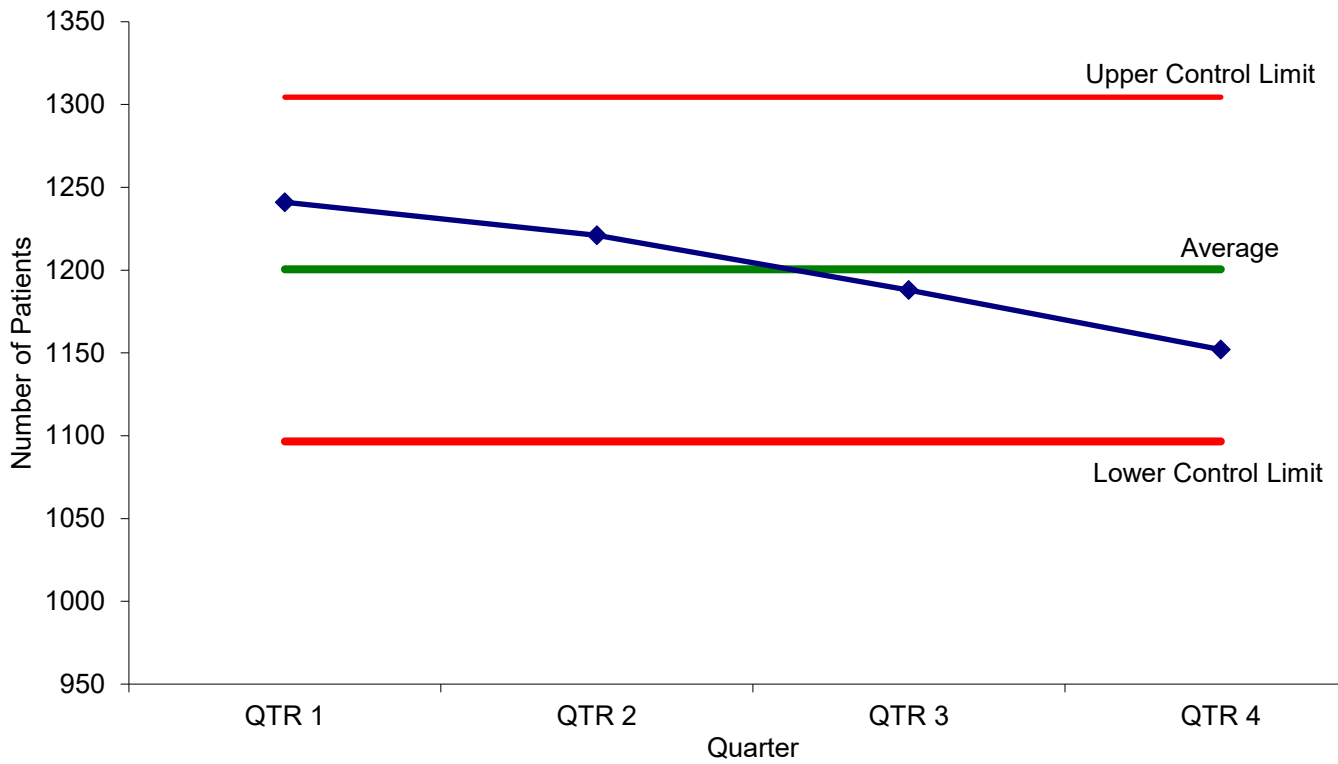
General (non-Mental Health)



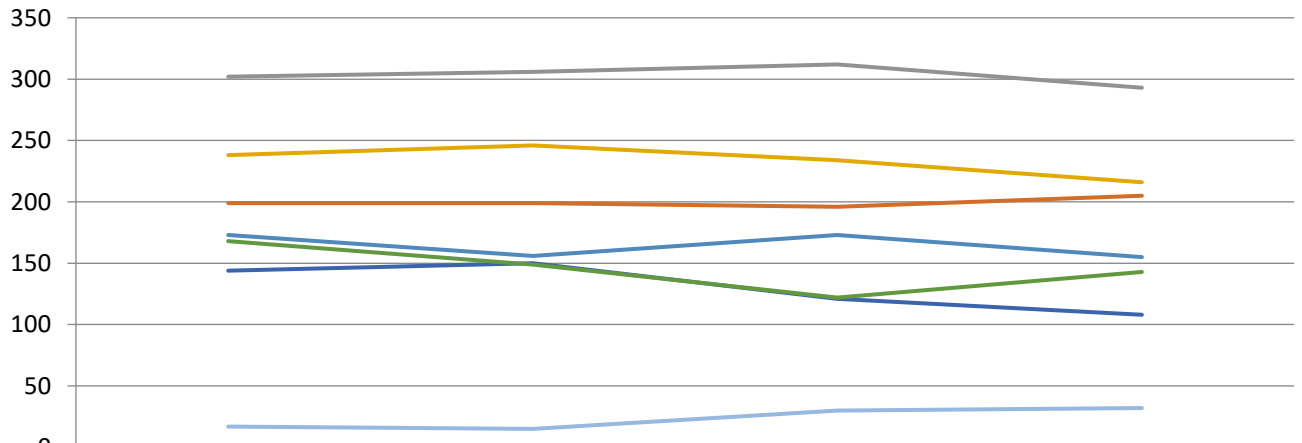
Total Section (2, 3, 4, 5(2), 5(4))



New Detentions under Part 2 over the period

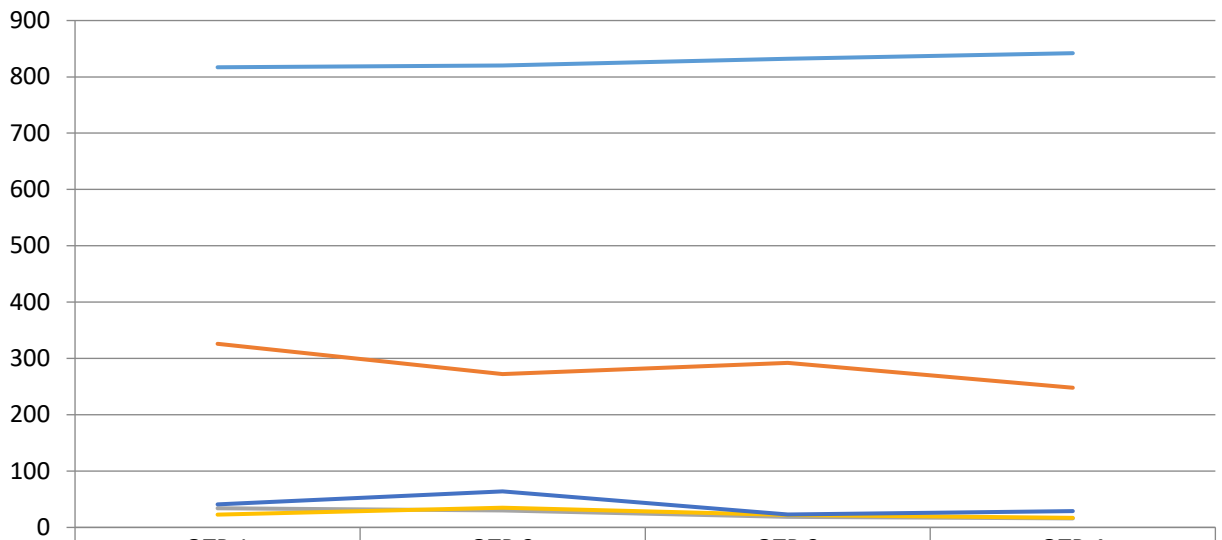


New Detentions under Part 2 per HB



	QTR 1	QTR 2	QTR 3	QTR 4
HB 1	173	156	173	155
HB 2	199	199	196	205
HB 3	302	306	312	293
HB 4	238	246	234	216
HB 5	144	150	121	108
HB 6	168	149	122	143
HB 7	17	15	30	32

New Detentions under Part 2 per speciality



	QTR 1	QTR 2	QTR 3	QTR 4
Adult Acute	817	820	832	842
MHSOP	326	272	292	248
CAMHS	34	30	19	16
LD	23	35	22	17
General	41	64	23	29

The above charts show a clear steady reduction in the use of Part 2 as a whole. Looking at the detail shows that within the specialities a general decline, with the exception of Adult Acute which rose steadily. The largest change over the year was within MHSOP, which showed a difference of 78 applications between the first and final quarter.

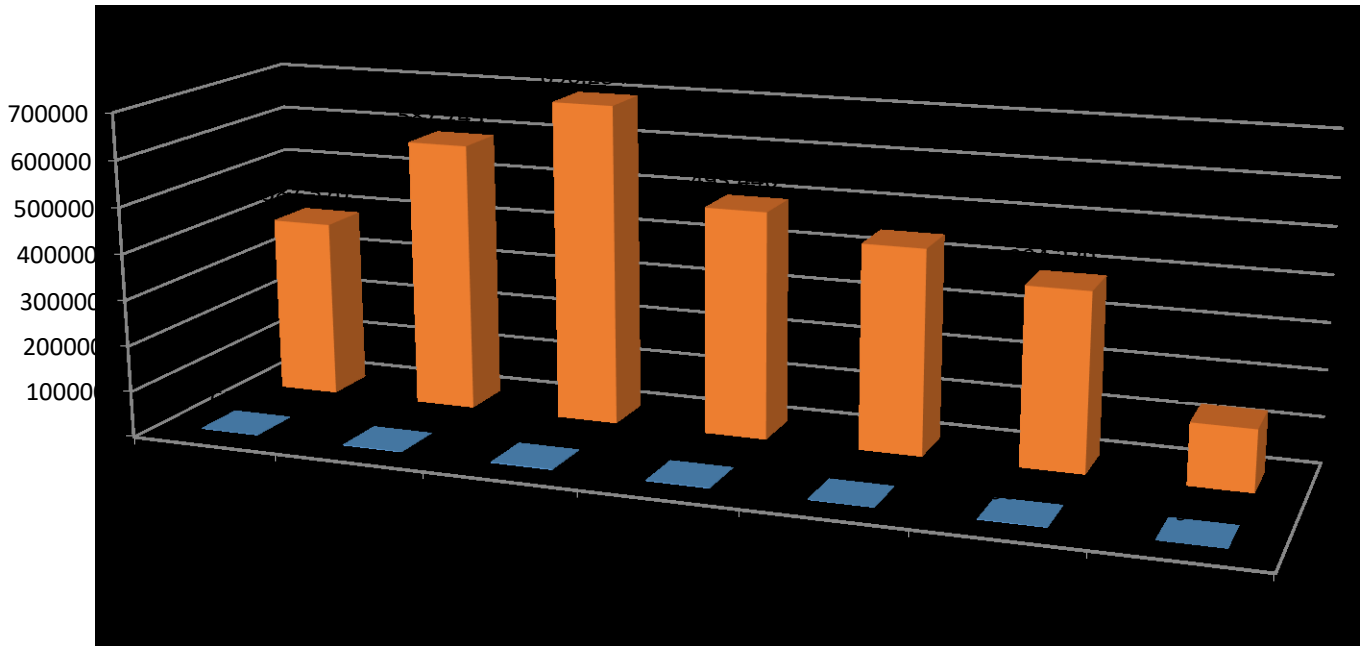
It is difficult to see on the chart but the most significant change was within CAMHS, where the difference between the first and last quarter showed a greater than 50% drop in numbers.

Part 2 MHA Activity Compared to Health Board Population

Population figures taken from <https://statswales.gov.wales>

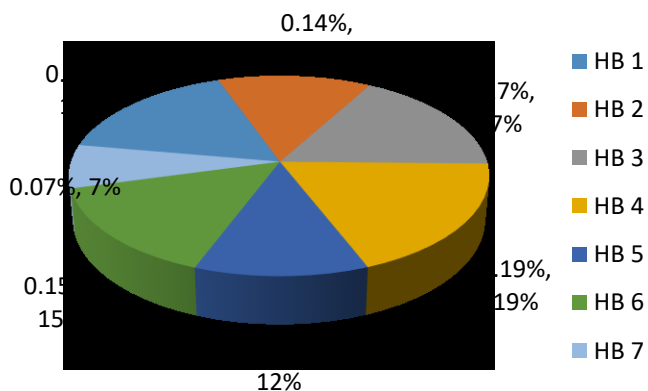
The latest available population by Health Board figures available at the time of writing were mid-2017.

Inpatient Formal Sections (2, 3, 4, 5(2), 5(4)) Compared to Health Board Population

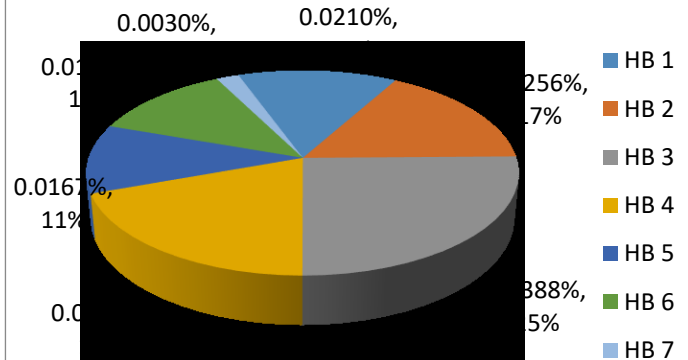


	HB 1	HB 2	HB 3	HB 4	HB 5	HB 6	HB 7
On Section	657	799	1213	934	523	582	94
Population	387,570	587,743	696,284	493,446	443,368	384,239	132,515

Inpatient Formal Sections (2, 3, 4, 5(2), 5(4)) Compared to Health Board Population

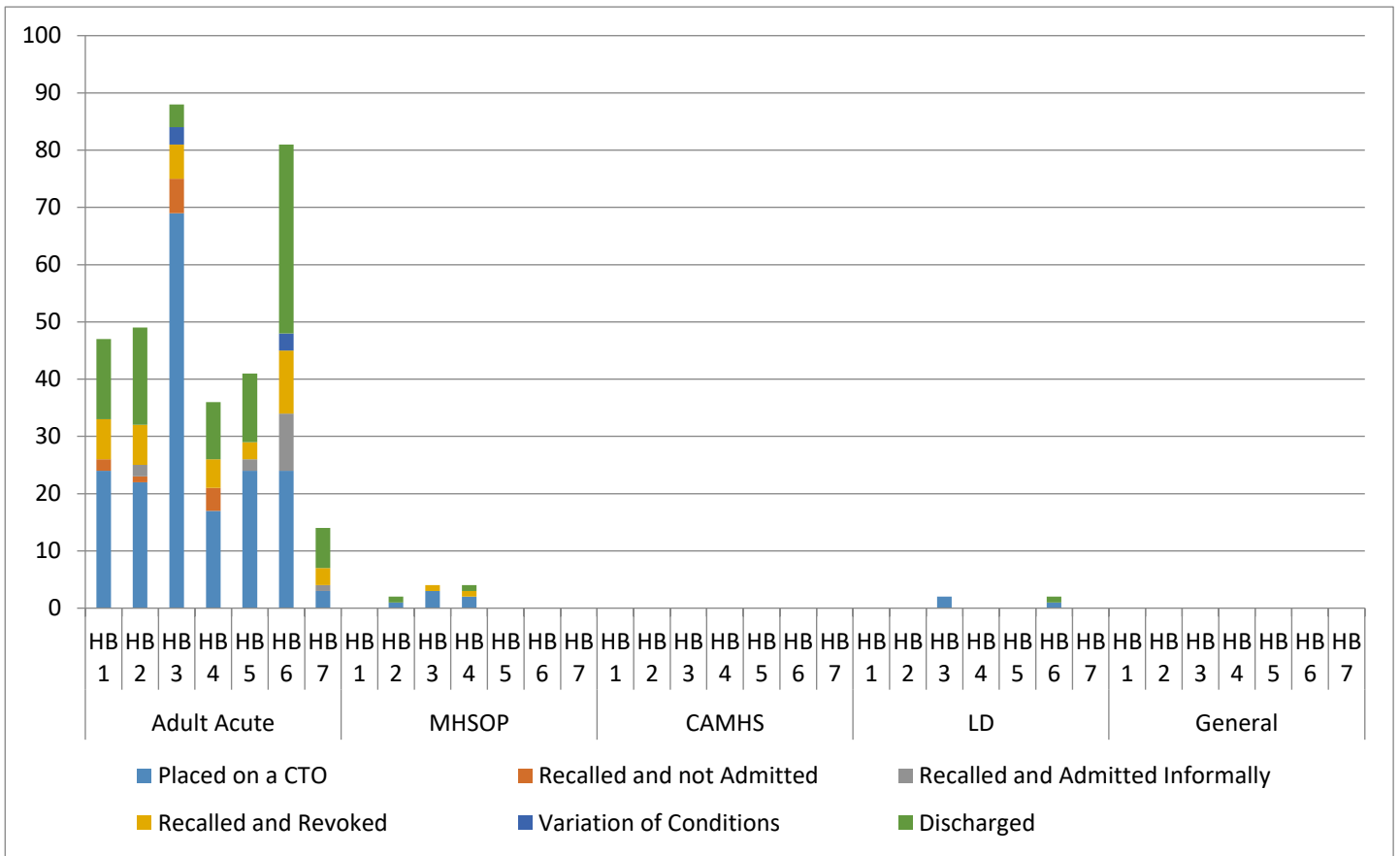


Inpatient Formal Sections (2, 3, 4, 5(2), 5(4)) Compared to the Population of Wales

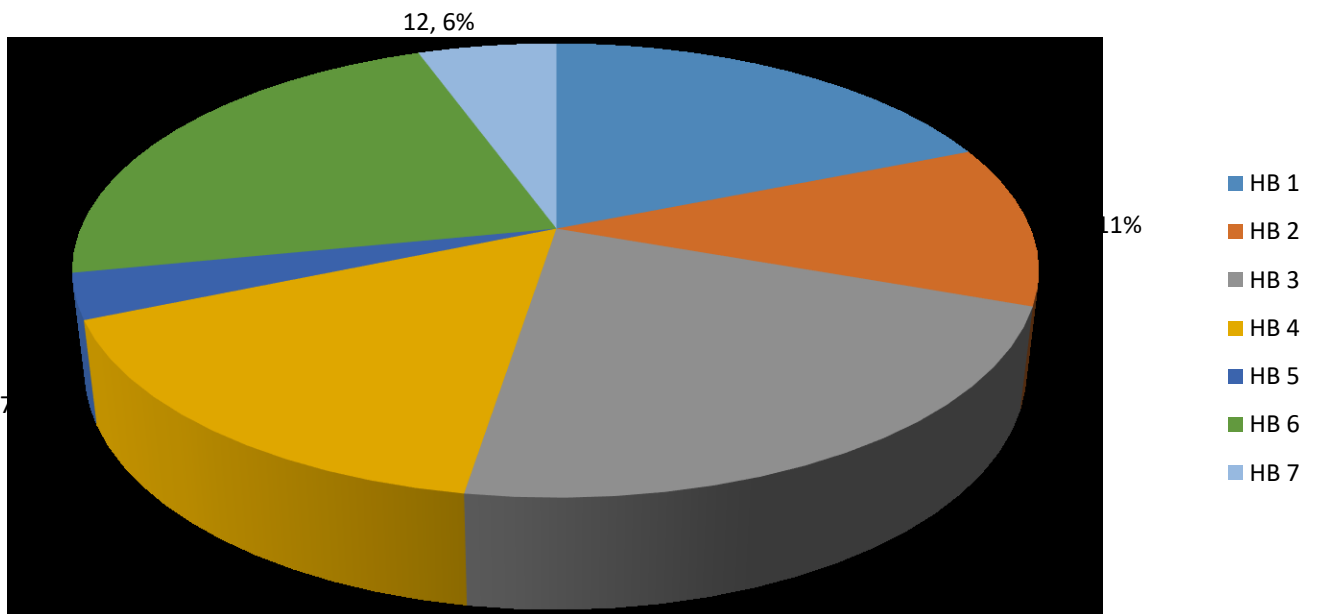


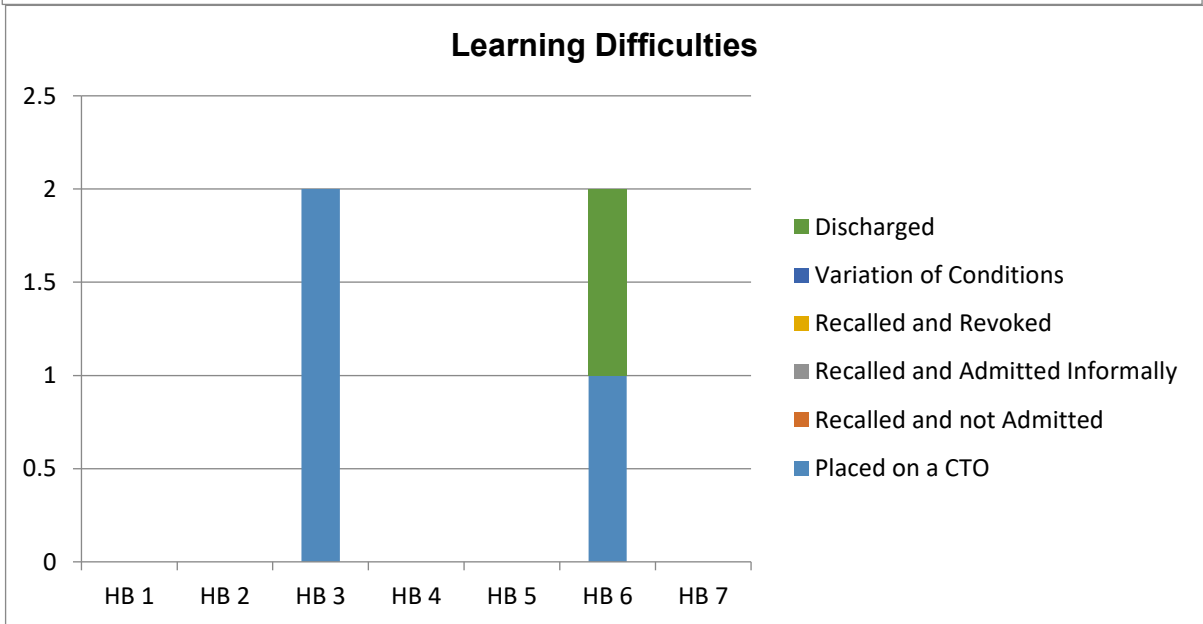
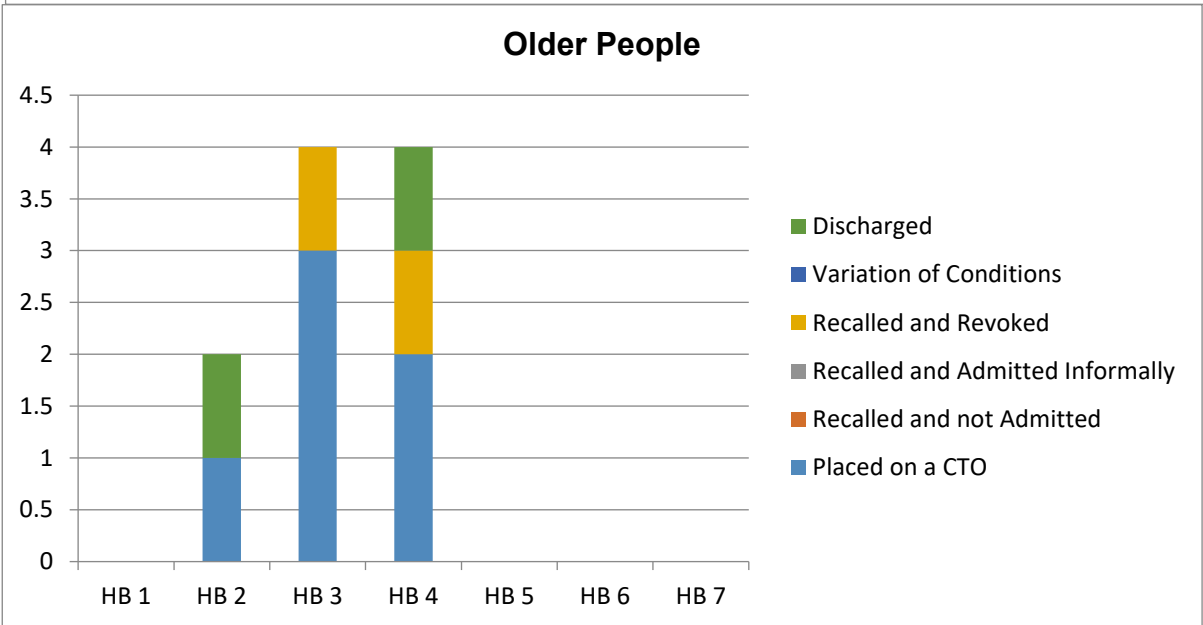
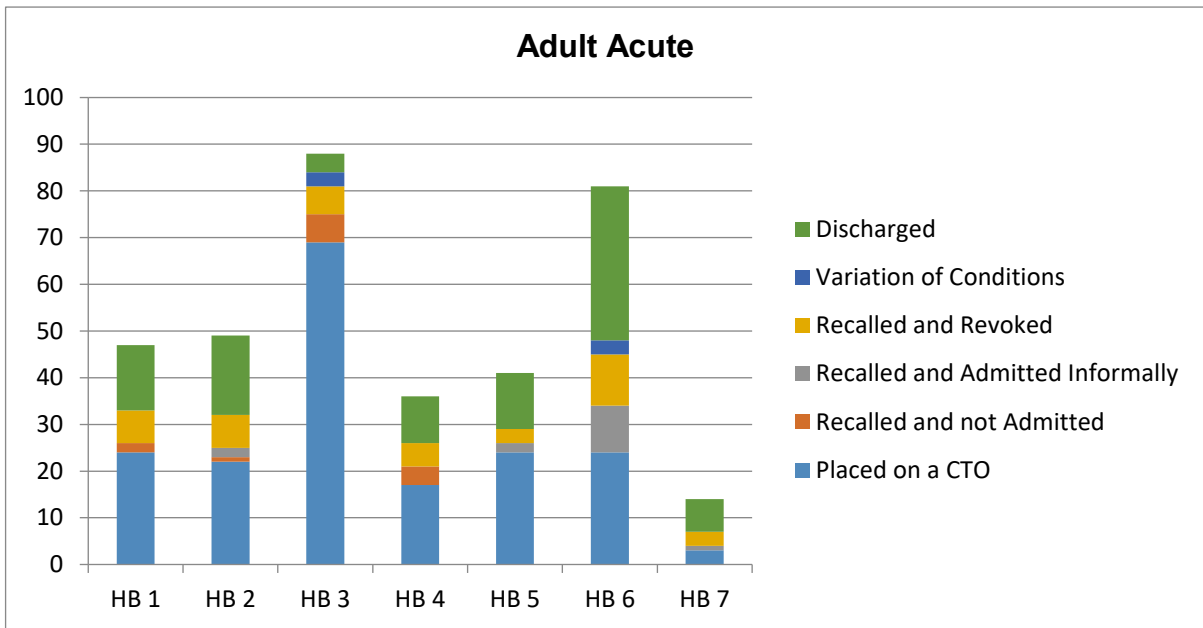
Community Treatment Order

During the period a total of 192 patients were made subject to a Community Treatment Order across Wales.

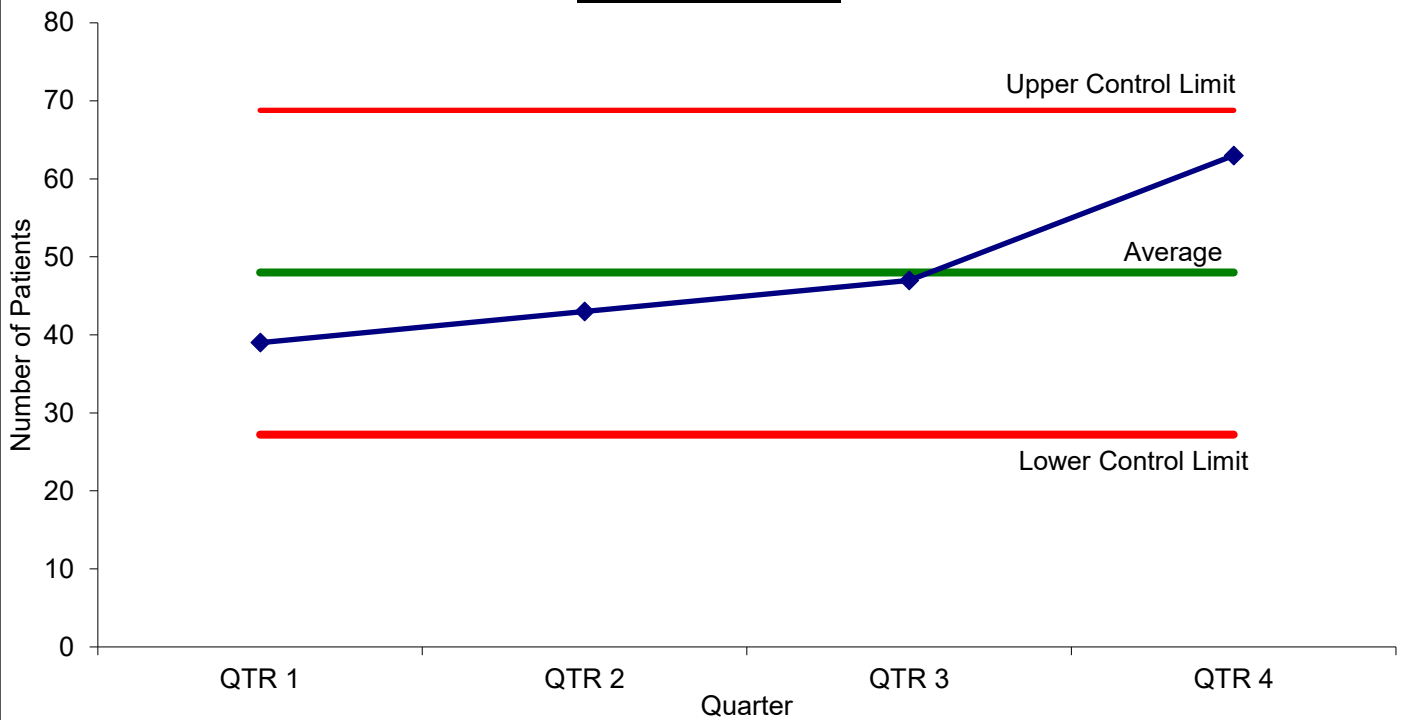


Patients Subject to Community Treatment Order on 31/03/2019

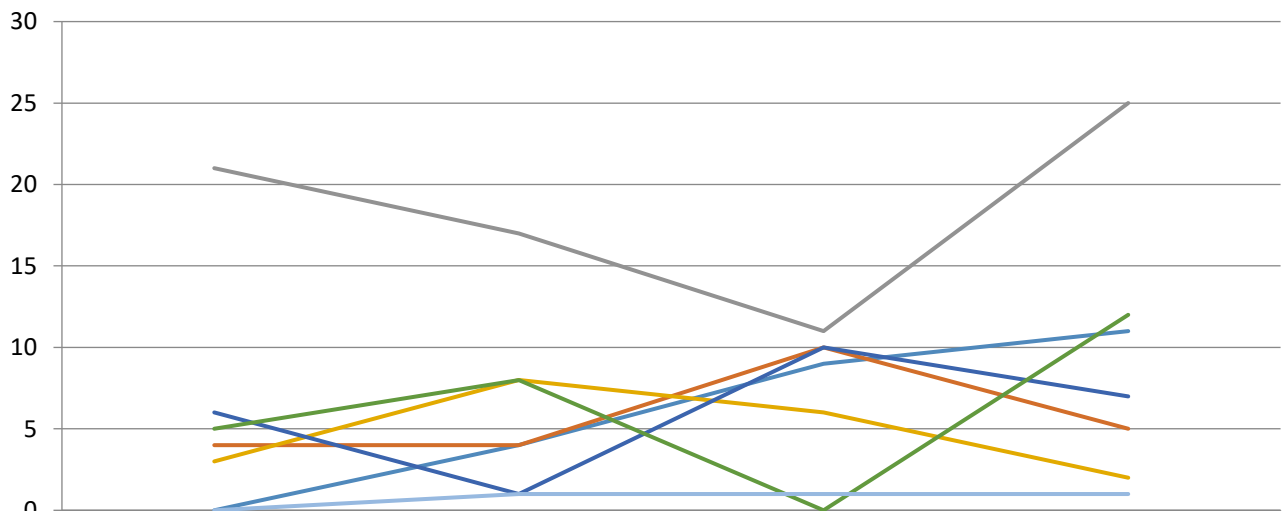




Patients made subject to a Community Treatment Order across Wales during the period

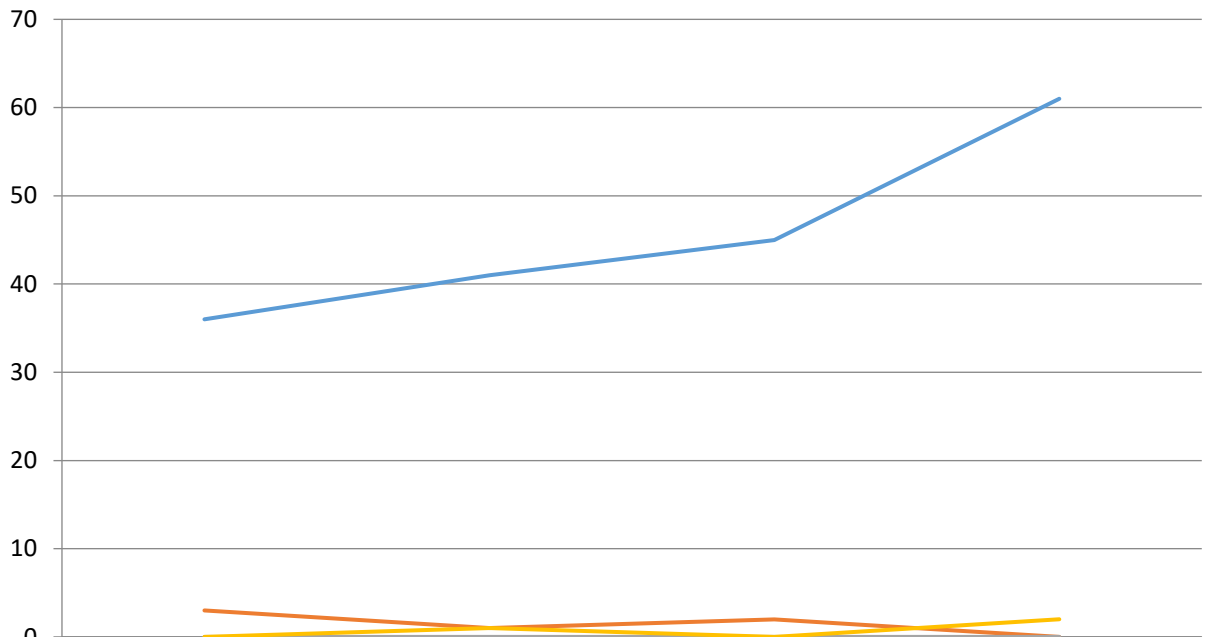


Patients made subject to a Community Treatment Order across Wales per HB



	QTR 1	QTR 2	QTR 3	QTR 4
HB 1	0	4	9	11
HB 2	4	4	10	5
HB 3	21	17	11	25
HB 4	3	8	6	2
HB 5	6	1	10	7
HB 6	5	8	0	12
HB 7	0	1	1	1

**Patients made subject to a Community Treatment Order accross Wales
per speciality**

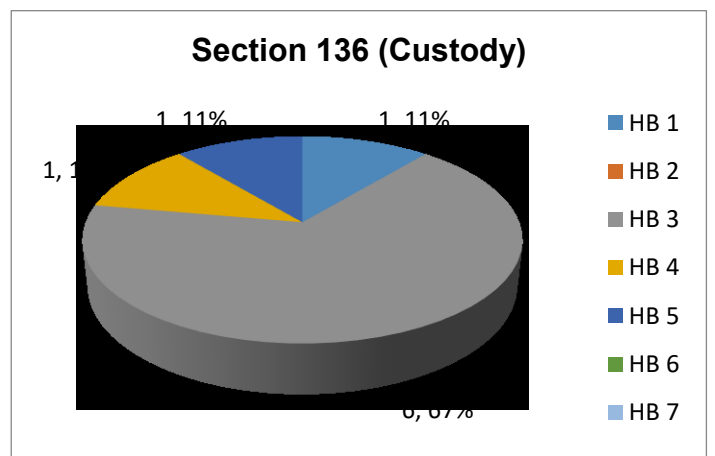
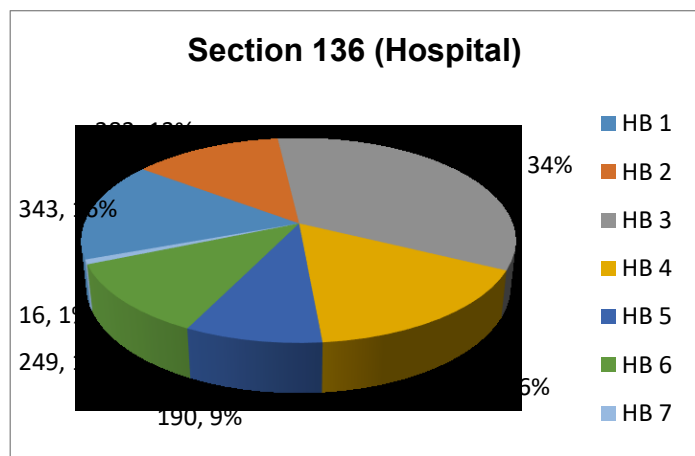
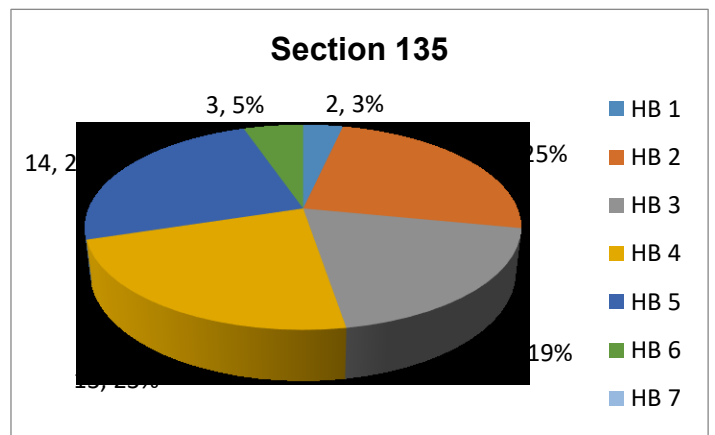
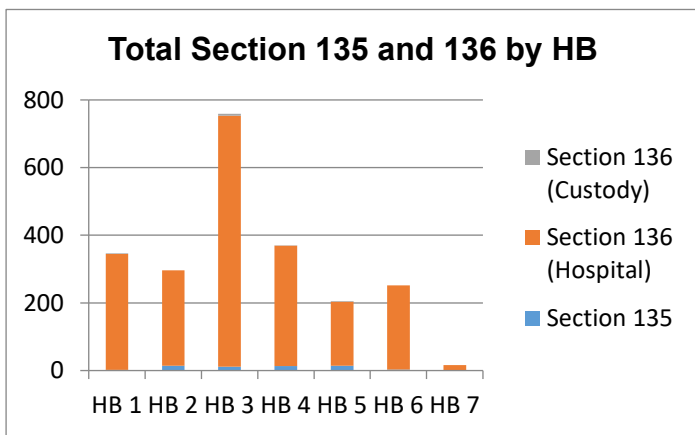
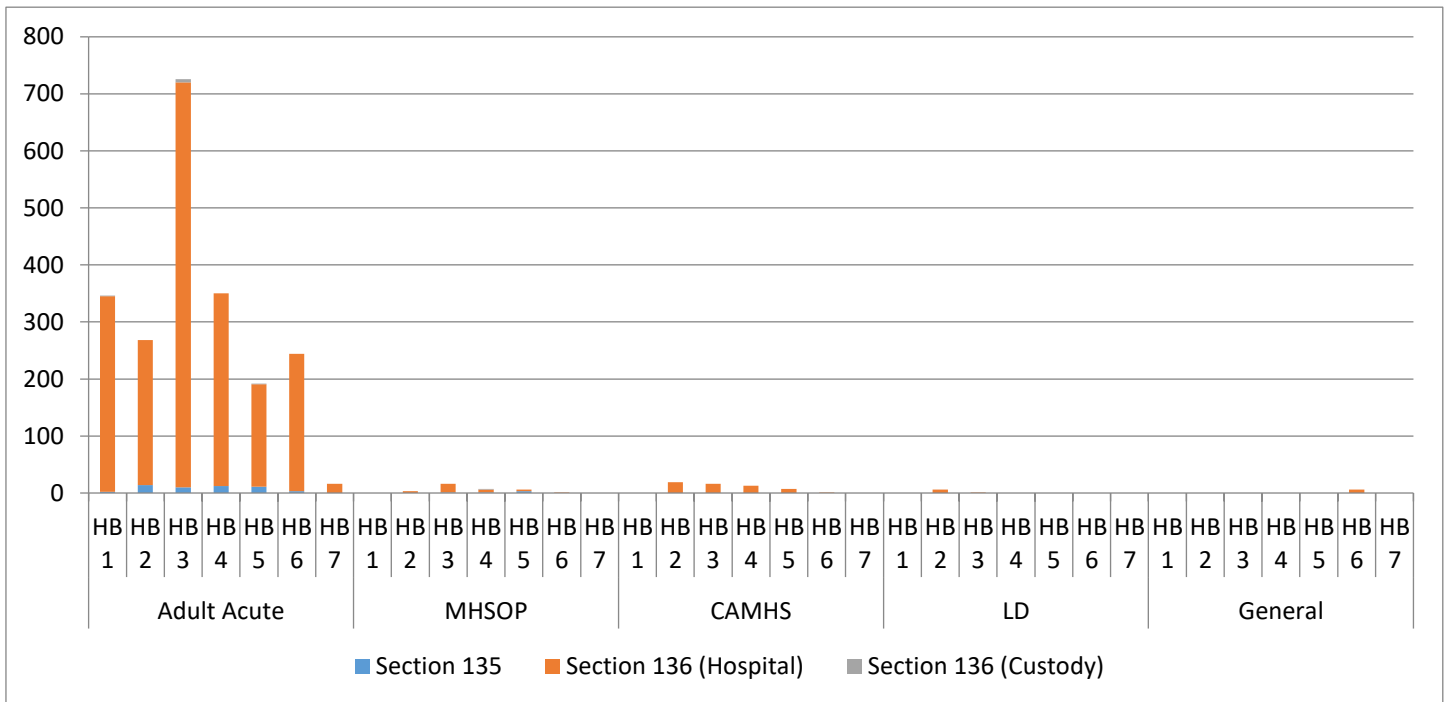


	QTR 1	QTR 2	QTR 3	QTR 4
Adult Acute	36	41	45	61
MHSOP	3	1	2	0
CAMHS	0	0	0	0
LD	0	1	0	2

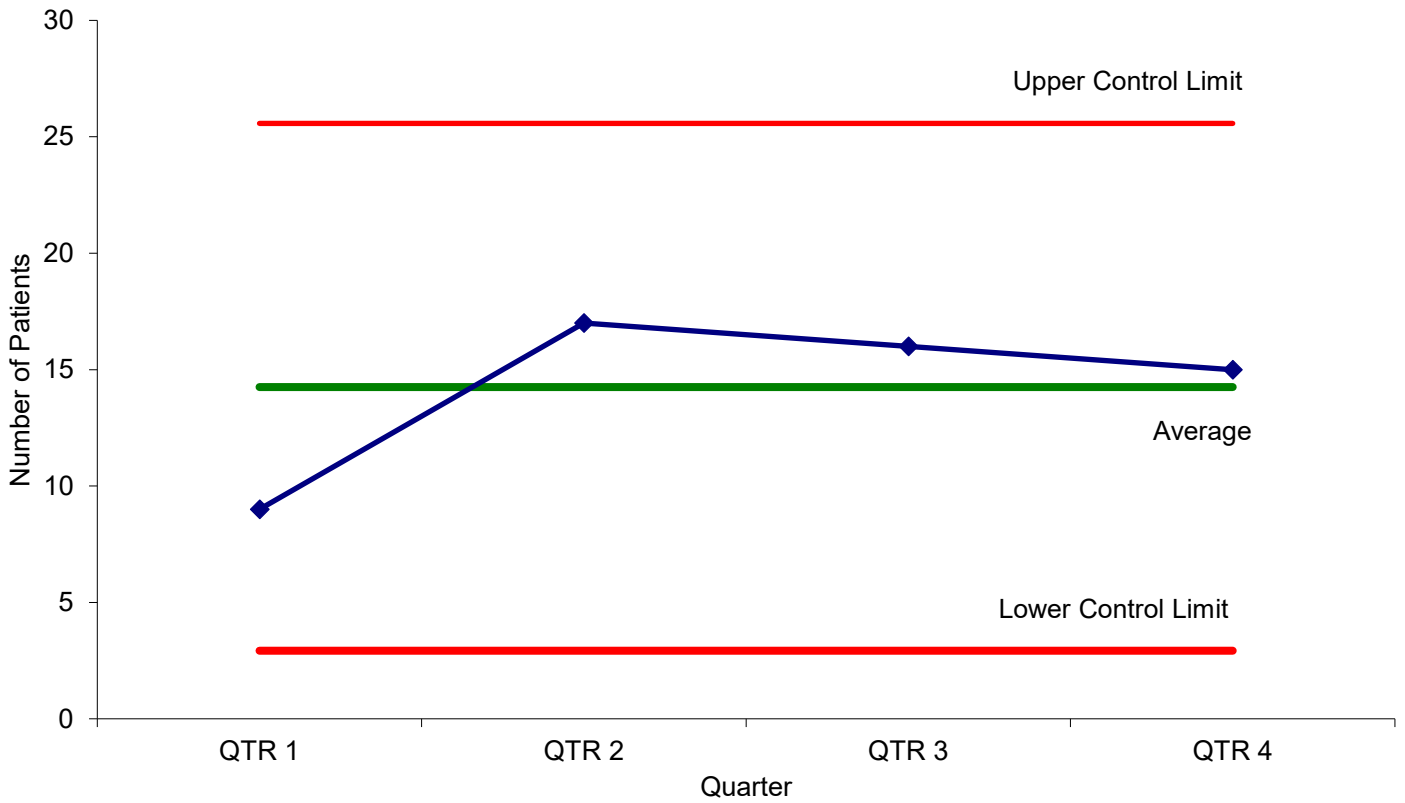
The above charts show a clear steady increase of the use of Community Treatment Order over the period. However, this is not reflected across all specialties or Health Boards. Its use within both Learning Difficulties and Mental health Services for Older People is very minimal, whilst being non-existent in the Child and Adolescent Mental Health Services. There has been a steady rise in its use within Adult Acute, which has spiked significantly in Quarter 4.

Section 135 & 136

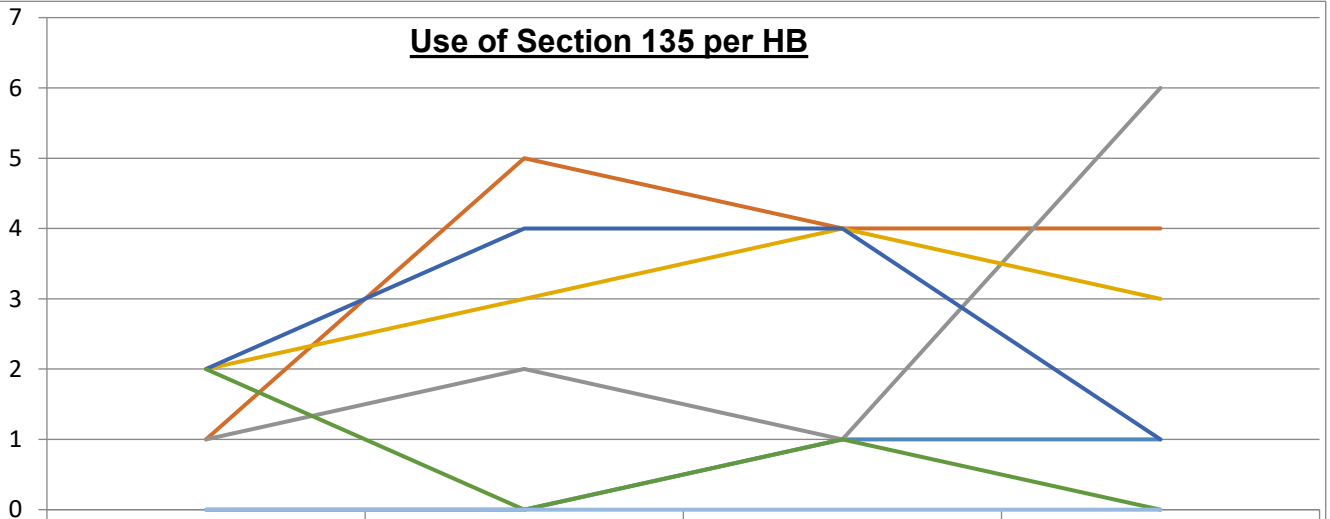
The charts below provide data on how section 135/136 is used across Wales broken down into specialities, HB's and total activity.



Use of Section 135 during the period

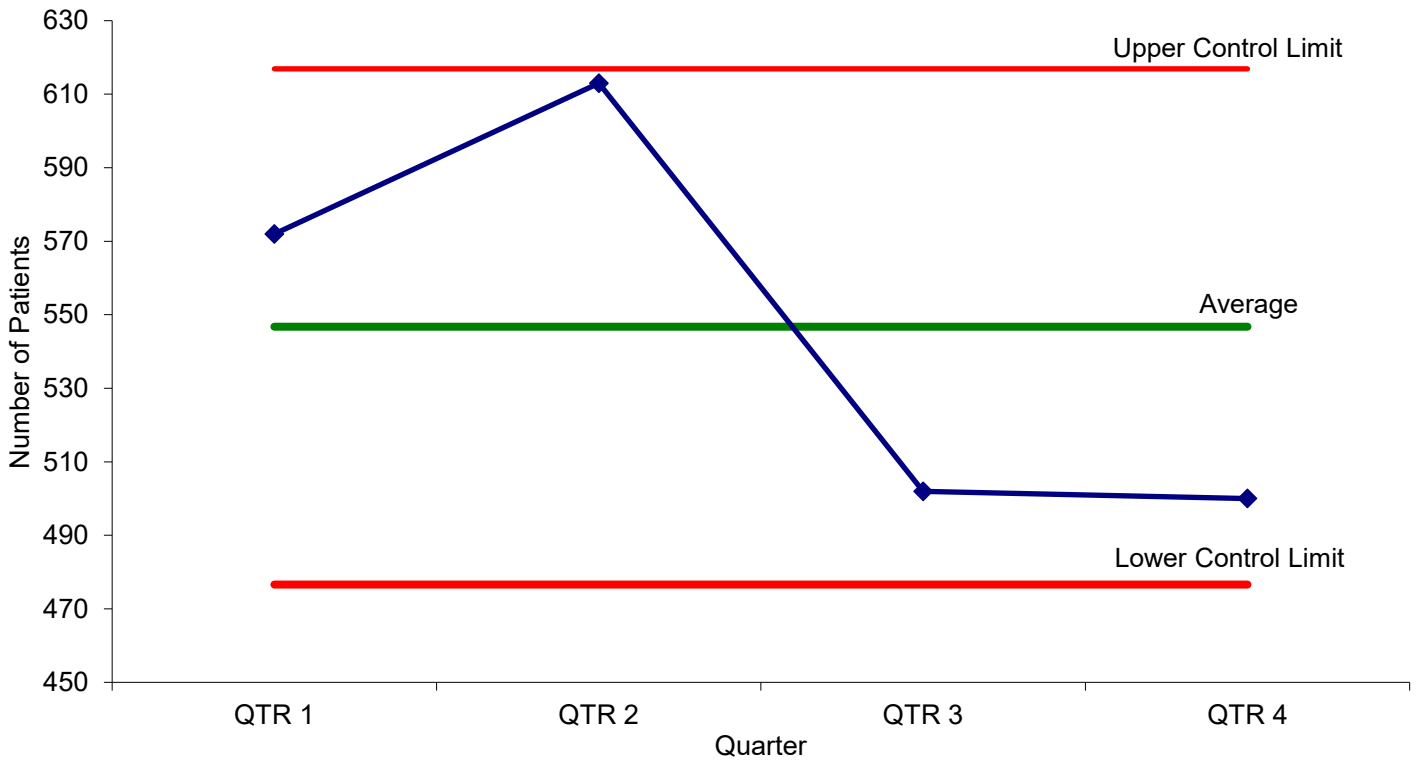


Use of Section 135 per HB

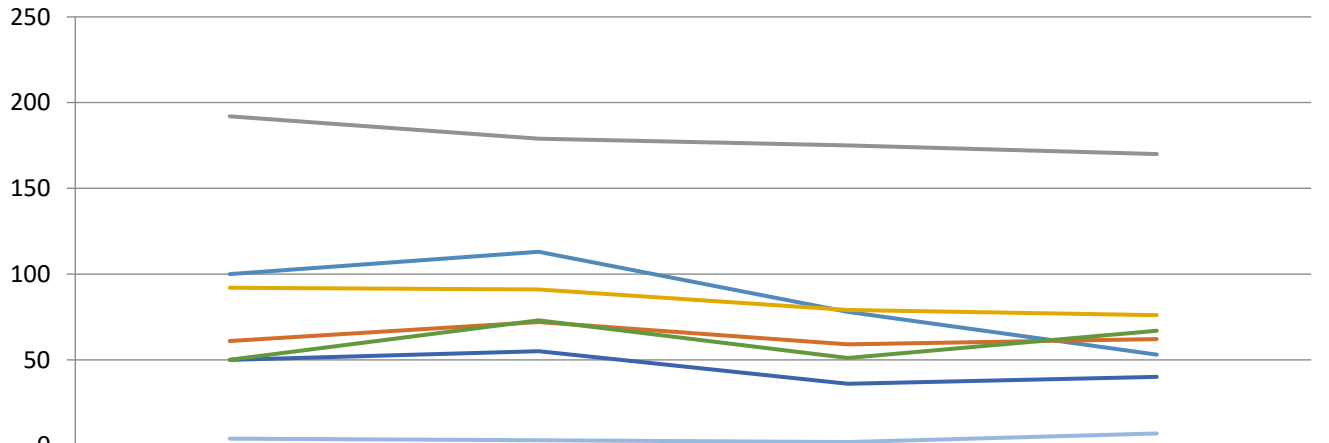


	QTR 1	QTR 2	QTR 3	QTR 4
HB 1	0	0	1	1
HB 2	1	5	4	4
HB 3	1	2	1	6
HB 4	2	3	4	3
HB 5	2	4	4	1
HB 6	2	0	1	0
HB 7	0	0	0	0

Use of Section 136 during the period

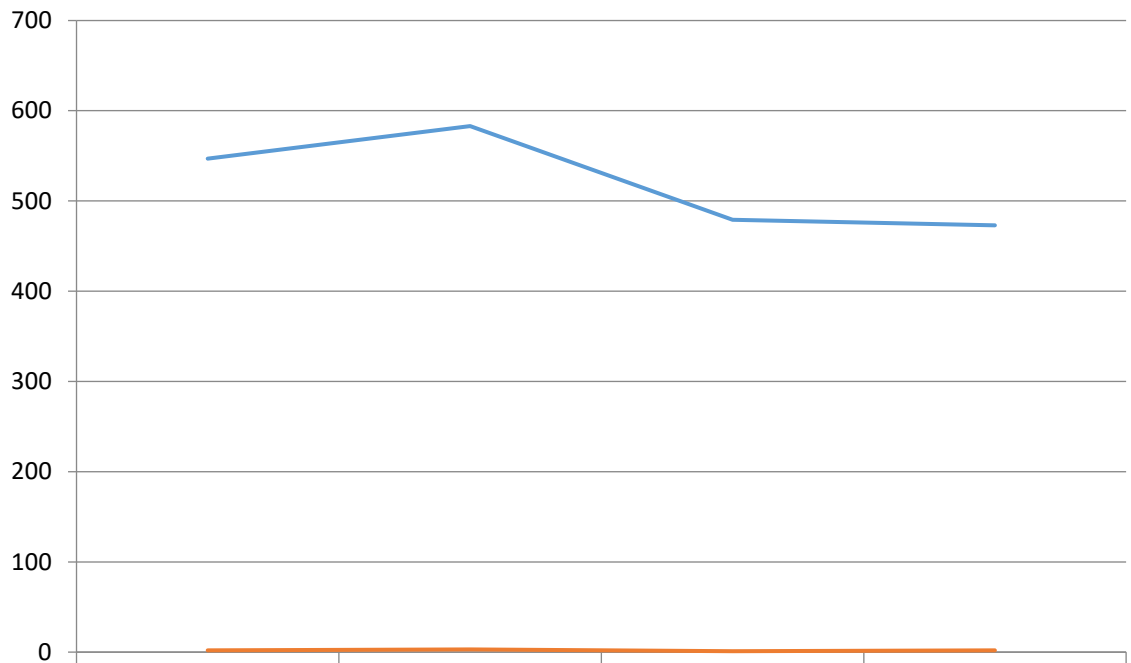


Use of Section 136 per HB



	QTR 1	QTR 2	QTR 3	QTR 4
HB 1	100	113	78	53
HB 2	61	72	59	62
HB 3	192	179	175	170
HB 4	92	91	79	76
HB 5	50	55	36	40
HB 6	50	73	51	67
HB 7	4	3	2	7

Places of Safety used



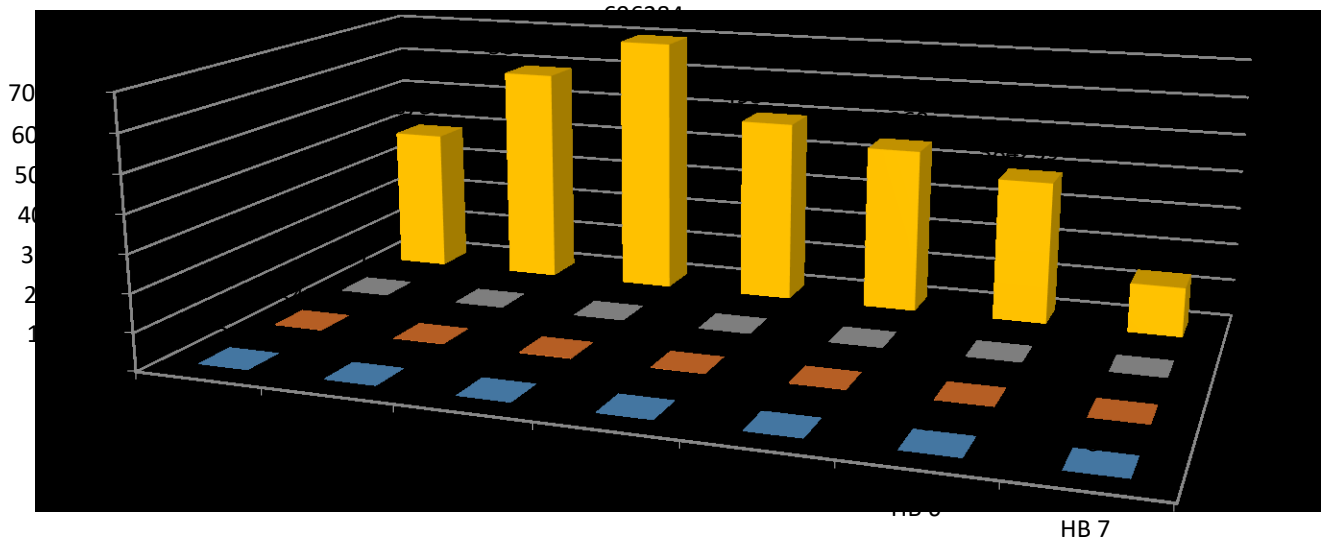
	QTR 1	QTR 2	QTR 3	QTR 4
Section 136 (Hospital)	547	583	479	473
Section 136 (Custody)	2	3	1	2

The above charts show a rapid and significant decrease in the use of Section 136 during the period, between Quarters 2 and 3. This decrease was across all Health Boards, with some showing a larger decrease than others.

Also shown is the minimal use of Custody as the Place of Safety, of which the total across Wales is eight during the period.

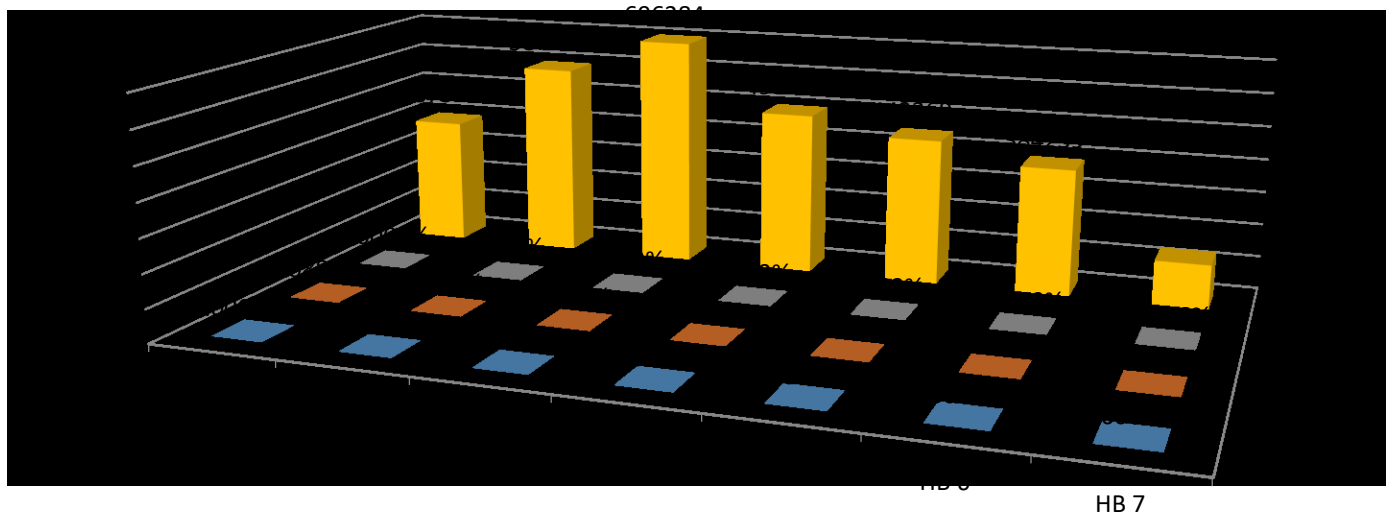
Section 135 and 136 Compared to Health Board Population

Section 135 and 136 Compared to Health Board Population (Numbers)



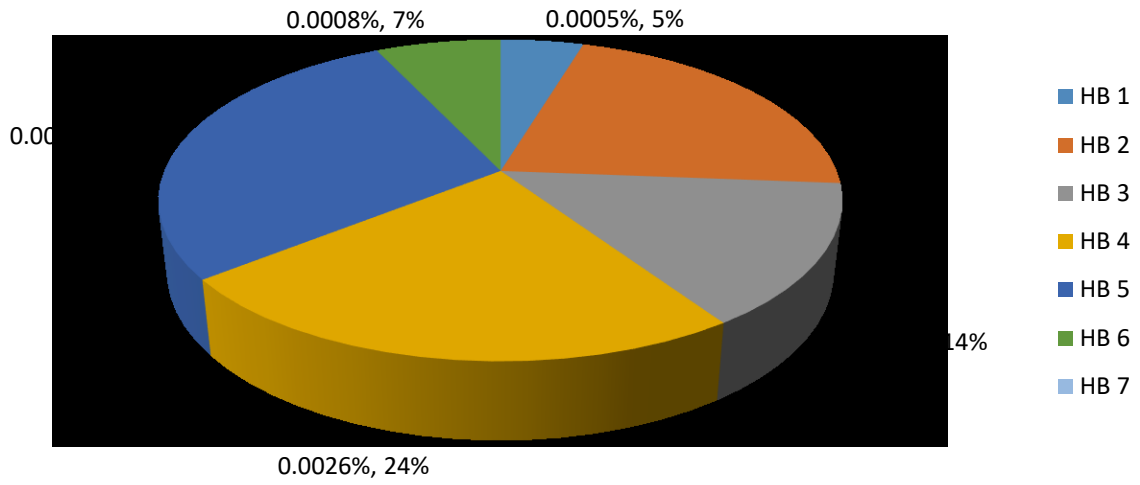
	HB 1	HB 2	HB 3	HB 4	HB 5	HB 6	HB 7
Section 135	2	14	11	13	14	3	0
Section 136 (Hospital)	343	282	742	356	190	249	16
Section 136 (Custody)	1	0	6	1	1	0	0
HB Population	387570	587743	696284	493446	443368	384239	132515

Section 135 and 136 Compared to Health Board Population (Percentage)

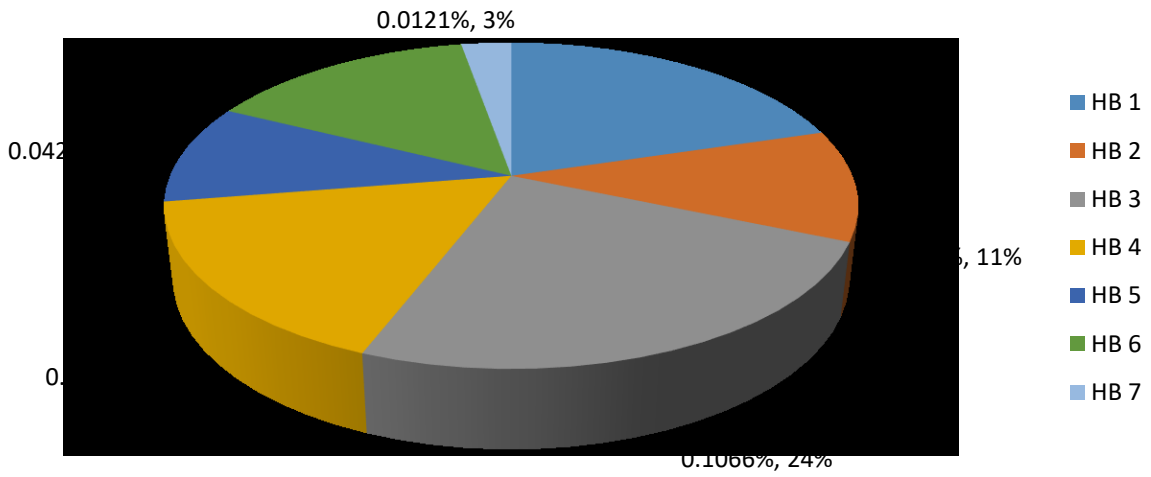


	HB 1	HB 2	HB 3	HB 4	HB 5	HB 6	HB 7
Section 135 to UHB Population	0.0005%	0.0024%	0.0016%	0.0026%	0.0032%	0.0008%	0.0000%
Section 136 (Hospital) to UHB Population	0.0885%	0.0480%	0.1066%	0.0721%	0.0429%	0.0648%	0.0121%
Section 136 (Custody) to UHB Population	0.0003%	0.0000%	0.0009%	0.0002%	0.0002%	0.0000%	0.0000%
HB Population	387570	587743	696284	493446	443368	384239	132515

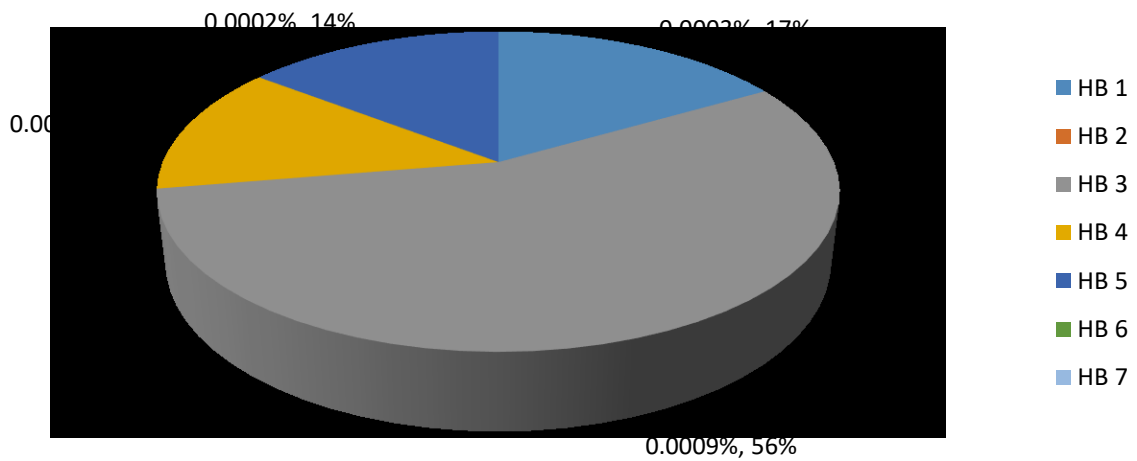
Section 135 to UHB Population



Section 136 (Hospital) to UHB Population

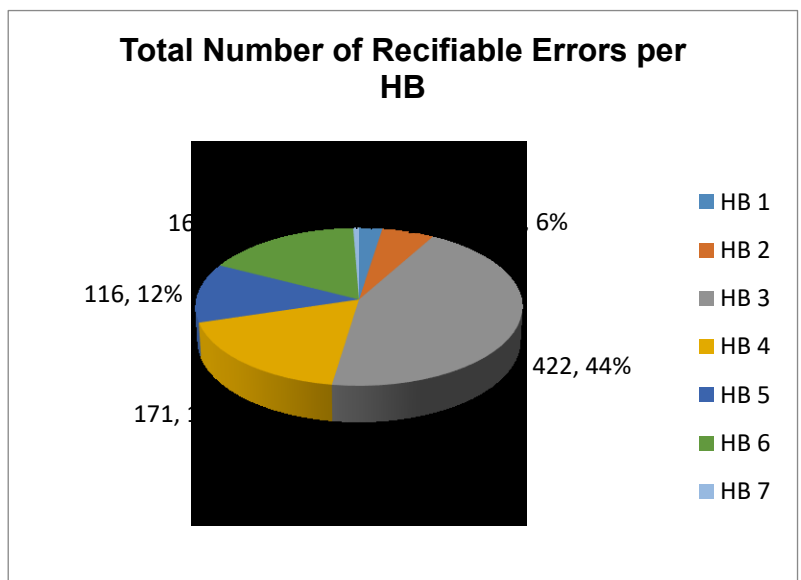
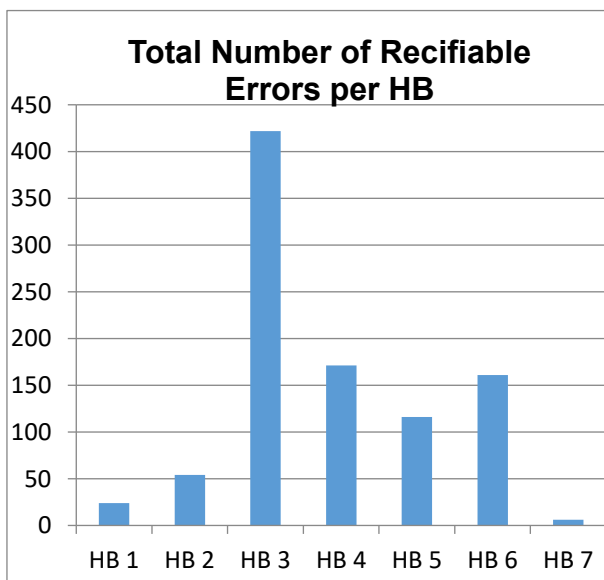
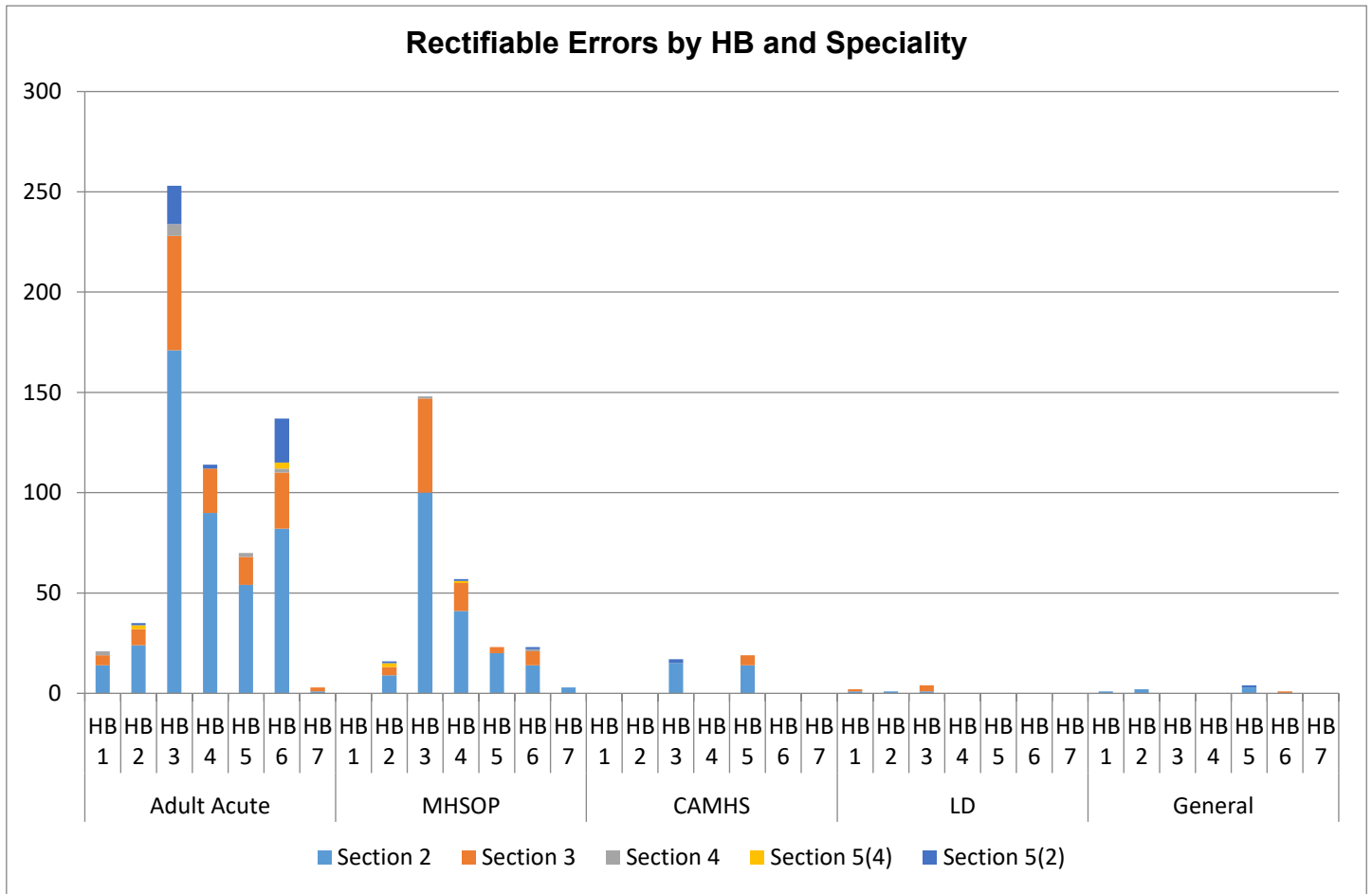


Section 136 (Custody) to UHB Population

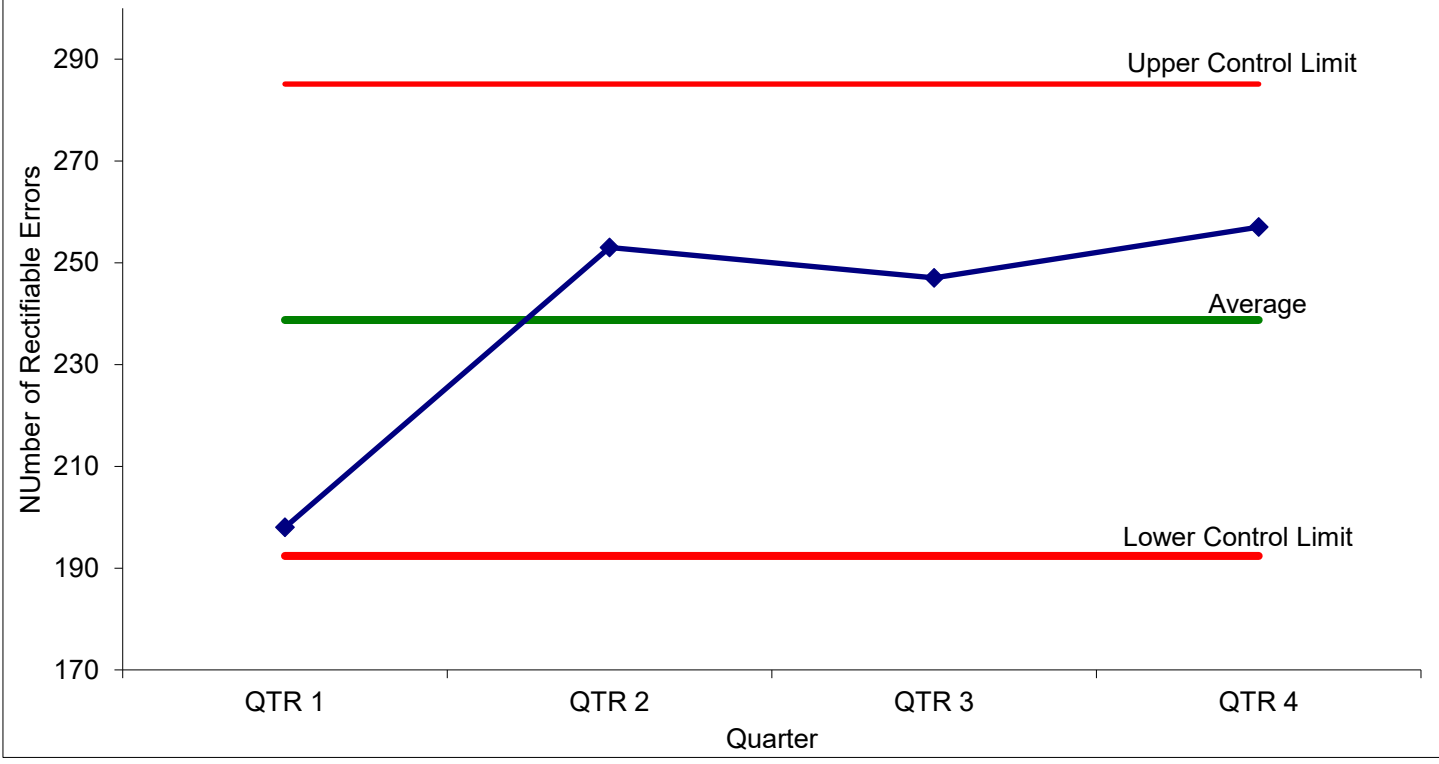


Rectifiable Errors

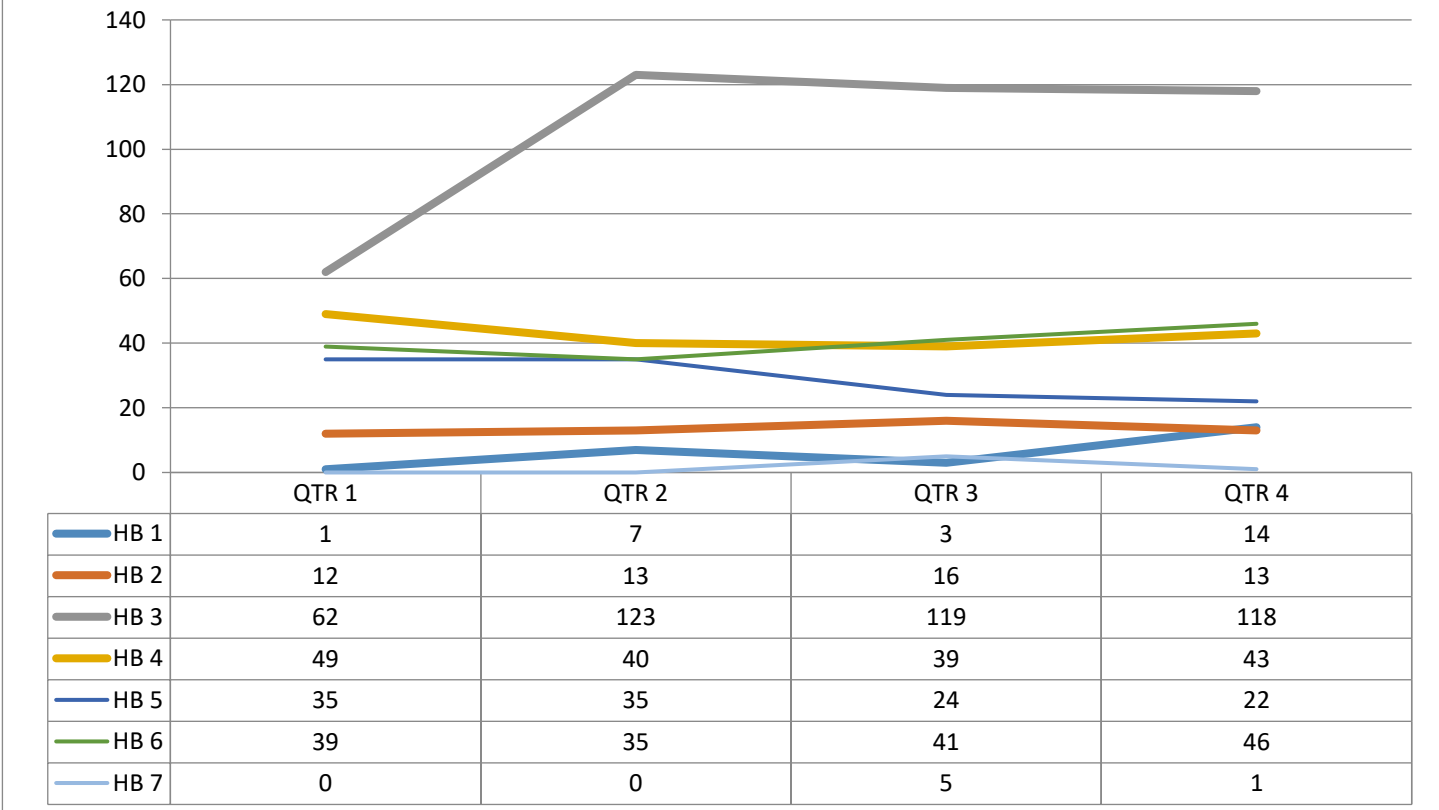
Rectifiable errors by HB and speciality.



Rectifiable Errors during the period

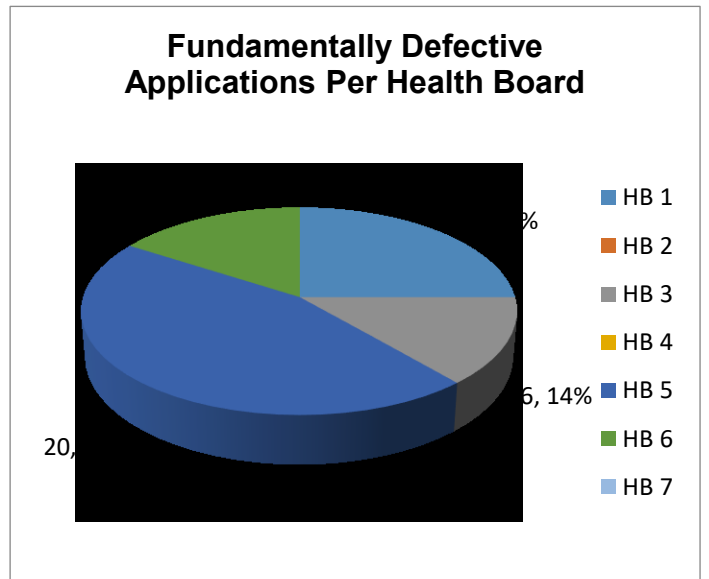
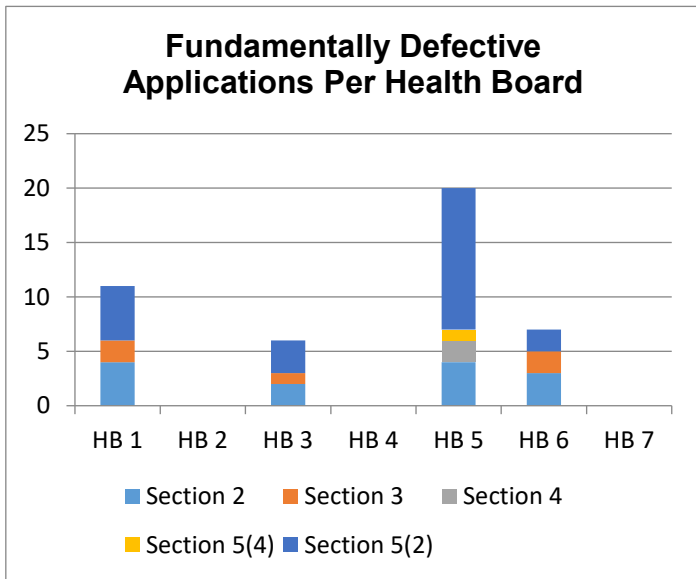
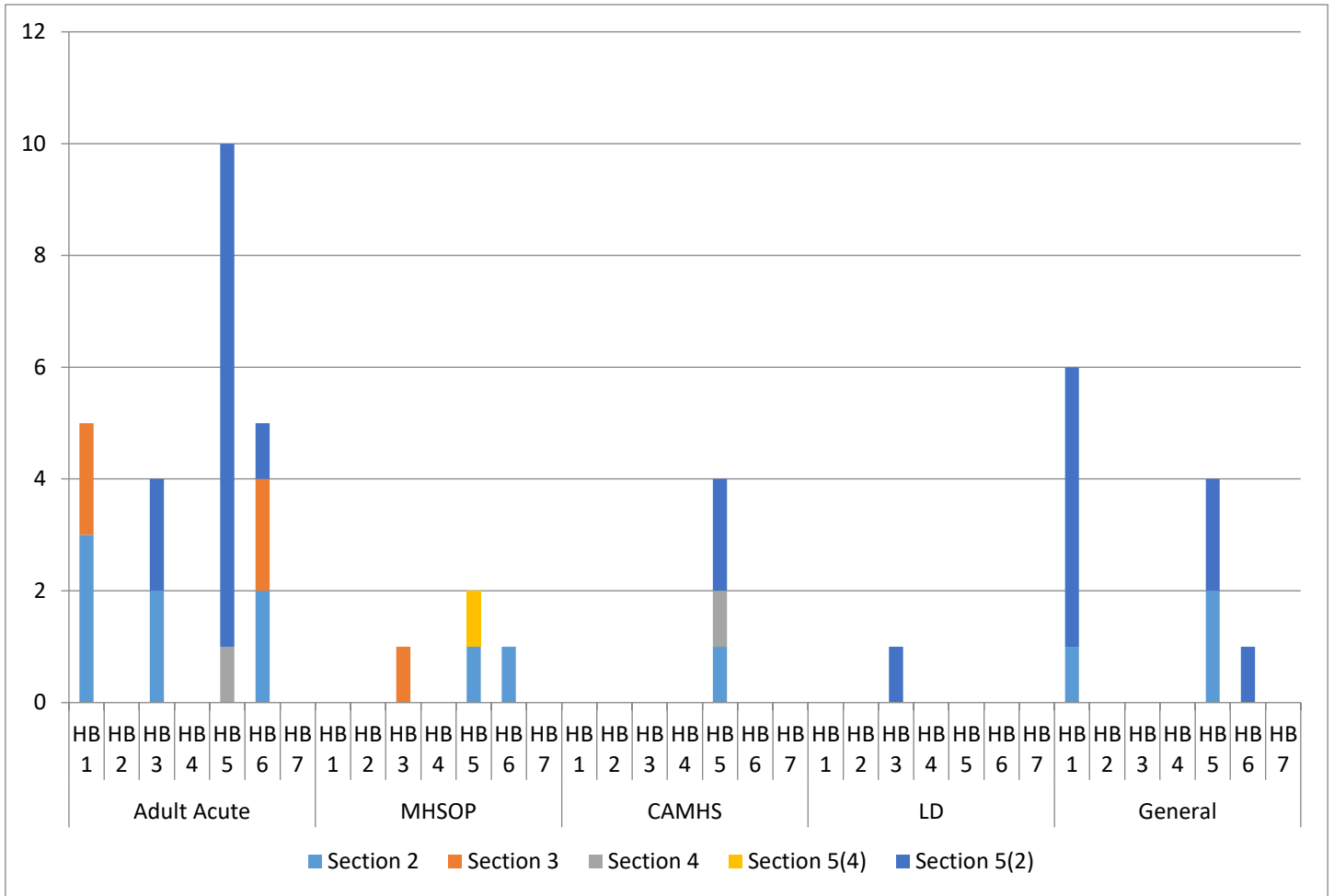


Rectifiable Errors per HB



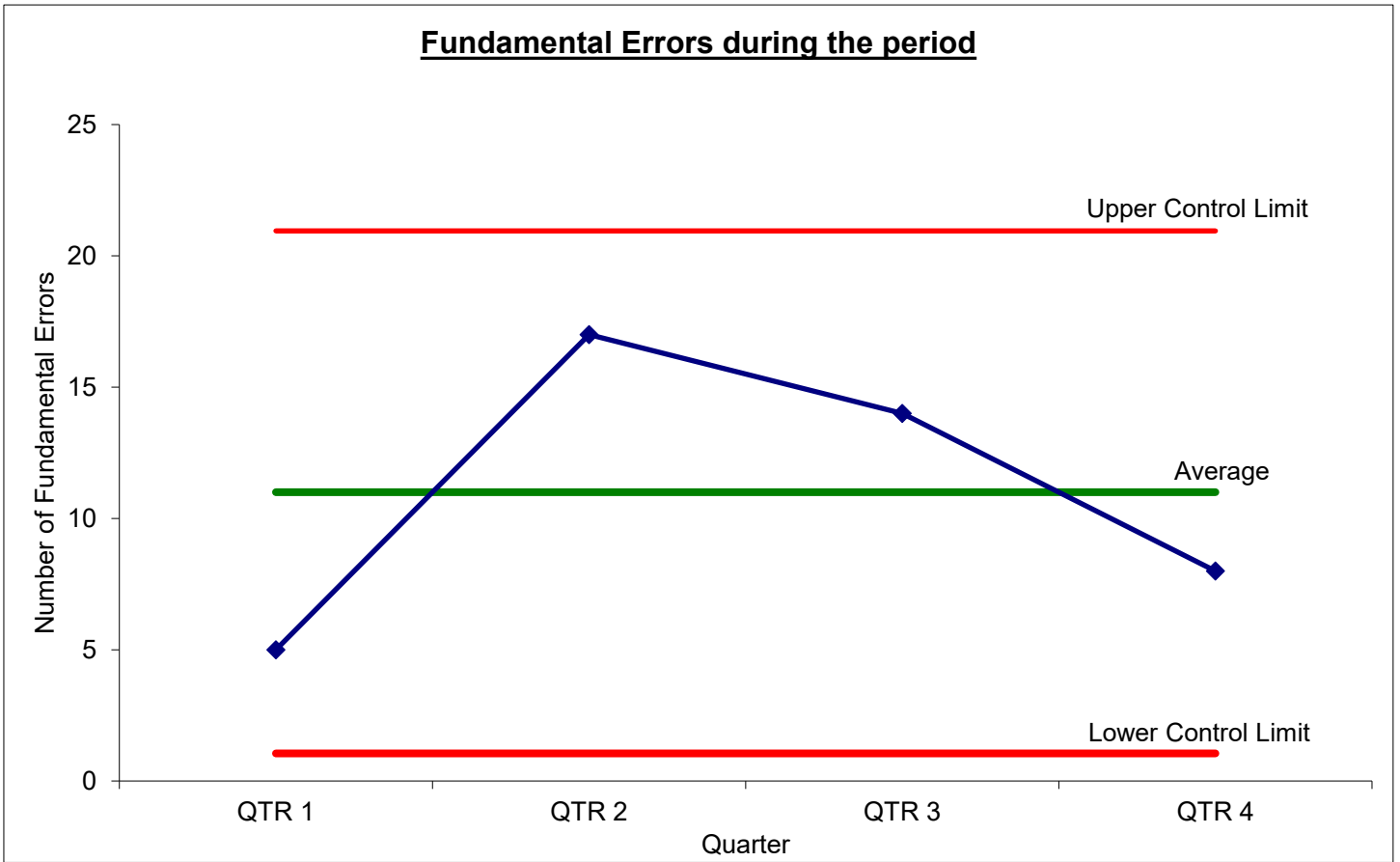
Fundamentally Defective

Number of fundamentally defective applications by speciality and HB.

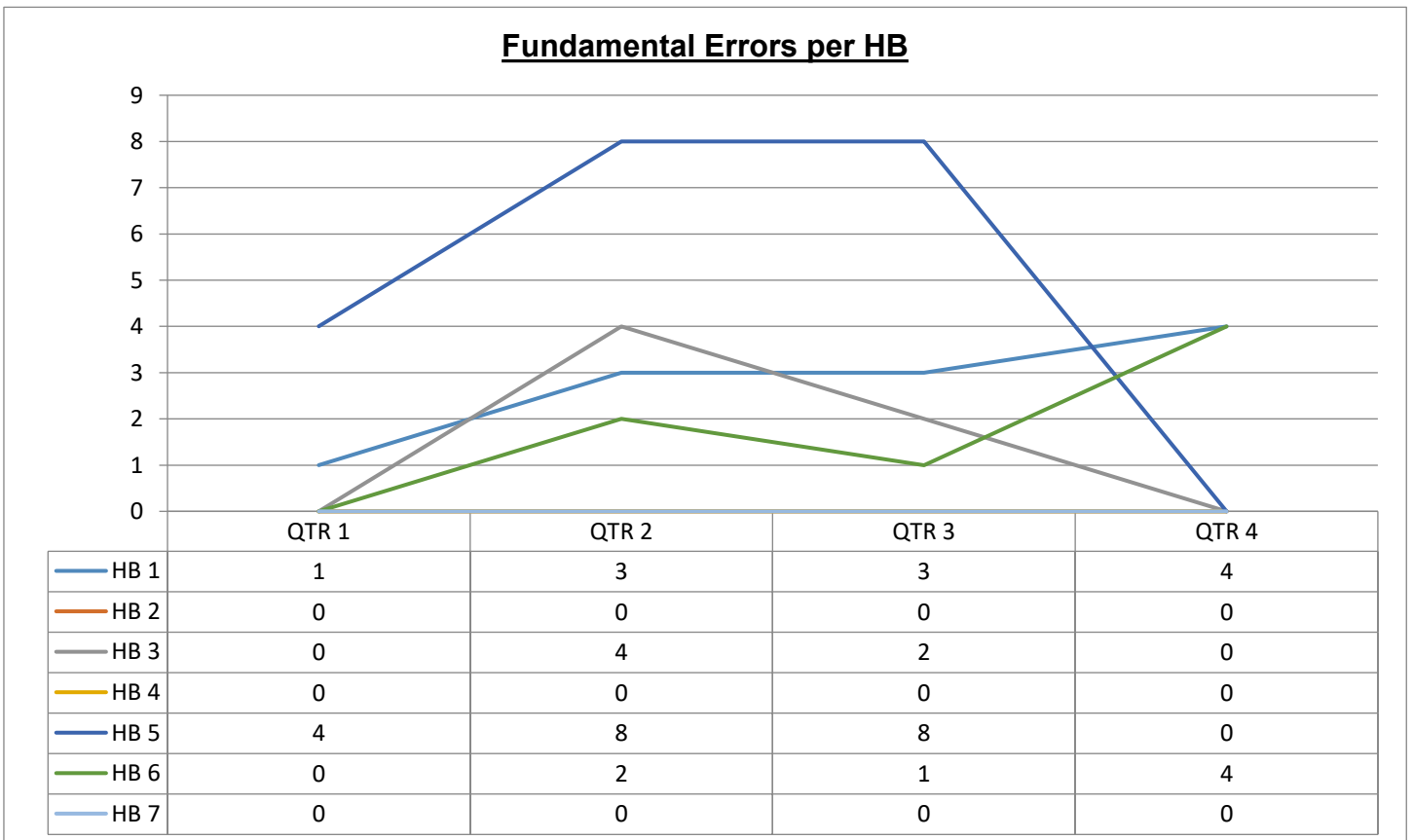


Fundamentally Defective Yearly Activity

Fundamental Errors during the period

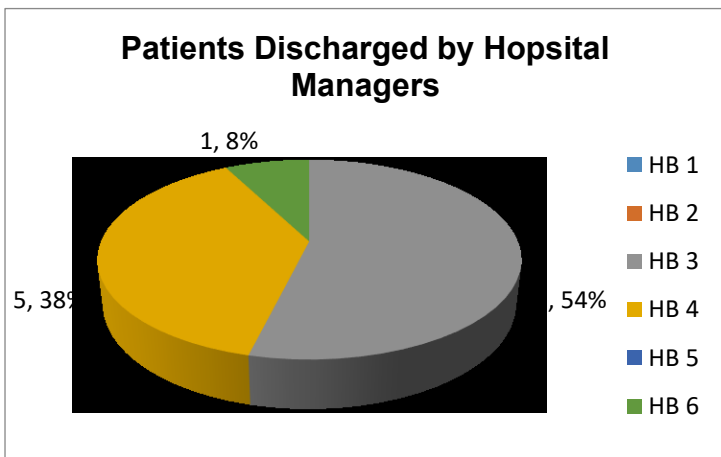
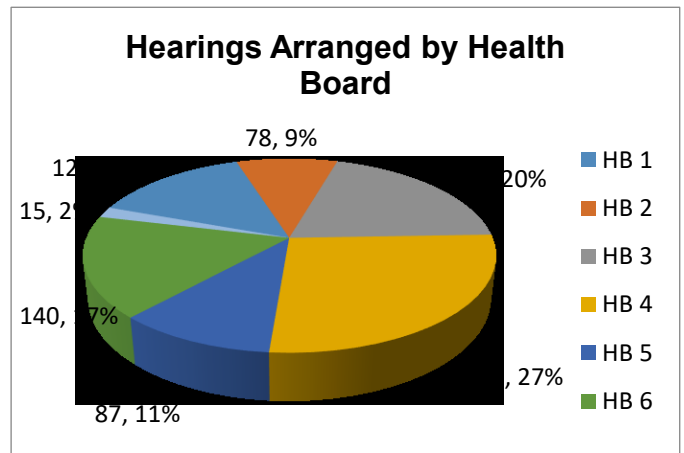
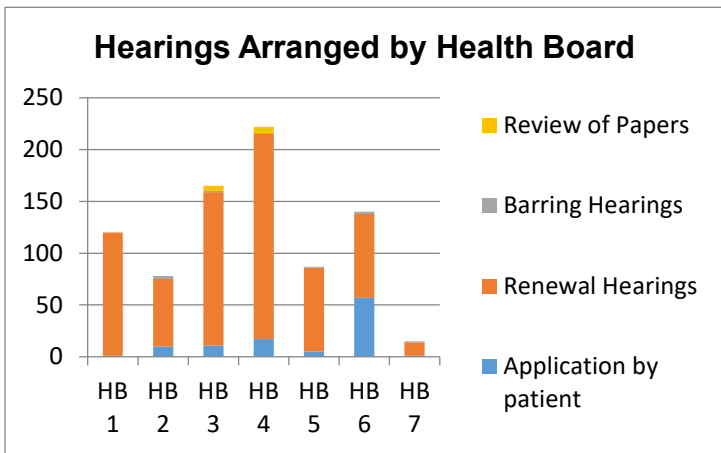
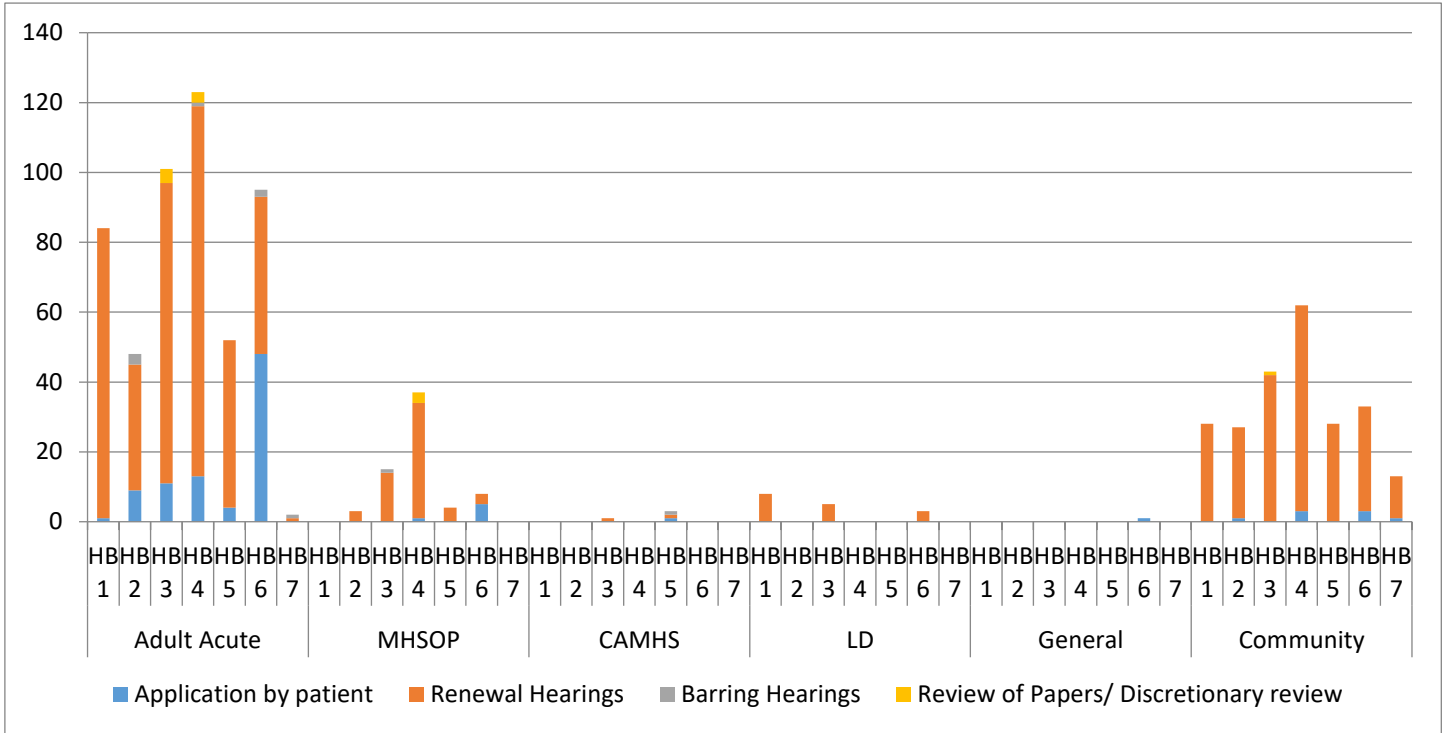


Fundamental Errors per HB

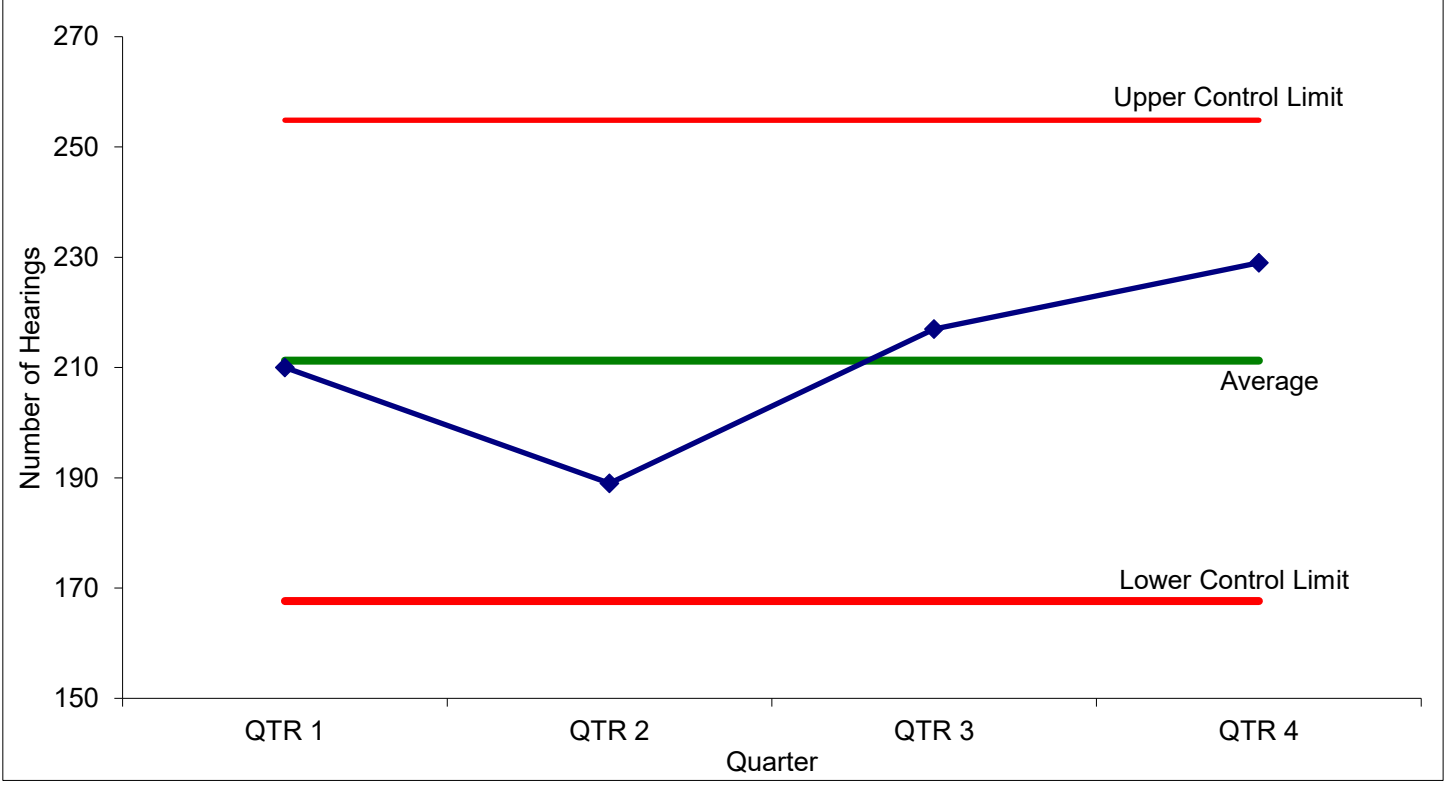


Hospital Manager Hearings Activity

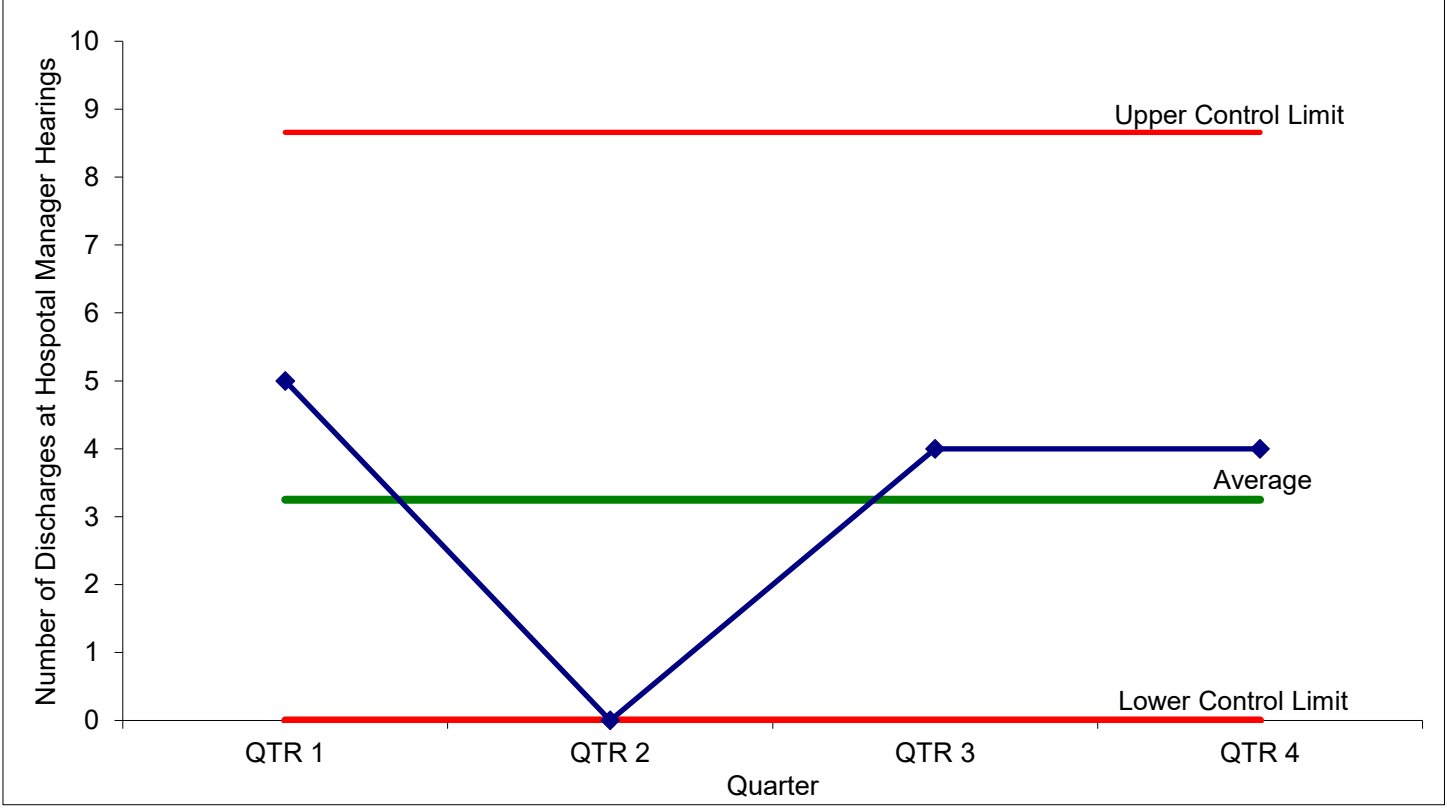
Hospital Managers' Hearings arranged during the period by speciality and HB.



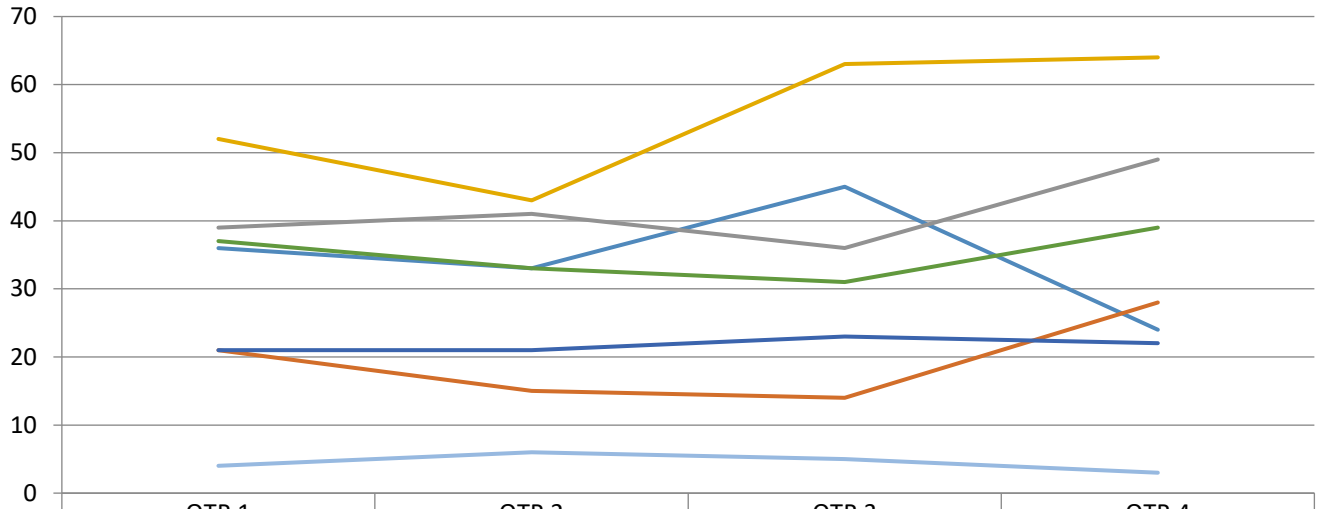
Hospital Manager Hearings Arranged during the period



Patients Discharged from Detention at Hospital Manager Hearings

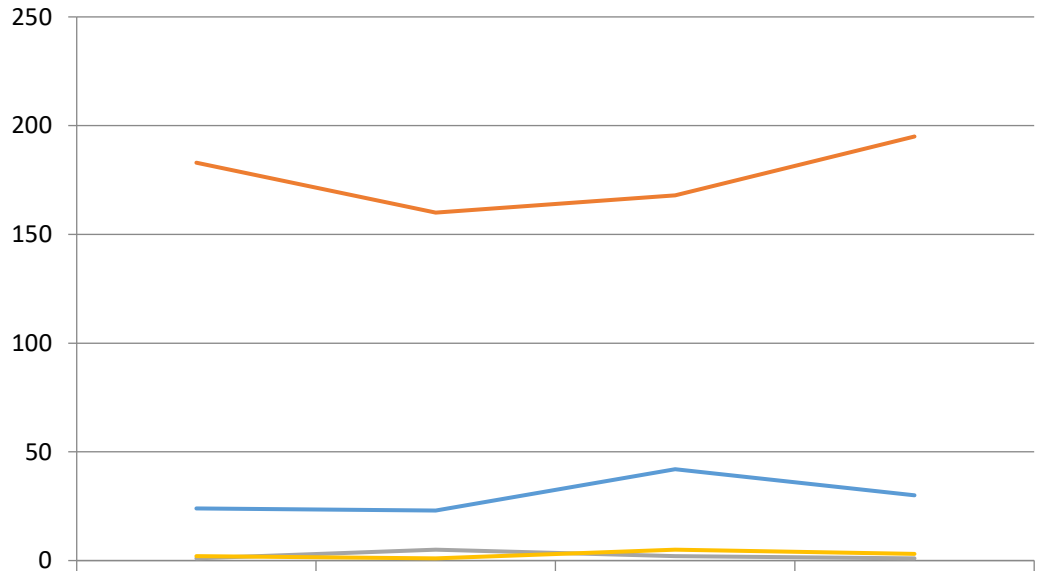


Hospital Manager Hearings Arranged per HB



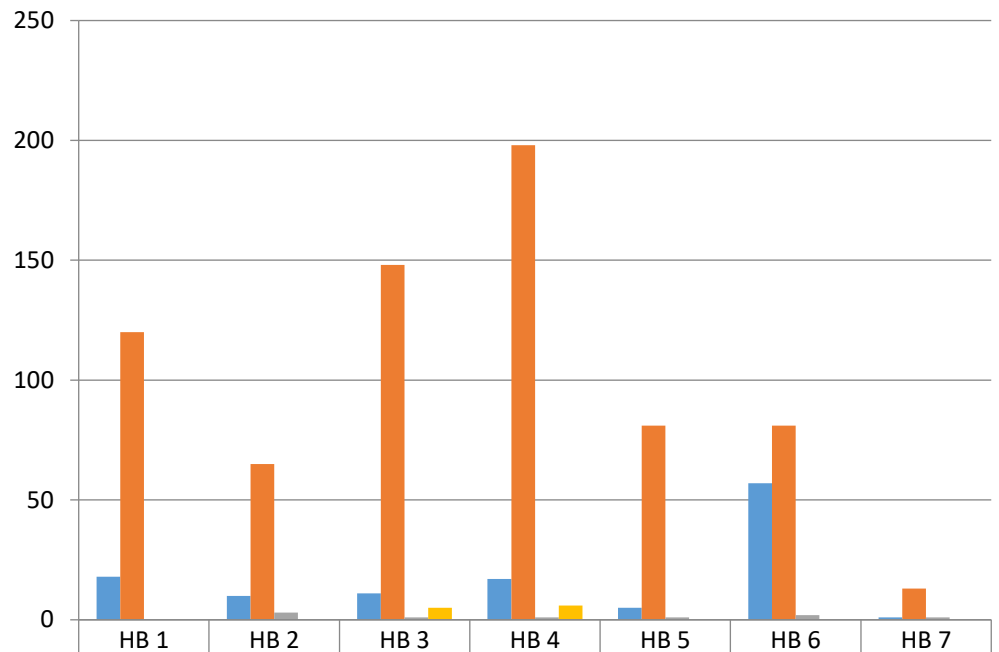
	QTR 1	QTR 2	QTR 3	QTR 4
— HB 1	36	33	45	24
— HB 2	21	15	14	28
— HB 3	39	41	36	49
— HB 4	52	43	63	64
— HB 5	21	21	23	22
— HB 6	37	33	31	39
— HB 7	4	6	5	3

Source of Hospital Manager Hearings



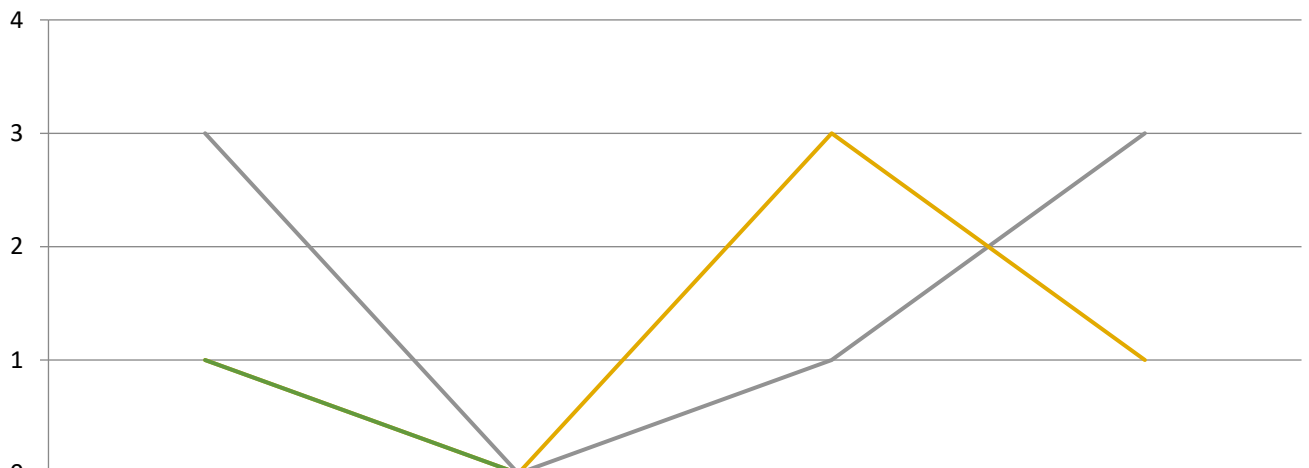
	QTR 1	QTR 2	QTR 3	QTR 4
— Application by patient	24	23	42	30
— Renewal Hearings	183	160	168	195
— Barring Hearings	1	5	2	1
— Review of Papers/ Discretionary review	2	1	5	3

Source of Hospital Manager Hearings per HB



Application by patient	18	10	11	17	5	57	1
Renewal Hearings	120	65	148	198	81	81	13
Barring Hearings	0	3	1	1	1	2	1
Review of Papers/ Discretionary review	0	0	5	6	0	0	0

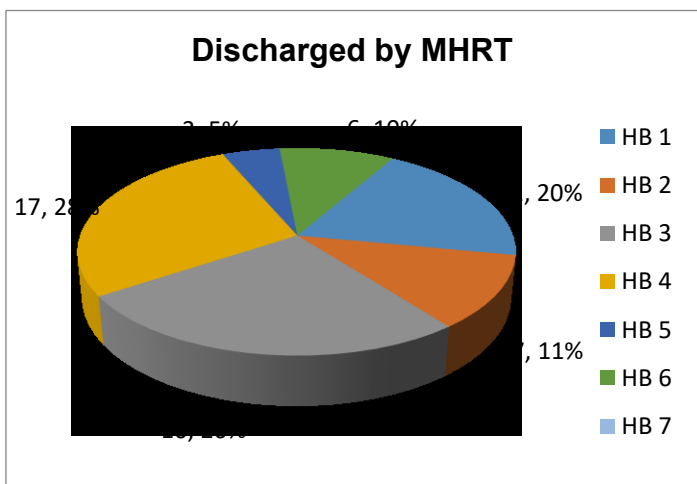
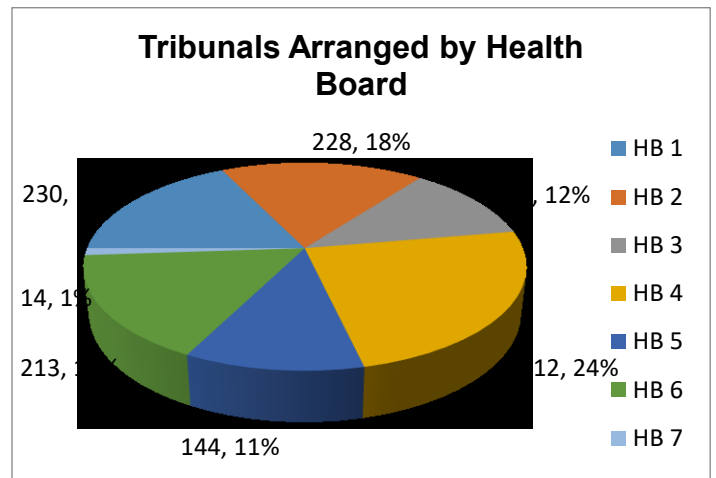
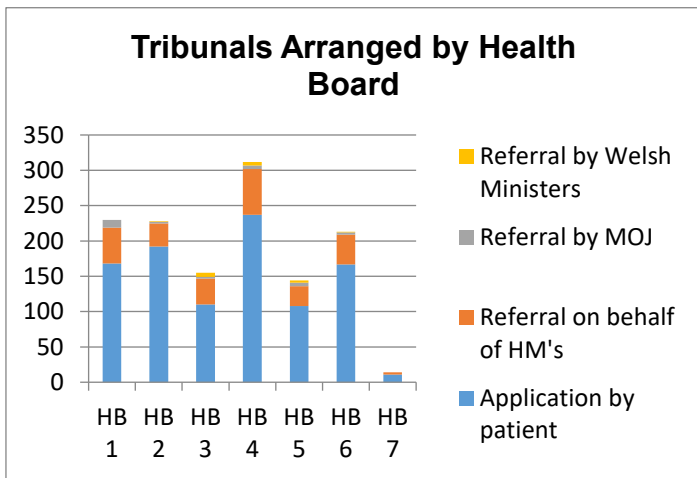
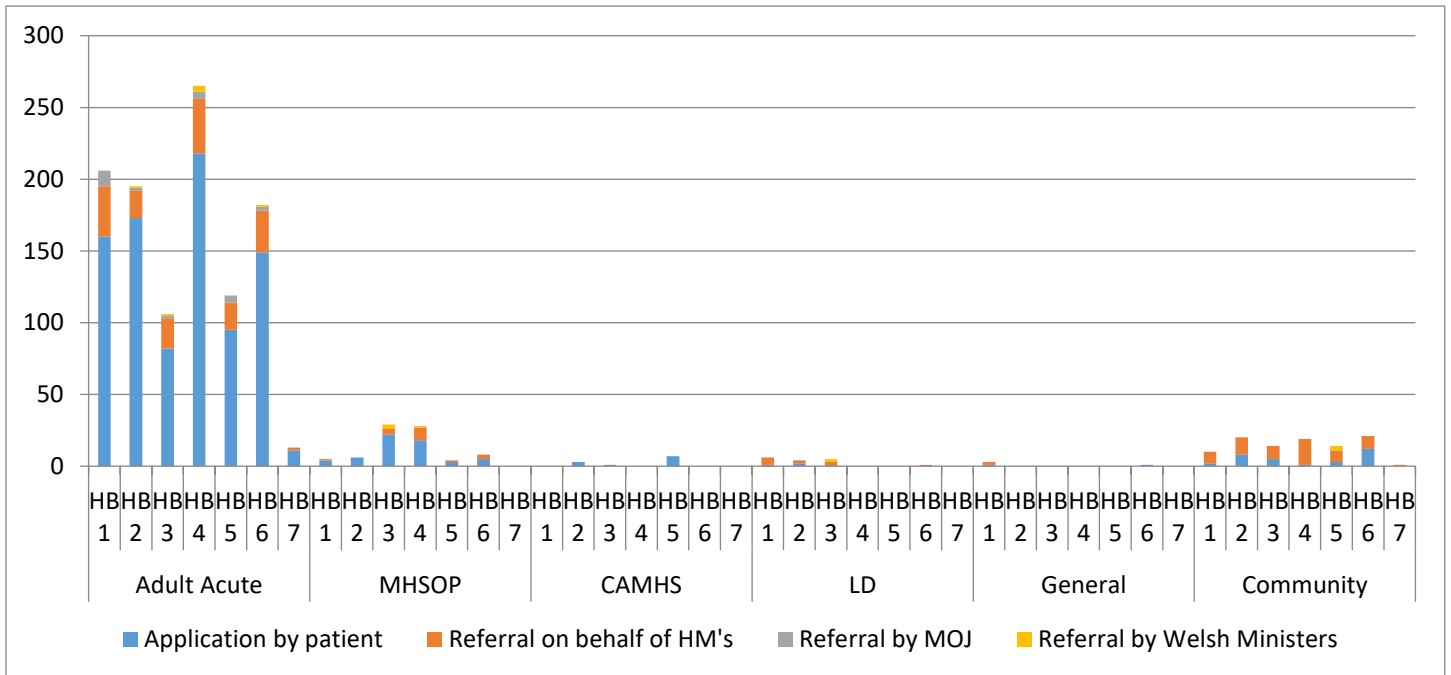
Patients Discharged from Detention at Hospital Manager Hearings



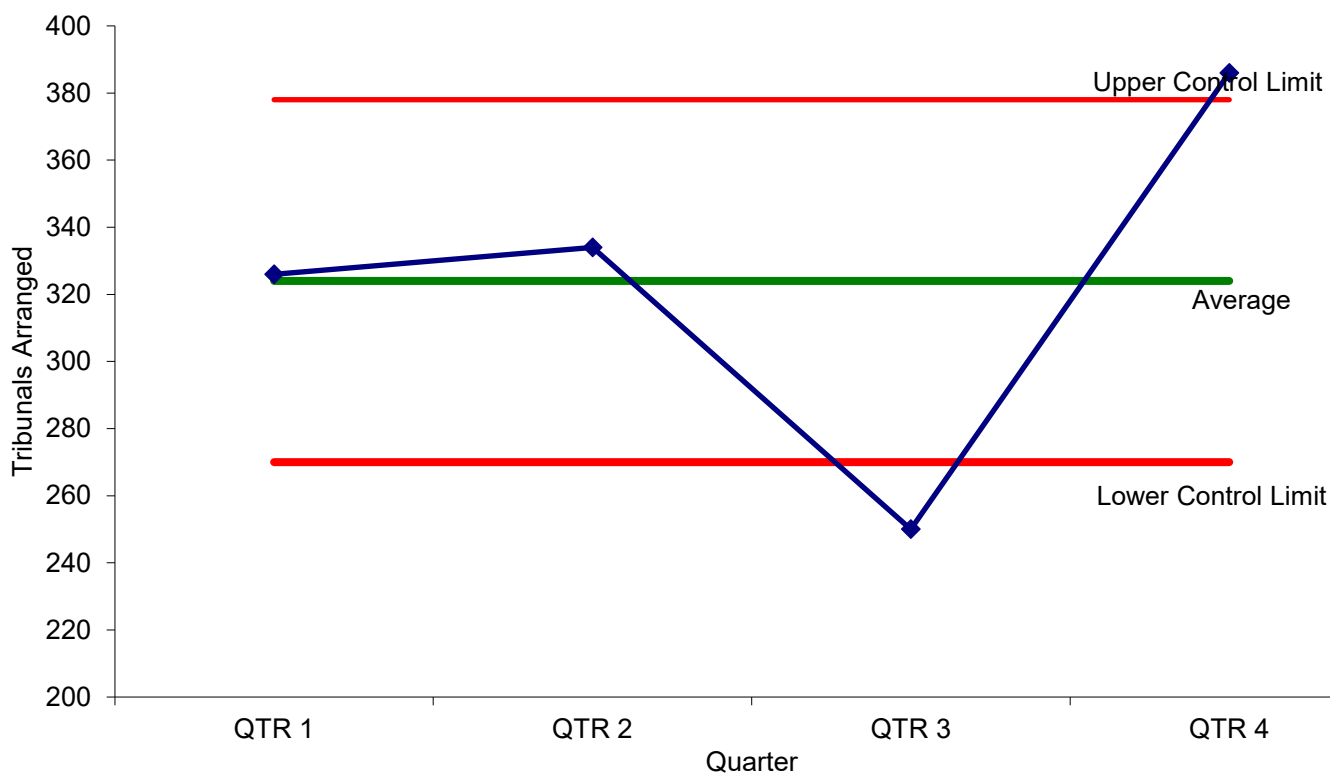
	QTR 1	QTR 2	QTR 3	QTR 4
HB 1	0	0	0	0
HB 2	0	0	0	0
HB 3	3	0	1	3
HB 4	1	0	3	1
HB 5	0	0	0	0
HB 6	1	0	0	0
HB 7	0	0	0	0

MHRT Activity

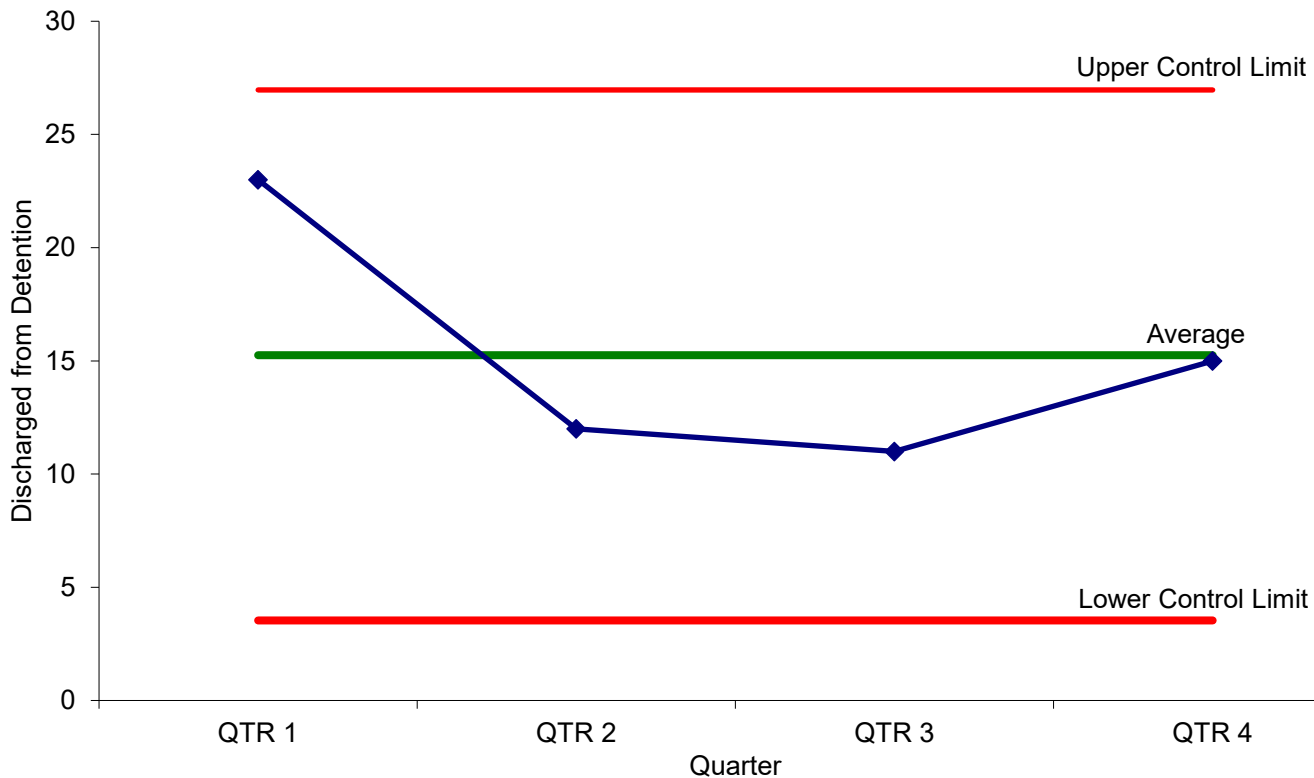
Mental Review Tribunal arranged during the period by speciality and HB.



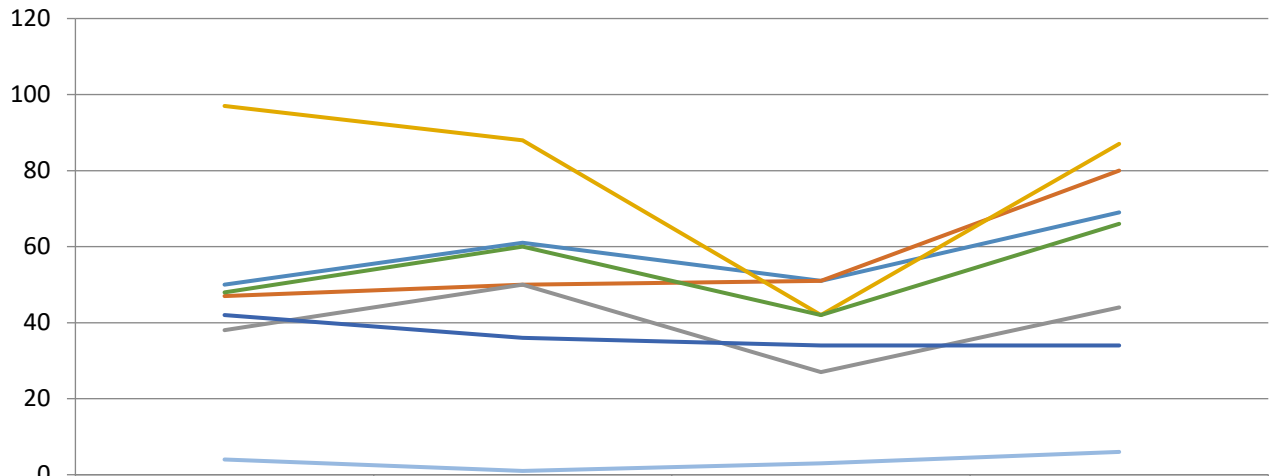
Mental Health Review Tribunals Arranged during the period



Patients Discharged from Detention by a Mental Health Review Tribunal during the period

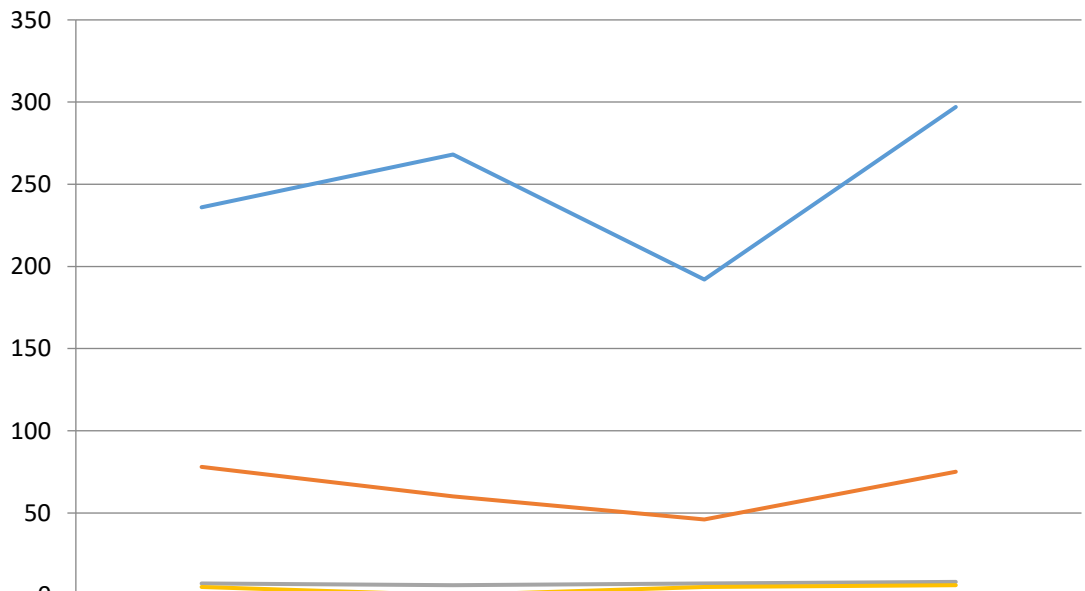


Mental Health Review Tribunals Arranged per HB



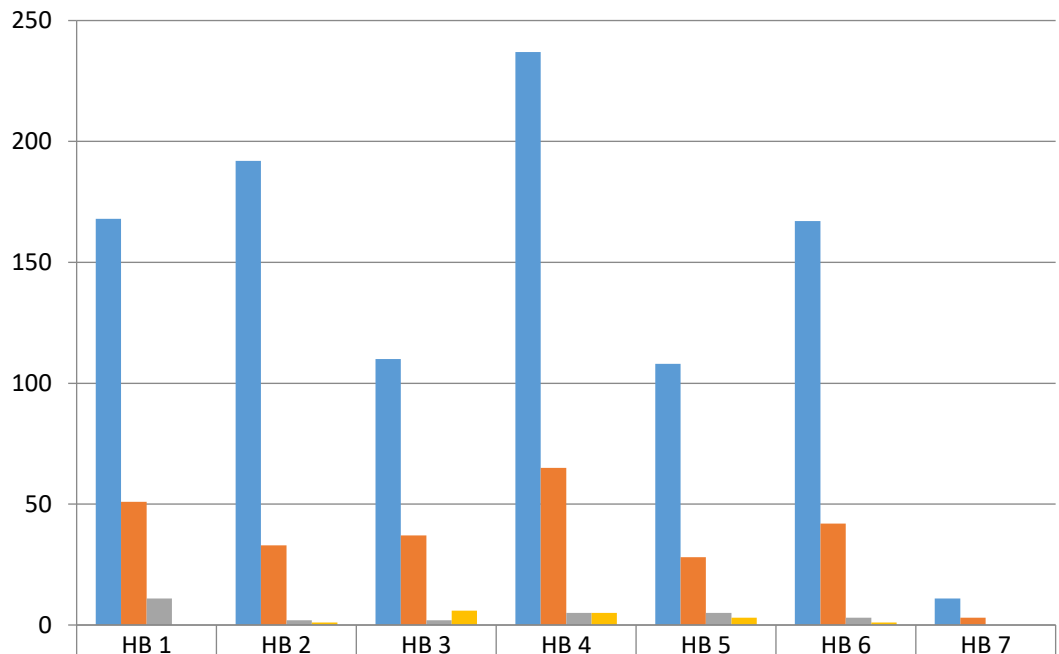
	QTR 1	QTR 2	QTR 3	QTR 4
— HB 1	50	61	51	69
— HB 2	47	50	51	80
— HB 3	38	50	27	44
— HB 4	97	88	42	87
— HB 5	42	36	34	34
— HB 6	48	60	42	66
— HB 7	4	1	3	6

Source of Applications for a Mental Health Review Tribunal



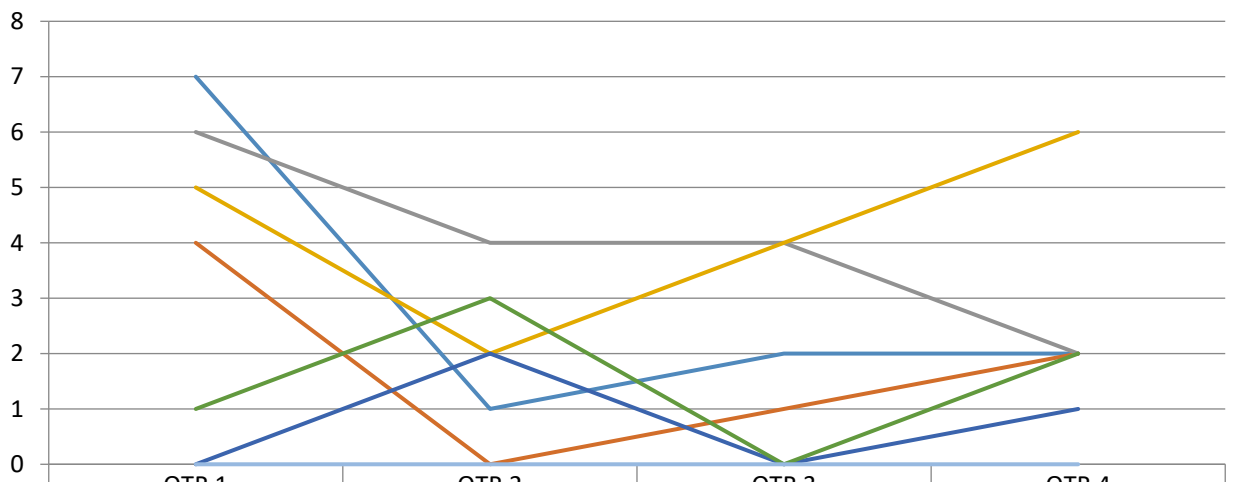
	QTR 1	QTR 2	QTR 3	QTR 4
— Application by patient	236	268	192	297
— Hospital Managers	78	60	46	75
— Ministry of Justice	7	6	7	8
— Welsh Ministers	5	0	5	6

Source of Applications for a Mental Health Review Tribunal per HB



	HB 1	HB 2	HB 3	HB 4	HB 5	HB 6	HB 7
Application by patient	168	192	110	237	108	167	11
Referral on behalf of HM's	51	33	37	65	28	42	3
Referral by MOJ	11	2	2	5	5	3	0
Referral by Welsh Ministers	0	1	6	5	3	1	0

Patients Discharged from Detention by Mental Health Review Tribunal



	QTR 1	QTR 2	QTR 3	QTR 4
HB 1	7	1	2	2
HB 2	4	0	1	2
HB 3	6	4	4	2
HB 4	5	2	4	6
HB 5	0	2	0	1
HB 6	1	3	0	2
HB 7	0	0	0	0