

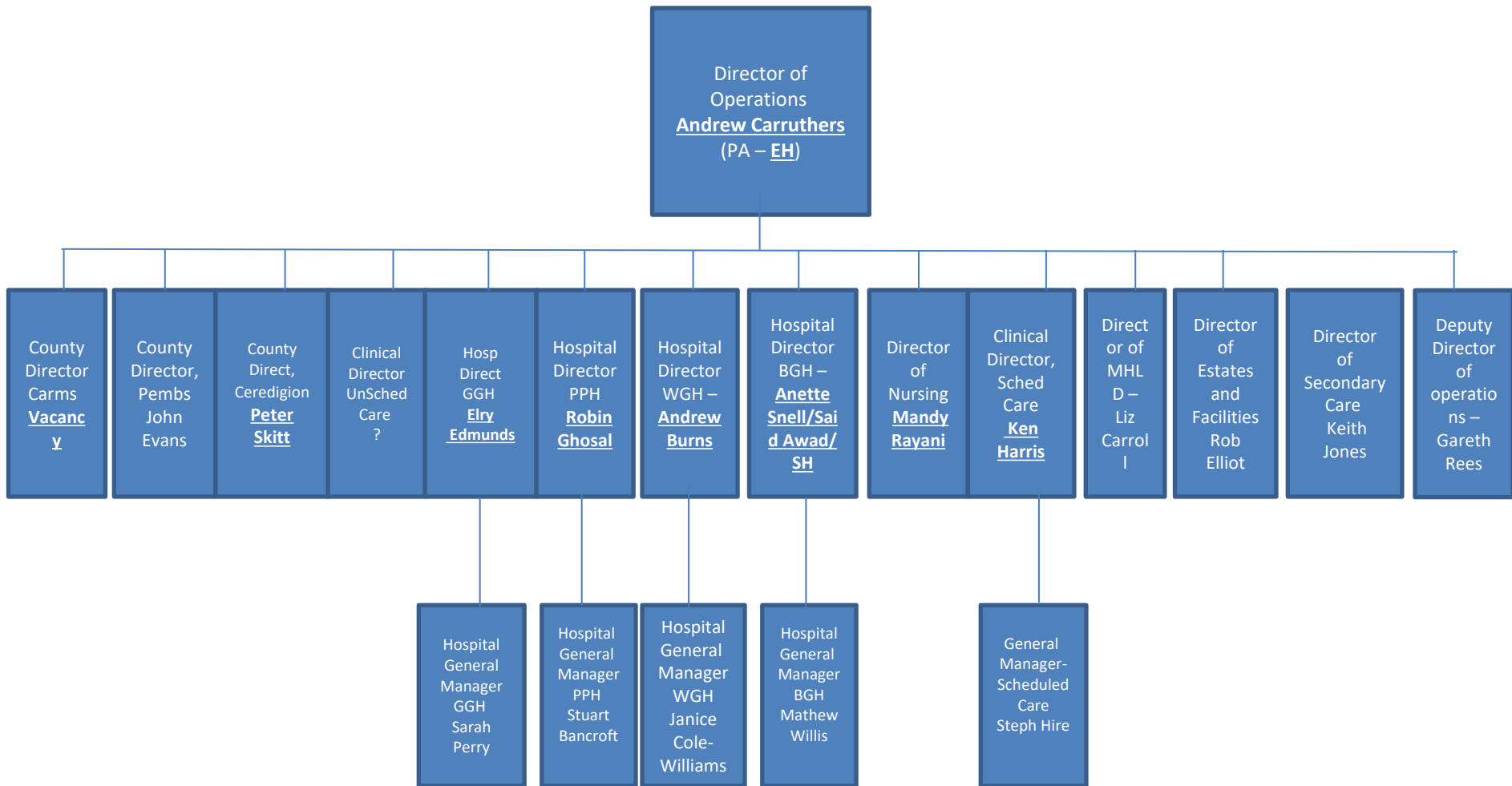


GIG
CYMRU
NHS
WALES

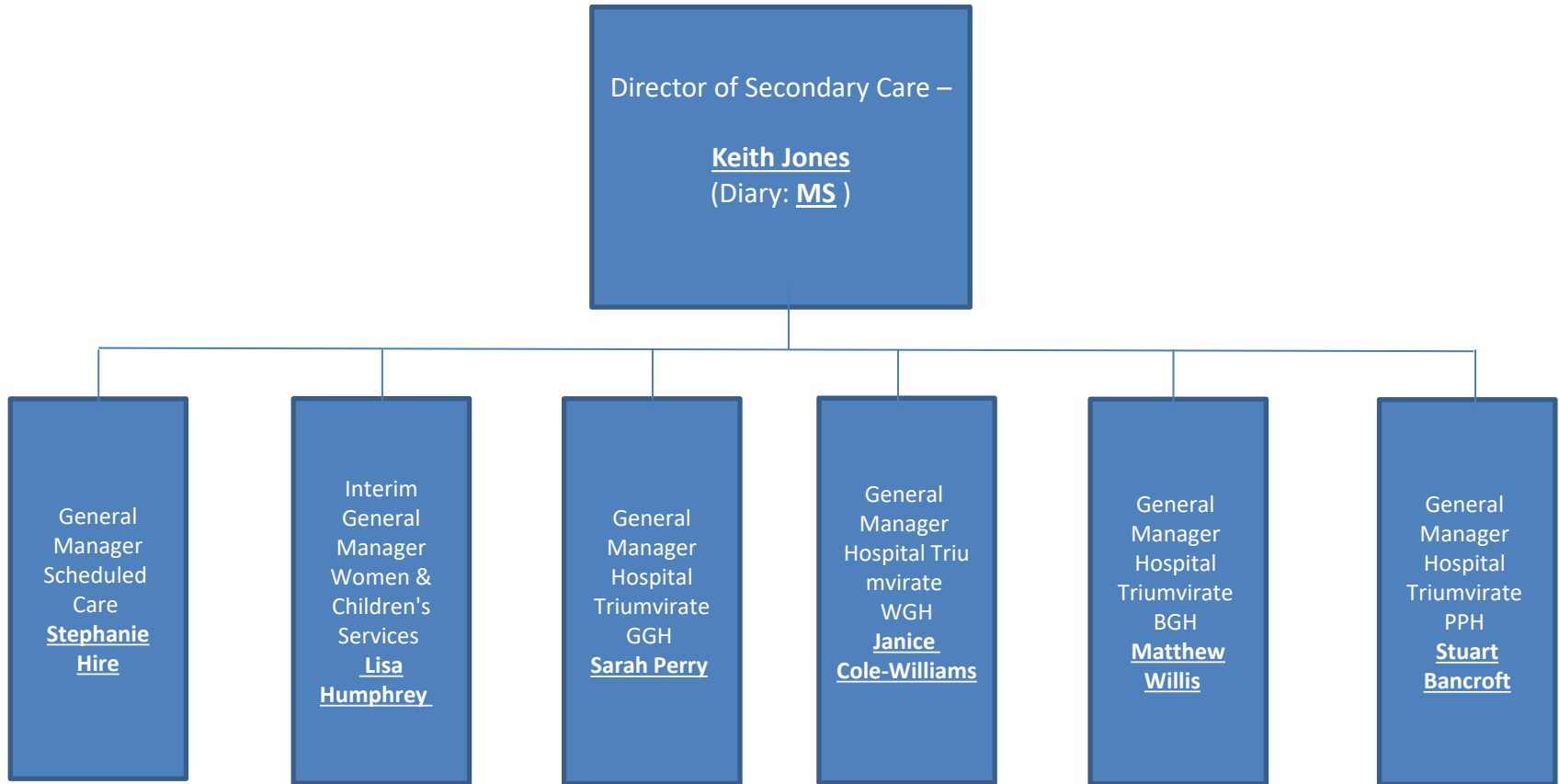
Bwrdd Iechyd Prifysgol
Hywel Dda
University Health Board

**Operations Directorate
Management Structure
May 2023**

Directors Department



Secondary Care Directorate



Scheduled Care

Scheduled Care Directorate Organizational Chart

Ken Harries
Clinical Director

Stephanie Hire
General Manager

Karen Barker
Head of Nursing (retiring)

Portfolio Teams

Dermatology
Neurology

Trauma &
Orthopaedics
Plaster Techs
Rheumatology
Local Trauma
Team
Pain

General Surgery
Breast
Colorectal
Vascular
ENT
Audiology

Outpatients
Performance &
Transformation

Ophthalmology

Theatre Services
Day Surgery
Pre-Assessment
Waiting List
Anaesthetics
Critical Care

Urology

Endoscopy
Gastroenterology

CW
Service Delivery
Manager,
Dermatology
DM
Senior Service
Manager,
Dermatology &
Neurology

LD
Service Delivery
Manager

CL
Service Delivery
Manager

CW
Service Delivery
Manager OPD
AJ
Service Delivery
Manager,
Performance &
Transformation

VC
Service Delivery
Manager

DK
Service Delivery
Manager

NG
Service Delivery
Manger

SE
Service Delivery
Manager

OE
Clinical Lead
SO
Clinical Lead
(pain)
SG
(GGH&PPH)
Clinical Lead
(Major Trauma
Unit)
JB
Clinical Lead
Rheumatology

AD
Clinical Lead
General Surgery
GJ
Clinical Lead
(ENT)
CD/LF
Clinical Lead
Vascular/WW
vascular network

HJ
Clinical Lead,
Ophthalmology

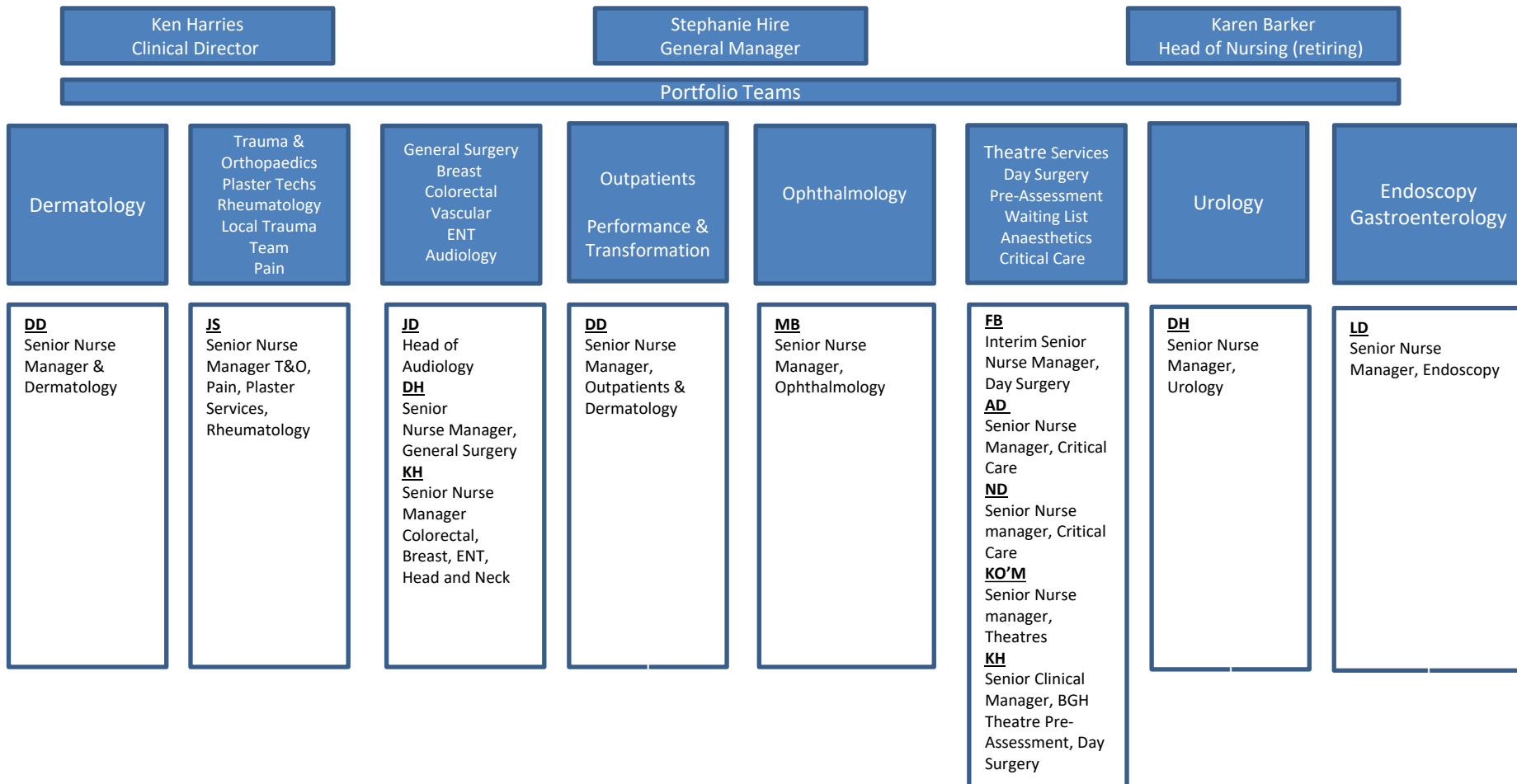
SG (GGH/PPH)
Clinical Lead
Anaesthetics
JZ (BGH)
Clinical Lead
Anaesthetics
MM (HB wide)
Clinical Lead
Critical Care

NgKS
Clinical Lead,
Urology

DB
Clinical Lead
Gastroenterology
and Endoscopy
FA
Clinical Lead
Endoscopy

Scheduled Care

Scheduled Care Directorate Organizational Chart



Scheduled Care

Scheduled Care Directorate Organisational Chart

Ken Harries
Clinical Director

Stephanie Hire
General Manager

Alex Walsby
Head of Nursing

Portfolio Teams

Directorate
Office

Trauma &
Orthopaedics
Plaster Techs
Rheumatology
Local Trauma
Team
Pain

General Surgery
Breast
Colorectal
Vascular
ENT
Audiology

Outpatients
Performance &
Transformation

Ophthalmology
Dermatology
Neurology

Theatre Services
Day Surgery
Pre-Assessment
Waiting List
Anaesthetics
Critical Care

Urology

Endoscopy
Gastroenterology

CR
Digital
Governance and
Risk Project
Manager
HT
Business
Manager
AW
PA to Senior
Management

CH
Trauma Lead
Manager
AD
Lead Plaster
Technician
LG
Service Manager,
T&O
LR
Service Manager,
Rheumatology
Pain

DL
Service Manager,
General Surgery
& Colorectal
LW
Service Manager,
ENT

WP
Service Manager,
Outpatients
JP
Validation
Manager
BJ
Digital Pathways
Design Manager,
Outpatients

AS
Senior Manager
Ophthalmology
CP
Service Manager,
Dermatology
DG
Projects Service
Manager,
Ophthalmology

DJ
Service Manager,
Theatres
JP
Service Manager,
Theatres
SC
Service Manager,
Critical Care

AR
Service Manager
Urology

VC
Service Manager,
Endoscopy

JN
PA to DK, LD, AJ,
SH
RDS
PA to NG, CL & SE
SE
PA to Senior
Management

EH
Service Support
Manager,
Rheumatology &
Pain
SM
Service Support
Manager, T&O

SJ
Service Support
Manager,
General Surgery,
Colorectal,
Breast
DP
Service Support
Manager (ENT)

AR
Project Support
Officer, OPD
Transformation
CR
Project Support
Officer,
Performance &
Transformation

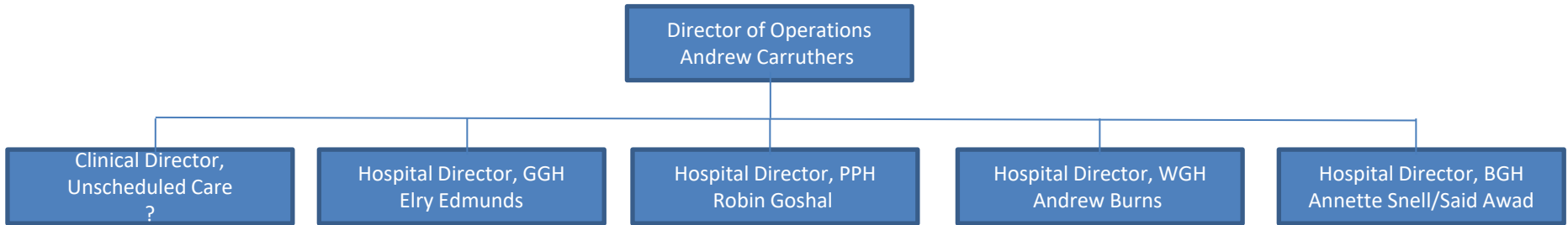
LK
Service Support
Manager,
Ophthalmology
HS
Service Support
Manager,
Dermatology
TP
Service Support
Manager,
Neurology

VACANCY
Service Support
Manager,
Theatres

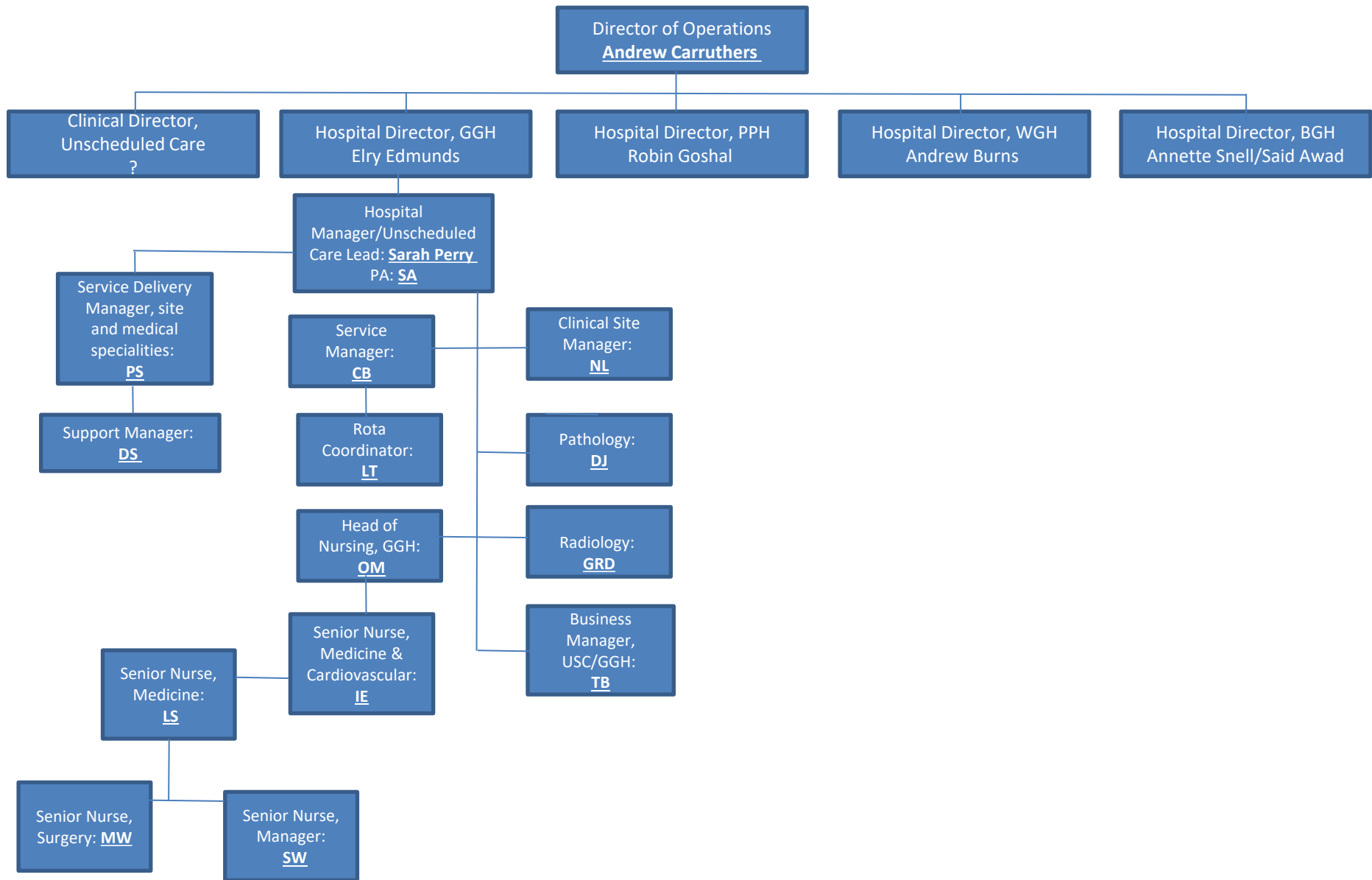
LL
Service Support
Manager,
Urology

LB
Service Support
Manager,
Endoscopy &
Gastroenterology

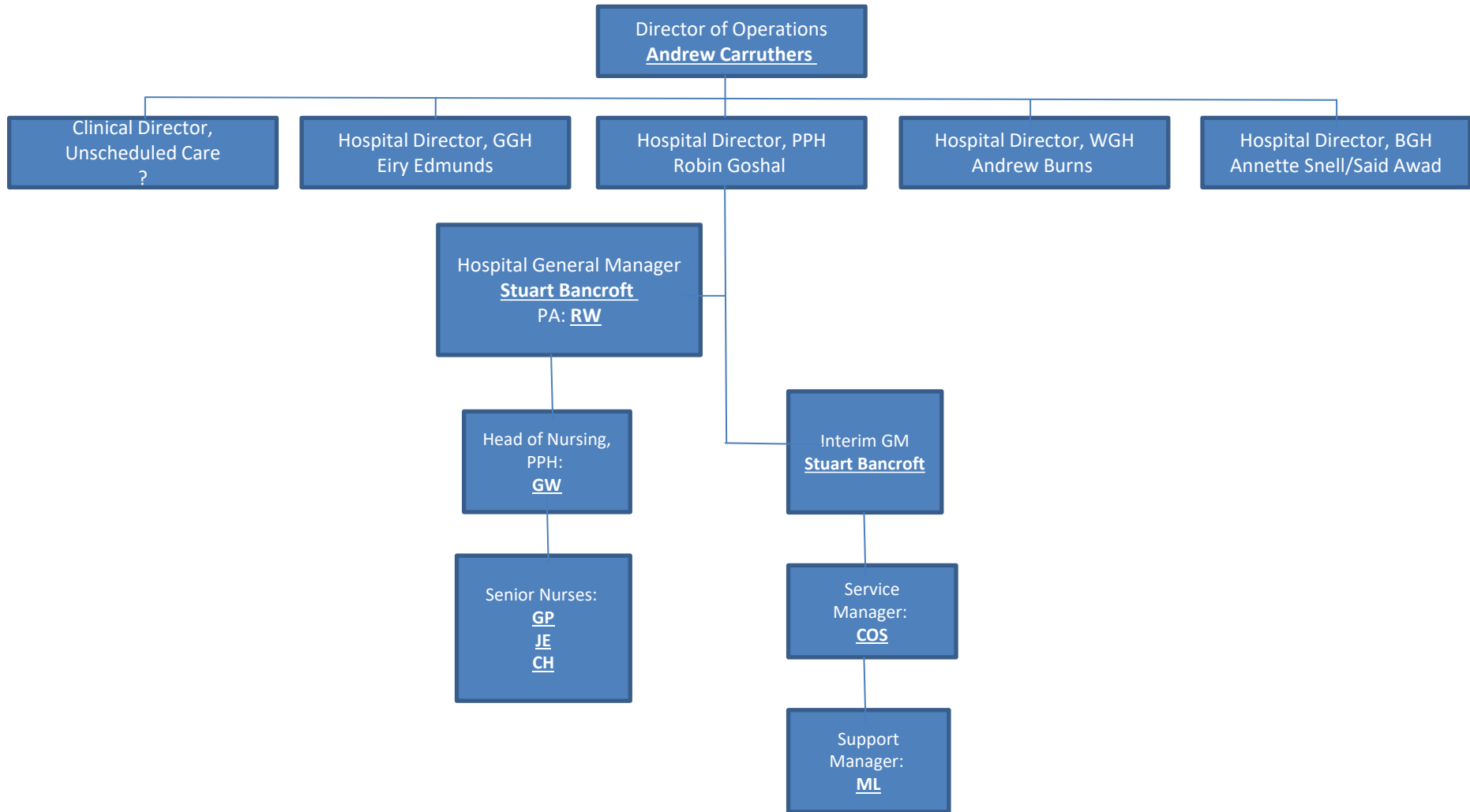
Unscheduled Care & Site Teams



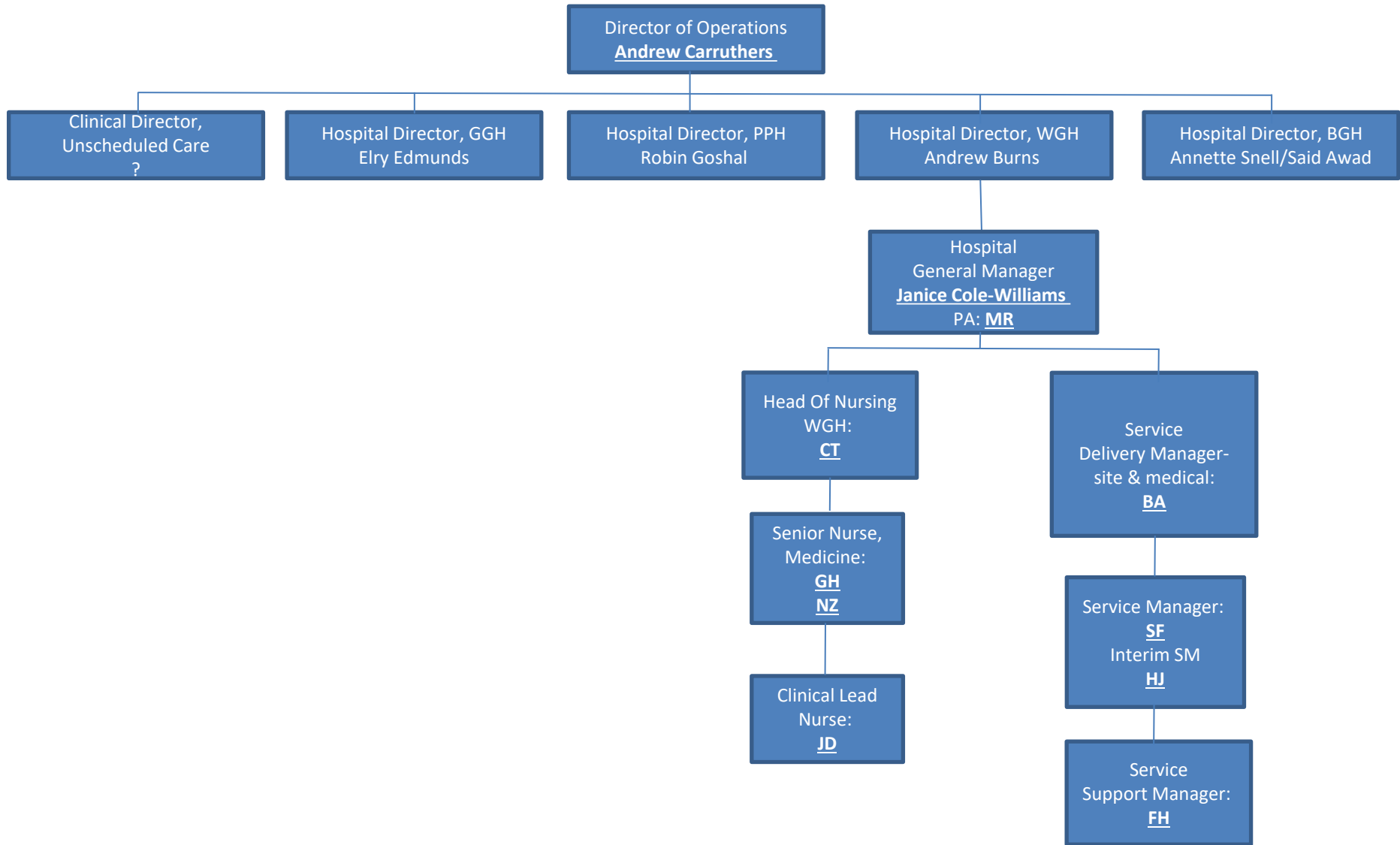
Unscheduled Care & Site Teams - GGH



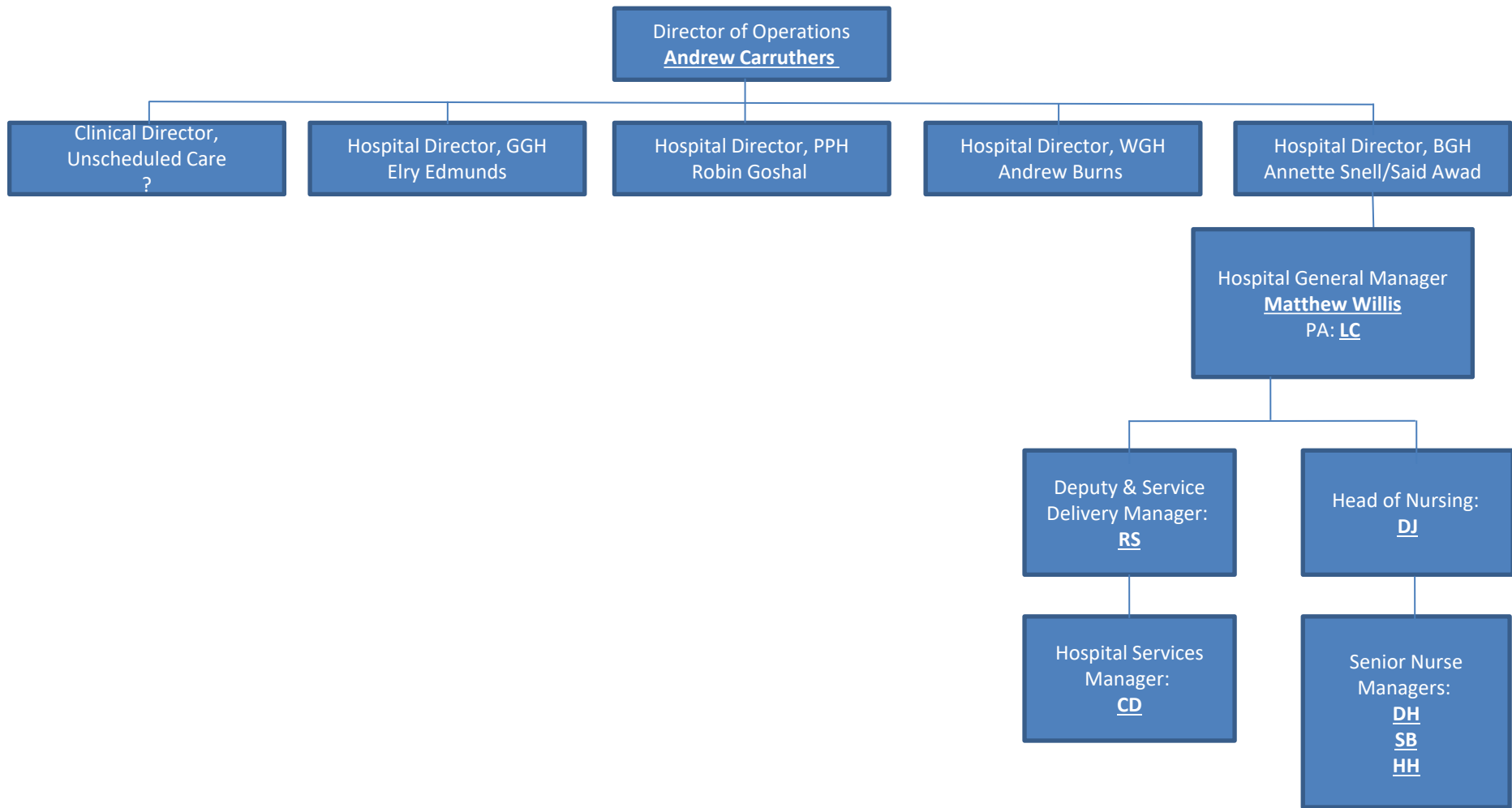
Unscheduled Care & Site Teams - PPH



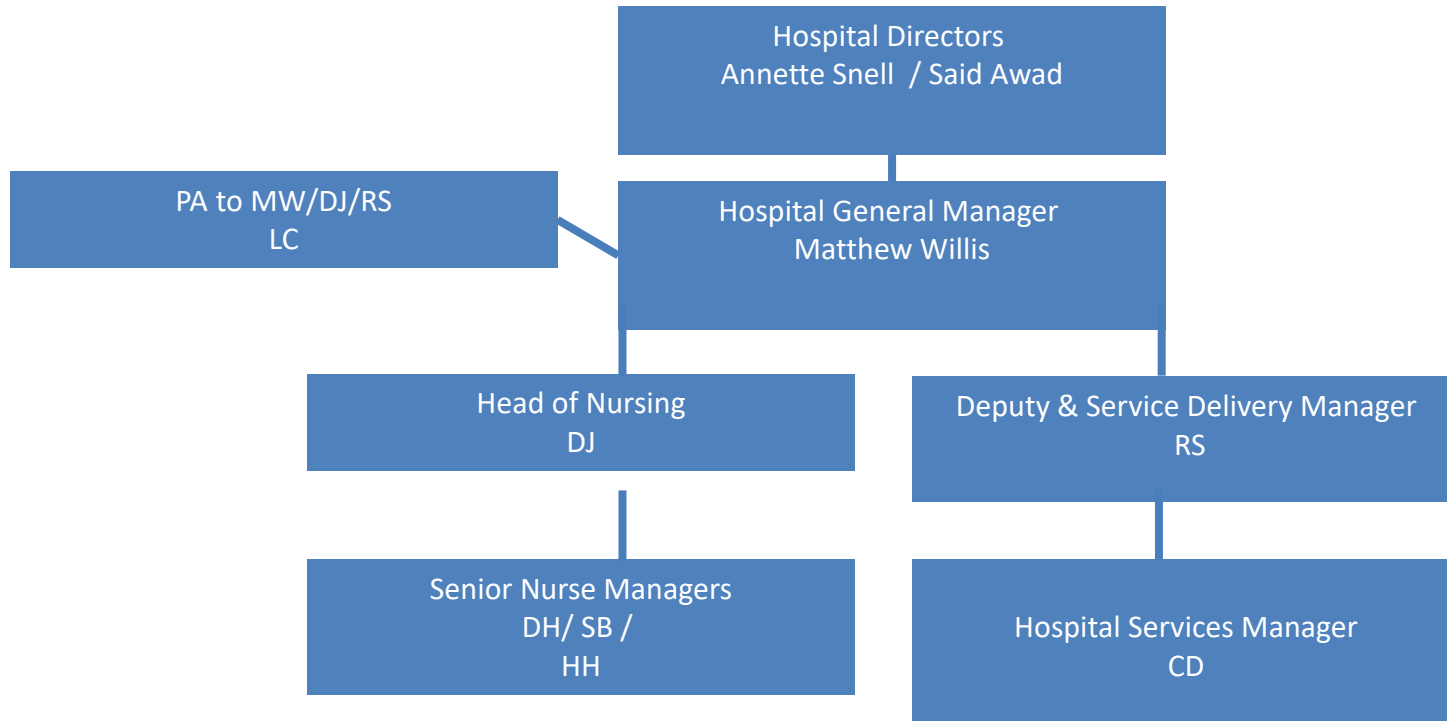
Unscheduled Care & Site Teams - WGH



Unscheduled Care & Site Teams - BGH

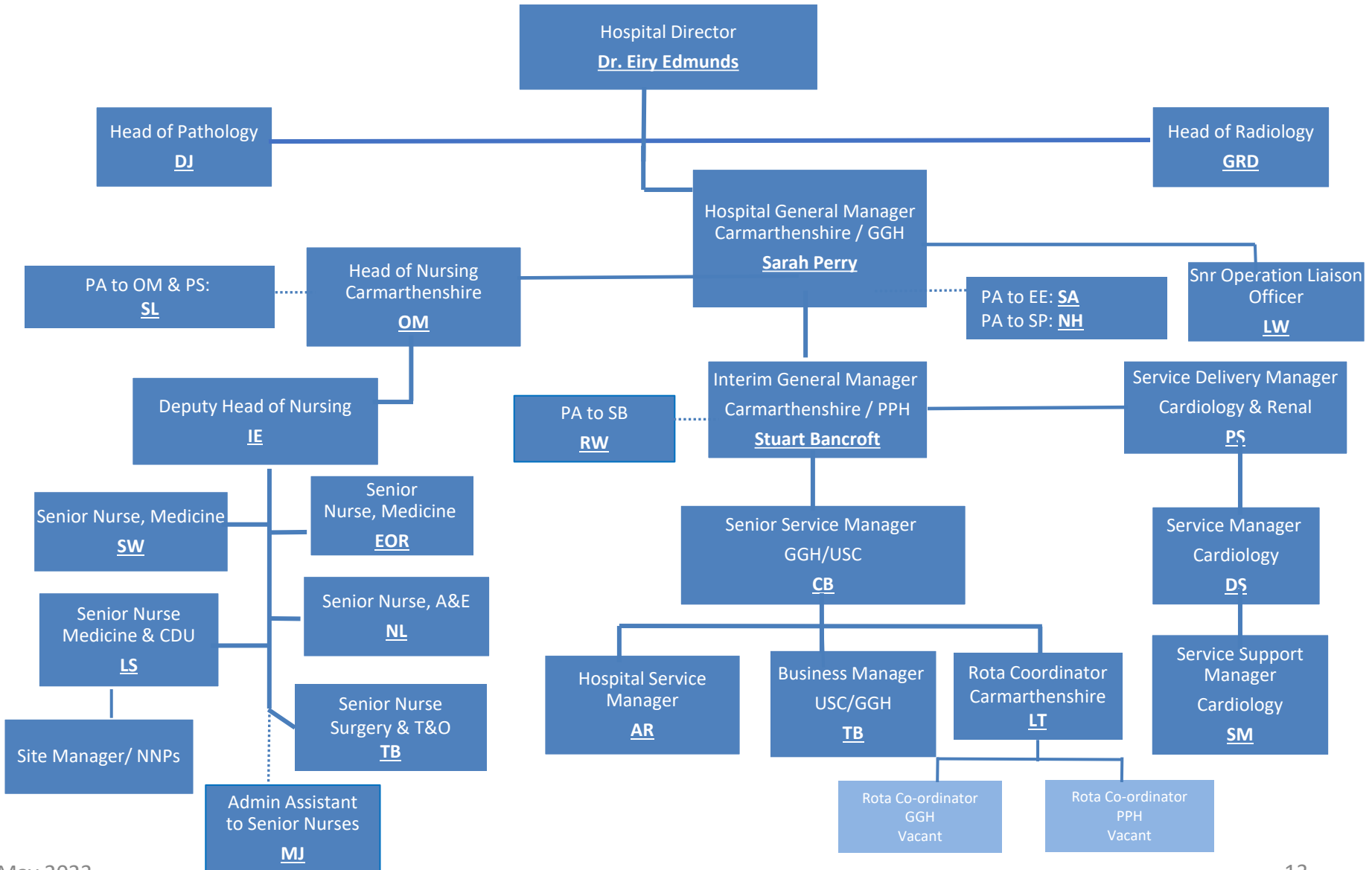


Unscheduled Care Bronglais General Hospital Triumvirate Management Team



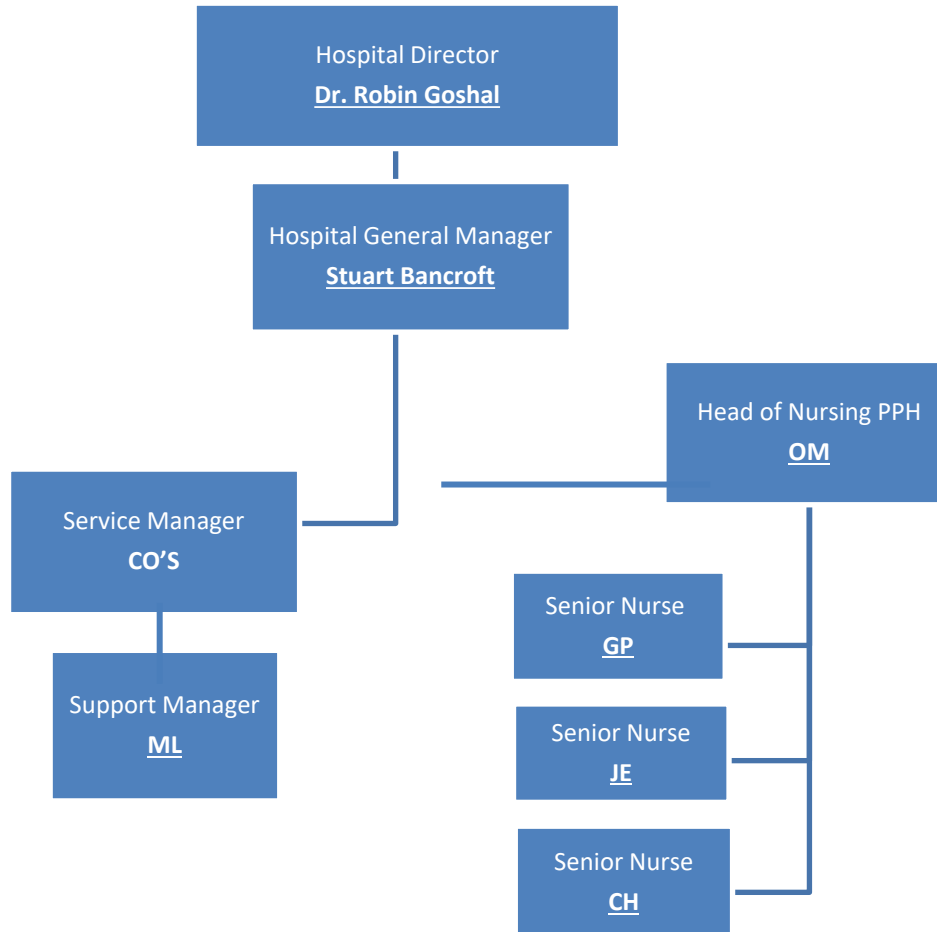
Unscheduled Care

Glangwili General Hospital Triumvirate Management Team

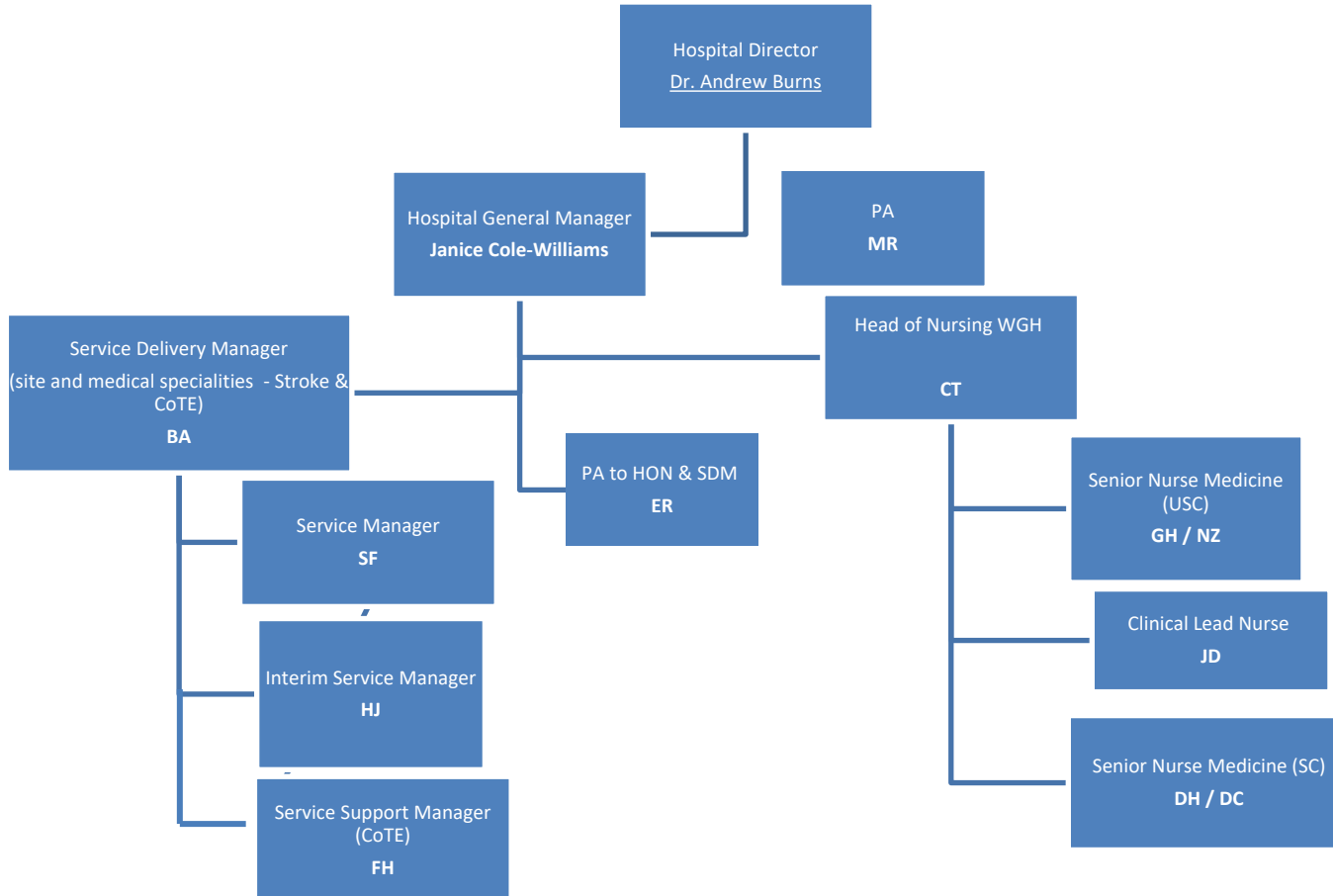


Unscheduled Care

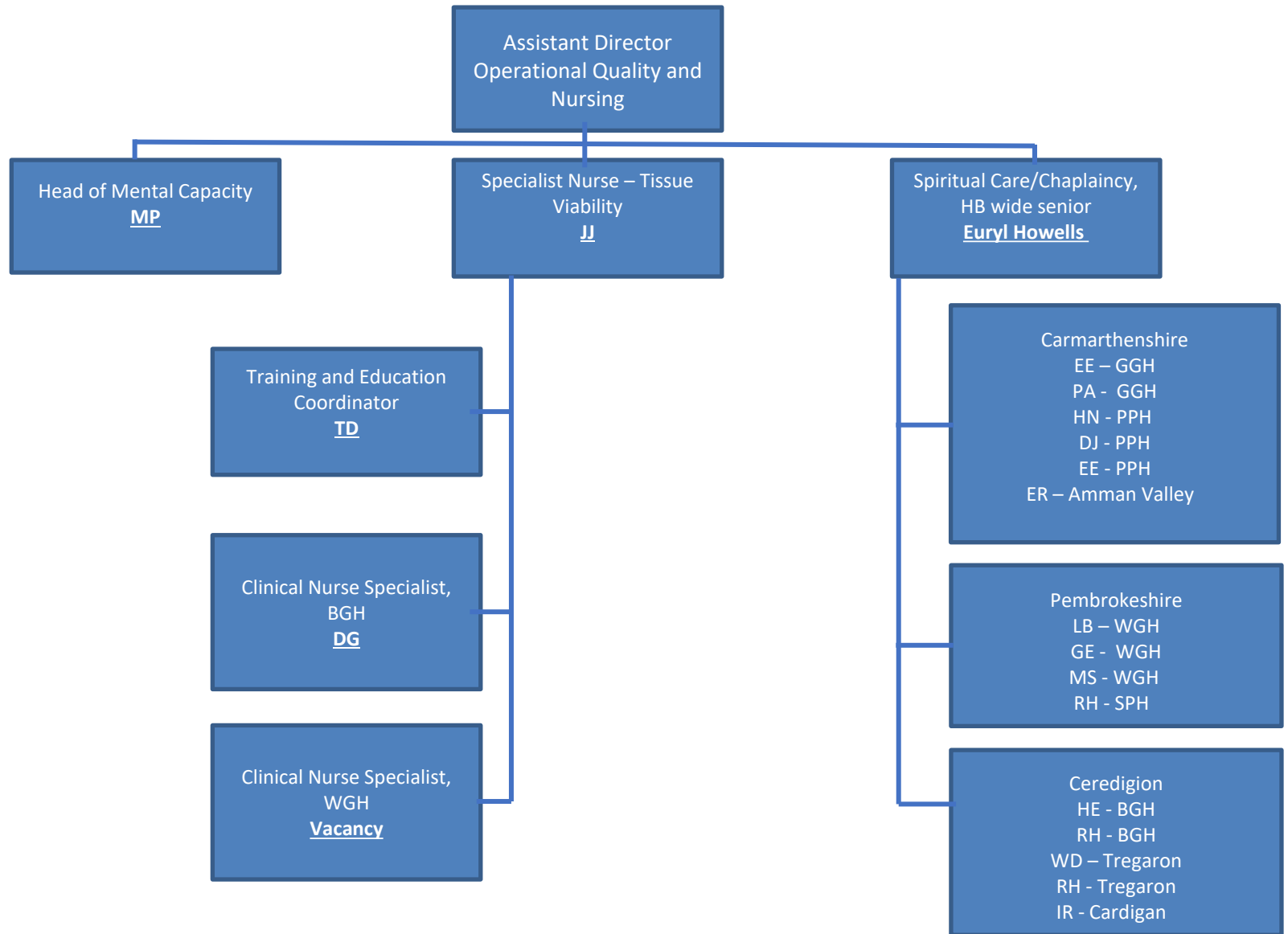
Prince Philip Hospital Triumvirate Management Team



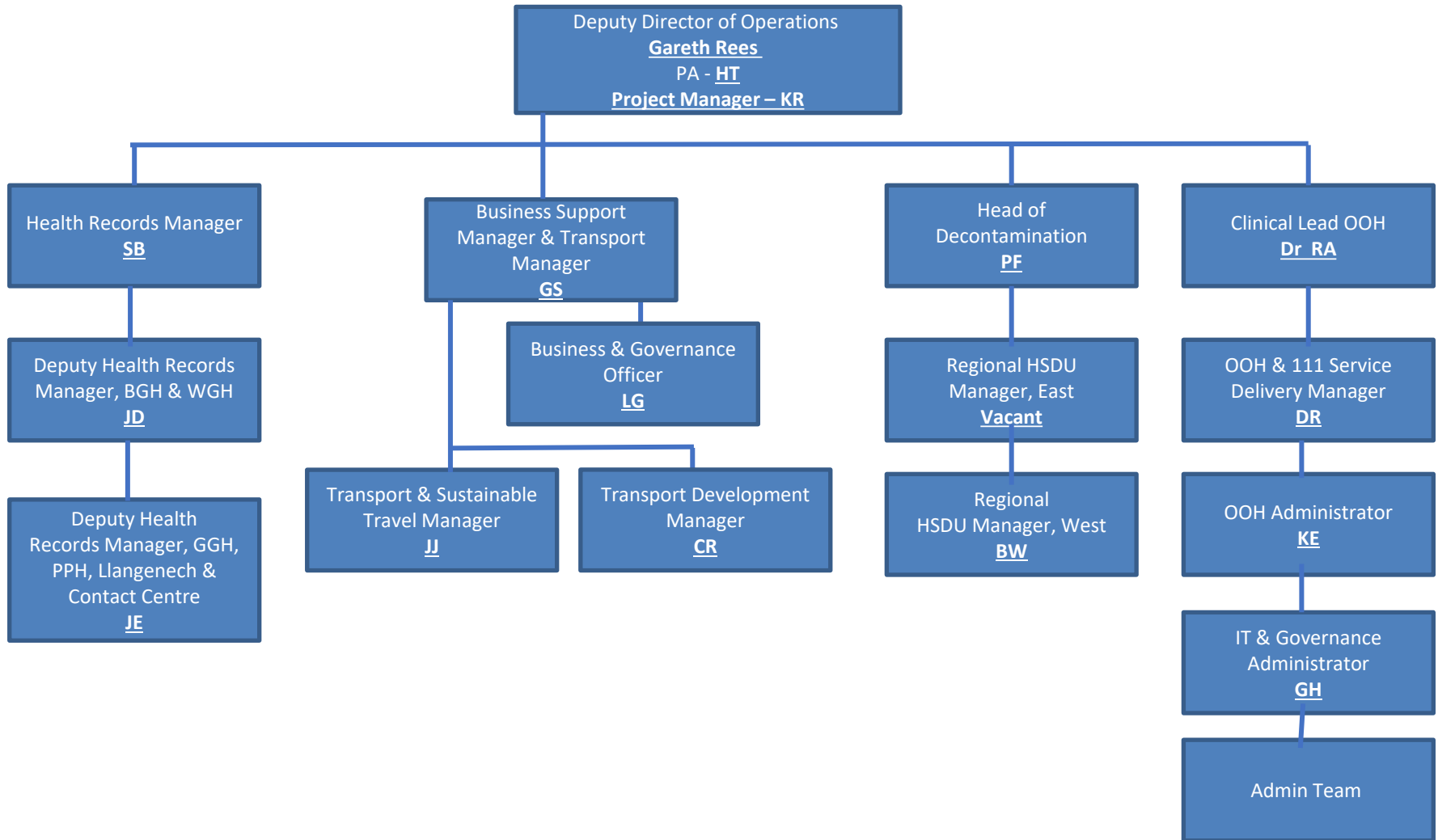
Unscheduled Care Withybush General Hospital Triumvirate Management Team



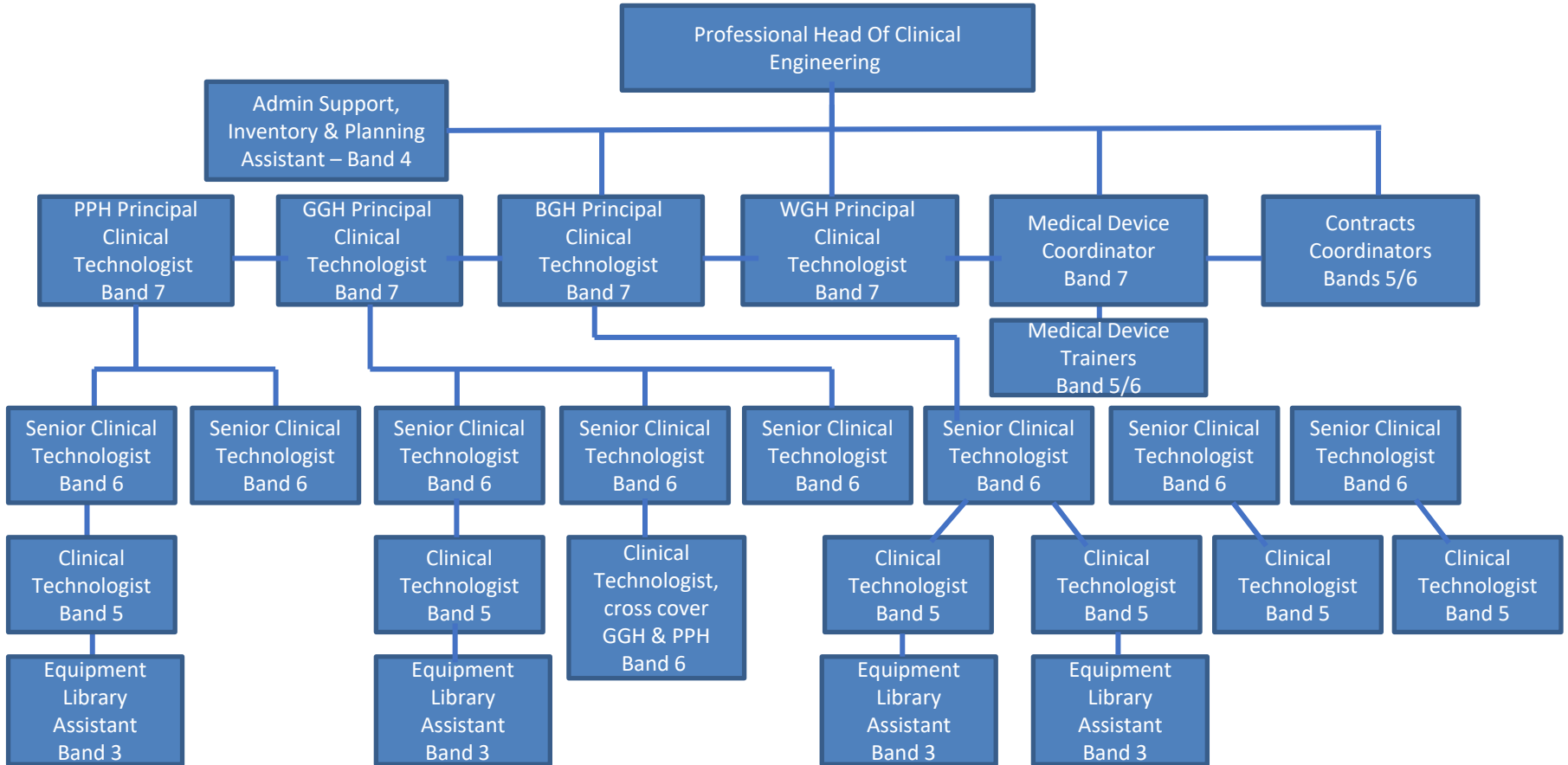
Nursing



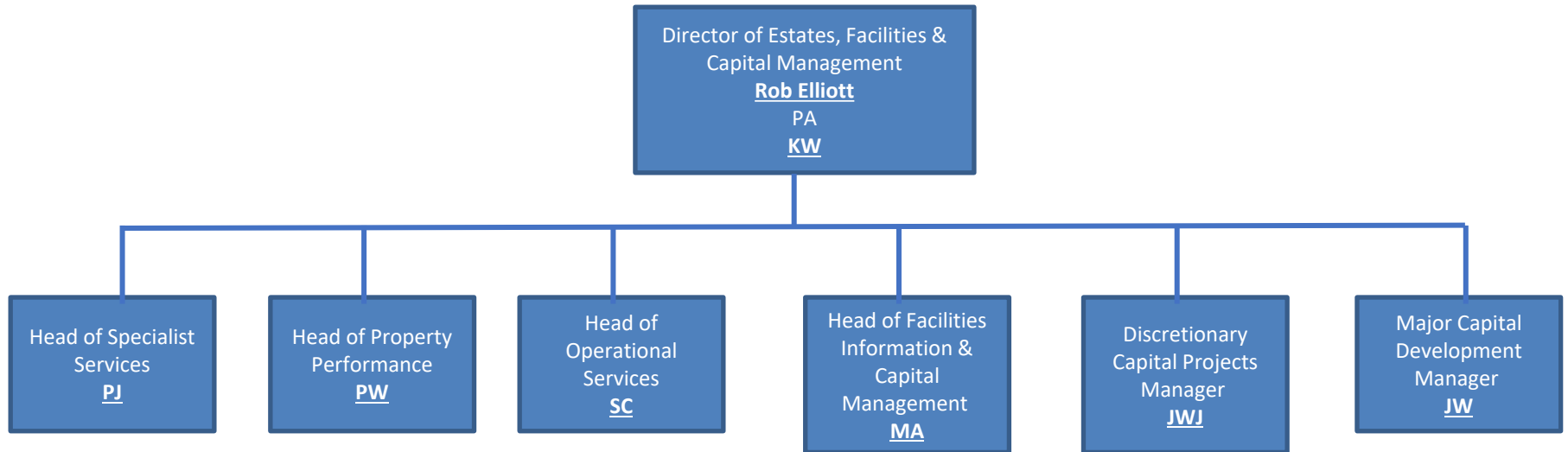
Business and Central Operations



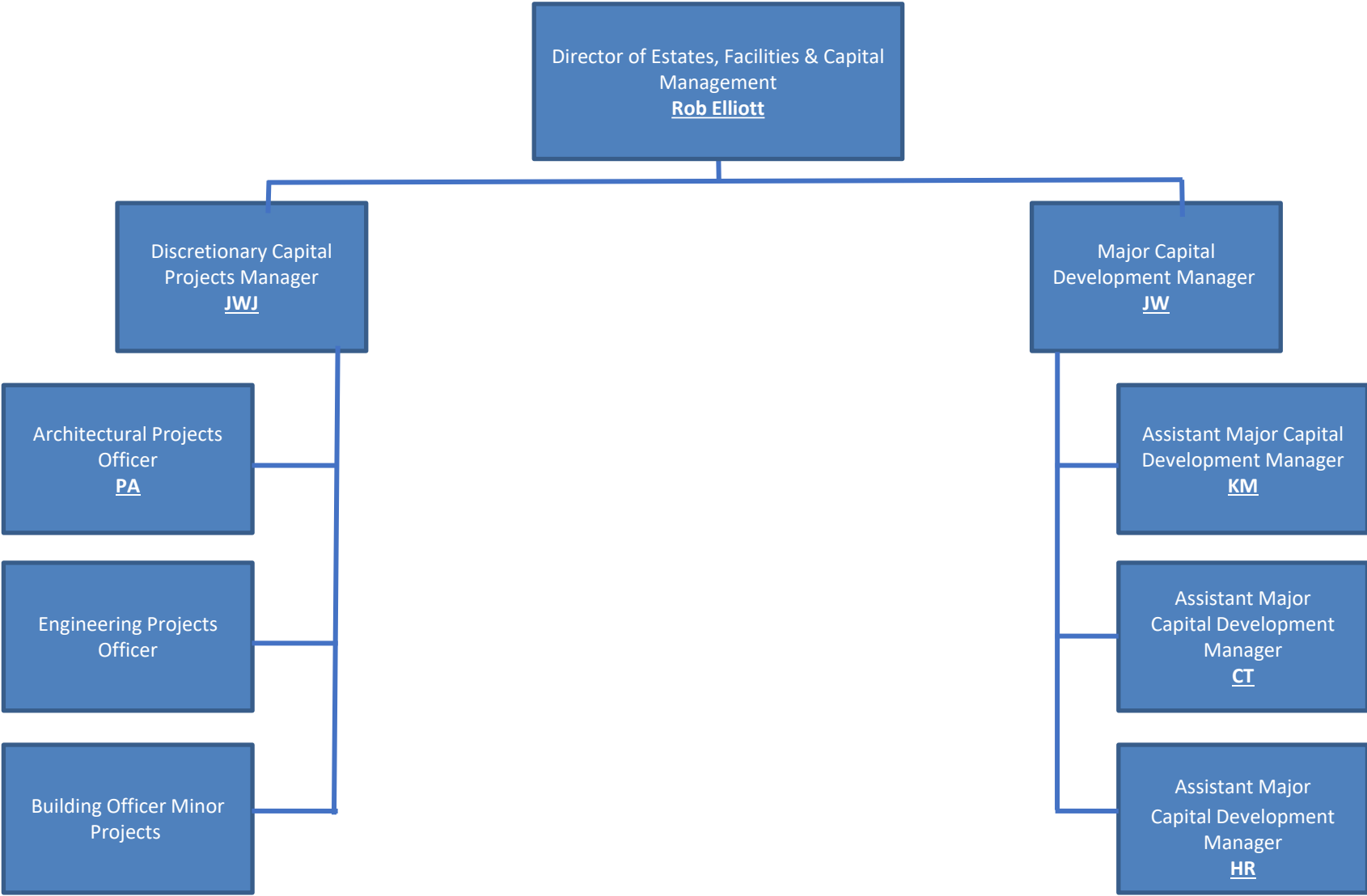
Clinical Engineering



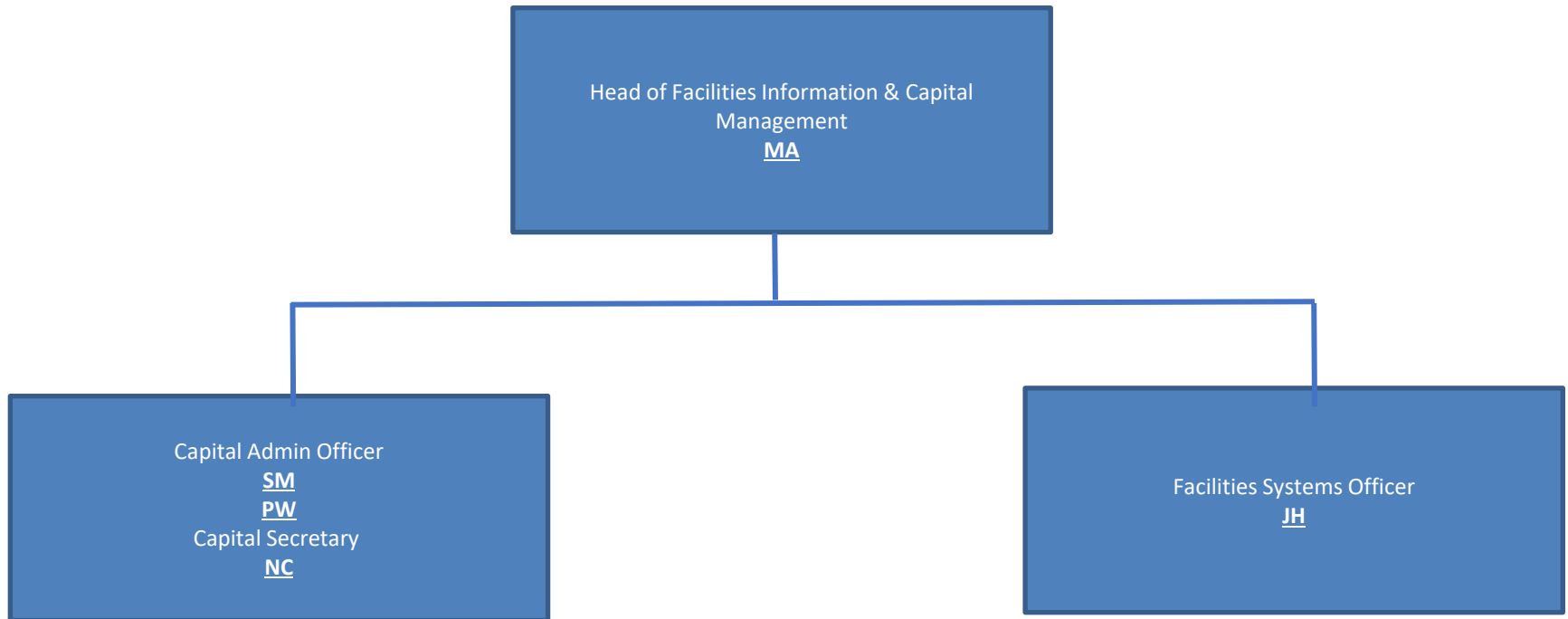
Estates and Facilities and Capital Management Team (1/7)



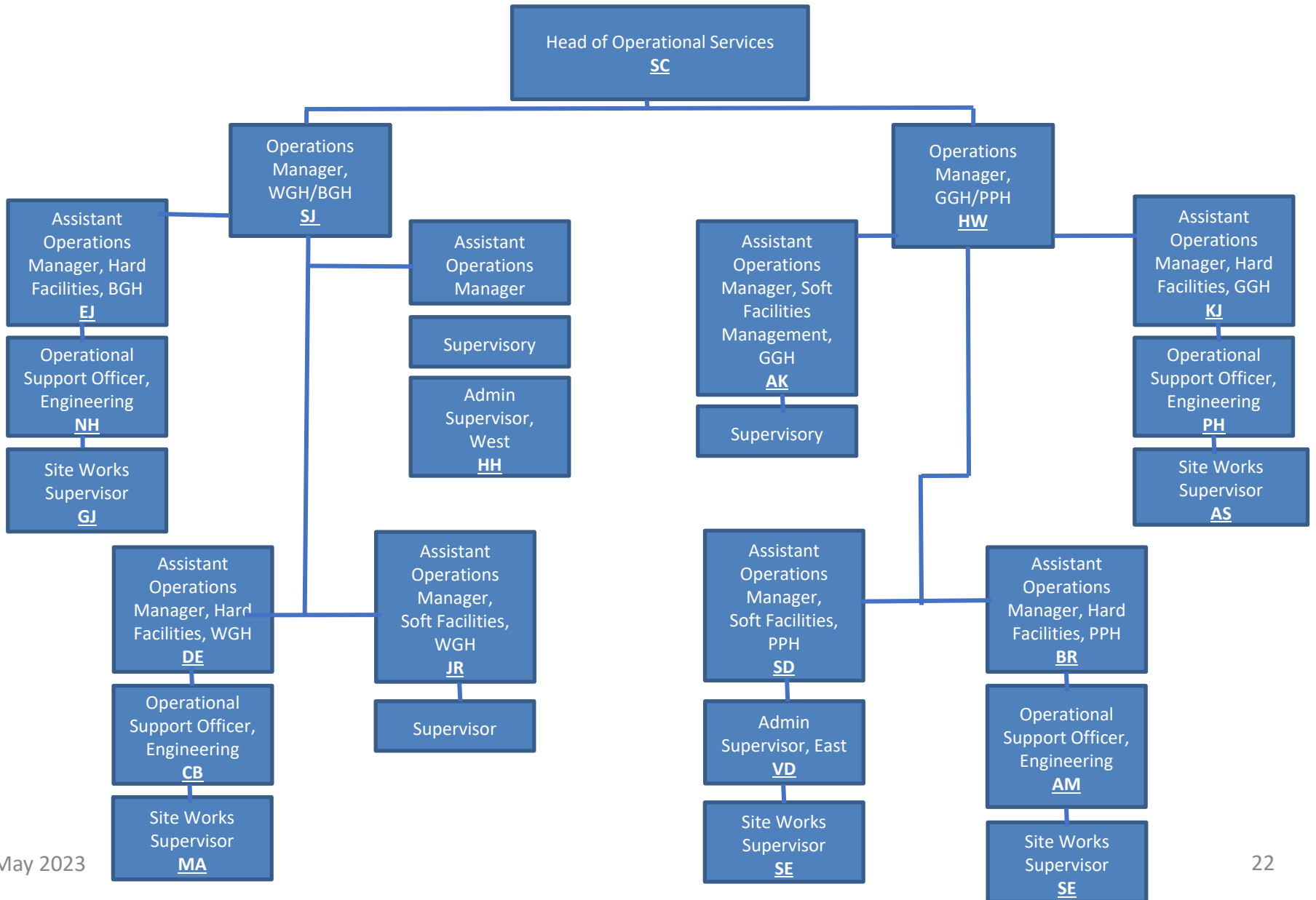
Facilities (2/8)- Capital Projects



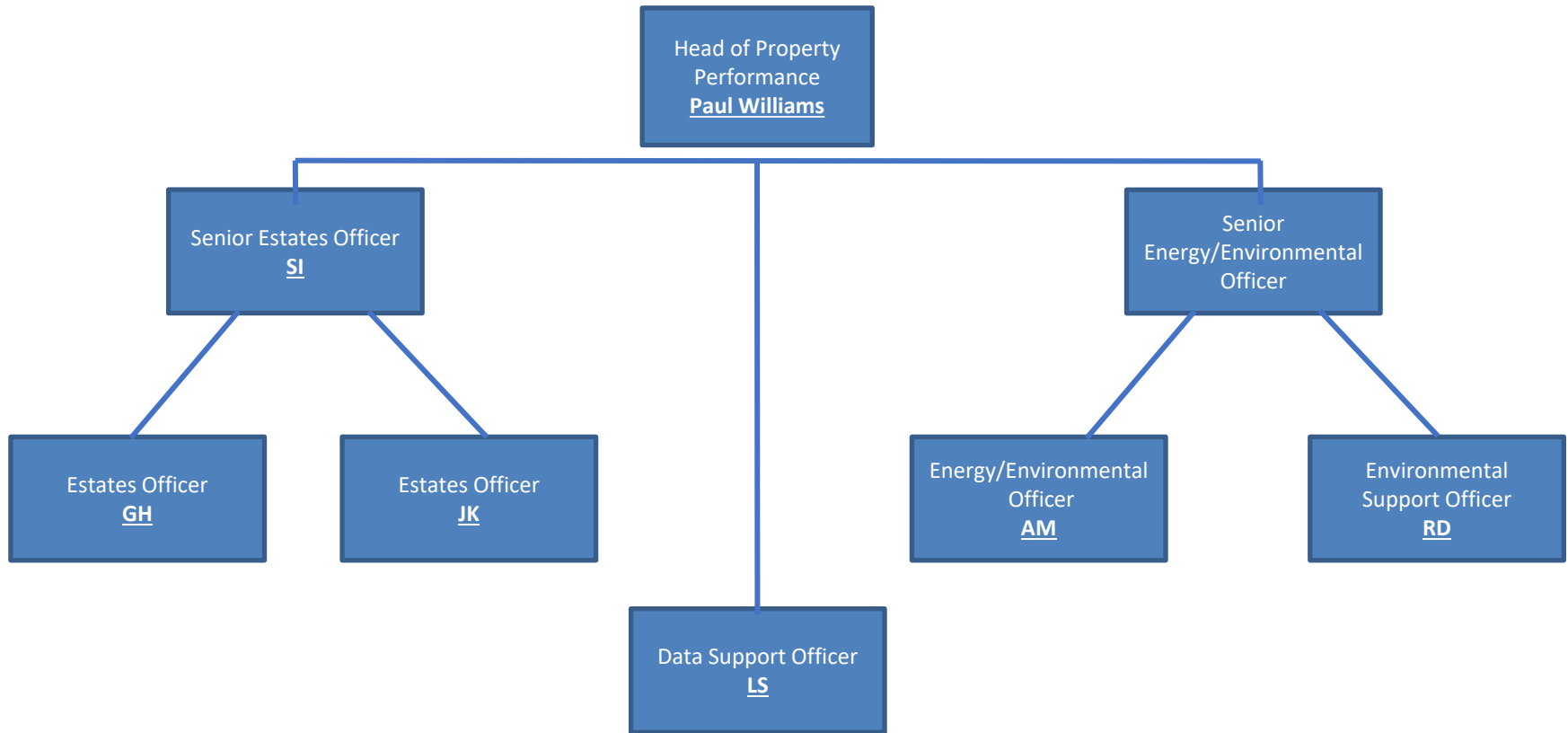
Facilities (3/8)- Facilities Information and Capital Management



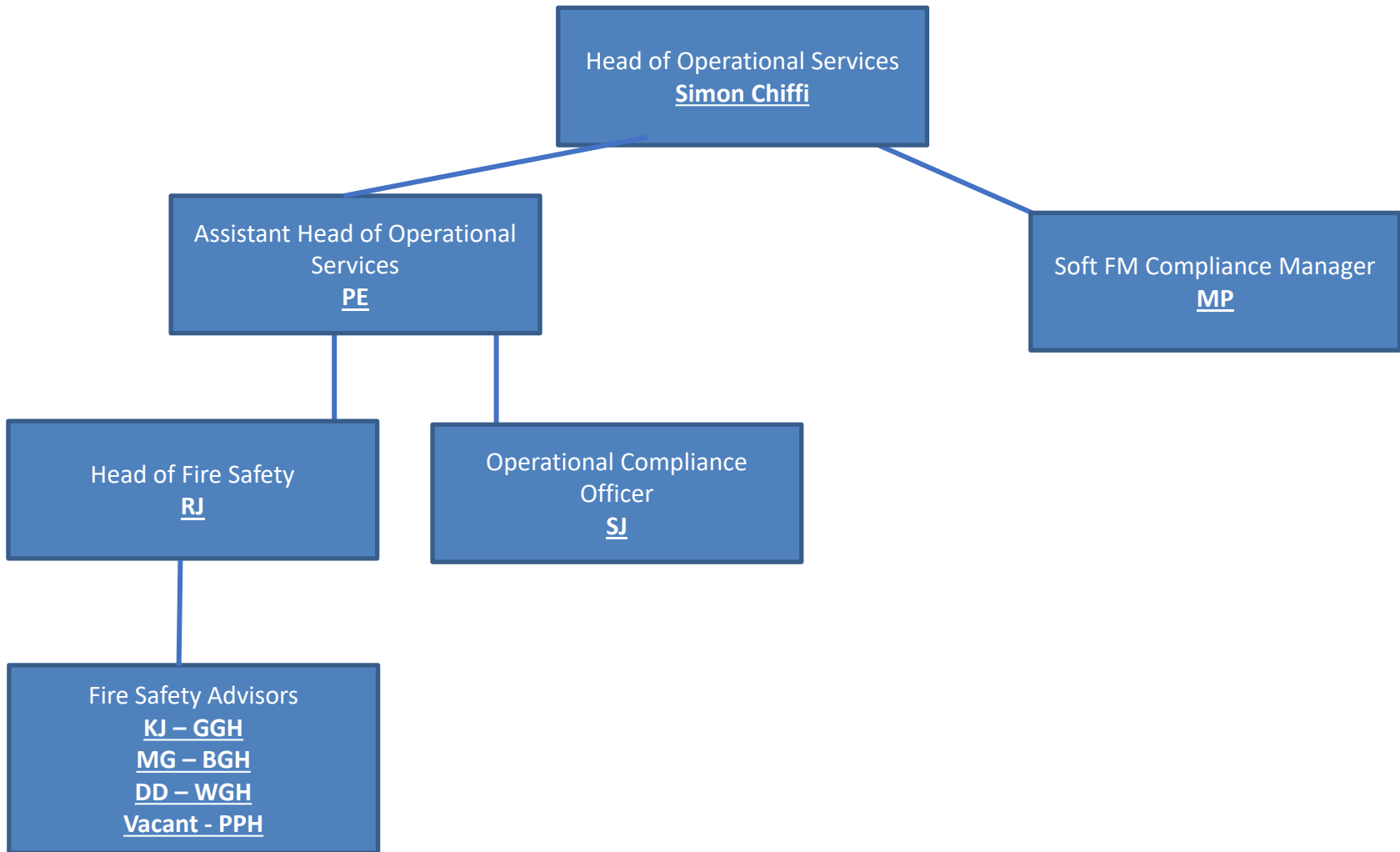
Facilities (4/8) Operational Services



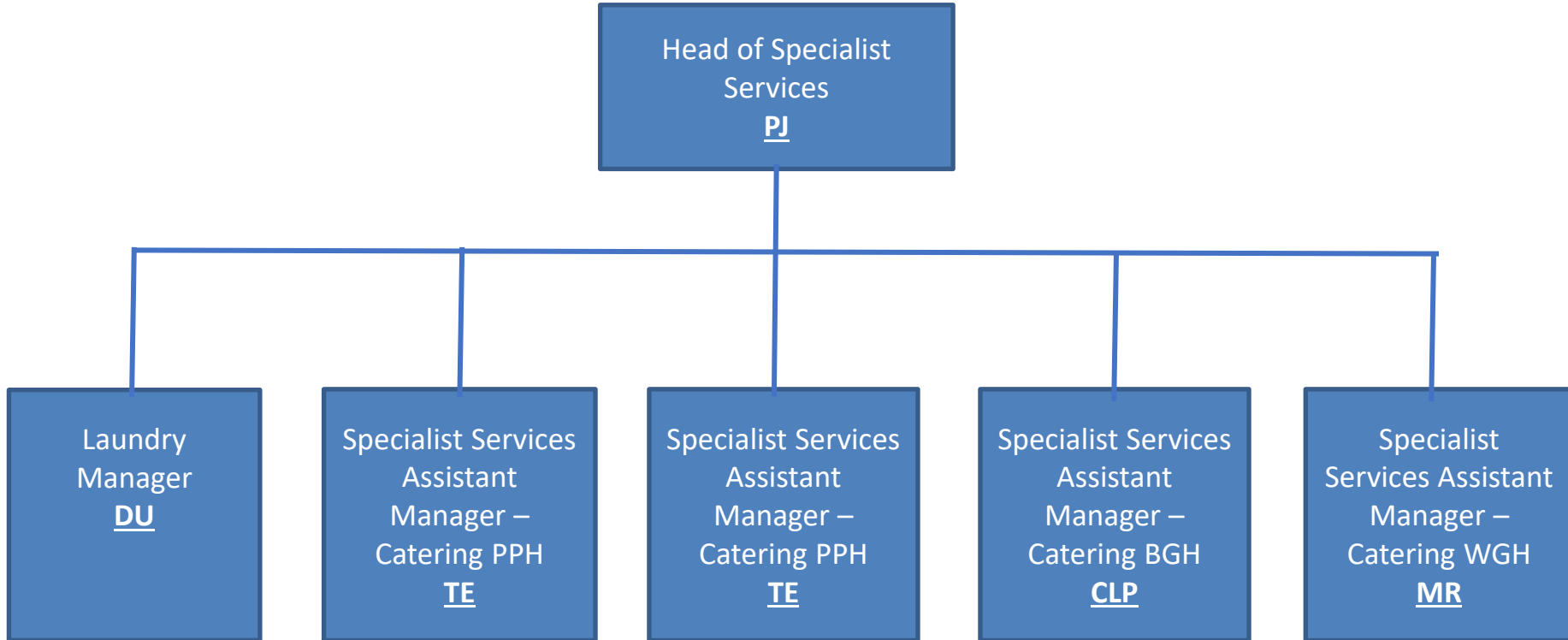
Facilities (5/8) - Property Performance



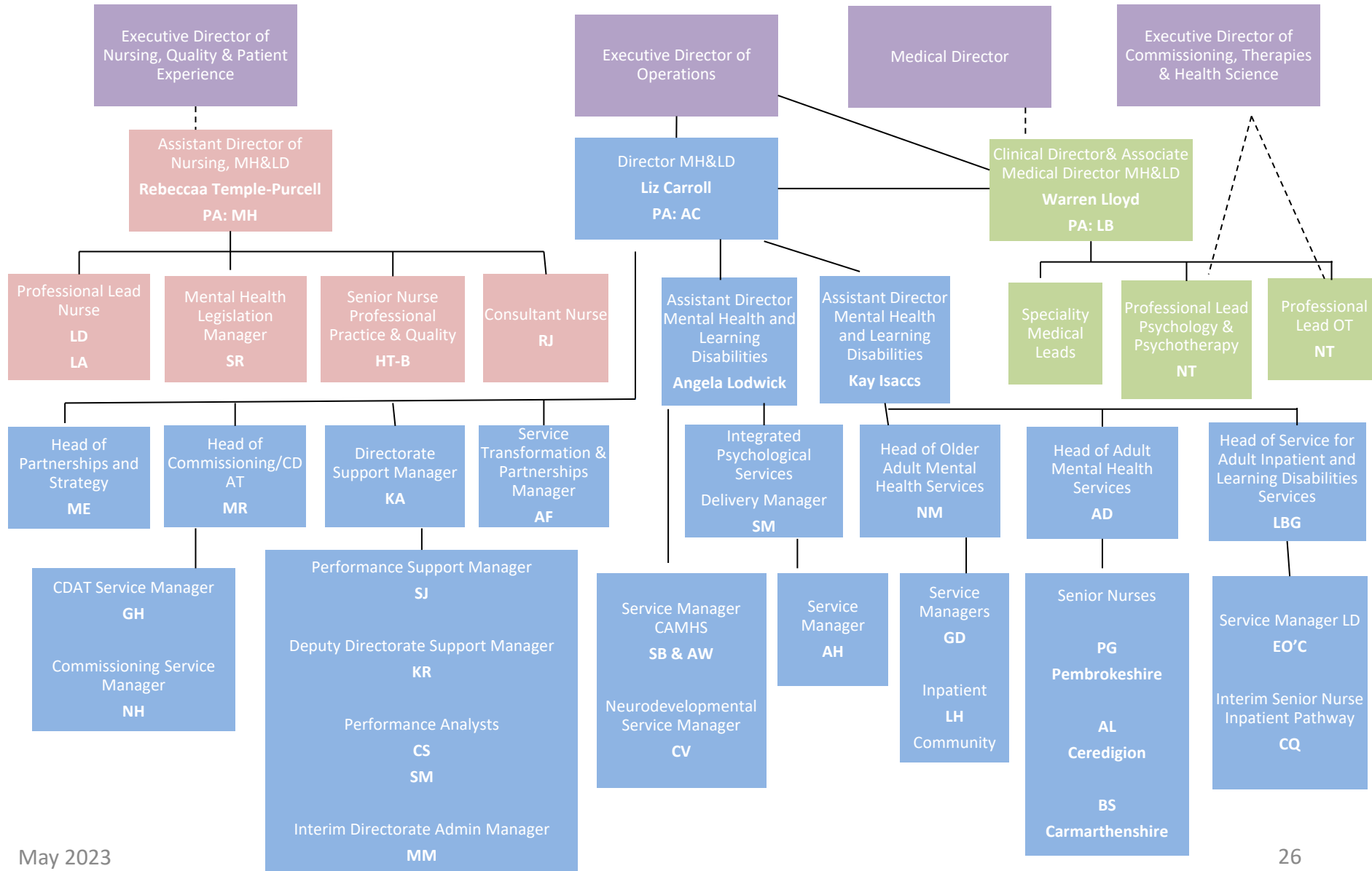
Facilities (6/8) - Operations Compliance



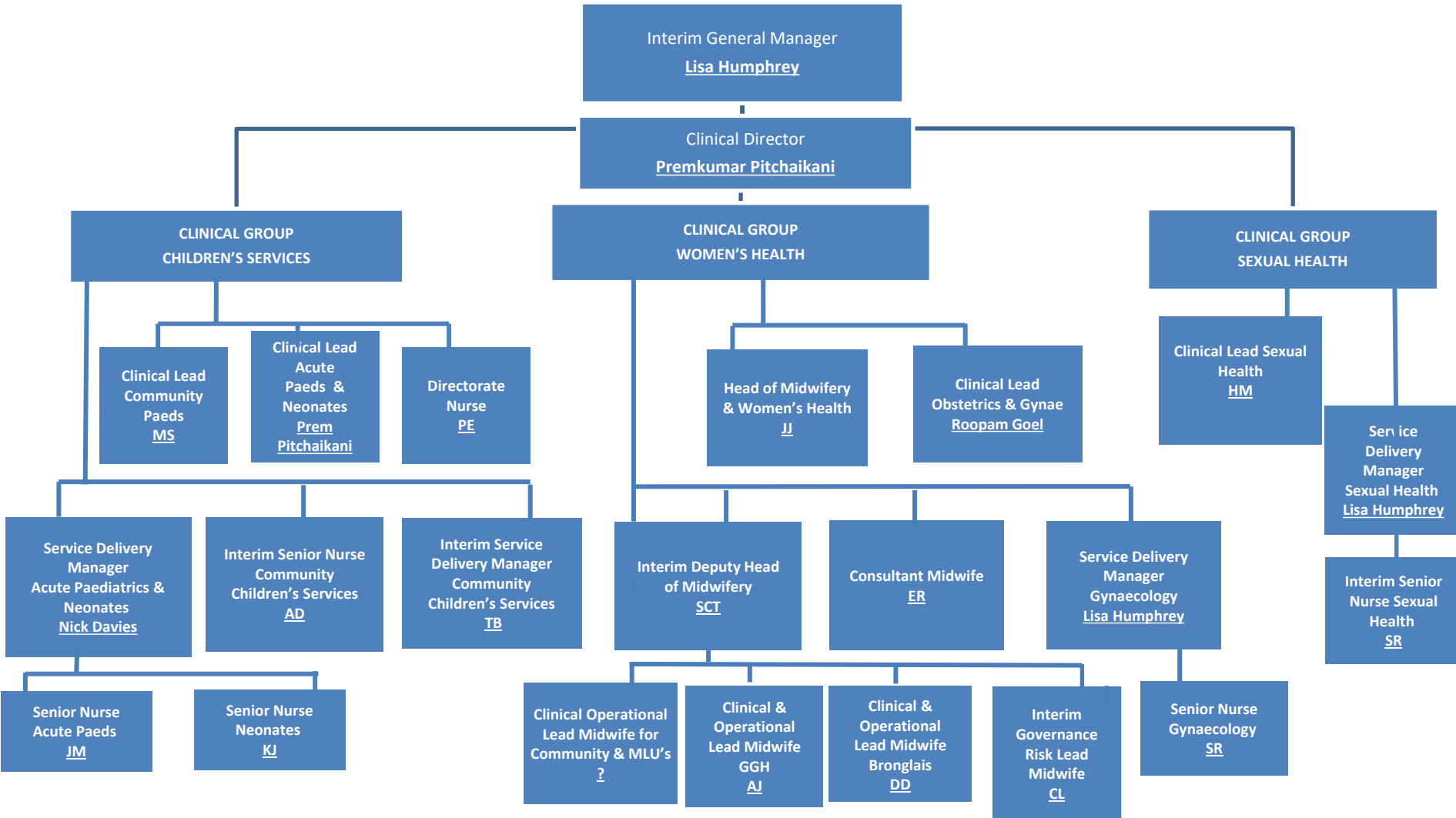
Facilities (7/8) – Specialist Services



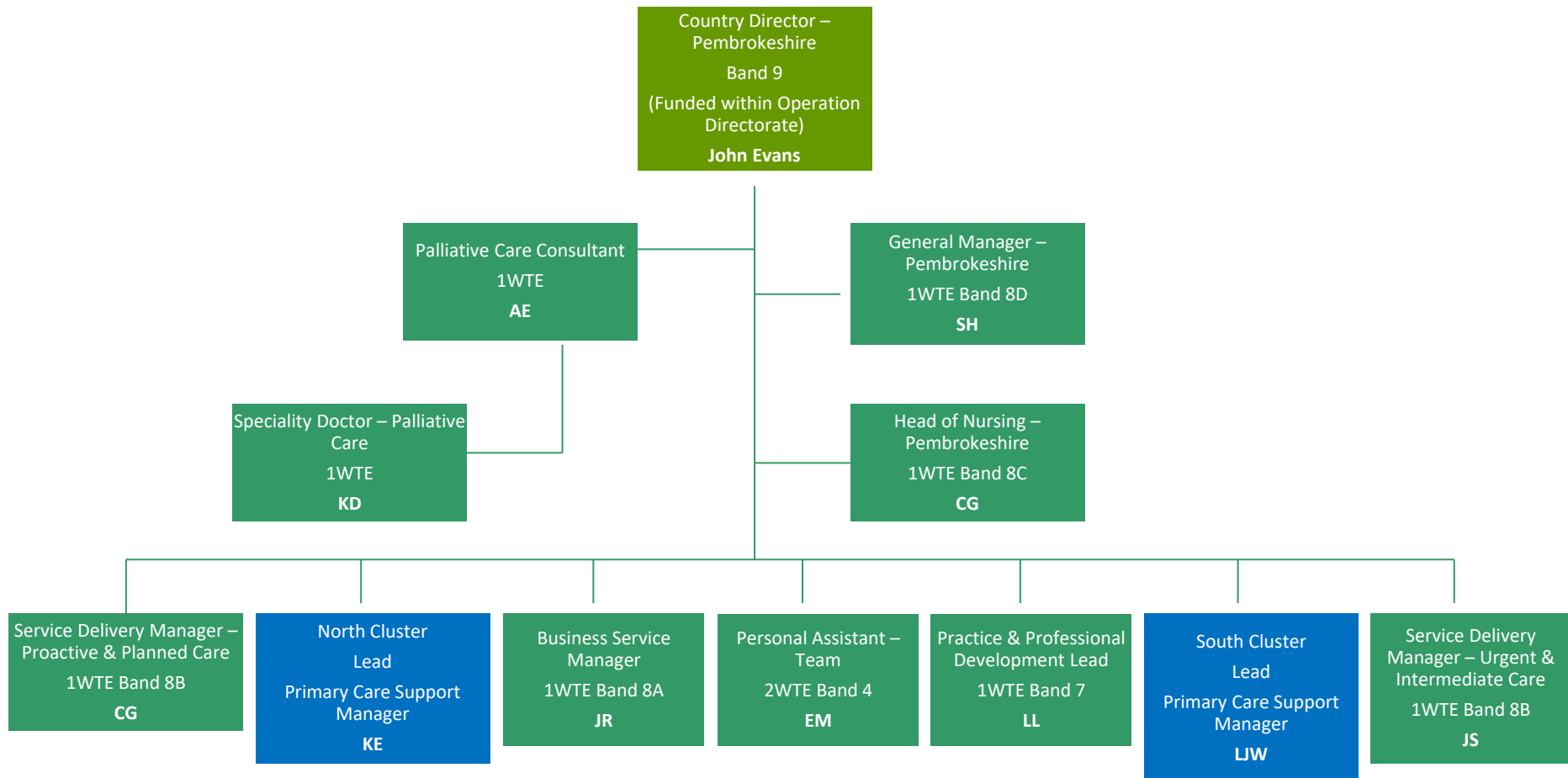
Mental Health and Learning Disabilities



Women and Children's Services



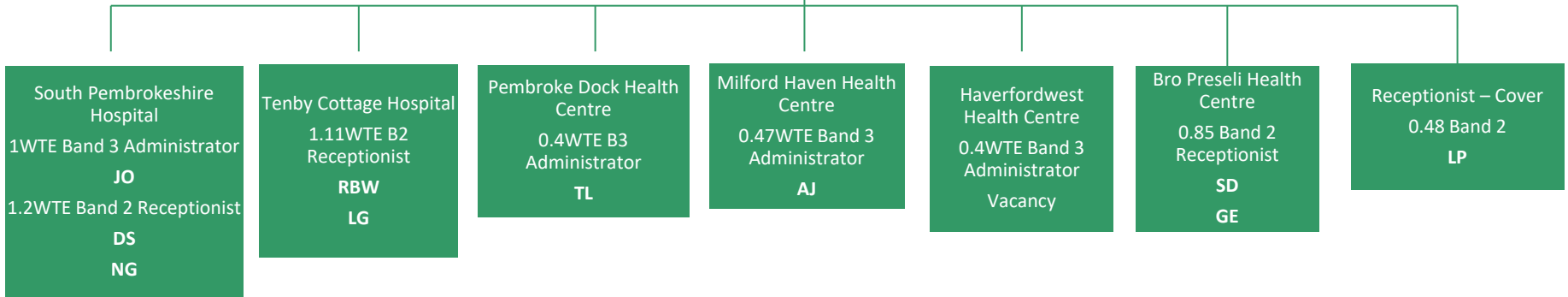
County Management Team



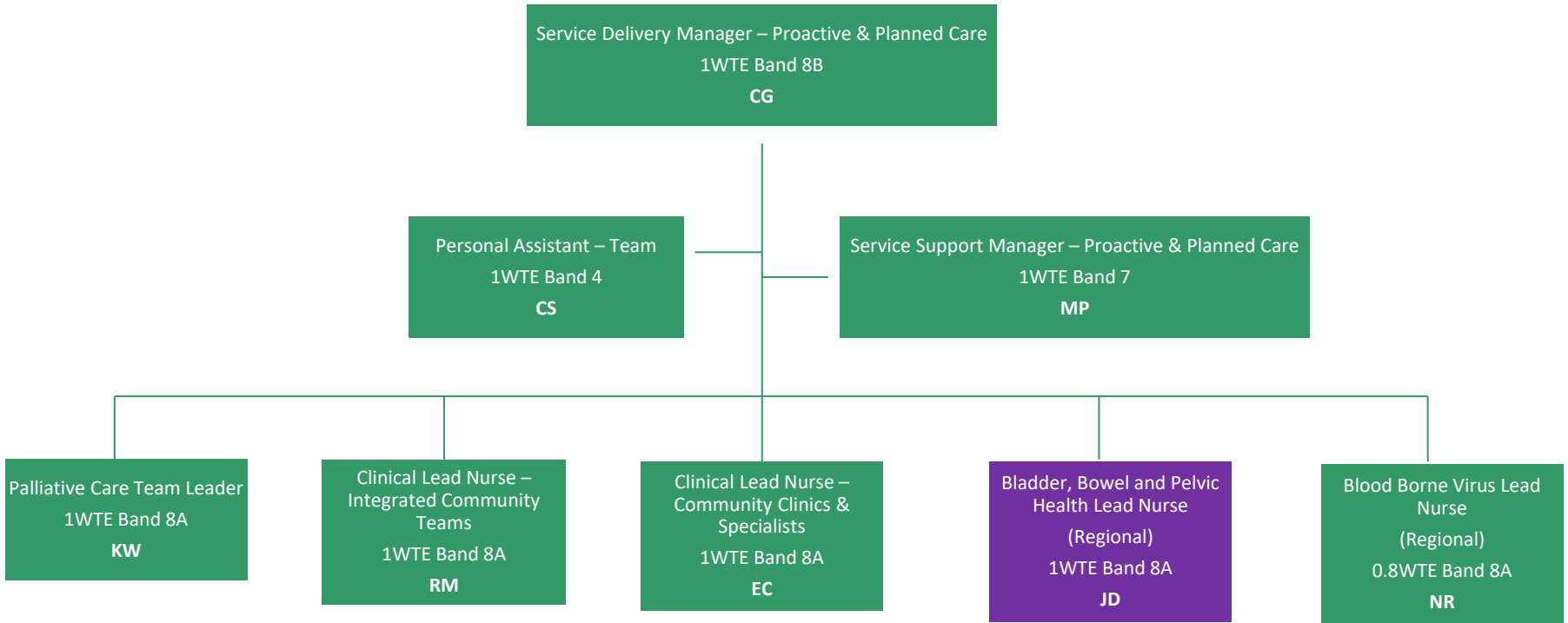
Business Service Team

Business Service
Manager
1WTE Band 8A
JR

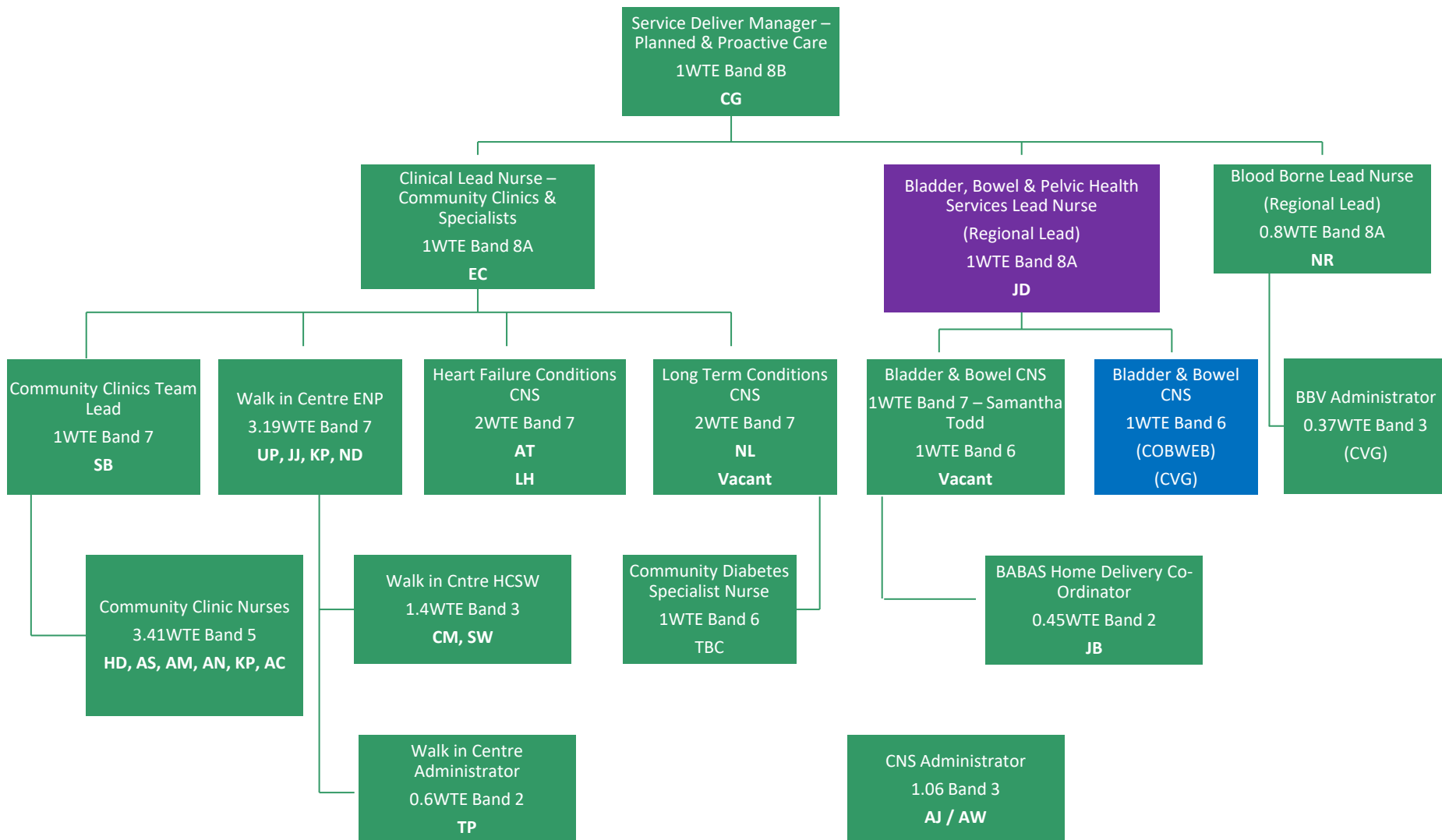
Business Service Officer
2WTE Band 5
SN
DP



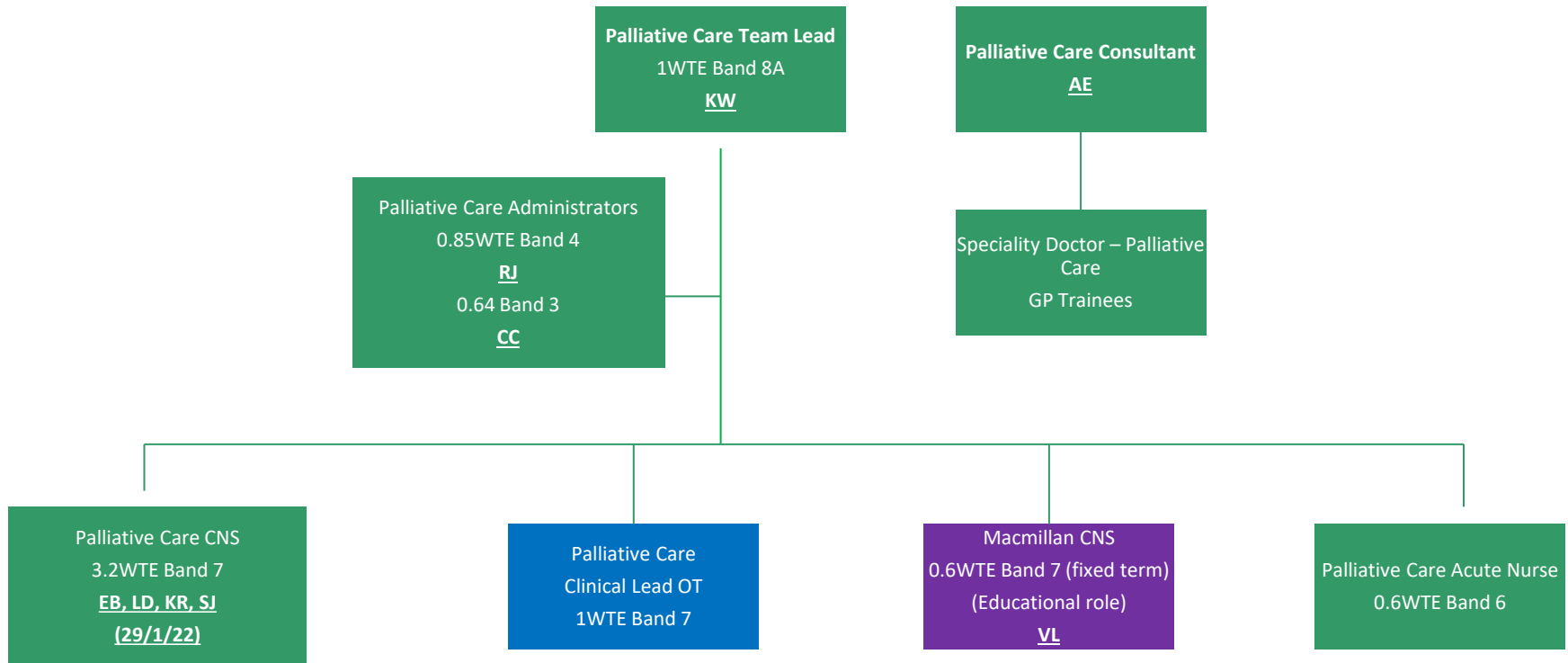
Proactive & Planned Care Team



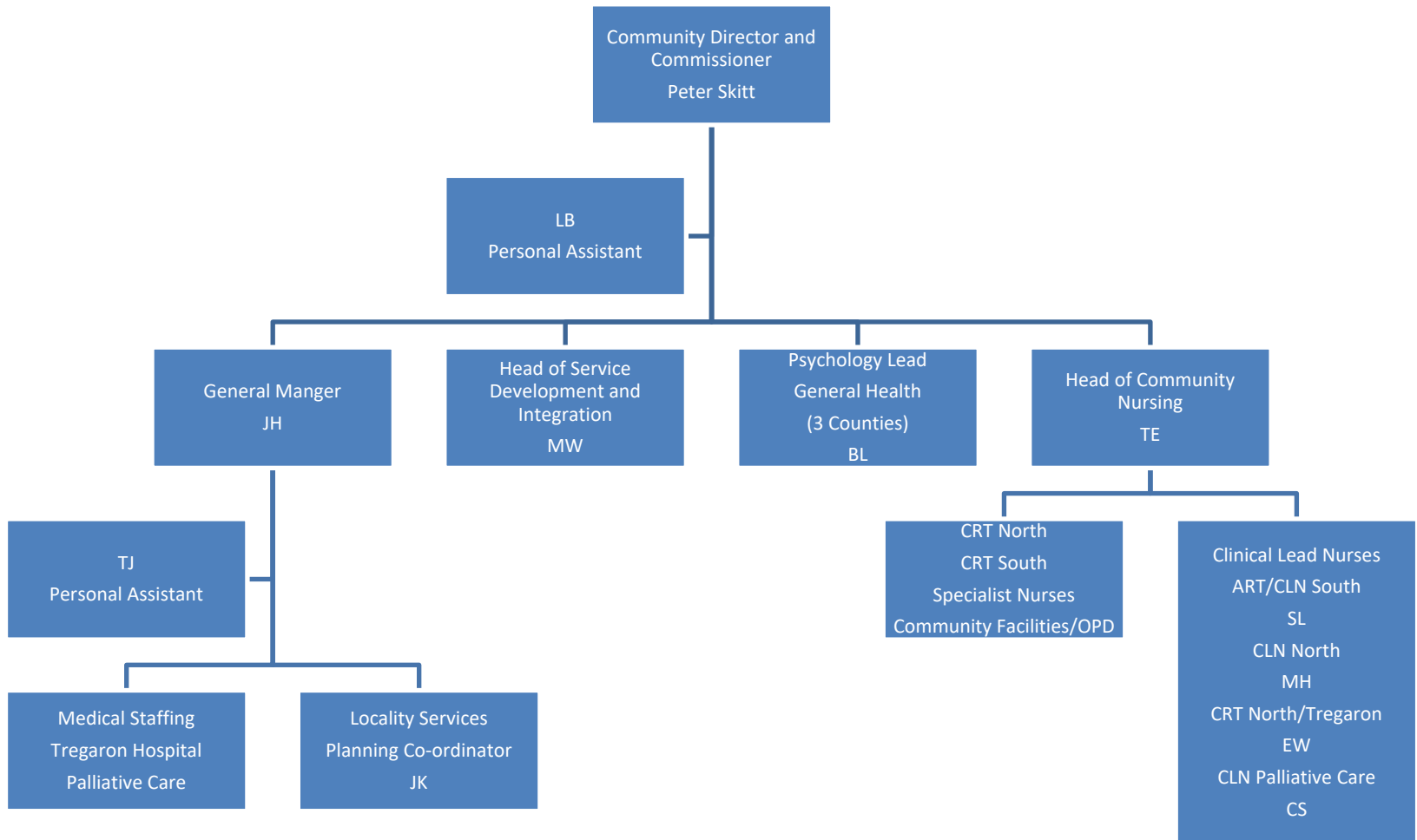
Planned and Proactive Care



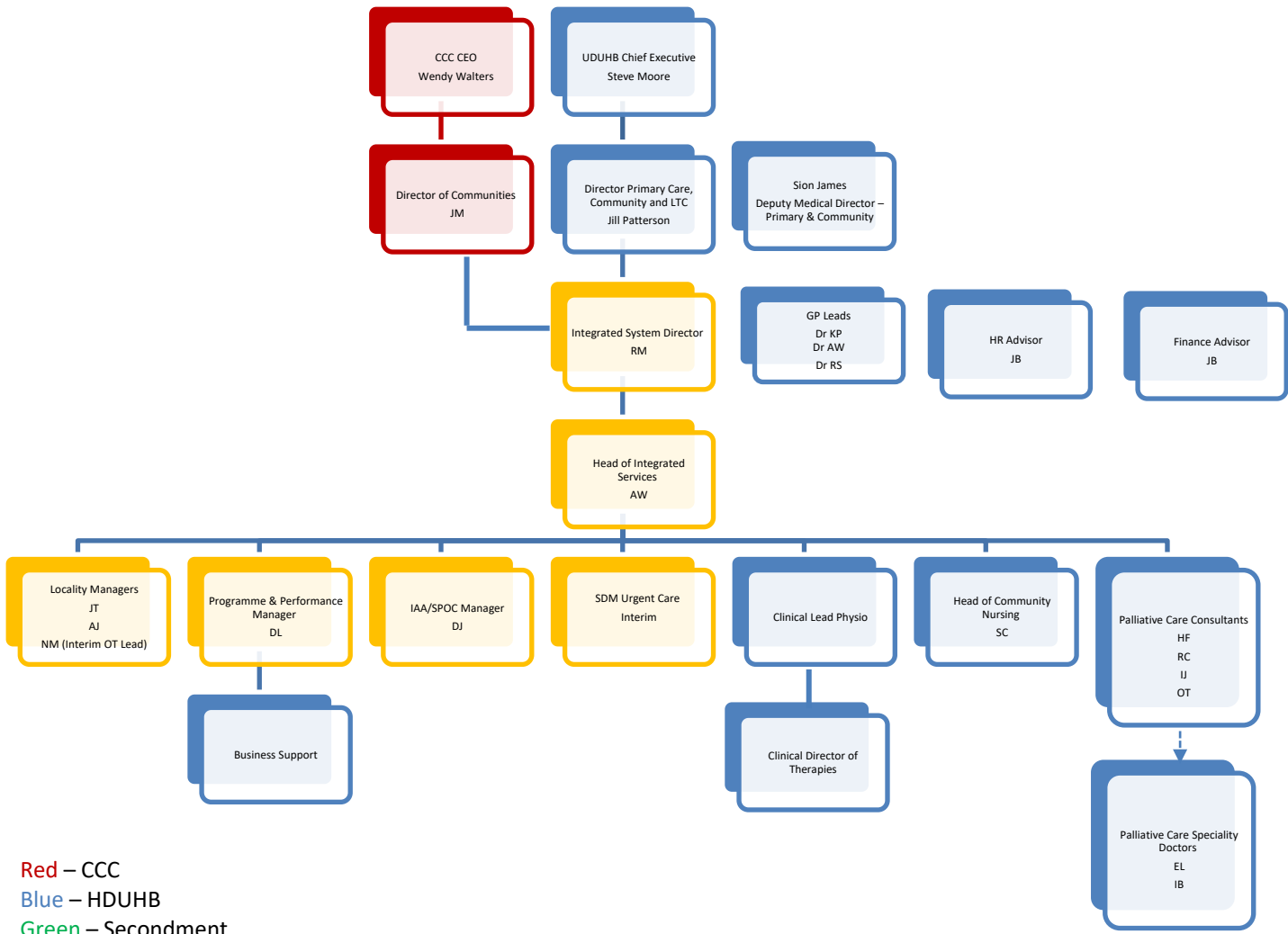
Palliative Care Team



Ceredigion Community Team



Carmarthenshire County Team



- Red – CCC
- Blue – HDUHB
- Green – Secondment
- Orange – Joint posts between HDUHB & CCC