

Population Assessment, Market Stability Report and Wellbeing Assessments

Stakeholder Reference Group

16th July 2021

**Martyn Palfreman, Head of West Wales Care
Partnership**

Legislative requirements

Population Assessment

- Part 2 Social Services and Wellbeing Act;
- Once every local authority electoral cycle;
- Joint assessment of need for care and support and support needs of carers;
- Assessment of the extent to which these needs are (not) being met;
- Details of the range and level of services- including preventative services - required to meet those needs;
- Details of how these services will be delivered through the medium of Welsh;
- Population Groups:
 - LD – Sensory Impairment – Older People – Unpaid Carers – Disability – Mental Health – Dementia – Children and Young People – Autism – VAWDASV



Clear and specific evidence base to inform planning and operational decisions

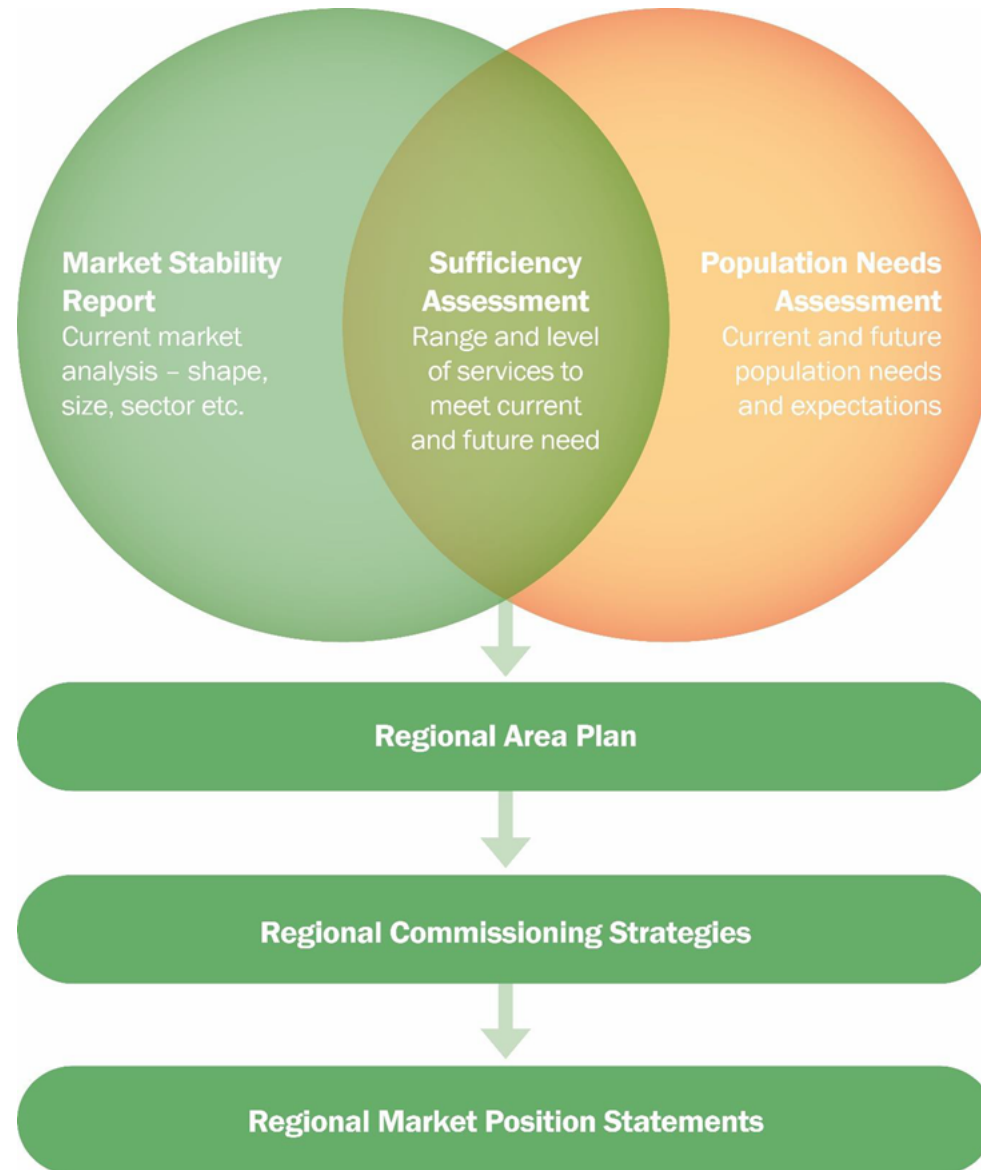
Market Stability Report

- Part 8 Social Services and Wellbeing Act;
- Once every local authority electoral cycle;
- Assessment of the sufficiency of care and support (regulated services) in meeting needs and demand for care and support;
- Impact of non-regulated services;
- Issues likely to affect sufficiency over the following 5 years;
- Services:
 - Care homes – family centres – adoption and fostering services - advocacy



A tool to assist RPBs in planning and commissioning quality care and support for their populations

Population Assessment and Market Stability Report



Wellbeing assessments

- The Wellbeing of Future Generations (Wales) Act 2015 (WFG Act) requires each PSB to prepare and publish an Assessment of the state of economic, social, environmental, and cultural well-being in its area no later than a year before it publishes its Local Wellbeing Plan. The Act identifies seven wellbeing goals which provide the vision and ambitions for the Wales We Want for today and in the future and recognises the importance of collaboration between bodies in achieving them.
- The Assessment of Local Wellbeing will provide the evidence-base to set the objectives in the 5-year Local Wellbeing Plan. PSB's are required to set these objectives in a way that accords with the sustainable development principle, i.e., acting in a manner which seeks to “ensure the needs of the present are met without compromising the ability of future generations to meet their own needs.”
- In the context of the current expected timescales of local government elections, the assessments must be published by March 2022.

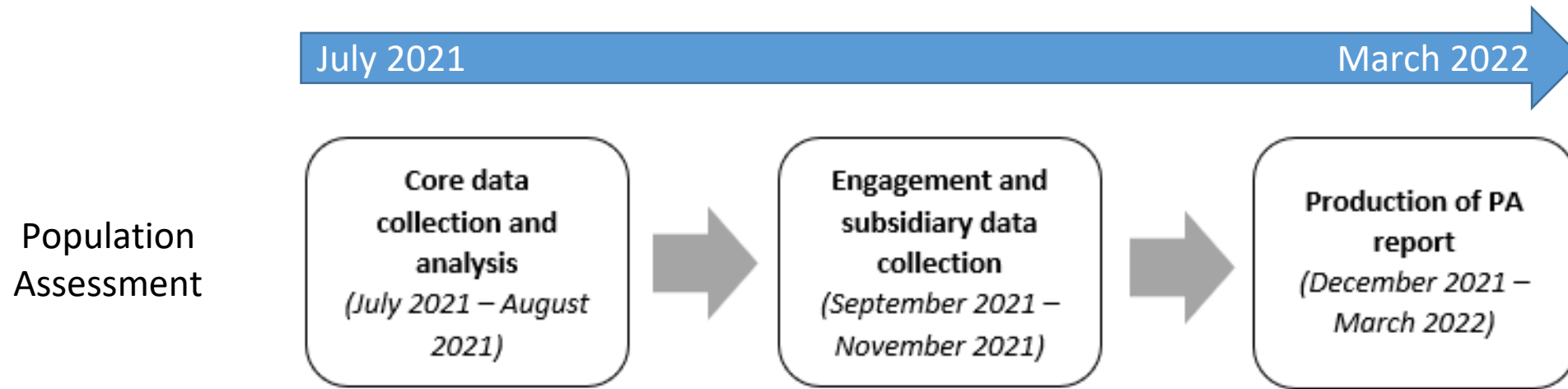
Joint working: Requirements and opportunities

- Whilst the Population Assessments are focused on health and social care needs, they will link to wider policy areas that cut across other partner agencies such as Public Services Boards (and also, Regional Collaborative Committees and Primary Care Clusters).
- Population Assessments need to consider the broader work underway to inform the needs assessment for care and support and also ensure that the assessment informs those of other partnerships.
- Clear overlap in key areas such as prevention and building community capacity.
- Opportunities for sharing population data and working together on engagement activity, which is key.

Joint working: What we are doing

- Monthly meetings of PSB and RPB leads;
- Joint Methodology Framework;
- Collaborative working on engagement:
 - Wellbeing survey
 - Engagement plan and toolkit;
- Sharing of relevant data drawn from Gorwel Digital Information System and West Wales Data Portal

Key stages





**Diolch
Thank you**

MJPalfreman@carmarthenshire.gov.uk