



Changes to urgent and emergency healthcare services for children and young people

What do you think?



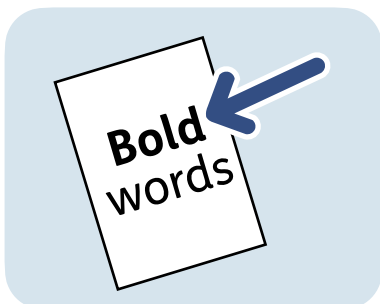
Easy Read



This is an Easy Read version of some hard information. It may not include all of the information but will tell you about the important parts.



This Easy Read information uses easier words and pictures. You may still want help to read it.



Some words are in **bold** - this means the writing is thicker and darker.



These are words that some people will find hard. When you see a bold word, we will explain it in the next sentence.

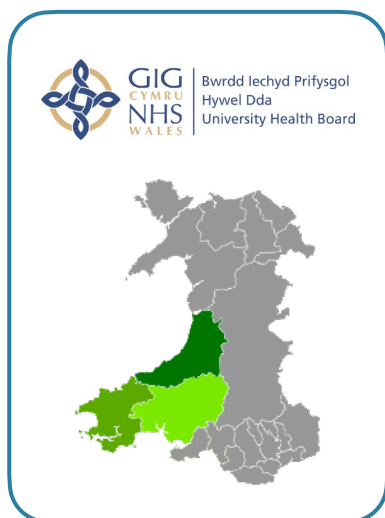


Blue and underlined words show links to websites and email addresses. You can click on these links on a computer.

What is in this booklet

About this booklet.....	4
About the questions	5
The questions	7
Questions about you	21
What happens next?	37
For more information	38

About this booklet



Hywel Dda organises and provides health services in:

- Carmarthenshire
- Ceredigion
- Pembrokeshire



We have 4 main hospitals:

- Bronglais in Aberystwyth
- Glangwili in Carmarthen
- Prince Philip in Llanelli
- Withybush in Haverfordwest



Below are some questions about making changes to our **urgent and emergency healthcare services** for children and young people who use:

- Withybush Hospital
- Glangwili Hospital

About the questions

The questions in this document will ask you:



- What you think about the 3 possible options.



- What you feel is good and bad about the 3 possible options.



- About anything else you think we need to think about.



You do not have to answer a question if you do not want to.



All of the information you give will be kept safe.

We follow the law when collecting and using your information.

The questions



Question 1: How are you involved with healthcare services for children and young people? *Please tick all the answers that apply to you.*

☐

I use the children and young people's healthcare services now, or I have used them in the past.

☐

I work in children and young people's healthcare services.

☐

I live in the Hywel Dda area.

☐

I am visiting the Hywel Dda area on holiday.

☐

I am the carer or family member of someone that uses the children and young people's services.

☐

I work for the NHS in a different healthcare service.

☐

I am answering these questions for my organisation.

☐

Other - please say below:

Option 1



There will be more **outpatient services** for children and young people at Withybush Hospital.

Outpatient services are for when a patient needs care in the hospital but does not need to stay overnight.

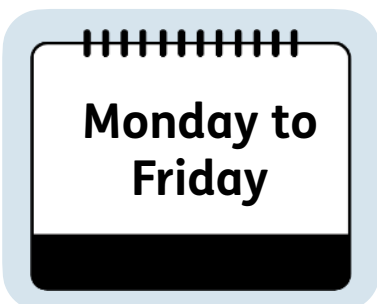
This would mean:



- Most children and young people can get outpatient services at Withybush Hospital.



- Children and young people can be seen by a children's doctor at Withybush within 72 hours of going to their local doctor's surgery or emergency department.



- Children and young people can go to see a children's doctor at Withybush from Monday to Friday.



Question 2: Please tell us how good or bad you think Option 1 is. *Please tick only 1 answer.*

Very good

Good

Not bad or good

Bad

Very bad

Don't know



Question 3: If you think Option 1 is a good option, please tell us why.



Question 4: If you think Option 1 is a bad option, please tell us why.

Option 2



There will be a PACU at Withybush Hospital. It will be open Monday to Friday, 10:00am to 6:00pm.



Remember, a PACU is a Paediatric Ambulatory Care Unit. It is where children can be seen by doctors and treated, then go home on the same day. A doctor decides who can come into the PACU.



There will be outpatient services as described in option 1, but these will be limited because of how much space there is for these services in the hospital.



If a child or young person needs to stay overnight they will be sent to Glangwili Hospital.



Question 5: Please tell us how good or bad you think Option 2 is. *Please tick only 1 answer.*

Very good

Good

Not bad or good

Bad

Very bad

Don't know



Question 6: If you think Option 2 is a good option, please tell us why.



Question 7: If you think Option 2 is a bad option, please tell us why.

Option 3



There will be a PACU at Withybush Hospital. It will be open Monday to Friday, 10:00am to 6:00pm.



There will be outpatient services as described in option 1, but these will be limited because of how much space there is for these services in the hospital.



If a child or young person needs to stay overnight they will be sent to Glangwili Hospital.

Option 3 will also include:



- A better arrival for children and young people going to the emergency department at Glangwili Hospital, such as a waiting area.



- Extra training for emergency department staff at Glangwili Hospital and Withybush Hospital.



Question 8: Please tell us how good or bad you think Option 3 is. *Please tick only 1 answer.*

Very good

Good

Not bad or good

Bad

Very bad

Don't know



Question 9: If you think Option 3 is a good option, please tell us why.



Question 10: If you think Option 3 is a bad option, please tell us why.



Question 11: Please tell us if you have any other comments about any of the 3 possible options.



Question 12: Please tell us about any groups of people that you think might be affected by any of the 3 possible options. These might be good or bad things.

Please now move on to the next part of the questionnaire.

Questions about you



We would like to ask you some questions about yourself.



This is to make sure that we are hearing from people from different backgrounds.



You do not have to give personal information if you do not want to.



Nobody will know that your answers have come from you.

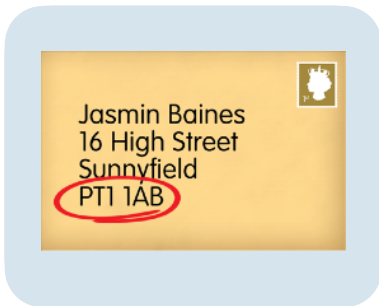


We follow the law when collecting and using your information.



To find out more about how we look after your information, you can go to: www.ors.org.uk/privacy

We have asked Opinion Research Services (ORS) to manage all of your information and answers.



Question 13: What is your postcode?

If you are answering these questions for an organisation, please go to Question 15.



Question 14: If you are answering these questions for yourself, and would like us to keep in contact with you about choosing the best option, please tell us:



Your name:



How you would like us to contact you. This might be your email address or phone number:



Remember, you do not have to give this information if you do not want to.

Please now go to Question 16.



Question 15: If you are answering for an organisation, please tell us:



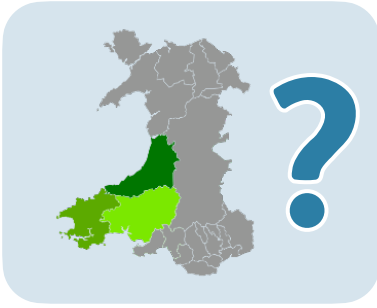
The organisation's name:



Who the organisation speaks for:



How the organisation has collected information about what the people it speaks for think:



Question 16: Which area of Wales do you live in? *Please tick only 1 answer.*

☐

Carmarthenshire

☐

Ceredigion

☐

Pembrokeshire

☐

Other

☐

I do not want to say



Question 17: Are you pregnant or have you given birth in the last year?

☐

Yes

☐

No

☐

I do not want to say



Question 18: How old were you on your last birthday?

☐

I do not want to say



Question 19: Do you have any children you look after that are under the age of 18? *Please tick all the answers that apply to you.*

☐

Yes, aged between 0 and 5

☐

Yes, aged between 6 and 11

☐

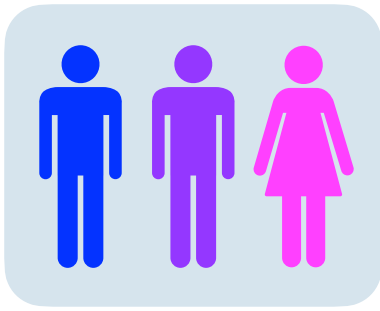
Yes, aged between 12 and 17

☐

No

☐

I do not want to say



Question 20: What is your gender?

☐

Man

☐

Woman

☐

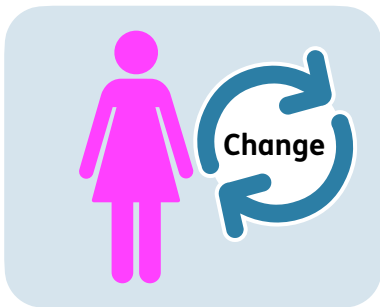
Non-binary - I am not a man
or a woman

☐

I use a different word

☐

I do not want to say



Question 21: Has your gender
changed from the one you were given
when you were born?

☐

Yes

☐

No

☐

I do not want to say



Question 22: Are you an unpaid carer for a family member or friend who is older, disabled, or very ill?

☐

Yes

☐

No

☐

I do not want to say



Question 23: If you are an unpaid carer, please tell us who you care for. *Please tick all the answers that apply to you.*

☐

I am the main carer of a disabled child or children.

☐

I am the main carer of a disabled adult who is over the age of 18.

☐

I am the main carer of an older person who is over the age of 65.

☐

I am a secondary carer - this means someone else is the main carer and you help out.

☐

I do not want to say.

Question 24: What is your **sexual orientation**? **Sexual orientation** means who you are attracted to.

☐

Asexual - I am not attracted to anyone

☐

Bisexual - I am attracted to men and women

☐

Gay man - I am a man attracted to other men

☐

Gay woman / lesbian - I am a woman attracted to other women

☐

Heterosexual / straight - I am attracted to people who are a different gender to me

☐

Other - please say below:





Question 25: Are you married or in a civil partnership?

☐

Yes

☐

No

☐

I do not want to say



Question 26: Are you disabled?

☐

Yes

☐

No

☐

I do not want to say



Question 27: If you are disabled, please tell us about your disability or health issue. *Please tick all the answers that apply to you.*

☐

I have an illness that I have had for a very long time, like cancer

☐

I have an illness to do with my mental health, like depression

☐

I have problems with moving around, like having to use a wheelchair

☐

I find it hard to talk to others

☐

I have a learning disability

☐

I am blind or find it hard to see

☐

I am deaf or find it hard to hear

☐

Other

☐

I do not want to say

Question 28: What is your religion?

☐

Buddhist

☐

Christian

☐

Hindu

☐

Jewish

☐

Muslim

☐

Sikh

☐

No religion

☐

Other

☐

I do not want to say

Question 29: What is your ethnic background?

☐

Arab

Asian / Asian British

☐

Bangladeshi

☐

Chinese

☐

Indian

☐

Pakistani

☐

Any other Asian background

Black / Black British

☐

African

☐

Caribbean

☐

Any other Black background



More than 1 ethnic background

☐

Black and White

☐

Asian and White

☐

Black and Asian

☐

Any other mixed background



Traveller

☐

Gypsy or Roma

☐

Irish



White

☐

British / English / Northern Irish / Scottish / Welsh

☐

Irish

☐

European

☐

Any other ethnic background

☐

I do not want to say



Question 30: How much money does your household make a year? This includes benefits.

☐

Below £10,000

☐

£10,001 to £20,000

☐

£20,001 to £30,000

☐

£30,001 to £40,000

☐

More than £40,000

☐

I do not want to say



Question 31: What is your main language? This is the language you speak most often and use in your home.

☐

English

☐

Welsh

☐

Other - please say below:

☐

I do not want to say

What happens next?



Thank you for answering these questions.



Please post your answers to:

Opinion Research Services

FREEPOST SS1018

PO Box 530

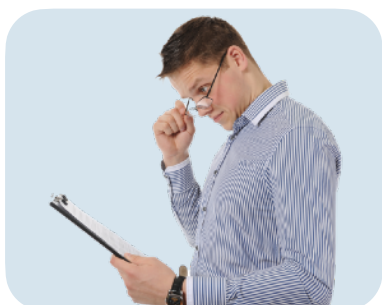
Swansea

SA1 1ZL

You do not need to put a stamp on the envelope.



You need to send your answers by Thursday 24 August 2023.



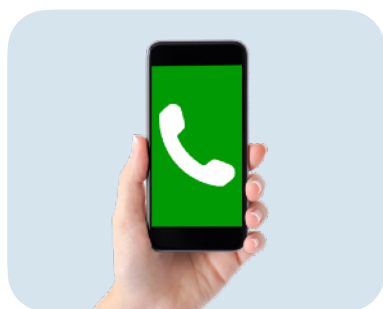
We will use all of the answers we get to make a decision about our 3 possible options.

For more information



You can look at our website here:
hduhb.nhs.wales/future-children-services

You can find out more by:



- Phone: 0300 303 8322



- Email:
Hyweldda.Engagement@wales.nhs.uk

This Easy Read information has been produced by easy-read-online.co.uk