

Talking about care for children at hospital



GIG
CYMRU
NHS
WALES

Bwrdd Iechyd Prifysgol
Hywel Dda
University Health Board

This is the children's version. It may not include all the information but has the important parts.



Hello

We are Hywel Dda University Health Board.

We run lots of health services across Carmarthenshire, Ceredigion and Pembrokeshire, including hospitals. If you have to go to hospital, it's important you get the help you need. We want to make the right plans so doctors, nurses and emergency staff can give you the best care.

We have 3 stories (which we call 'options') about a boy going to hospital. We'd like to know which one you think works the best!

This is Huw!



and Mario Kart with his brother.



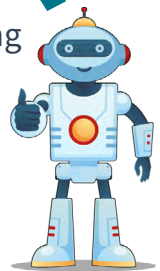
He plays superheroes with his dad

Huw likes living in Pembrokeshire.



He loves popcorn

and building robots.



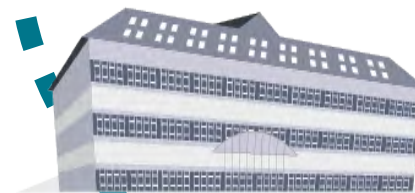
He had an x-ray that showed his arm wasn't broken.



He was cycling with his friends. He fell off his bike and hurt his arm.



His dad drove him to the Minor Injury Unit at Withybush Hospital.



So, his dad took him to his local doctors' surgery.

He was given some advice and if needed, an appointment will be made for him to see a local doctor or nurse.



A few days later Huw felt ill. He was struggling to breathe and had a wheeze.



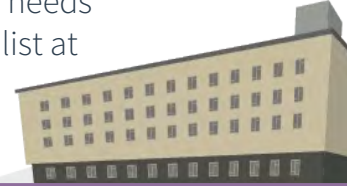
This is where the story splits.

Option 1 ➡

Huw sees a doctor at the local surgery, who then talks to the children's doctor about how Huw is feeling.



The children's doctor decides if Huw needs to see a specialist at **Glangwili Hospital**.



This is where all children have to go if they have a serious illness so they can stay in hospital overnight.



Huw stays overnight in **Glangwili Hospital** so children's doctors and nurses can keep a check on him.



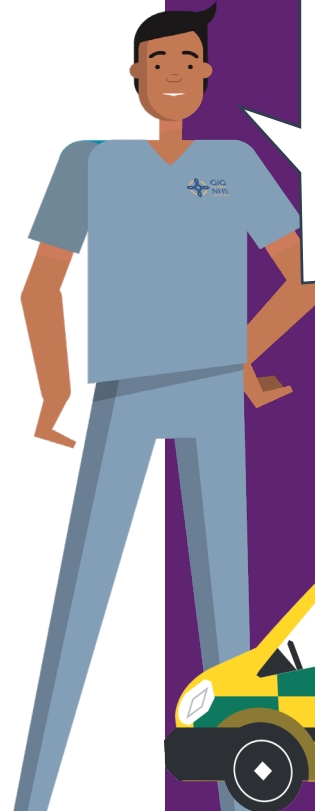
The next day the children's doctors think Huw is ok and he can go home.

They give Huw some advice and an appointment back at **Withybush Hospital** between 9am and 5pm, Monday to Friday.



Option 1 would mean that all children's health services work in the same way they do now, but with more appointments with children's doctors or nurses provided.

If there's an emergency Huw's family can phone 999 and the ambulance crew will take him to **Glangwili Hospital** Emergency Department.



Option 2 →

Huw sees a doctor at the local surgery, who then talks to the children's doctor about how Huw is feeling.



The children's doctor decides that Huw should go into the **Paediatric Ambulatory Care Unit (PACU*)** at **Withybush Hospital**.



i PACU — Doctors and nurses at this unit can assess and treat ill children on the same day. They don't have to stay overnight.



When he gets there Huw is assessed and given a care plan. Doctors and nurses keep a check on him up until 6pm. If Huw is getting better, he can go home and he's given a follow-up appointment back at **Withybush Hospital** if he needs one.

Huw gets worse while he's in the Paediatric Ambulatory Care Unit, so the doctor sends him to **Glangwili Hospital** in a Dedicated



Ambulance Vehicle. It has staff that are trained in caring for children. Huw stays in Glangwili hospital overnight.

Huw leaves hospital the next morning and is given a follow-up appointment at **Withybush Hospital** between 9am and 5pm, Monday to Friday.



Option 2 would mean children and young people could be referred to the Paediatric Ambulatory Care Unit at Withybush Hospital and:

- **Withybush Hospital** would have more children's health services available.

If there's an emergency Huw's family can phone 999 and the ambulance crew will take him to **Glangwili Hospital** Emergency Department.



Option 3

Huw sees a doctor at the local surgery, who then talks to the children's doctor about how Huw is feeling.



The children's doctor decides that Huw should go into the **Paediatric Ambulatory Care Unit (PACU*)** at **Withybush Hospital**.



i PACU — Doctors and nurses at this unit can assess and treat ill children on the same day. They don't have to stay overnight.

When he gets there, Huw is assessed and given a care plan.

In this option, he may have extra doctors and nurses to keep a check on him up until 6pm. If Huw is getting better, he can go home, and he will be given a follow-up appointment back at **Withybush Hospital** if he needs one.



Huw gets worse while he's in the Paediatric Ambulatory Care Unit, so the doctor sends him to **Glangwili Hospital** in a Dedicated Ambulance Vehicle that has staff that are trained in caring for children. It takes him directly to the children's ward.



Huw leaves hospital the next morning and is given a follow-up appointment at **Withybush Hospital** between 9am and 5pm, Monday to Friday.



Option 3 would mean children and young people could be referred to the Paediatric Ambulatory Care Unit at Withybush Hospital and:

- **Withybush Hospital** would have more children's health services available.
- Staff in the emergency departments in **Withybush** and **Glangwili** hospitals would receive extra training to look after children.

In an emergency Huw's family can phone 999 and the ambulance crew will take him to **Glangwili Hospital** Emergency Department.



What is different in the 3 options?

	Option 1	Option 2	Option 3
Rapid Access Clinic. When children and young people are referred, they are seen quickly by a children's doctor at Withybush Hospital within 3 days.	Yes	Some (lack of space due to PACU*)	Some (lack of space due to PACU*)
Booked outpatient appointments at Withybush Hospital if they don't need an assessment or overnight stay.	Yes	Some (lack of space due to PACU*)	Some (lack of space due to PACU*)
Paediatric Ambulatory Care Unit at Withybush Hospital open from 10am to 6pm, Monday to Friday. Doctors and nurses at this unit can assess and treat ill children on the same day. They don't have to stay overnight.	No	Yes	Yes
Some non-emergency treatment and day care like returning for medication or dressing change.	No	No	Yes
Improved services at Glangwili Hospital emergency department (A&E) so children and young people have a better experience (like having a waiting area just for them).	No	No	Yes
Extra training for emergency department (A&E) staff at both hospitals to treat children and young people when a review by a children's doctor is not needed.	No	No	Yes
Extra training for Paediatric Ambulatory Care Unit staff at Glangwili Hospital to manage emergency department (A&E) activity so it's better for children and young people.	No	No	Yes

This will cost about:

£880,000

£1.3 million

£1.3 million
with the training
provided by our
own health board
team.



**Thanks for
reading this!**



**Please ask your parent or carer to
help you fill in the questionnaire.**

i PACU — Doctors and nurses at this unit can assess and treat ill children on the same day. They don't have to stay overnight.