



Changes to urgent and emergency care services for children and young people

What do you think?



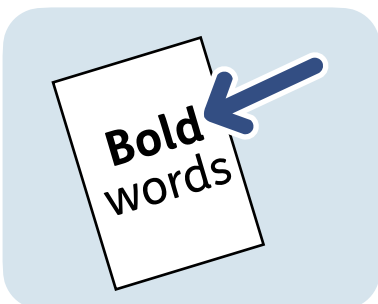
Easy Read



This is an Easy Read version of some hard information. It may not include all of the information but will tell you about the important parts.



This Easy Read information uses easier words and pictures. You may still want help to read it.



Some words are in **bold** - this means the writing is thicker and darker.



These are words that some people will find hard. When you see a bold word, we will explain it in the next sentence.

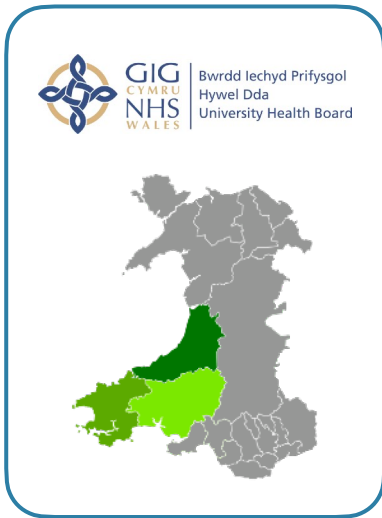


Blue and underlined words show links to websites and email addresses. You can click on these links on a computer.

What is in this booklet

Introduction.....	4
Why we needed temporary changes.....	6
What we are suggesting.....	8
What do you think?.....	20
What happens next?	23
For more information	24

Introduction



Hywel Dda organises and provides health services in:

- Carmarthenshire
- Ceredigion
- Pembrokeshire



We have 4 main hospitals:

- Bronglais in Aberystwyth
- Glangwili in Carmarthen
- Prince Philip in Llanelli
- Withybush in Haverfordwest



We are looking at making changes to our **urgent and emergency care services** for children and young people who use:

- Withybush Hospital
- Glangwili Hospital

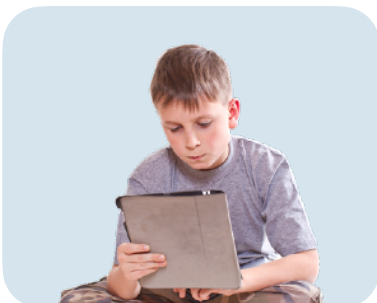


Urgent and emergency care services provide care that needs to happen right away.



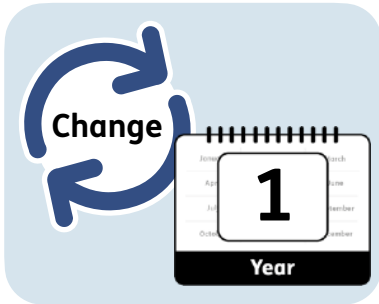
We have come up with 3 options. Each option is different.

We would like to know what you think about these options.



Please read this information and then answer the questions that come with this booklet to tell us what you think.

Why we needed temporary changes

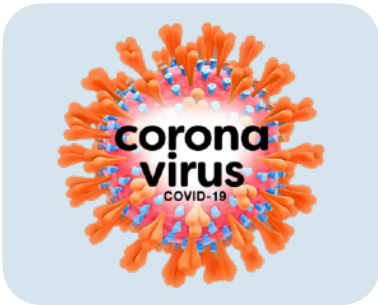


Temporary changes are changes that are made for a short time - they do not last forever.

We have had to make temporary changes since 2014 for these reasons:



- Not having enough staff.



- Covid-19.



- More children were getting **Respiratory Syncytial Virus (RSV).**

Respiratory Syncytial Virus (RSV) is an illness that is like a cold, but it can make children very ill. Sometimes they need to go to the hospital.

We fixed these issues by making temporary changes, like:



- Changing when children and young people's services at Withybush Hospital are open.



- Closing Withybush Hospital's **Paediatric Ambulatory Care Unit (PACU)**.

The **Paediatric Ambulatory Care Unit (PACU)** is where children can be seen by doctors and treated, then go home on the same day.



A doctor decides who can come into the PACU.



The Health Board is hoping to be able to build a new hospital in the South of the area.

We now want to make new changes that will last a long time.

What we are suggesting

To come up with our 3 options we worked with:



- Children and young people.



- Their parents and families.



- Services that provide care for children and young people.

These are the same across the 3 options



No matter which of the 3 options we choose, these things will stay the same:



- Children under the age of 16 can go to both Glangwili and Withybush hospitals for **minor injuries**.

Minor injuries are when your child is injured, but not seriously hurt. A minor injury is something like an insect bite or a small burn.



- Children under the age of 16 will go to Glangwili Hospital for emergency care.



- There will be no overnight or weekend care for children and young people at Withybush Hospital.



These things will also stay the same:

- All children's services at Glangwili Hospital.
- More money for staff at the PACU at Glangwili Hospital to support the treatment of children and young people who would have had to go to Withybush Hospital in the past.
- Information for emergency staff that says what to do if a child or young person who is seriously hurt or ill arrives at Withybush Hospital, to make sure they have the best care at the right hospital.
- Special ambulances that move children and young people from Pembrokeshire to Glangwili Hospital when needed.
- Better telephone and computer links between Pembrokeshire doctors surgeries and children's services at Withybush Hospital.





Here are the 3 possible options:

Option 1



There will be more **outpatient services** for children and young people at Withybush Hospital.

Outpatient services are for when a patient needs care in the hospital but does not need to stay overnight.

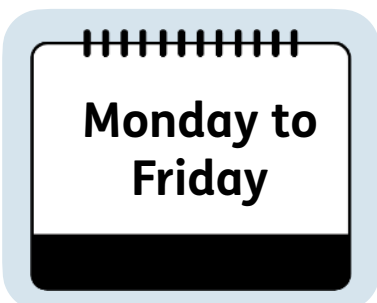
This would mean:



- Most children and young people can get outpatient services at Withybush Hospital.



- Children and young people can be seen by a children's doctor at Withybush Hospital within 72 hours of going to their local doctor's surgery or emergency department.



- Children and young people can go to see a children's doctor at Withybush from Monday to Friday.



Option 1 would mean there will be no PACU at Withybush Hospital. This means a child with a serious illness who needs to stay at the hospital overnight would be treated at Glangwili Hospital.



Remember, a PACU is a Paediatric Ambulatory Care Unit. It is where children can be seen by doctors and treated, then go home on the same day. A doctor decides who can come into the PACU.

Good things about Option 1 include:



- We would only have to hire a few more members of staff.



- We would not have to make any big changes to buildings.



- We would be able to use more rooms to see more patients.

More good things about Option 1 include:



- Patients will be able to access different services in 1 place.



- Patients who live close to Withyush Hospital will not have to travel as far to access outpatient services.

A challenge with Option 1 is:



- We may not have enough members of staff who are trained to care for children or young people when they are being moved to somewhere else for treatment.

Option 2



The Paediatric Ambulatory Care Unit (PACU) is where children can be seen by doctors and treated, then go home on the same day. A doctor decides who can come into the PACU.



There will be a PACU at Withybush Hospital. It will be open Monday to Friday, 10.00am to 6.00pm.



There will be outpatient services described in Option 1, but these will be limited because of how much space there is for these services in the hospital.



If a child or young person needs to stay overnight, they will be sent to Glangwili Hospital.

Good things about Option 2 include:



- Patients will be able to access more services because of the PACU - meaning less patients will have to travel somewhere else to be treated.



- We would not have to make any big changes to buildings.



- Patients will be able to access different services in 1 place.



- More services will be available to patients who live close to Withybush Hospital.

Some challenges with Option 2 include:



- We would have to hire more staff.

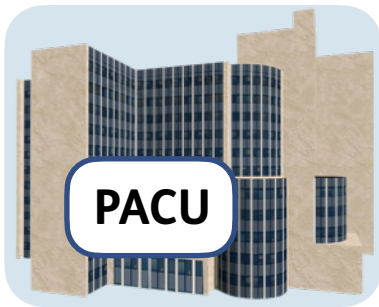


- This option will only work well if we are able to find enough staff.



- We may not have enough members of staff who are trained to care for children or young people when they are being moved to somewhere else for treatment.

Option 3



There will be a Paediatric Ambulatory Care Unit (PACU) is where children can be seen by doctors and treated, then go home on the same day. A doctor decides who can come into the PACU.



There will be a PACU at Withybush Hospital. It will be open Monday to Friday, 10.00am to 6.00pm.



There will be outpatient services described in Option 1. However, these will be limited because of how much space there is for these services in the hospital.



If a child or young person needs to stay overnight, they will be sent to Glangwili Hospital.

Option 3 will also include:



- A better arrival for children and young people going to the emergency department at Glangwili Hospital, such as a waiting area.



- Extra training for emergency department staff at Glangwili Hospital and Withybush Hospital.

Good things about Option 3 include:



- Patients will be able to access lots more services because of the PACU.



- We would not have to make any big changes to buildings.



- Patients will be able to access different services in 1 place.



There will also be more services available to patients who live close to Withybush Hospital.

Some challenges with Option 3 include:



- We would have to hire more staff.



- This option will only work well if we are able to find enough staff.



- We may not have enough members of staff who are trained to care for children or young people when they are being moved to somewhere else for treatment.

What do you think?



We collected a lot of information about which of the 3 options is best.

We found out there are good and bad things about each of the options.



We would like to know what you think about the 3 options.



We would like to hear from everyone, particularly people who use our children and young people's services now or plan to in the future.

We would like to know what you think because it will help us to:



- Decide which option is best.



- Know how the options might affect different groups of people.



- Meet children and young people's needs.

How to tell us what you think



Please tell us what you think by 24 August 2023, by:



- Answering the questions that come with this booklet.



- Going online to www.hduhb.nhs.wales/future-children-services



- Emailing hyweldda.engagement@wales.nhs.uk



- Speaking to us at one of our listening events. You can find out more about these at www.hduhb.nhs.wales/future-children-services

What happens next?



Please fill in the questions that come with this booklet.



Please post your answers to:

Opinion Research Services

FREEPOST SS1018

PO Box 530

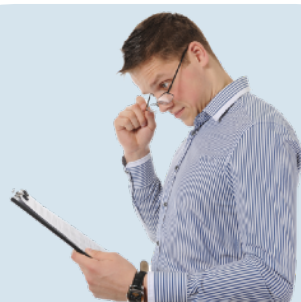
Swansea

SA1 1ZL

You do not need to put a stamp on the envelope.



You need to send your answers by Thursday 24 August 2023.



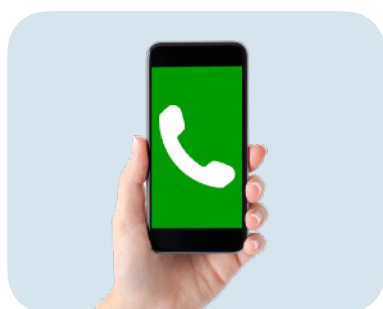
We will use all of the answers we get to make a decision about our 3 possible options.

For more information



You can look at our website here:
hduhb.nhs.wales/future-children-services

You can find out more by:



- Phone: 0300 303 8322 - calling this number will cost you the same as calling a local number.



- Email:
Hyweldda.Engagement@wales.nhs.uk

This Easy Read information has been produced by easy-read-online.co.uk