



Bwrdd Iechyd Prifysgol
Hywel Dda
University Health Board

Performance Trend Charts: data as at 30th April 2021

Click a link below to view the trend chart and data for that indicator

Better Prevention & Self-Management

- ['6 in 1' vaccine](#)
- [MMR vaccine](#)
- [Attempt to quit smoking](#)
- [CO validated as quit smoking](#)

Motivated & Sustainable Workforce

- [Performance appraisals \(PADR\)](#)
- [Core Skills Training Framework \(CSTF\)](#)
- [Sickness absence](#)
- [Complaints](#)
- [Consultants/SAS doctors - current job plan](#)

Higher Value, Rapid Improvement & Innovation

- [Hospital initiated cancellations](#)
- [Agency spend](#)
- [Finance](#)

Quality and Accessible Services

- [C.difficile](#)
- [E.coli](#)
- [S.aureus](#)
- [Mental health delayed transfers of care \(DTOC\)](#)
- [Non-mental health DTOC](#)
- [Ambulance red calls](#)
- [Ambulance handovers over 1 hour](#)
- [A&E/MIU 4 hour waits](#)
- [A&E/MIU 12 hour waits](#)
- [Admission to stroke unit <4 hours](#)
- [Assessed by stroke consultant <24 hours](#)
- [Stroke patients - speech and language therapy](#)
- [Single cancer pathway](#)
- [Delayed follow-ups - all specialties](#)
- [Ophthalmology patients seen by target date](#)
- [Diagnostic waiting times](#)
- [Therapy waiting times](#)
- [Referral to treatment \(RTT\) <=26 weeks](#)
- [RTT patients waiting 36 weeks+](#)
- [Neurodevelopment assessment](#)
- [Psychological therapy - adults](#)

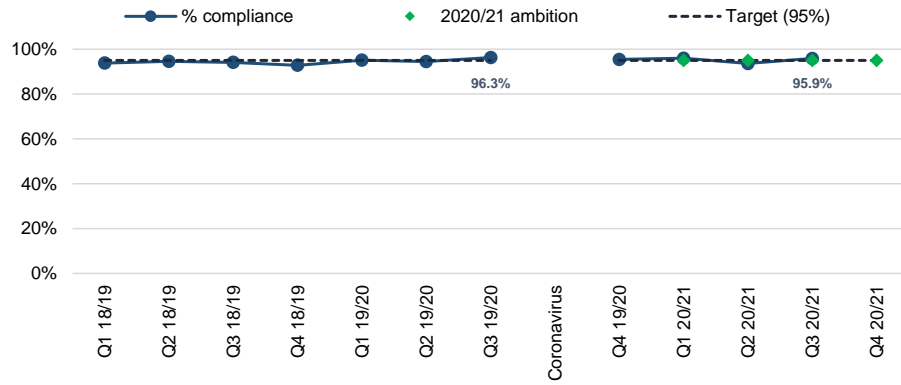


Additional resources (intranet access needed):

[Integrated Performance Assurance Reports \(IPAR\) and performance overview](#)



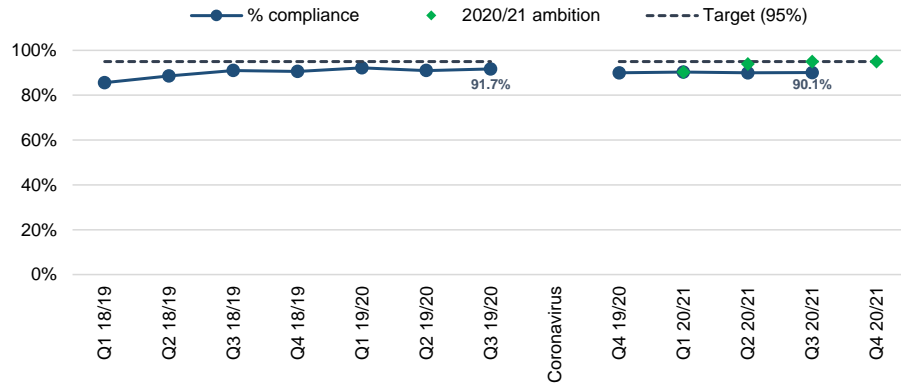
% children receiving 3 doses of '6 in 1' vaccine by age 1



% children receiving 3 doses of '6 in 1' vaccine by age 1	Q1 18/19	Q2 18/19	Q3 18/19	Q4 18/19	Q1 19/20	Q2 19/20	Q3 19/20	Coronavirus	Q4 19/20	Q1 20/21	Q2 20/21	Q3 20/21	Q4 20/21
% compliance	93.8%	94.6%	94.1%	92.8%	95.1%	94.5%	96.3%		95.5%	96.0%	93.6%	95.9%	
2020/21 ambition										95%	95%	95%	95%
Target (95%)	95%	95%	95%	95%	95%	95%	95%		95%	95%	95%	95%	95%



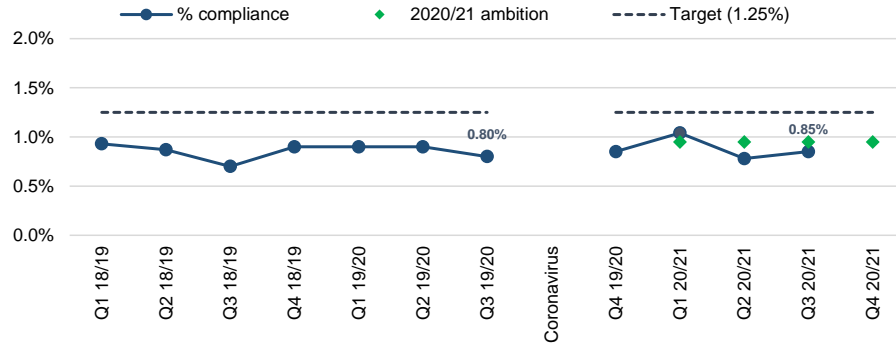
% children receiving 2 doses of MMR vaccine by age 5



% children receiving 2 doses of MMR vaccine by age 5	Q1 18/19	Q2 18/19	Q3 18/19	Q4 18/19	Q1 19/20	Q2 19/20	Q3 19/20	Coronavirus	Q4 19/20	Q1 20/21	Q2 20/21	Q3 20/21	Q4 20/21
% compliance	85.6%	88.6%	91.0%	90.6%	92.2%	91.0%	91.7%		90.0%	90.3%	90%	90%	
2020/21 ambition										90%	94%	95%	95%
Target (95%)	95%	95%	95%	95%	95%	95%	95%		95%	95%	95%	95%	95%



% of adult smokers who make a quit attempt via smoking cessation services (in quarter)*

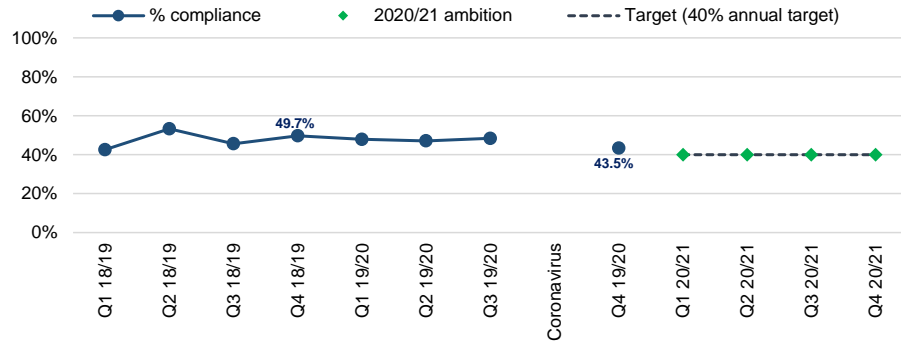


* quarterly figures are provided to show the trend; actual target is 5% cumulative by 31st March 20201

% of adult smokers who make a quit attempt via smoking cessation services (in quarter)*	Q1 18/19	Q2 18/19	Q3 18/19	Q4 18/19	Q1 19/20	Q2 19/20	Q3 19/20	Coronavirus	Q4 19/20	Q1 20/21	Q2 20/21	Q3 20/21	Q4 20/21
	% compliance	0.93%	0.87%	0.70%	0.90%	0.90%	0.90%		0.80%		0.85%	1.04%	0.78%
2020/21 ambition										0.95%	0.95%	0.95%	0.95%
Target (1.25%)	1.25%	1.25%	1.25%	1.25%	1.25%	1.25%	1.25%		1.25%	1.25%	1.25%	1.25%	1.25%
Data Labels							0.80%					0.85%	



% smokers who are CO-validated as quit at 4 weeks*



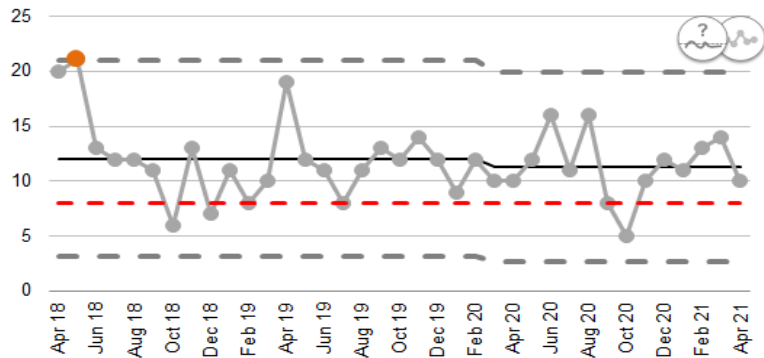
* during the COVID pandemic, Welsh Government have advised CO validation is no longer part of treatment due to the risk of infection

% smokers who are CO-validated as quit at 4 weeks*	Q1 18/19	Q2 18/19	Q3 18/19	Q4 18/19	Q1 19/20	Q2 19/20	Q3 19/20	Coronavirus	Q4 19/20	Q1 20/21	Q2 20/21	Q3 20/21	Q4 20/21
% compliance	42.6%	53.3%	45.6%	49.7%	47.9%	47.1%	48.4%		43.5%				
2020/21 ambition										40%	40%	40%	40%
Target (40% annual target)										40%	40%	40%	40%

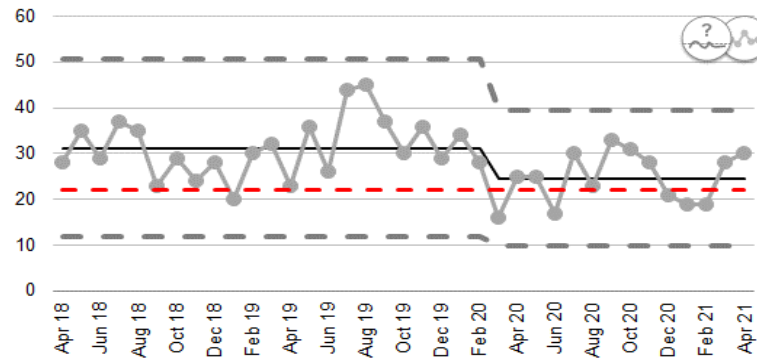


Infections

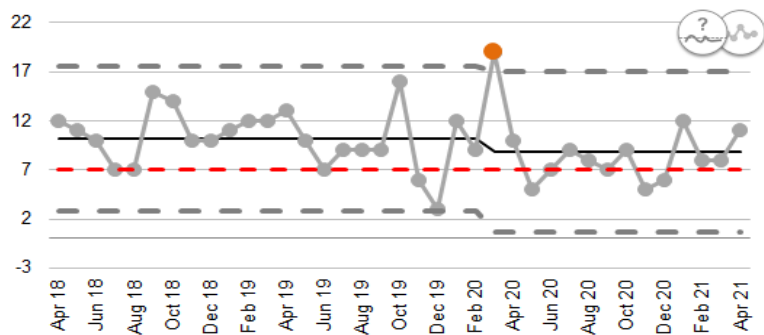
Number of cases of C.diff (in month)



Number of cases of E.Coli (in month)



Number of cases of S.aureus (in month)



KEY

Chart icons

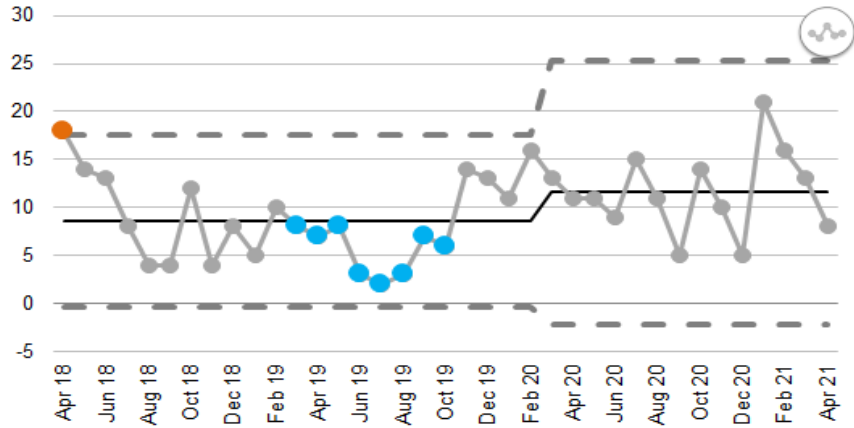


Chart markers (dots)

- orange = area of concern
- grey = within expected limits
- blue = area of improvement



Mental Health DTOC cases (12 mth reduction target)



KEY

Chart icons

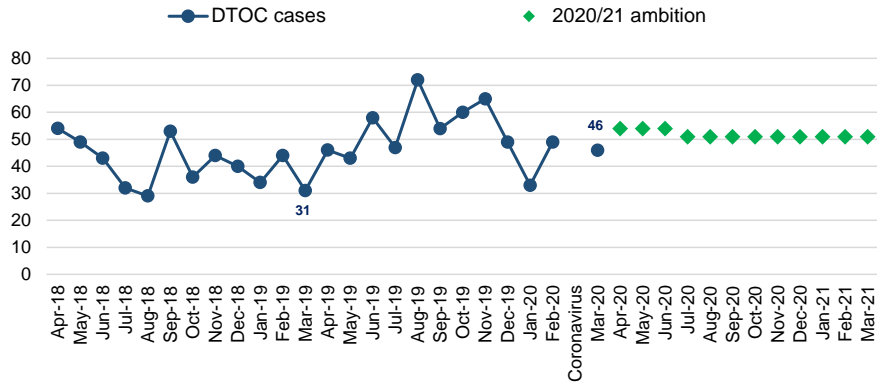


Chart markers (dots)

- orange = area of concern
- grey = within expected limits
- blue = area of improvement



Non Mental Health DTOC cases (12 mth reduction target)



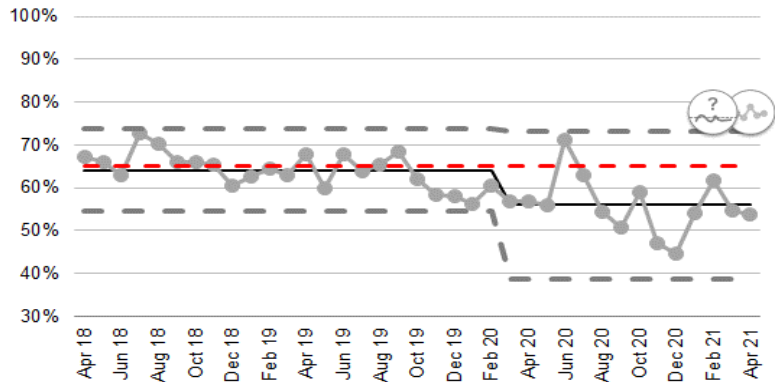
Non Mental Health DTOC cases (12 mth reduction target)		Coronavirus																																				
	Apr-18	May-18	Jun-18	Jul-18	Aug-18	Sep-18	Oct-18	Nov-18	Dec-18	Jan-19	Feb-19	Mar-19	Apr-19	May-19	Jun-19	Jul-19	Aug-19	Sep-19	Oct-19	Nov-19	Dec-19	Jan-20	Feb-20	Mar-20	Apr-20	May-20	Jun-20	Jul-20	Aug-20	Sep-20	Oct-20	Nov-20	Dec-20	Jan-21	Feb-21	Mar-21		
DTOC cases	54	49	43	32	29	53	36	44	40	34	44	31	46	43	58	47	72	54	60	65	49	33	49	46														
2020/21 ambition																									54	54	54	51	51	51	51	51	51	51	51	51	51	

Due to COVID-19, DTOC census patient number monitoring has been suspended

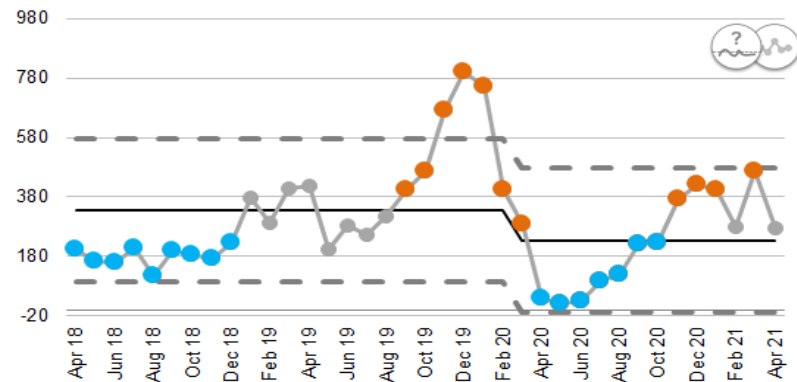


Emergency Care

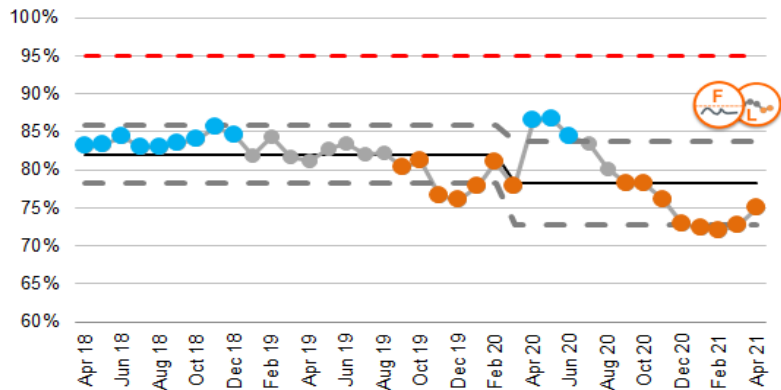
% of responses to ambulance red calls within 8 mins



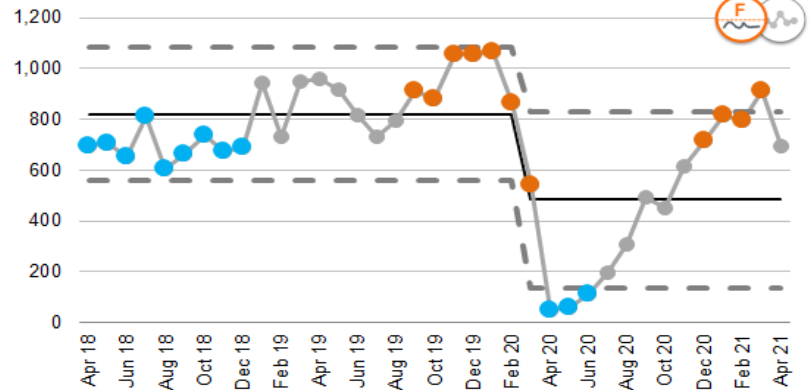
Ambulance handovers taking longer than 1 hour



% of patients seen within 4 hours in A&E/MIU



Patients waiting more than 12 hours in A&E/MIU



KEY

Chart icons



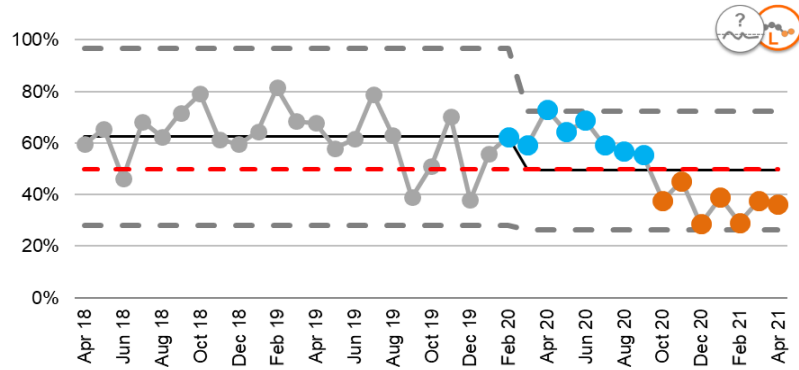
Chart markers (dots)

- orange = area of concern
- grey = within expected limits
- blue = area of improvement

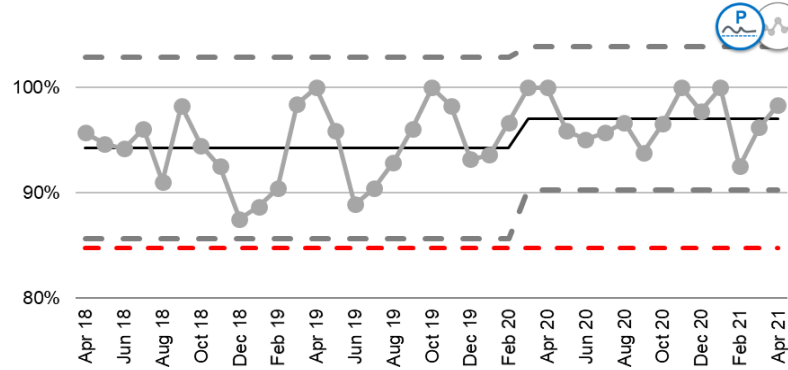


Stroke

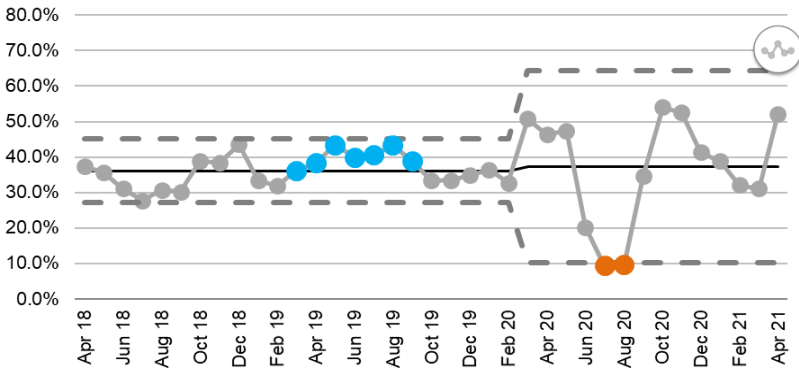
Admission to a stroke unit within 4 hours



Assessed by stroke consultant within 24 hours



Stroke patients receiving required minutes for SALT (Improvement target)



KEY

Chart icons

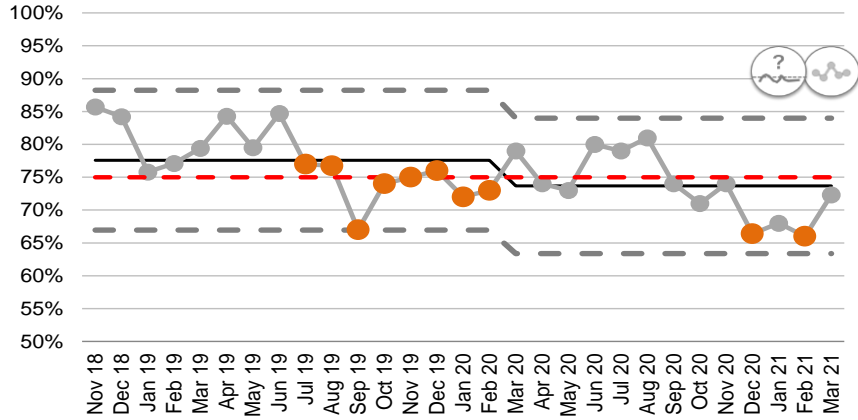


Chart markers (dots)

- orange = area of concern
- grey = within expected limits
- blue = area of improvement



Patients starting first definitive cancer treatment < 62 days



KEY

Chart icons

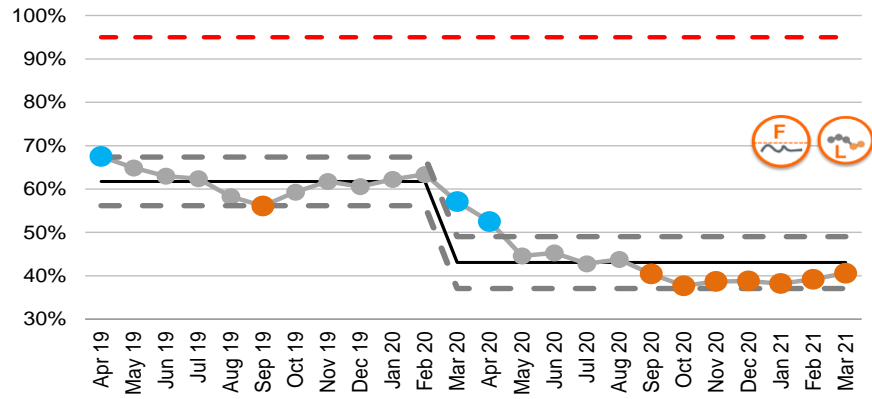


Chart markers (dots)

- orange = area of concern
- grey = within expected limits
- blue = area of improvement



R1 eye care patients seen by target date (or <25% excess)



KEY

Chart icons

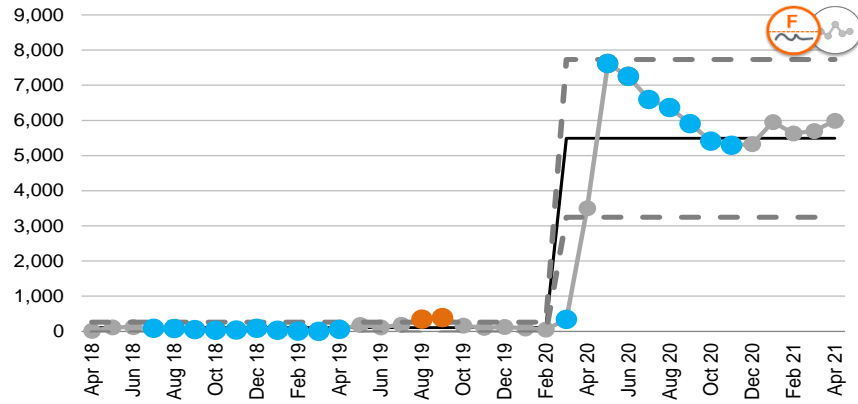


Chart markers (dots)

- orange = area of concern
- grey = within expected limits
- blue = area of improvement



Patients waiting 8 weeks+ for a specified diagnostic



KEY

Chart icons

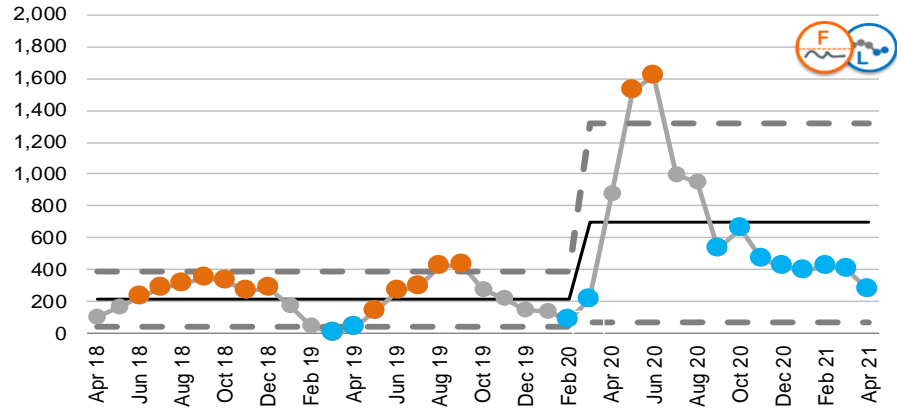


Chart markers (dots)

- orange = area of concern
- grey = within expected limits
- blue = area of improvement



Waiting more than 14 weeks for a specific therapy



KEY

Chart icons

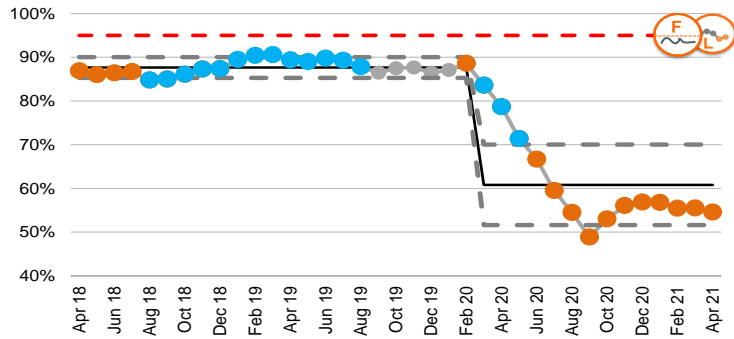


Chart markers (dots)

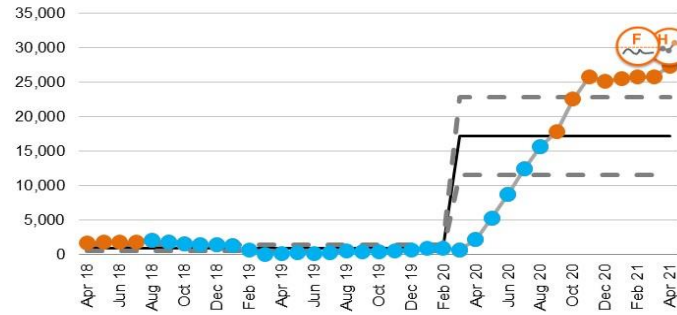
- orange = area of concern
- grey = within expected limits
- blue = area of improvement



Patients waiting less than 26 weeks from referral to treatment



Patients waiting > 36+ weeks from referral to treatment



KEY

Chart icons



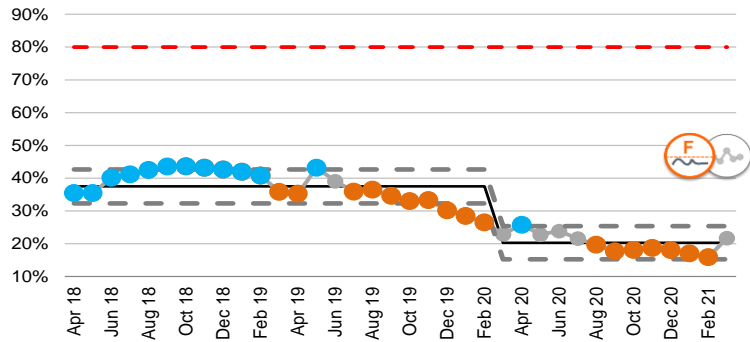
Chart markers (dots)

- orange = area of concern
- grey = within expected limits
- blue = area of improvement

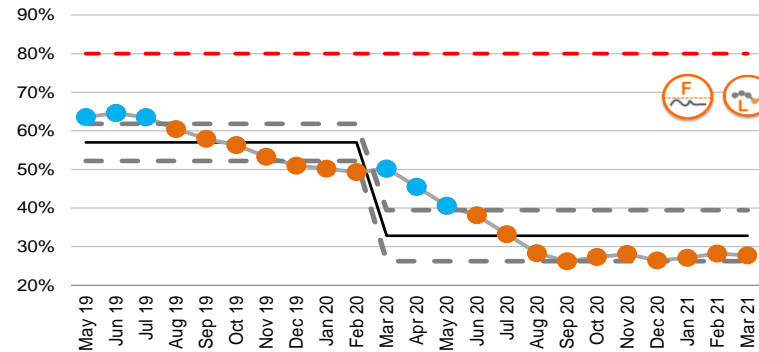


Neurodevelopment and psychological services

Children/young adults waiting < 26 weeks for a neurodevelopment assessment



Adults waiting < 26 weeks to start a psychological therapy



KEY

Chart icons

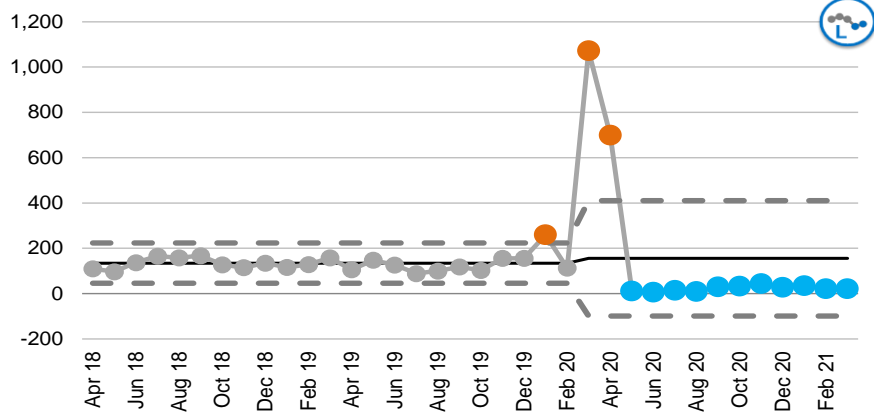


Chart markers (dots)

- orange = area of concern
- grey = within expected limits
- blue = area of improvement



Hospital Initiated Cancellations within 24 hours (5% reduction target)



KEY

Chart icons

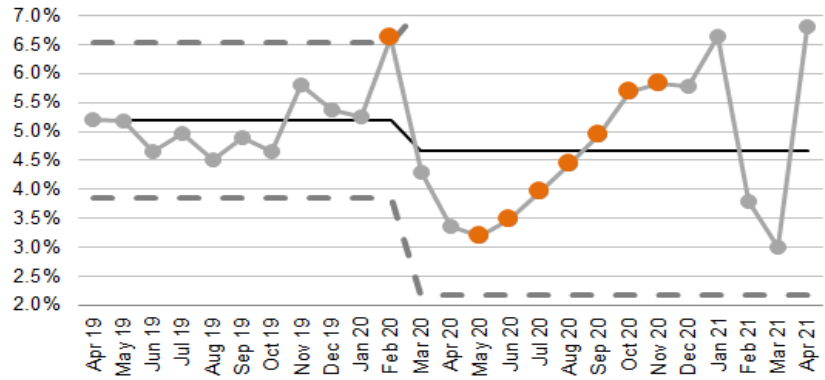


Chart markers (dots)

- orange = area of concern
- grey = within expected limits
- blue = area of improvement



Agency spend as a % of the total pay bill



KEY

Chart icons

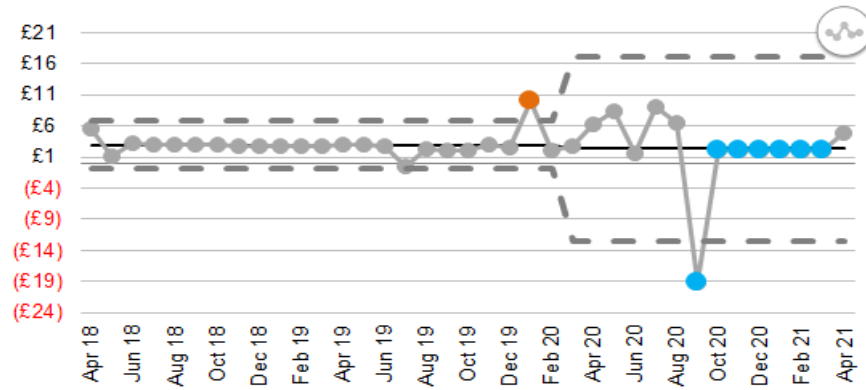


Chart markers (dots)

- orange = area of concern
- grey = within expected limits
- blue = area of improvement



Financial in month deficit (£m)



KEY

Chart icons

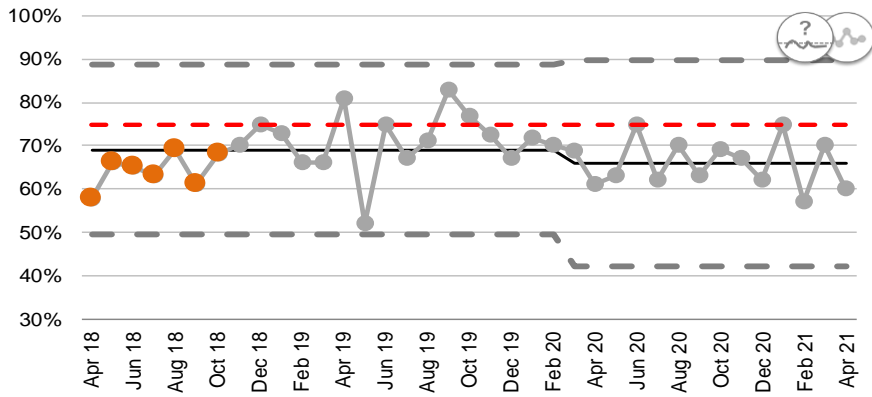


Chart markers (dots)

- orange = area of concern
- grey = within expected limits
- blue = area of improvement



% complaints with final or interim reply <= 30 working days



KEY

Chart icons

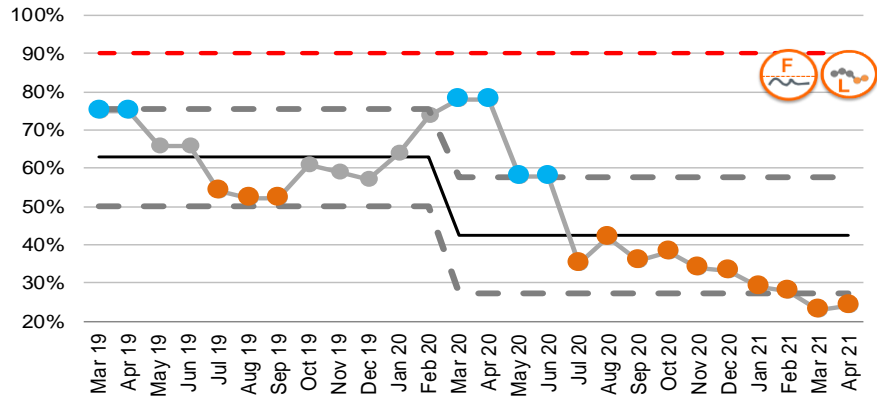


Chart markers (dots)

- orange = area of concern
- grey = within expected limits
- blue = area of improvement



Consultants/SAS doctors with a current job plan



KEY

Chart icons



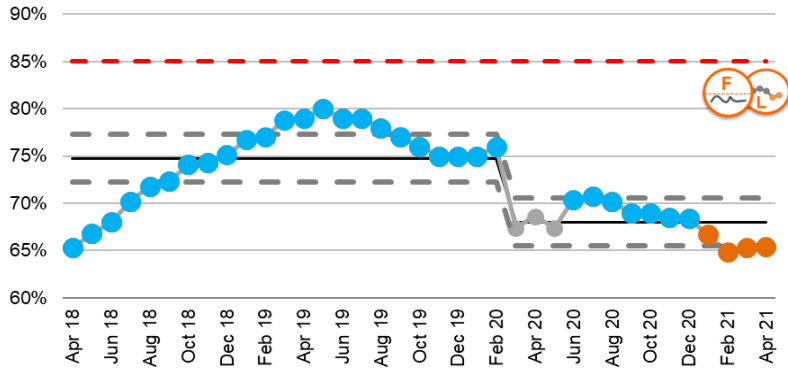
Chart markers (dots)

- orange = area of concern
- grey = within expected limits
- blue = area of improvement

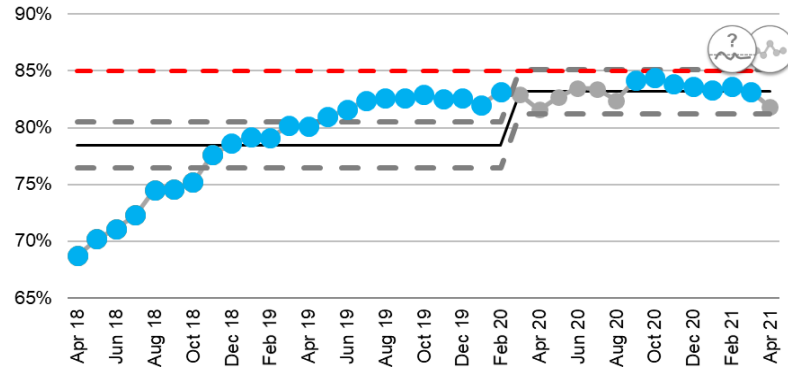


Workforce

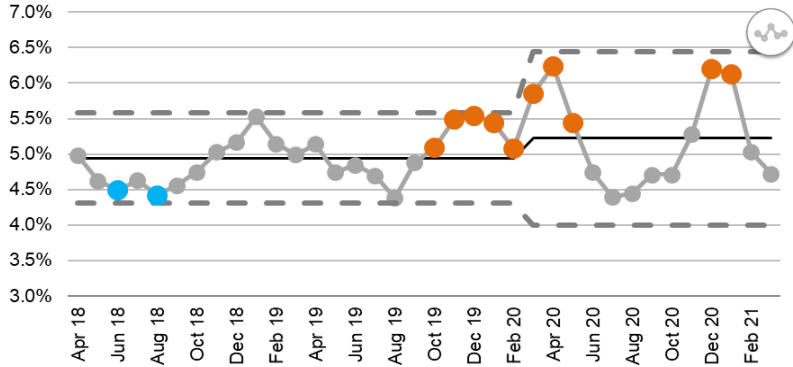
Staff who have had a PADR in the previous 12 months



Core Skills Training Framework



Sickness absence in month (reduction target)



KEY

Chart icons

Variation			Assurance		
Special Cause Concerning variation	Special Cause Improving variation	Common Cause variation	Consistently hit target	Hit and miss target subject to random variation	Consistently fail target

Chart markers (dots)

- orange = area of concern
- grey = within expected limits
- blue = area of improvement