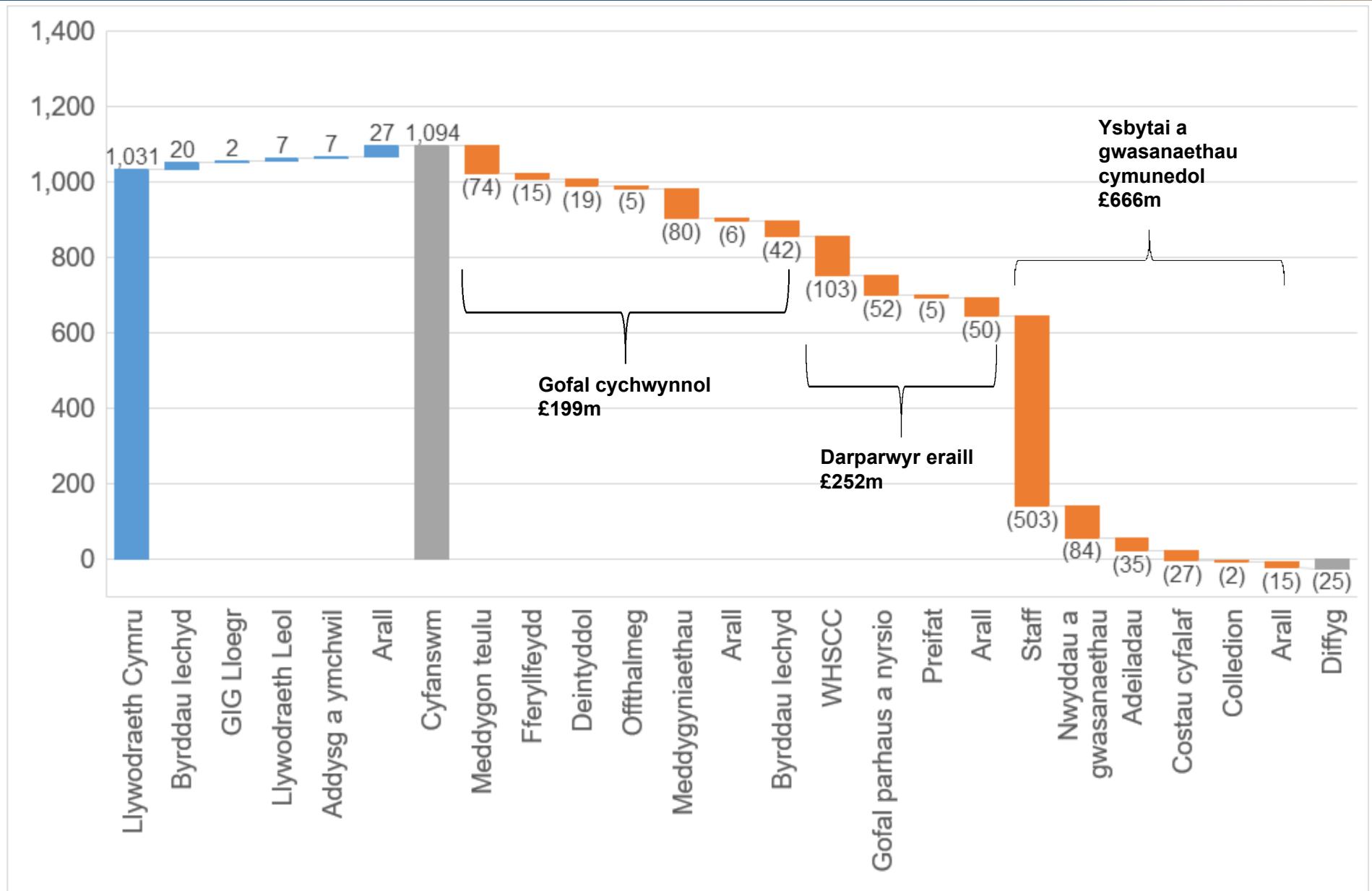


Trosolwg Ariannol 2020/21

- Gwariant o £1,118m dros y flwyddyn
- £1,031m o gyllid o'r Llywodraeth a £63m o incwm lleol
- Diffyg ariannol o £24.9m (o'i gymharu a chynllun o £25m)
- Lleihad o £10m o'r diffyg yn 2019/20

Targed	2020/21	2019/20	2018/19
Target statudol			
Cynllun tymor canolig integredig wedi'i gymeradwyo	x	x	x
Cyfanswm gwariant dros tair mlynedd heb fod yn fwy na chyfanswm y cyllid (£'000)	(95,291)	(139,811)	(154,481)
Gwariant cyfalaf o fewn y terfyn gwariant	✓	✓	✓
Y cyfrifon statudol yn rhoi golwg gwir a theg o'r sefyllfa	✓	✓	✓
Target gweinyddol			
Gwariant refeniw o fewn y terfyn gwariant blynyddol (£'000)	(24,910)	(34,943)	(35,438)
Talu isafswm o 95% o chredydwyr tu allan i'r GIG o fewn 30 diwrnod o dderbyn nwyddau / taleb.	95.3%	96.1%	96.1%
Arian parod ar ddiwedd y flwyddyn i'w gadw o fewn 5% o'r llif arian misol o'r Llywodraeth	** ✓	** ✓	** ✓





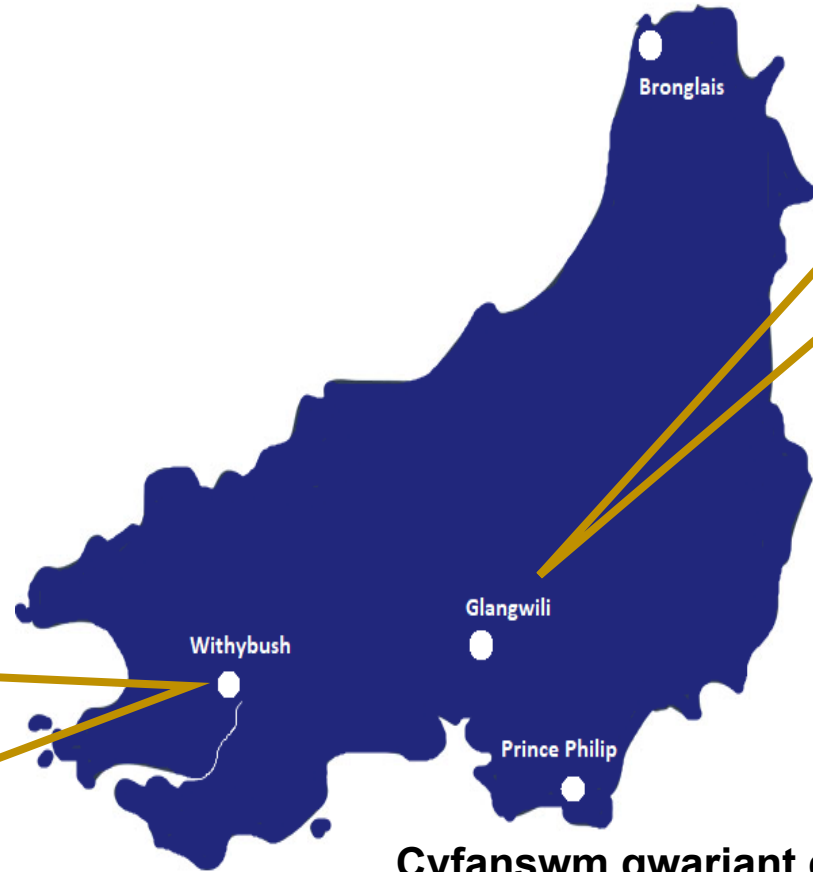
COVID-19 £12.580m



Merched a Phlant, Ffês II
£6.848m



Delweddu cyseiniant magnetig WGH
£0.814m



Cydymffurfio â Thôn GGH & WGH
£1.089m

Cyfanswm gwariant cyfalaf £34.845

- Rhaglwn traws-Gymru, £26.6m
- Cyfalaf dewisol, £8.3m

Effaith ariannol COVID-19

Cafodd y Bwrdd Iechyd ddyraniad cyllid refeniw o £1.031 biliwn gan Lywodraeth Cymru (LIC) yn 2020-21; o hyn, roedd £116 miliwn mewn ymateb i bandemig COVID-19 (2019-20, £2.6 miliwn). Rhan allweddol o'n hymateb i'r pandemig oedd dargyfeirio cyfrannau o'n cyllidebau craidd ar gyfer gwasanaethau i gyflawni'r blaenoriaethau gweithredol; nid yw'r gost o ddargyfeirio'r adnoddau hyn wedi'i chynnwys isod, sy'n cynrychioli costau ychwanegol uniongyrchol yn unig.

Costau ychwanegol yn deillio o'r pandemig	Cyfanswm £'m	Arall £'m	Cyflog £'m	Costau nad ydynt yn gyflog £'m
Safleoedd presennol	83.8	24.8	26.4	32.6
Ysbytai Maes	22.1	-	1.1	21.0
Peidio â chyflawni arbedion	30.8	30.8	-	-
Cyfarpar diogelu personol (gan gynnwys cost yr hyn a ariennir yn uniongyrchol gan LIC)	5.2	-	-	5.2
Profi Olrhain Diogelu	4.2	-	0.7	3.5
Rhaglen brechu torfol COVID-19	2.8	-	0.8	2.0
Brechiadau Ffliw Estynedig	0.6	-	-	0.6
Gwasanaethau hanfodol ar gontract allanol (wedi'u hariannu'n uniongyrchol gan LIC)	5.5	-	-	5.5
Cyfanswm	155.0	55.6	29.0	70.4

Gwasanaethau i'n preswylwyr sydd fel arfer yn cael eu darparu gan Fyrddau Iechyd eraill yng Nghymru o dan Drefniadau Hirdymor

Er mwyn cefnogi GIG Cymru yn ystod pandemig COVID-19, cafwyd cytundeb unochrog rhwng Byrddau Iechyd Cymru i atal y Cytundebau Hirdymor yn 2020-21. Roedd hwn yn ddull pragmatig o gefnogi ymrwymadau cytundebol y cytunwyd arnynt, sef cefnogi'r llif arian a ymrwymwyd rhwng sefydliadau o fewn eu priod Gynlluniau. Amcangyfrifir bod hyn wedi costio £11 miliwn o gymharu â'r gweithgarwch yn 2019-20.

Adding value. Today. Tomorrow. Together.
Creu gwerth gyda'n gilydd. Heddiw ac i'r dyfodol.



Digidol a TG: £1.9 miliwn

152 o iPads ar gyfer cleifion

350 o ffonau clyfar

571 o liniaduron

Cebiau rhwydwaith sylweddol

262 o fonitorau

Newidiadau i'n safleoedd presennol i alluogi'r broses o gadw pellter cymdeithasol

Ystadau: £0.7 miliwn




Cyfarpar yr Ysbytai Maes: £3.6 miliwn

680 o welyau

500 o grynodwyr ocsigen

532 o droliâu

985 o sgriniau rhannu

8 system uwchsain

3 system ddihalogi

Cyfarpar Safleoedd Acíwt £5.1 miliwn



200 o beiriannau monitro arwyddion bywyd

138 o beiriannau anadlu

656 o welyau



Ffrydio Adrannau Achosion Brys: £0.7 miliwn

4 adeilad dros dro

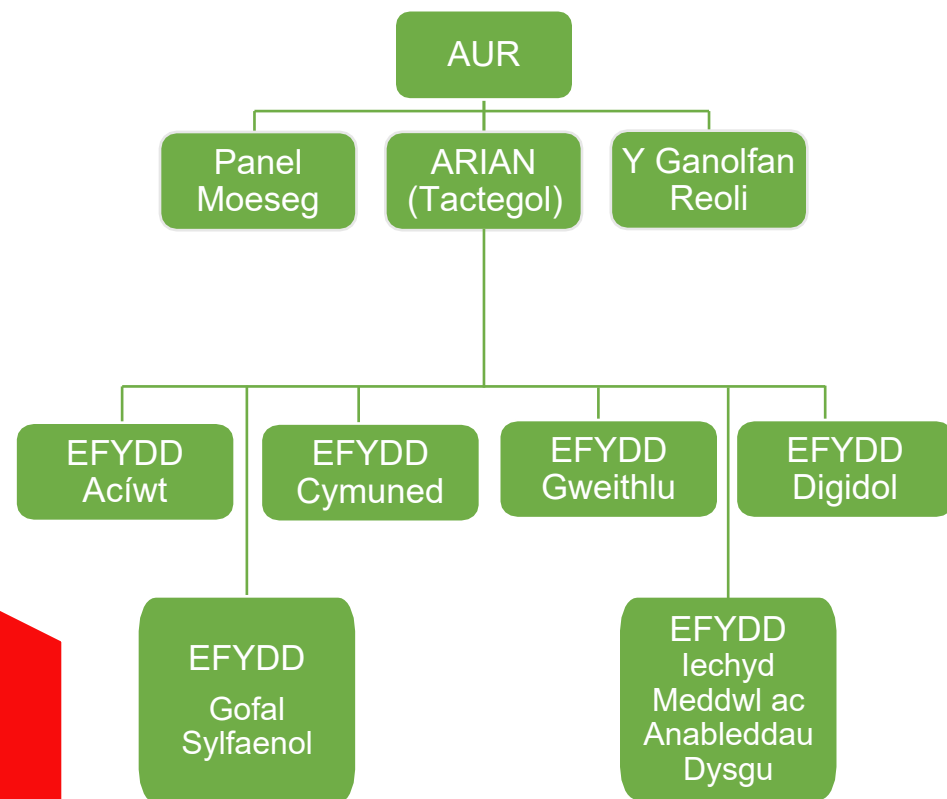
Arall £0.3 miliv





Roedd angen i ni gydbwysu penderfyniadau gweithredol brys i reoli anghenion cleifion difrifol wael wrth ryddhau neu adleoli cleifion eraill o safleoedd aciwt, â chymhwyso lefel briodol o lywodraethu o ran arian cyhoeddus.

Sefydlwyd strwythur gorchymyn newydd mewn ymateb i'r her hon.



Costau ychwanegol yn deillio o'r pandemig	Cyfanswm £'m	Darpariaeth £'m	Cyflog £'m	Costau nad ydynt yn gyflog £'m
Safleoedd presennol	83.8	24.8	26.4	32.6

- Er mwyn staffio ein gwasanaethau ni ddefnyddiodd ein staff eu holl hawliau Gwyliau Blynyddol ac ni allai ein staff meddygol gymryd eu holl hawl i wyliau astudio (darpariaeth Trosglwyddo Gwyliau Blynyddol £12.0 miliwn, Absenoldeb Astudiaeth Feddygol £1.5 miliwn);
- Cyhoeddodd LIC fonws o £500 yr aelod staff i gydnabod eu hymateb i'r pandemig (£11.3 miliwn).

- Cyflogwyd staff cyfnod penodol i gynyddu'r gallu (368 WTE ar gyfartaledd, uchafbwynt o 515 WTE) (£10.1 miliwn);
- Costau ychwanegol staff presennol naill ai oherwydd cyfraddau tâl premiwm neu oriau ychwanegol a weithiwyd £8.9 miliwn (Nyrsio £2.3 miliwn, Meddygol £2.7 miliwn, Gweithwyr Cymorth Gofal Iechyd £2.3 miliwn, Ystadau £1.1 miliwn);
- Staff asiantaeth £5.4 miliwn (Nyrsio £3.4 miliwn, Meddygol £1.6 miliwn);
- Myfyrwyr Nyrsio wedi'u cynnwys yn gynnar £1.6 miliwn, Myfyrwyr eraill £0.4 miliwn.

Cafodd 2,674 o ymgeiswyr (o blith 4,723 o ymgeiswyr) gyfweiliad, a phenodwyd 2,040

- Presgripsiynu £4.7 miliwn;
- Costau cyfarpar £4.9 miliwn;
- Nwyddau traul deunyddiau a chyfarpar meddygol £2.9 miliwn;
- Gofal Iechyd Parhaus (premiwm rhyddhau carlam) £1.1 miliwn a Chymorth Darparwr Gofal Cymdeithasol i Oedolion £3.5 miliwn;
- Contract deintyddol costau pasio trwodd £2.8 miliwn;
- Colli incwm Gweithgarwch heb Gontract £2.0 miliwn;
- Cyffuriau a Nwyon Meddygol £1.4 miliwn;
- Optimeiddio Llif Cleifion £1.2 miliwn.



Uchafswm y gwelyau oedd ar gael 915 tan fis Gorffennaf 2020; gan ostwng i 459. Y galw uchaf oedd 42 o welyau.

Sir Gaerfyrddin

- Canolfan Hamdden Caerfyrddin
- Selwyn Samuel
- Stadiwm Parc y Scarlets
- Ysgubor Parc y Scarlets
- Canolfan Hamdden Llanelli

Sir Benfro

- Bluestone

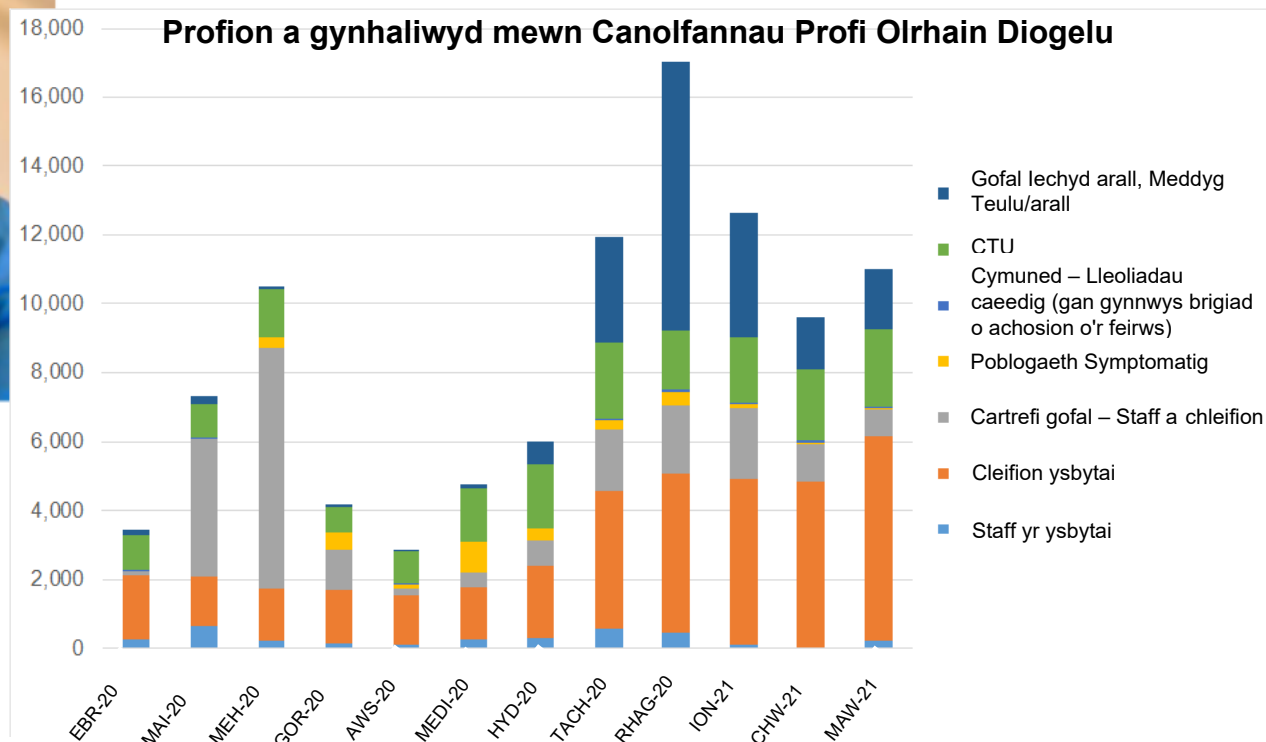
Ceredigion

- Canolfan Hamdden Aberteifi
- Ysgol Penweddig
- Plas Crug

- Colledion canlyniadol £6.9 miliwn;
- Costau sefydlu £6.5 miliwn;
- Costau adfer £3.6 miliwn;
- Diogelwch, rheoli safleoedd, cyfarpar a llogi gwelyau £2.4 miliwn;
- Talu costau rhedeg £1.1 miliwn;
- Costau rhedeg eraill £0.7 miliwn;
- Rhent, cyfraddau a chyfleustodau £0.9 miliwn.



Adding value. Today. Tomorrow. Together.
Creu gwerth gyda'n gilydd. Heddiw ac i'r dyfodol.



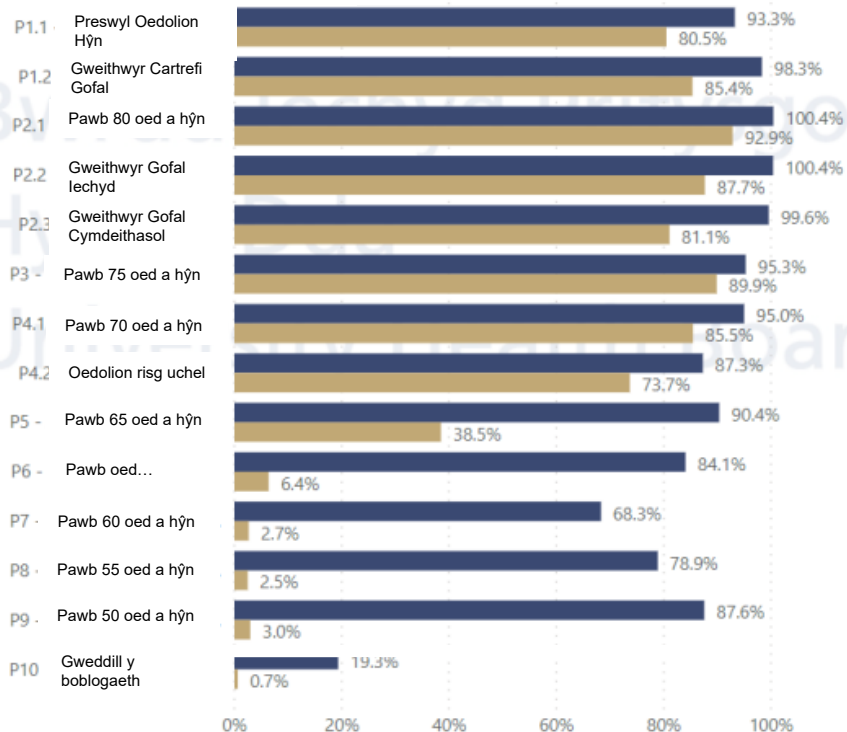
Cynhaliwyd mwy o brofion ar safleoedd aciwt presennol, ac ymgorfforwyd y gost mewn cyllidebau craidd.

Hwyluswyd y broses olrhain mewn cydweithrediad a phartneriaeth â'n Hawdurdodau Lleol (ALI), gyda'r ALI yn rheoli £3 miliwn o'n gwariant.

4 canolfan profi cymunedol bwrpasol wedi'u sefydlu ar draws ein siroedd gyda gwasanaeth profi drwy ffenest y car.

Y Nifer sydd wedi cael y brechiad yn y Grŵp Blaenoriaeth

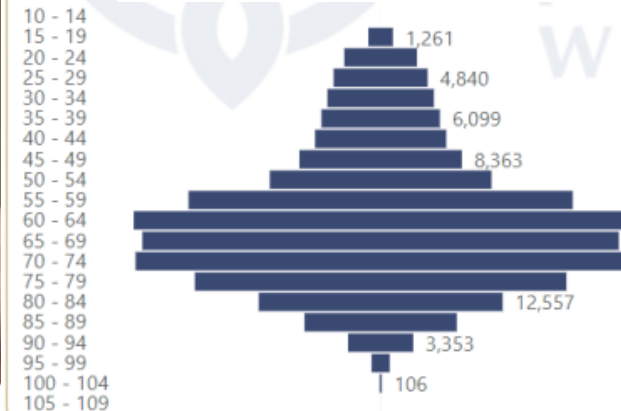
● Y Nifer sydd wedi cael y Dos Cyntaf
● Y Nifer sydd wedi cael yr Ail Ddos



Y Nifer sydd wedi cael y Dos Cyntaf a'r Nifer sydd wedi cael yr Ail Ddos

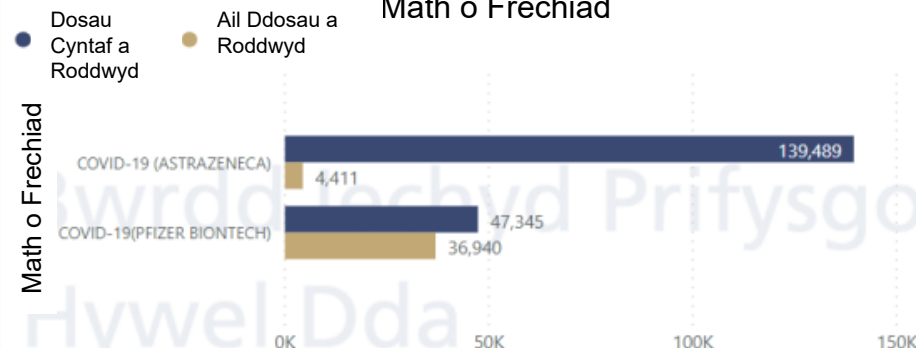


Band Oedran (Dosau Cyntaf)



Yn ychwanegol at y £2.8 miliwn o gostau yr aethpwyd iddynt, mae'r Bwrdd Iechyd wedi cael oddeutu £1.7 miliwn o frechlynnau 'yn rhad ac am ddim'.

Math o Frechiad

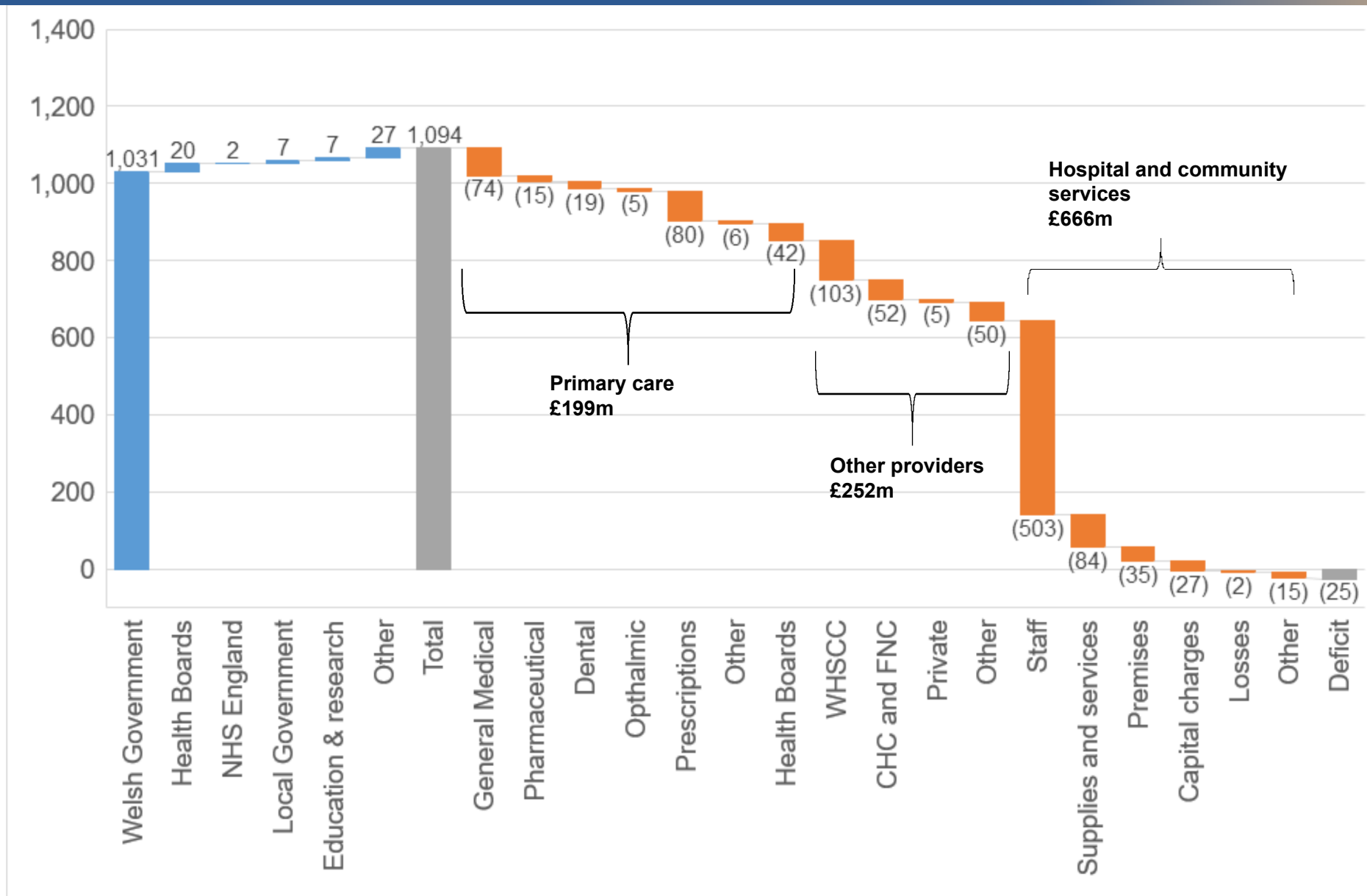


- Y trydydd flwyddyn yn olynnol i'r diffyg lleihau
- Diolch i'n staff, partneriaid, gwirfoddolwyr, cleifion a'r cyhoedd
- 2021/22 yn flwyddyn heriol
- Angen lleihau'r diffyg unwaith eto i fyw o fewn ein cyllid dros y tair mlynedd nesa
- Cydweithio gyda phartneriaid ar draws y sector gyhoeddus yn hollbwysig

Financial Overview 2020/21

- Expenditure of £1,118m for the year
- £1,031m budget from Welsh Government and £63m of local income
- Annual deficit of £24.9m (against a plan of £25m)
- Reduction of £10m from the deficit recorded for 2019/20

Target	2020/21	2019/20	2018/19
Statutory target			
Approved integrated medium term plan	✘	✘	✘
Aggregate expenditure does not exceed the aggregate of funding over a 3 year period (£'000)	(95,291)	(139,811)	(154,481)
Net capital spend is contained within the capital resource limit	✓	✓	✓
The statutory annual accounts give a true and fair view	✓	✓	✓
Administrative target			
Revenue expenditure contained within the revenue resource limit (£'000)	(24,910)	(34,943)	(35,438)
To pay a minimum of 95% of all non NHS creditors within 30 days of receipt of goods / invoice.	95.3%	96.1%	96.1%
Cash balance held by the Health Board to not exceed 5% of monthly cash draw down from Welsh Government.	** ✓	** ✓	** ✓





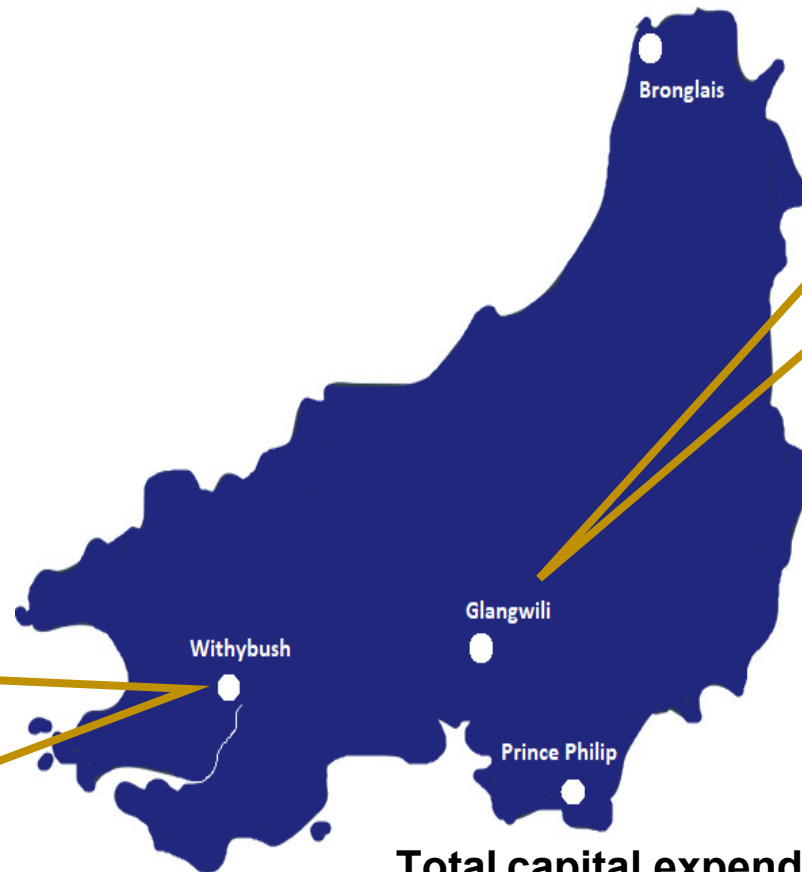
COVID-19 £12.580m



Women & Children Phase II £6.848m



WGH MRI £0.814m



Fire Compliance GGH & WGH £1.089m

Total capital expenditure £34.845

- All Wales Capital Programme, £26.6m
- Discretionary capital, £8.3m

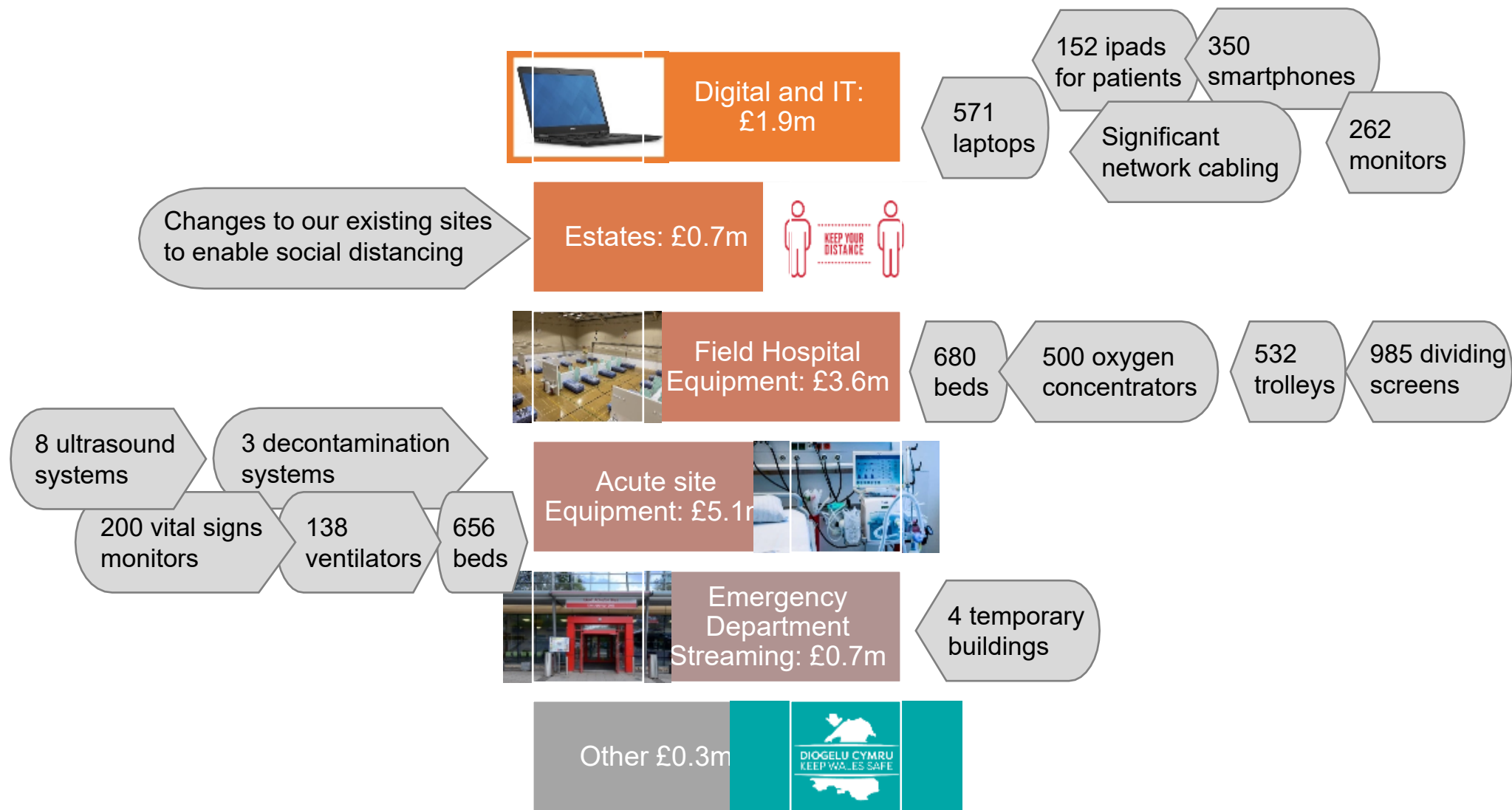
The financial impact of COVID-19

As a Health Board, we received a revenue funding allocation of £1.031bn from Welsh Government (WG) in 2020/21; of this, £116m was in response to the COVID-19 pandemic (2019/20, £2.6m). A key part of our response to the pandemic was to divert proportions of our core budgets for services to meet the operational priorities; the cost of diverting these resources is not included below, which represents direct additional costs only.

Additional costs arising from the pandemic	Total £'m	Other £'m	Pay £'m	Non-Pay £'m
Existing sites	83.8	24.8	26.4	32.6
Field Hospitals	22.1	-	1.1	21.0
Non-delivery of savings	30.8	30.8	-	-
PPE (including cost of that funded directly by WG)	5.2	-	-	5.2
Test, Trace, Protect	4.2	-	0.7	3.5
COVID-19 mass vaccination programme	2.8	-	0.8	2.0
Extended Flu vaccinations	0.6	-	-	0.6
Outsourced essential services (funded directly by WG)	5.5	-	-	5.5
Total	155.0	55.6	29.0	70.4

Services for our residents normally delivered by other Health Boards in Wales under Long Term Arrangements

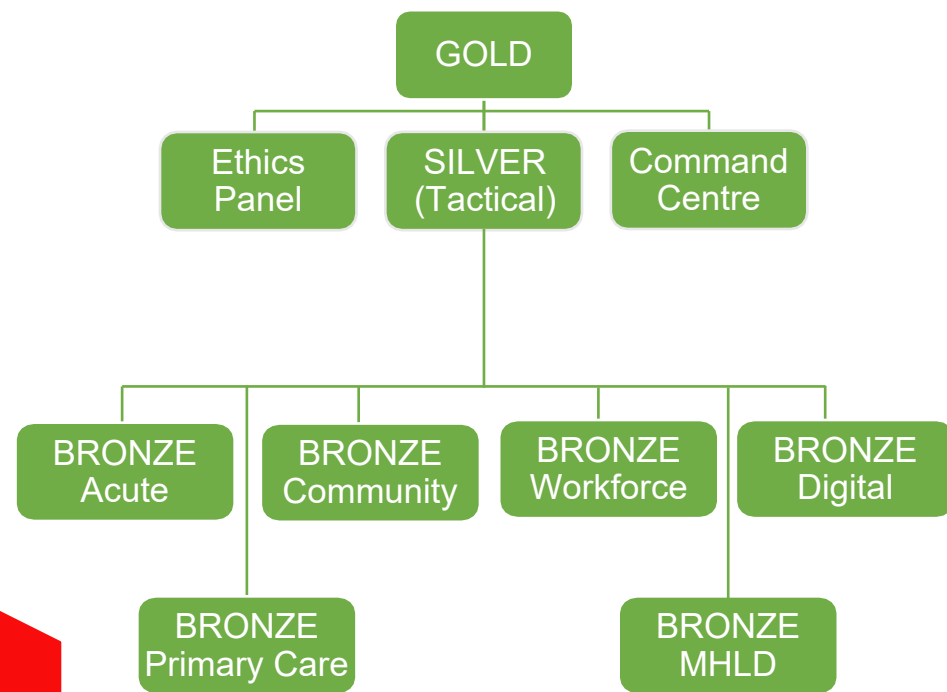
In order to support the Welsh NHS during the COVID-19 pandemic, there was unilateral agreement between Welsh Health Boards to block the Long Term Agreements (LTAs) in 20/21. This was a pragmatic approach to support agreed contractual undertakings, namely supporting the cash flow committed between organisations within their respective Plans. This is estimated to have cost £11m compared to activity in 2019/20.





We needed to balance urgent operational decisions to manage the needs of acutely unwell patients whilst discharging or relocating other patients from acute sites, with applying an appropriate level of governance of public money.

We set up a new Command structure in response to this challenge.



Existing sites: £83.8m in 2020/21

Additional costs arising from the pandemic	Total £'m	Provision £'m	Pay £'m	Non-Pay £'m
Existing sites	83.8	24.8	26.4	32.6

- To staff our services our staff did not use all of their Annual Leave entitlements and our medical staff could not take all of their study leave entitlement (Annual Leave Carryover provision £12.0m, Medical Study Leave £1.5m);
- WG announced a bonus of £500 per staff member in recognition of their response to the pandemic (£11.3m).

- Fixed term staff employed to increase capacity (average 368 WTE, peak of 515 WTE) (£10.1m);
- Existing staff additional costs either due to premium rates of pay or additional hours worked £8.9m (Nursing £2.3m, Medical £2.7m, HCSW £2.3m, Estates £1.1m);
- Agency staff £5.4m (Nursing £3.4m, Medical £1.6m);
- Student Nurses early on-board £1.6m, other Students £0.4m.

We interviewed 2,674 candidates (out of 4,723 applicants), and appointed 2,040

- Prescribing £4.7m;
- Equipment costs £4.9m;
- M&SE consumables £2.9m;
- CHC (accelerated discharge premium) £1.1m and Adult Social Care Provider Support £3.5m;
- Dental contract pass-through costs £2.8m;
- Loss of Non-Contracted Activity income £2.0m;
- Drugs and Medical Gases £1.4m;
- Patient Flow Optimisation £1.2m.



Maximum available beds 915 until July 2020;
reducing to 459. Peak use 42 beds.

Carmarthenshire

- Carmarthen Leisure Centre
- Selwyn Samuel
- Parc Y Scarlets Stadium
- Parc Y Scarlets Barn
- Llanelli Leisure Centre

Pembrokeshire

- Bluestone

Ceredigion

- Cardigan Leisure Centre
- Penweddig School
- Plas Crug

- Consequential losses £6.9m;
- Set up costs £6.5m;
- Restoration costs £3.6m;
- Security, site management, equipment and bed hire £2.4m;
- Pay running costs £1.1m;
- Other running costs £0.7m;
- Rent, rates and utilities £0.9m.

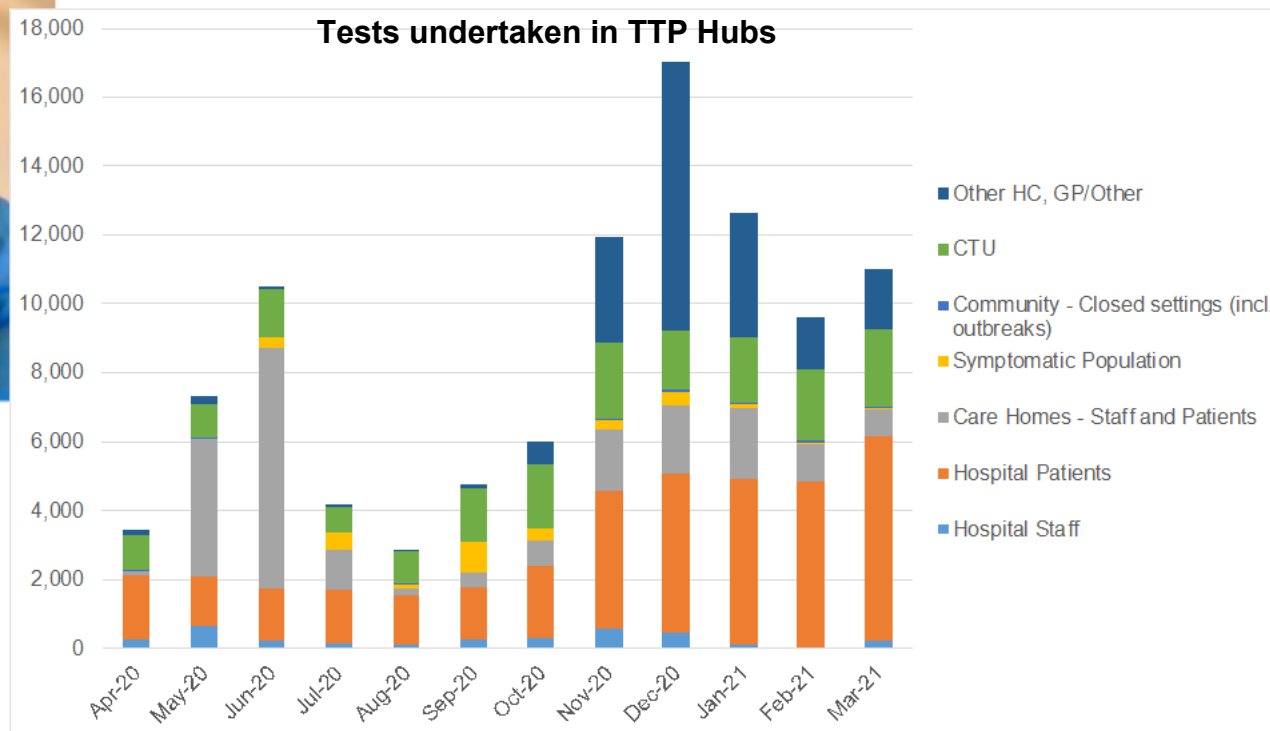


Adding value. Today. Tomorrow. Together.
Creu gwerth gyda'n gilydd. Heddiw ac i'r dyfodol.



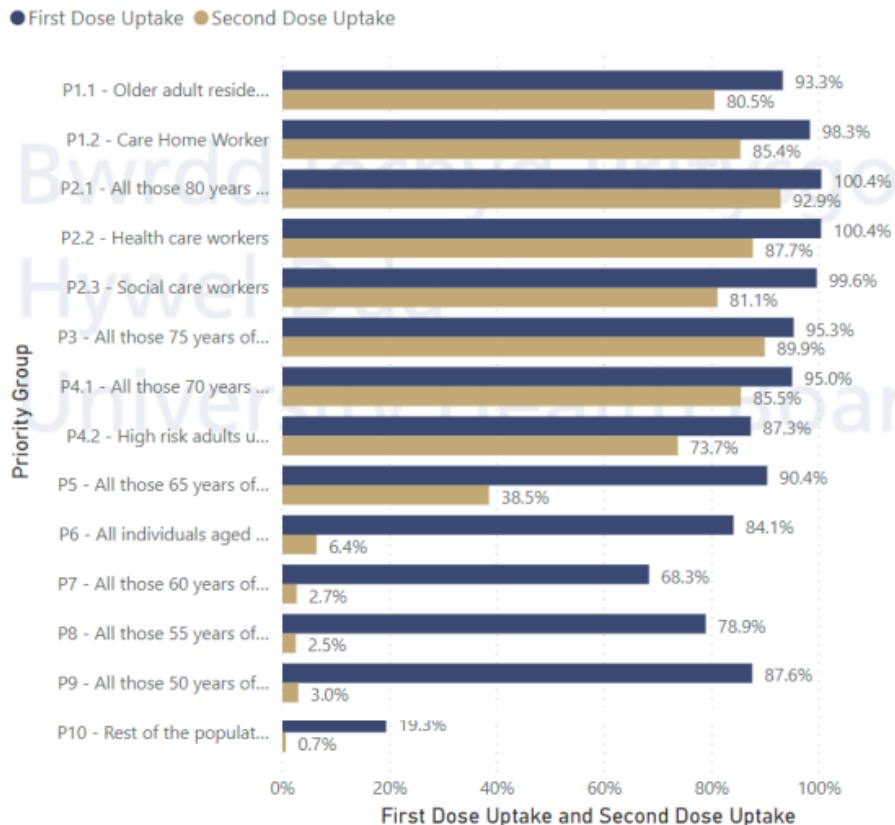
Further testing was conducted in existing acute sites, the cost of which was absorbed in core budgets.

Tracing was facilitated in collaboration with our Local Authority (LA) partners, with LAs managing £3m of our expenditure.

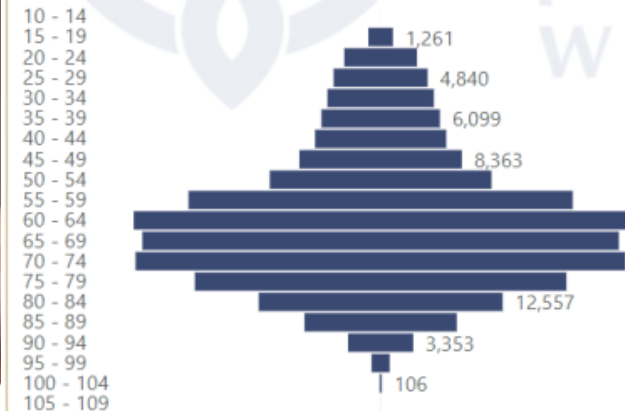


4 dedicated community testing hubs set up across our counties with a drive through service.

Priority Group Uptake

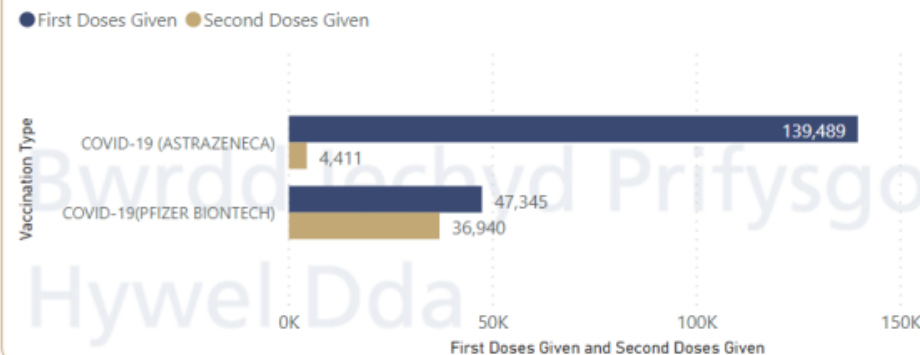


Age Band (First Doses)



In addition to the £2.8m of costs incurred, the Health Board has received approximately £1.7m of vaccines 'free of charge'.

Vaccination Type



- Further reduction to our deficit
- With thanks to our staff, partners, volunteers, patients and the public
- Challenging outlook for 2021/22
- Focus on delivering a further reduced deficit in 2021/22 to reach sustainable breakeven over the coming planning cycle
- Working with partners across the public sector critical