

Hywel Dda University Health Board

A Healthier  
Mid and  
West Wales

Our future generations  
living well

# Pharmaceutical Needs Assessment

*(Final version to be published in October 2021)*

**Summary Document & Survey for consultation**



GIG  
CYMRU  
NHS  
WALES

Bwrdd Iechyd Prifysgol  
Hywel Dda  
University Health Board



Diogel  
Safe



Cynaliadwy  
Sustainable



Hygyrch  
Accessible



Caredig  
Kind



## Public consultation: Begins on 14<sup>th</sup> April 2021

### Submit your views by midnight on 12<sup>th</sup> June 2021

This document summarises the full draft Hywel Dda University Health Board (UHB) Pharmaceutical Needs Assessment (PNA). It aims to cover the key points from the PNA to help you answer the questions in the public consultation.

*For full details of the Draft PNA you can access the document at [\[Web-link\]](#)*

## Introduction

A PNA is a legal document which all Health Boards in Wales must produce by 1<sup>st</sup> October 2021 to set out the need and gaps in pharmaceutical services within its area. The requirement to produce a PNA is directed in The National Health Service (Pharmaceutical Services) (Wales) Regulations 2020.

The purpose of the Pharmaceutical Needs Assessment (PNA) is to:

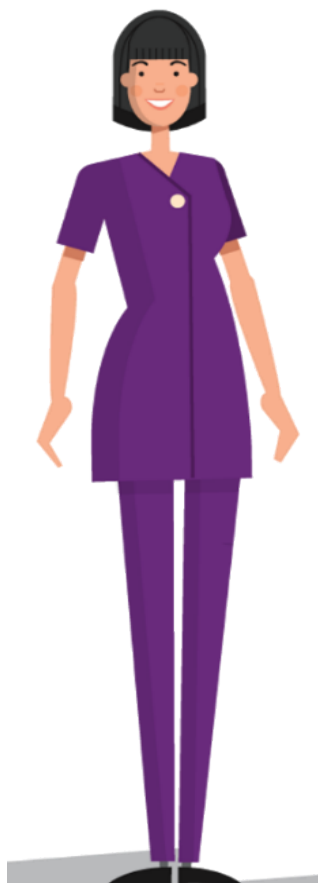
- ▶ **Set out pharmaceutical services currently available in the community**
- ▶ **Assess the need for pharmaceutical services in the future**
- ▶ **Identify any gaps in current service**
- ▶ **Inform decision making about applications to provide pharmacy services**

## PNA Consultation

The PNA has reached a stage where the draft version can be consulted on. The PNA is subject to a 60 day statutory consultation period which will run from 14<sup>th</sup> April to 12<sup>th</sup> June 2021. The Health Board is required to consult with a range of different organisations (see end of document). Responses are also welcomed from members of the public.

The PNA is a large comprehensive document and provides;

- Information on the regulatory framework for pharmaceutical services
- Views gathered during a public survey conducted mid-November to mid-December 2020
- Information obtained from pharmacy contractors and dispensing GP practices
- The demographic characteristics of the population and their health needs
- Current provision of pharmaceutical services within Hywel Dda UHB
- A review of pharmaceutical services provided in each of the 7 localities which the Health Board area is divided into
- Conclusions on the evidence provided for the PNA document



The PNA sets out the pharmaceutical services offered on a locality basis. These localities match the boundaries of the 7 Primary Care Clusters within Hywel Dda UHB and are sub-divisions of each of the counties:

#### Carmarthenshire

- Amman Gwendraeth
- Llanelli
- Tywi Taf

#### Pembrokeshire

- North Pembrokeshire
- South Pembrokeshire

#### Ceredigion

- North Ceredigion
- South Ceredigion

For information about the pharmacy provision in each locality, you can look at sections 8 - 14 in the full PNA.

A summary of the full PNA document is set out in this consultation document.

## Pharmaceutical Services

Pharmaceutical services are defined by reference to the NHS regulations for community pharmacies, dispensing GP practices and appliance contractors.

## Community Pharmacies

There are three tiers of community pharmacy services:

- *Essential services* – services which every community pharmacy providing NHS pharmaceutical services must provide. These include; the dispensing of medicines, promotion of healthy lifestyles, support for self-care and disposal of unwanted patient medication
- *Advanced services* – services that all community pharmacy contractors and dispensing appliance contractors can provide subject to specific accreditation and facilities. These are currently Medicines Use Reviews, Discharge Medicines Reviews, Appliance Use Reviews and the Stoma Appliance Customisation Service
- *Enhanced services* – services that are National (Wales) or which are locally commissioned.



## Dispensing GP Practices

Dispensing GP practices help to provide pharmacy services in very rural areas where it might be difficult for patients to get to a pharmacy.

6 of the 48 GP practices in Hywel Dda UHB have consent to dispense medication to certain patients.

To be eligible for dispensing services, patients must meet certain criteria. Briefly, an eligible patient is one that:

- ▶ Lives in a “controlled locality” – area which has been determined by the Health Board, as rural in character, and
- ▶ Is more than 1.6km / 1 mile from a pharmacy – measured as a straight line

There is also an option, for a patient to claim to have serious difficulty in accessing pharmaceutical services, which the Health Board can be asked to consider, where the “controlled locality” and distance from a pharmacy don’t apply.

There are no appliance contractors within Hywel Dda UHB.

## Locations of Pharmacies and Dispensing GP Practices

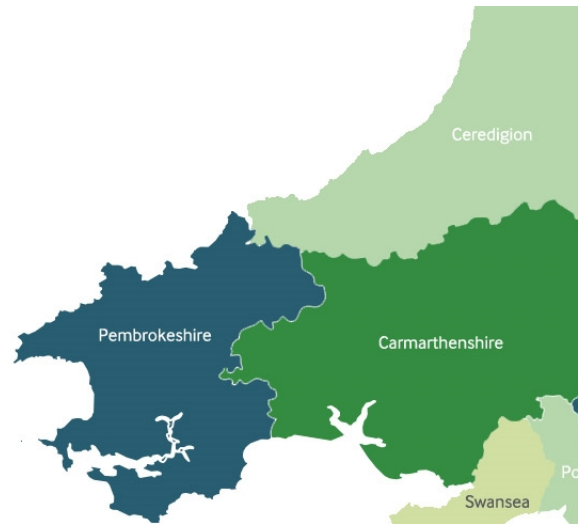
There are 98 community pharmacies and 6 dispensing GP practices within Hywel Dda UHB. The number of pharmacies and dispensing practices by county is shown in the table below.

County	Community Pharmacies	Dispensing GP Practices
Carmarthenshire	49	2
Pembrokeshire	30	3
Ceredigion	19	1

This can be further broken down into localities.

Locality	Community Pharmacies	Dispensing GP Practices
Amman Gwendraeth	16	0
Llanelli	17	0
Tywi Taf	13	2
North Pembrokeshire	17	2
South Pembrokeshire	13	1
North Ceredigion	9	1
South Ceredigion	13	0

For the purpose of allocating pharmacies into a locality they are apportioned on the basis of the GP practice they serve rather than their actual address e.g. there are 2 pharmacies in Newcastle Emlyn, which geographically are within Carmarthenshire, but for the purposes of inclusion in a primary care locality, they are included within South Ceredigion, as they serve the registered patient list of Meddygfa Emlyn, which is within South Ceredigion. This applies to a small number of pharmacies that are located very close to a county border.



Therefore the number of pharmacies in the combined North and South Ceredigion localities will not match the number of pharmacies identified in Ceredigion County. The numbers listed by county reflects the address of the pharmacy.

Hywel Dda UHB has a population of 387,284. There are 98 pharmacies serving the population, which provides a ratio of 2.53 pharmacies per 10,000 population. This is higher than the average for Wales which is around 2.26.

When calculating the ratio of pharmacies per 10,000 population for each locality, it highlights that the locality with the highest ratio of pharmacies is South Ceredigion at 2.76, closely followed by Llanelli at 2.74 per 10,000 population. The lowest ratio is found in North Ceredigion at 1.96 pharmacies.

## Opening Hours of Pharmacies and Dispensing GP practices

Pharmacies are open at varying times, but would be expected to provide at least 40 hours of opening each week, unless a lesser number of hours had been agreed, e.g. where a pharmacy serves a branch surgery. For the purposes of the PNA, normal opening times for a pharmacy have been defined as 9.00am to 5.30pm Monday to Friday.

- **82 of the 98 pharmacies are open during these defined opening times. This increases to 85, if the 3 pharmacies that close for a ½ day one day of the week are included.**



Although normal opening times have been defined over weekdays, many pharmacies also open on Saturdays.

- **63 of the 98 pharmacies open on Saturdays, of which**
  - **33 open for ½ day and**
  - **30 for the whole day**

Access to pharmaceutical services on Sundays is more limited, but there are a small number of pharmacies open across each of the counties.

HDUHB: PNA Summary document



- **11 of the 98 pharmacies open on Sundays. Opening times are usually 10.00am–4.00pm or 10.30am–4.30pm**
  - **6 of these are in Carmarthenshire**
  - **3 in Pembrokeshire and**
  - **2 in Ceredigion**

There is also a 1 hour rota arrangement in place in South Ceredigion whereby one of the two pharmacies in Llandysul opens between 4.00pm and 5.00pm on Sundays.

The 6 dispensing GP practices operate dispensaries over 8 locations.

Where these dispensaries are at main surgery sites, dispensing services are available between 8.00/8.30am to 6.00/6.30pm, on all or most weekdays. This applies to 5 of the 8 locations. The remaining 3 sites are located in branch surgeries and offer less opening hours which reflect the part-time hours of the branch site.

## Services Provided by Pharmacies and Dispensing GP Practices, Essential Services

All the pharmacies and dispensing GP practices in Hywel Dda UHB provide “essential” services. These include: dispensing drugs, repeat dispensing, ensuring professional standards (clinical governance) and checking patient views, promoting healthy lifestyles, providing a place to return unwanted medicines, signposting people to other services and supporting people to care for themselves.

The main essential pharmaceutical service is the dispensing of prescriptions.

During 2019/20, GP practices in Hywel Dda UHB prescribed 10,410,784 items.

- **Community pharmacies dispensed 9,838,887 items (94.5%)**
- **Dispensing GP practices dispensed 447,267 items (4.3%)**
- **Items personally administered by GPs accounted for 124,630 e.g. vaccinations, contraceptive devices**

Community pharmacies provide advanced services and a range of enhanced services which are over and above the usual dispensing services that most of the public will be familiar with.

## Advanced Services

Pharmacies can provide “advanced” services in addition to the essential services. The advanced services that can be provided are:

- **Medicines Use Review** – to support patients in understanding the use of their medication and improve their knowledge and compliance
- **Discharge Medicines Review** – to support patients who have been discharged recently from a care setting by ensuring that changes to medication are followed through into the community



- Stoma Customisation – to make sure that people’s stoma appliance is comfortable based on their measurements
- Appliance Review – to improve the patient’s knowledge of any appliance they require

In order to provide Medicines Use Reviews, a pharmacy must have a private consultation area, where a patient and the pharmacist can sit and speak without being overheard.

Of the 98 pharmacies in Hywel Dda UHB:

- ▶ 97 offer Medicines Use Reviews (currently suspended due to the COVID-19 pandemic)
- ▶ 97 offer Discharge Medicines Review
- ▶ None offer Stoma Customisation (provided by a nurse led service in Hywel Dda UHB)
- ▶ None offer Appliance Reviews

## Enhanced Services

Enhanced services refers to either National (Wales) or local NHS services that are commissioned from pharmacies to meet the needs of the population. There are a wide range of enhanced services that are offered by Hywel Dda UHB community pharmacies. The main National enhanced services are:

- **Common Ailments Service** – advice and free treatment on up to 27 common conditions. The 98 pharmacies in Hywel Dda UHB offer this service.
- **Emergency Medication Supply** – provides for the urgent supply of prescribed repeat medication, where a patient is unable to obtain a supply via other means before they run out of medication. 97 pharmacies in Hywel Dda UHB offer this service.
- **Emergency Contraception (morning after pill)** – allows a supply of the morning after pill if appropriate following a consultation for females aged 13 and above. 79 pharmacies in Hywel Dda UHB offer this service. The aim would be to have this service available in every pharmacy to improve accessibility.
- **Influenza Vaccination** – this service is seasonal and usually operates from October through to March. 80 pharmacies in Hywel Dda UHB offered this service in 2020/21. The aim would be to have this service available in every pharmacy to improve accessibility.
- **Substance Misuse Services** – there are two substance misuse services; a Needle Exchange service and a Supervised Administration of Medicines service. In Hywel Dda UHB, 43 pharmacies provide a Needle Exchange service and 75 undertake Supervised Administration of Medicines.
- **Smoking Cessation** – there are two levels of Smoking Cessation service offered by pharmacies. Level 2 is a supply only service which provides free nicotine replacement therapy (NRT) following assessment by a Smoking Cessation Advisor. Level 3 is a one stop service which includes both the supply of NRT and counselling sessions via a pharmacy. In Hywel Dda UHB, 76 pharmacies offer Level 2 and 69 pharmacies offer Level 3. Smoking Cessation services within Hywel Dda UHB do not include the supply of Champix® (varenicline). The aim would be to have this service available in every pharmacy to improve accessibility.



- **Just in Case packs** – Pharmacies can supply packs which contain specific palliative care medication which can be stored in a patient's home. These are issued via a GP prescription in cases where an individual may need immediate access to these drugs at a time when pharmacies would not be open. 88 pharmacies in Hywel Dda UHB offer this service.
- **Patient Sharps** – allows for the safe disposal of sharps boxes up to 5 litres in size via pharmacies. 93 pharmacies within Hywel Dda UHB offer this service. The aim would be to have this service available in every pharmacy to improve accessibility.
- **Independent Prescribing Services** – Independent Prescribing pharmacists are able to provide consultations and prescribe medication in their area of expertise. There are currently 4 pharmacists in Hywel Dda UHB that provide consultations on either Acute Conditions or Contraceptive Services. The range of conditions and number of pharmacy sites will increase over the next 5 years, as more pharmacists train to become Independent Prescribers.
- **Blood Borne Virus Testing** – a screening service for individuals at risk of hepatitis C. This service was only provided at 1 pharmacy and is currently suspended due to the COVID-19 pandemic.
- **Sore Throat Test & Treat** – this specific service which offers a swab test and supply of antibiotics if indicated, was in the process of being rolled out in Hywel UHB at the end of 2019. 33 pharmacies were listed for the service by March 2020, following completion of training by pharmacists. The service was suspended at the end of March 2020 due to the COVID-19 pandemic.

**Hywel Dda UHB has developed and commissioned some local enhanced services from pharmacies. These are:**

- ▶ **Triage + Treat** – This service is only available in Hywel Dda UHB and provides triage and treatment, if appropriate for low level injuries. 50 pharmacies in Hywel Dda UHB provide this service.
- ▶ **INR Monitoring** – supports testing of patients' blood clotting time which is vital for patients treated with anti-coagulants. This is only commissioned where a need has been identified and only one pharmacy offers this service.
- ▶ **Palliative Care Medication Service** – specific pharmacies are required to hold an agreed list of end of life medication which may not normally be stocked, so that Health Care Professionals can access quickly when needed. Pharmacies are chosen, usually due to their extended opening hours and location. There are currently 16 pharmacies in Hywel Dda UHB who offer this service.

Many of the National and local enhanced services require a pharmacy to have a consultation area. From a survey conducted with pharmacy contractors, to inform the PNA, 95 confirmed the availability of a consultation room, with a further 3 reporting alternative arrangements were in place for confidential discussions.

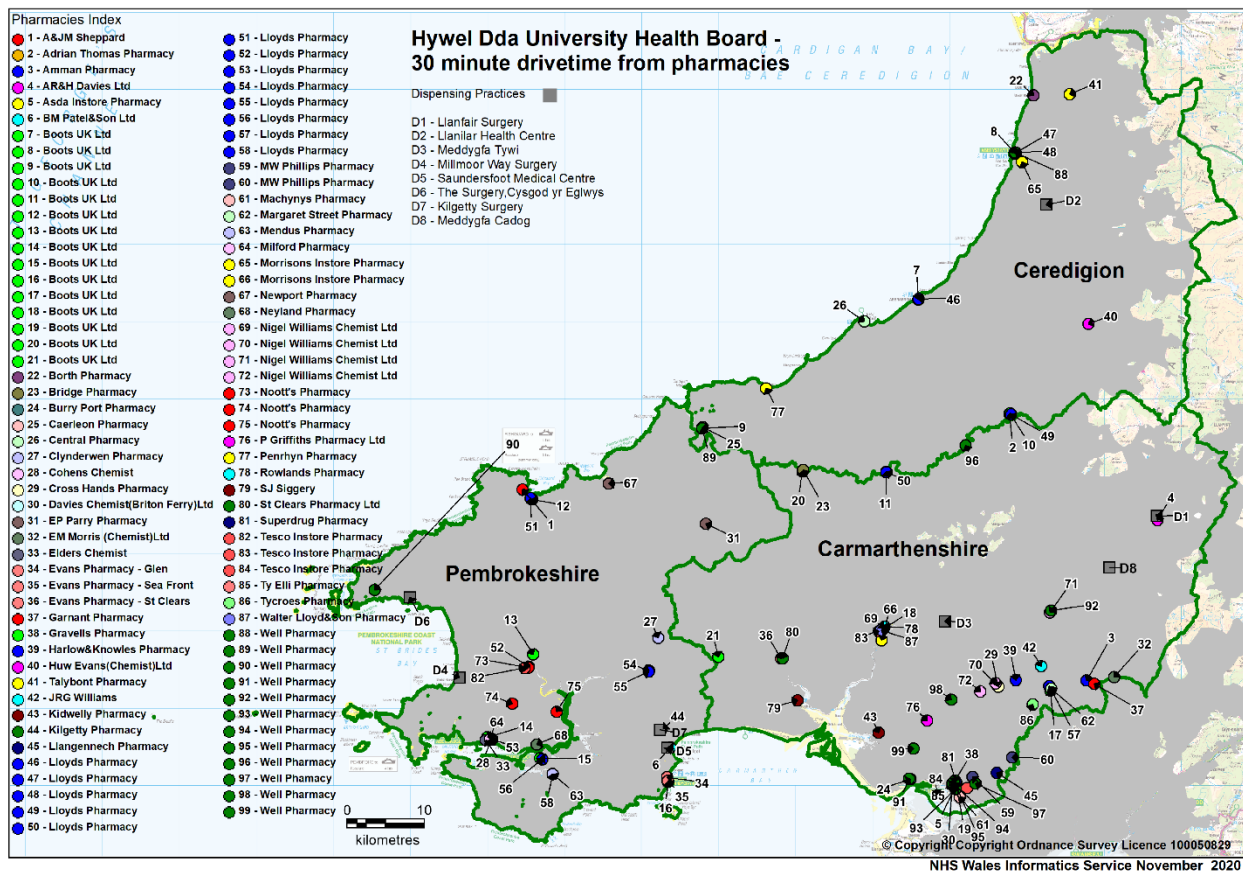
## Time Taken to Access a Pharmacy or Dispensing GP Practice - Drive time

When planning the PNA, it was agreed by the Health Boards PNA Steering Group that a maximum drive time to access a pharmacy should be 30 minutes within Hywel Dda UHB. Maps were obtained of the locations of all pharmacies and dispensing GP practices and a 30 minute drive time from each plotted. There were very few areas that did not fall within the 30 minute drive time and those

HDUHB: PNA Summary document



identified were either areas of very low population density or were served by pharmacies located in neighbouring health boards.



Approximately 99% of the Hywel Dda UHB population live within 30 minute drive of a pharmacy.

The 2011 census highlighted that around 18% of households do not have access to a car or van. It is likely that a high percentage of households that don't have access to a car will live in an urban area and walking to a pharmacy may be an option.

Whilst not an NHS service, 63 pharmacies offer a free medication delivery service for patients and a further 26 offer the service to specific patient groups e.g. housebound, elderly, vulnerable or shielding. With a total of 89 pharmacies offering delivery of medication, those that are unable to access a pharmacy should be able to make use of this non-NHS funded service.

**From the results of the public survey, it was noted that:**

- ▶ **74% of the respondents travelled by car to a pharmacy.**
- ▶ **98% of respondents said that travel time to a pharmacy was within 30 minutes**
- ▶ **78% said that travel time was less than 15 minutes.**



## Health Needs of the Population of Hywel Dda UHB

In 2019 the population of Hywel Dda UHB was 387,284 people. Just under 83,500 people were aged 65-84 years and around 12,400 people were aged 85 years and over.

The Welsh Index of Multiple Deprivation (WIMD) is the official measure of relative deprivation for areas in Wales. It identifies areas with the highest concentration of several different types of deprivation, such as income, employment, health, housing, access to services. All of Wales is divided into 1,909 Lower Super Output Areas (LSOAs) and Hywel Dda UHB has 22 of these in its most deprived 0-20%.

- 12 are found in Carmarthenshire
- 8 in Pembrokeshire and
- 2 in Ceredigion

The greatest percentage of the population in Hywel Dda UHB is White British or Irish at 97.1% (374,300), according to the 2011 census. Black, Asian and Minority Ethnic (BAME) groups represent 2.9% (11,200) of the total Hywel Dda UHB Population.

The Welsh average for life expectancy for men is 78.3 and for women 82.2<sup>1</sup>. The county within Hywel Dda UHB with the highest male and female life expectancy is Ceredigion at 80.1 and 83.9 respectively. This is followed by Pembrokeshire with 79.5 (male) and 82.9 (female) then Carmarthenshire at 78.6 (male) 82.6 (females). Each county has a slightly better life expectancy than the Welsh average.

Amman Gwendraeth locality has the highest prevalence of diabetes followed by Llanelli and South Pembrokeshire.

Teenage pregnancy rates in Hywel Dda UHB are below the Welsh average (20.2/1000 females under the age of 18). The highest Hywel Dda UHB rates is in Pembrokeshire (19.3/1000 females under 18) followed by Carmarthenshire (18.4) and Ceredigion (12).

In Hywel Dda UHB 20% of the adult population drink above the recommended guidelines for weekly alcohol consumption.

In Hywel Dda UHB 59% of the adult population are overweight or obese this is slightly below the Welsh average of 60%. Obesity prevalence continues to be highest in Amman Gwendraeth followed by Llanelli and Tywi Taf locality.

While smoking prevalence in Hywel Dda UHB has declined in the last decade to just over 18% there are communities where rates of smoking have not changed. In parts of Llanelli 27-31% of the adult population still smoke and in Pembrokeshire (Pembroke Dock and Neyland) 23-27% of the adult population smoke.

---

<sup>1</sup> Life Expectancy and Mortality in Wales, Public Health Wales Observatory 2020.  
HDUHB: PNA Summary document



## Engagement for Preparation of the PNA

The Hywel Dda UHB PNA has been prepared using data from a wide range of sources including, Public Health Wales, Local Authorities, NHS Wales Informatics Service and NHS Wales Shared Services Partnership.

As well as sourcing data on services and activity, engagement was undertaken with the public on current pharmaceutical services. Pharmacy contractors and dispensing GP practices were also invited to provide information to support development of the PNA.

A **public engagement** exercise took place from the 12<sup>th</sup> November to 10<sup>th</sup> December 2020. Engagement took the form of an on-line survey, with paper copies also available.

1,370 responses were submitted from across the Health Board area. This was evidenced by postcodes provided by respondents.

The largest group of respondents were aged 46-64 years (39.47%) followed closely by 65-79 years (34.87%).

Full details of the questions and responses for the public engagement can be found in Appendix G & H of the full PNA document.

The main points highlighted from the public engagement were:

- ▶ At least 50% of respondents were aware that pharmacies offered all 6 National enhanced services listed in the survey [Common Ailments, Emergency Contraception, Emergency Medication Supply, Influenza Vaccinations, Smoking Cessation Services, Needle Exchange]
- ▶ 84% were aware of the Common Ailments Service
- ▶ 86% were aware that pharmacies provided NHS influenza vaccinations
- ▶ The most convenient day to visit a pharmacy was a Friday (59.2%) with Tuesday being the least convenient (52.6%), though there was little difference between the other weekdays
- ▶ The most convenient time to visit a pharmacy was between 9.00am and 6.00pm, this was selected by 87% of respondents
- ▶ 74% of the respondents travelled by car to a pharmacy
- ▶ 73% indicated they always use the same pharmacy
- ▶ 25% indicated they use different pharmacies but would prefer to visit one most often with only 2% stating they always use different pharmacies
- ▶ Choice of pharmacy was mainly influenced by proximity to home, work or GP practice
- ▶ 66% felt able to discuss something privately with a pharmacist

► Respondents noted the length of travel time to a pharmacy as being

- Less than 5 minutes for 26%
- 5-15 minutes for 52%
- 15-30 minutes for 20%
- 30 minutes or more for 2%

The survey provided an opportunity for respondents to include any other information about local pharmacy services. 504 chose to provide additional comments.

322 of these comments were complimentary about pharmacy services and covered topics such as; how helpful and professional pharmacy staff were, and how supportive pharmacy staff had been during the pandemic.

61 were general comments e.g. medication delivery should be part of NHS service, pharmacy needed in “X” location, useful to have an appointment system, need more pharmaceutical services available through medium of Welsh.

121 comments were negative and covered topics such as; lunchtime closures being inconvenient, the need for longer opening hours for people that work, poor customer service, stock issues and missing items, medication deliveries, staffing levels at pharmacies.

Analysis of the responses from the public engagement exercise, evidenced that pharmacies and the services they offer are well regarded and valued by the public. There was a reasonable level of knowledge of the services offered, though 39% did not know that delivery of medication was not part of the NHS pharmacy service. There was a clear preference to use a regular pharmacy and the most convenient time to access pharmacy services was on a weekday between 9.00am and 6.00pm.

---

Existing **pharmacy contractors** were asked to complete a questionnaire to support the development of the PNA, which asked about facilities available, the need for services not currently commissioned in the area and whether the pharmacy had sufficient capacity to meet an increased demand for pharmaceutical services.

All of the 99 pharmacies on the Health Boards pharmaceutical list at the time of the survey completed the questionnaire. The survey was conducted during December 2020 and 1 pharmacy closed in January 2021.

Details of the questionnaire responses can be found in Section 1.5.4 of the full PNA and a copy of the pharmacy contractor questionnaire is included in Appendix I.

The key highlights from the questionnaire responses are:

96 pharmacies confirmed the availability of a consultation room, with 3 reporting that alternative arrangements for confidential discussions were in place.

83 pharmacies confirmed there was sufficient capacity within their existing premise and staffing levels to manage an increase in demand for pharmaceutical services in their area.

12 pharmacies did not have sufficient capacity at present, but could make adjustments to manage an increase in demand for pharmaceutical services.

4 pharmacies did not have sufficient capacity and would have difficulty in managing any future increase in demand for pharmaceutical services. 1 of these pharmacies has since closed.

The pharmacy contractor questionnaire responses evidence that there is a high number of pharmacies that have consultation areas. These are vital for the provision of certain enhanced services and to support an increase in the range of services that pharmacies could offer in future. The responses also confirmed that the majority of pharmacies, (95), have capacity to manage or make adjustments to manage an increase in demand for pharmaceutical services.

---

All 6 **dispensing GP practices** in Hywel Dda UHB were invited to complete a questionnaire which captured information on opening hours of the dispensaries, pharmaceutical services offered and capacity to manage any increases in demand.

Details of the questionnaire responses can be found in Section 1.5.4 of the full PNA and a copy of the dispensing GP practice questionnaire is included in Appendix J.

The 6 dispensing GP practices operate dispensaries over 8 sites.

The main points from the responses are:

- ▶ 5 dispensaries are located in main surgery sites and these operate opening hours of 8.00/8.30am to 6.00/6.30pm, on all or most weekdays.
- ▶ 3 dispensaries are located in branch surgeries and operate opening hours that reflect the part-time use of the premises.
- ▶ 2 dispensing GP practices have sufficient capacity within existing premises and staffing levels to manage an increase in demand for pharmaceutical services.
- ▶ 3 could meet an increase in demand with some adjustments and 1 would have difficulty in meeting any additional increase.

The number of patients that are eligible to receive dispensing services from dispensing GP practices is fairly static due to the criteria that is set. As at January 2021, the number of patients that were listed for dispensing services by all the dispensing GP practices was 17,396. This equates to 4.4% of the Hywel Dda UHB population.

There is sufficient capacity within the existing dispensing GP practices to manage any potential increase in demand for essential pharmaceutical services during the lifespan of the PNA.

## Future needs for pharmaceutical services

The PNA also looks at potential changes during the lifetime of the document that is, October 2021 to September 2026.

The overall population of Hywel Dda UHB is predicted to remain fairly static and small increases are likely to be as a result of inward migration and the increase in housing stock as a result of new building developments.



The 3 local authorities that are within the geographical area of Hywel Dda UHB provided details of large housing developments expected to be completed within the next 5 years. For the purposes of the PNA, large developments were defined as those that involved a minimum of 100 new homes.

The large housing developments identified were:

County	Area	Primary Care Locality	Number of New Homes in Next 5 Years
Carmarthenshire	Cross Hands	Amman Gwendraeth	101
	Burry Port	Llanelli	105
	Trimsaran	Llanelli	139
	Carmarthen (west)	Tywi Taf	310
Pembrokeshire	Haverfordwest	North Pembs	240
	Pembroke	South Pembs	139
	Pembroke Dock	South Pembs	100
	Carew	South Pembs	100

There were no identified developments of at least 100 houses in the next 5 years within Ceredigion.

Currently a quarter of the population is aged 65 years and over and this figure is predicted to rise and by 2043 will be over 31%. An increase in the number of older people is likely to lead to a rise in the prevalence of chronic conditions such as circulatory and respiratory disease. This could place greater demand on pharmaceutical services as those with chronic conditions are more likely to be on regular medication and will need pharmaceutical services.



From the pharmacy contractor questionnaire, 95 pharmacies stated that they had capacity to manage an increase in demand or could make adjustments to manage an increase in demand for pharmaceutical services. The PNA concludes that there is sufficient provision of pharmaceutical services to meet demand over the next 5 years.

## Does the PNA identify any gaps in pharmacy service?

### Conclusions

The PNA includes sections on the provision of pharmaceutical services for each of the 7 primary care localities. See sections 8-14.

From the assessment of pharmaceutical services currently available, the expected need for future services, the data gathered from the public engagement and the questionnaire responses from existing pharmacy contractors and dispensing GP practices, a number of conclusions have been reached as to the adequacy of pharmaceutical services within Hywel Dda UHB.





The full list of conclusions are contained within Section 15 of the PNA. The main conclusions are listed below:

**The residents of Hywel Dda UHB are well served in relation to the number of pharmacies per 10,000 population and has a higher ratio compared to the average for Wales.**

**Access to essential pharmaceutical services is good and no gaps in the current provision of these services was identified during normal working hours, outside normal opening hours or on weekends.**

**Access to advanced services is very good and no gaps in the current provision of these services was identified.**

**Access to enhanced services is good. The number of pharmacies providing specific enhanced services could be increased and the Health Board will work with pharmacy contractors on uptake of these services.**

**There were no current gaps identified in the provision of GP dispensing services.**

The PNA also looks at potential changes to demand for pharmaceutical services over the lifetime of the document. The PNA concludes that:

**The provision of essential and advanced services is sufficient to meet the future needs of the residents of Hywel Dda UHB during the 5 year lifetime of this PNA.**

**The provision of enhanced services is sufficient to meet the future needs of the residents of Hywel Dda UHB during the 5 year lifetime of this PNA. The number of pharmacies providing specific enhanced services could be increased and the Health Board will work with pharmacy contractors on uptake of these services.**

**There were no gaps identified in the future provision of GP dispensing services.**

Please give us your views on the Hywel Dda UHB draft PNA by completing the consultation survey.

The survey can be completed on line at [.....] or by using the QR code below.

A paper version of the consultation survey can be requested by telephoning [01554 783746](tel:01554783746)

**The consultation survey will close on the 12<sup>th</sup> June 2021.**

The following organisations have been identified as parties that must be consulted with as set out in the National Health Service (Pharmaceutical Services) (Wales) Regulations 2020, in addition to members of the public.

- Local Pharmaceutical Committee for Wales (Community Pharmacy Wales)
- Dyfed Powys Local Medical Committee for Health Board area
- Pharmacy contractors listed on the Hywel Dda UHB pharmaceutical list
- Any pilot scheme pharmacy with whom Health Board has made arrangements for the provision of any local pharmaceutical services (none in Hywel Dda UHB)
- Dispensing GP practices
- Any organisation with whom the Health Board has made arrangements for the provision of dispensing services
- GP Practices in Hywel Dda UHB
- Hywel Dda Community Health Council or any other group representing patients, consumers or a community in this area with an interest in the provision of pharmaceutical services in its area, including Patient Participation Groups and Siarad Iechyd/Talking Health members
- West Wales Care Partnership
- Local authorities – Carmarthenshire, Ceredigion and Pembrokeshire County Councils
- NHS Trust – Welsh Services Ambulance Services Trust
- Neighbouring Local Health Boards – Swansea Bay UHB, Powys THB, Betsi Cadwaladr UHB



GIG  
CYMRU  
NHS  
WALES

Bwrdd Iechyd Prifysgol  
Hywel Dda  
University Health Board

DIOGEL | CYNALIADWY | HYGYRCH | CAREDIG  
SAFE | SUSTAINABLE | ACCESSIBLE | KIND



HDUHB: PNA Summary document



DIOGEL | CYNALIADWY | HYGYRCH | CAREDIG  
SAFE | SUSTAINABLE | ACCESSIBLE | KIND