

# A Healthier Mid & West Wales

## Technical Appraisal Group

### Criteria Weighting Workshop

25<sup>th</sup> May 2022



# A HEALTHIER MID AND WEST WALES (AHMWW) WEIGHTING OF TECHNICAL CRITERIA WORKSHOP 25<sup>TH</sup> MAY 2022 AGENDA

- **Introduction**

**Paul Williams, Assistant Director of Strategic Planning/PBC Programme Manager, HDUHB**  
**Nicholas Duffin, Consultation Institute**

- Running order of the event
- Individuals involved
- Meeting etiquette
- The objective
- The process undertaken so far
- The process to be undertaken today

- **Question/Answer session**

- Opportunity for attendees to ask questions
- Review of any advance questions

- **COMFORT BREAK**

- **Presentation of the criteria - Questions/Answers**

- **Weighting exercise**

- High level review of criteria
- Attendees score the criteria

- **COMFORT BREAK**

- **Results are reviewed**

- **Next steps**

# Introduction

Thank you for agreeing to participate.

This is one of 4 appraisal workstreams. This the **Technical** workstream

We have a single purpose today – to **‘Weight’** the technical criteria

UHB commitment - target 52% Public Representation in the workshop decision making

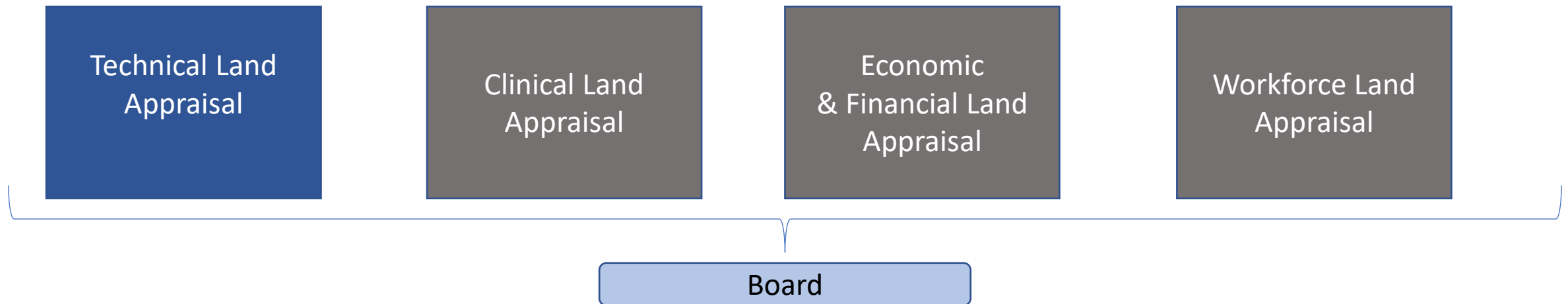
## Where we've come from ... Engagement and Consultation 2017 and 2018

- We ran a formal wide scale clinically led engagement exercise over the summer of 2017
- We developed 4 principles to underpin our strategy: Safe, Sustainable, Accessible, and Kind
- We developed 32 different options to address all the issues we heard. We established a group to develop evaluation criteria and evaluate options. By early 2018 the 32 options were honed down to 3 options
- We worked with the Consultation Institute to plan our consultation. We called this consultation in 2018 'Our Big NHS Change'. We held an average of 10 engagement sessions per week for 12 weeks
- We approved our Health & Care Strategy at the end of 2018, 'A Healthier Mid and West Wales, our future generations living well' .

## Where we've come from ... Board approval of clinical recommendations

- **An integrated community model**, based on an integrated social model for health and well-being (the model).
- Working with partners, focused on **prevention, well-being, early intervention** and help build resilience to enable people to live well within their own communities.
- The development of a **plan for the existing Community Hospitals**, working with local communities.
- This plan will be focussed on the provision of ambulatory care including out-patient services, diagnostics, treatment, observation, rehabilitation and end of life care.
- Part of the solution - **A new urgent and planned care hospital** in the zone between Narberth and St Clears

## Land Selection – Appraisal Workstreams



## Land Hurdle Criteria

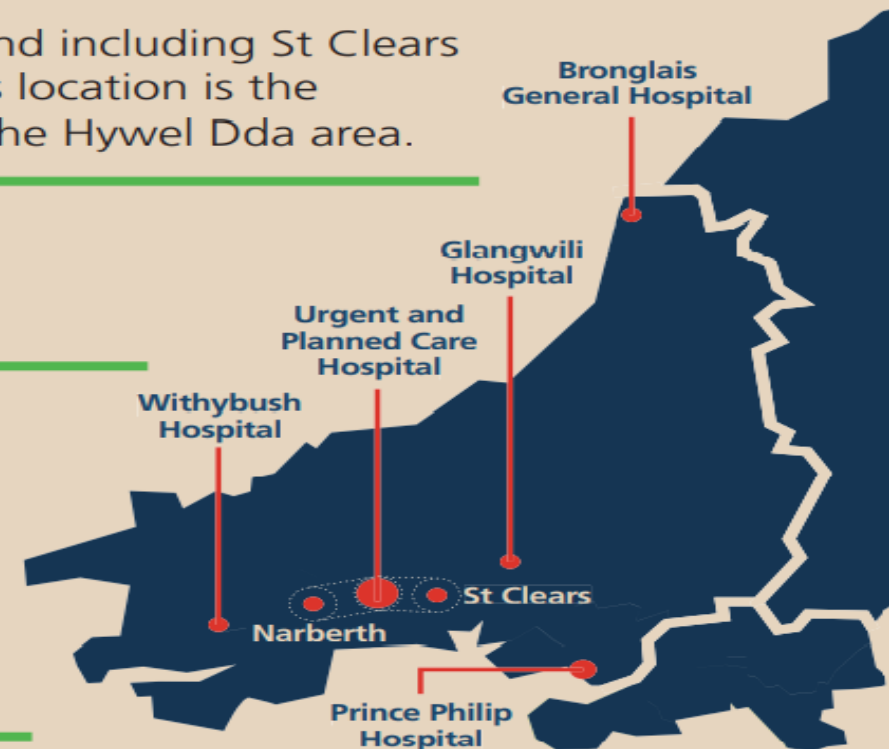
- Public Engagement May to June 2021 “Building a healthier future after COVID-19” included
  - seeking public nominations for land for the new hospital,
  - public opinion on the most important issues to consider
  - key hurdle criteria to be applied to arrive at a long list

**1** The nominated site must be within the zone between and including St Clears in Carmarthenshire and Narberth in Pembrokeshire. This location is the most central to most of the population in the south of the Hywel Dda area.

**2** The nominated site should be a minimum of 35 acres of reasonably developable land.

**3** The nominated site should have realistic prospects of obtaining planning permission for a new hospital.

**4** There should be appropriate transport infrastructure for a major hospital site.





## Land - Progress To Date

- 22<sup>nd</sup> October 2021, a Longlist to Shortlist workshop was held, a provisional shortlist of sites was recommended with further investigation to confirm some technical issues
- 17<sup>th</sup> February 2022 a second workshop confirmed a shortlist of 5 sites for technical appraisal.
  - 1 Narberth, 2 Whitland and 2 St Clears
- 26<sup>th</sup> April 2022, the technical evaluation criteria were agreed
- Today is the next step, to 'weight' the criteria in advance of a workshop to score the shortlisted sites from a technical perspective



## Undertaking the weighting of criteria

Today we are going to ask you to provide weightings to the 7 different criteria.

You are going to do this using a facility called Mentimeter.

By going to a specific Web page, you will be able to move a button for each criterion to give it a value of importance.

This is what it looks like.....

14:13 64%

Voting Silk Home

menti.com/ud33bfaens

# Mentimeter

Please set the buttons to reflect how important you think each criteria are, compared with one another

Site conditions Skip

1 Very low 10 Very high

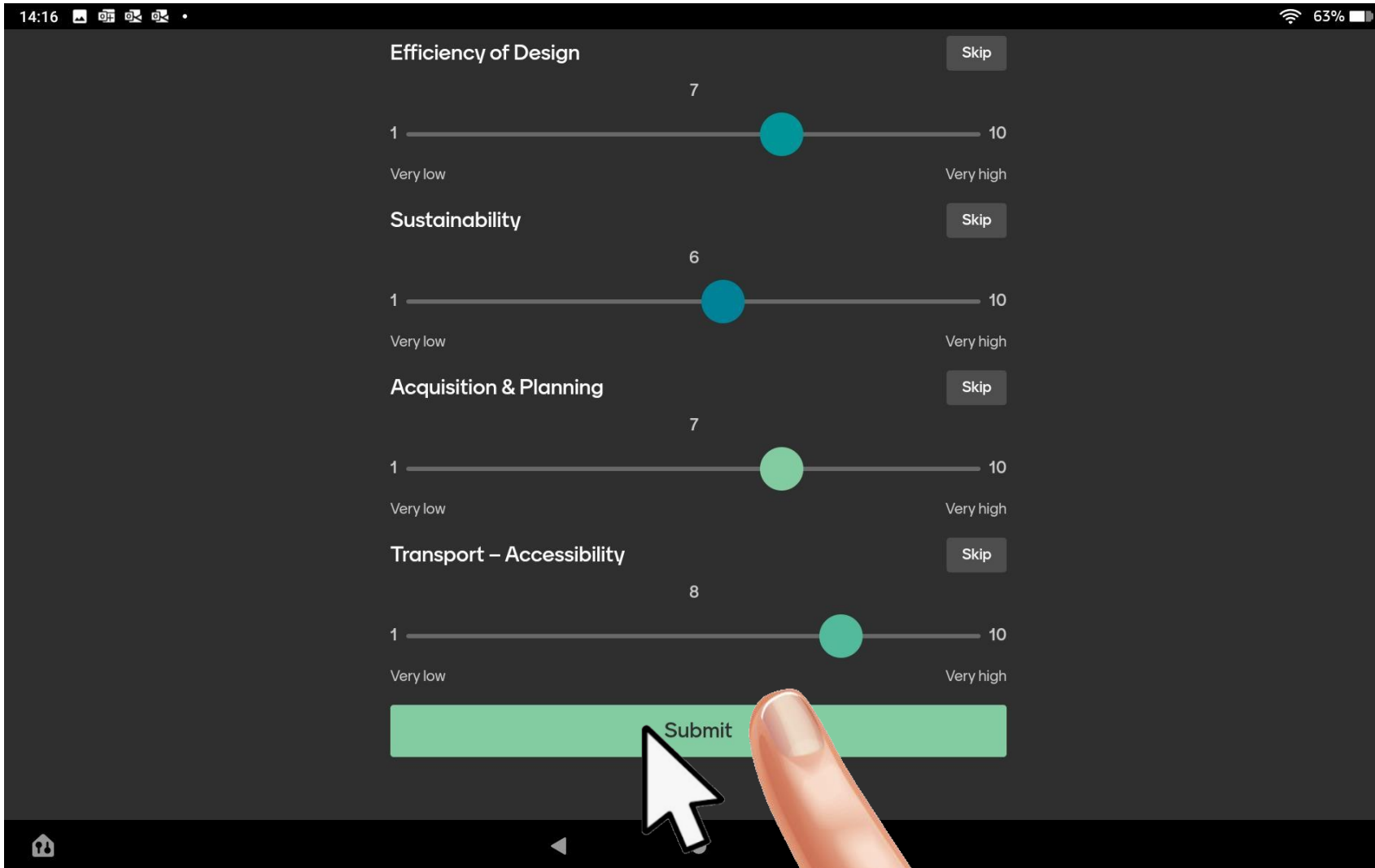
Infrastructure, Access & Active Travel Skip

1 Very low 10 Very high

Environment and Ecology Skip

1 Very low

You will initially see this screen (or similar).



14:16 63%

Efficiency of Design Skip

1 7 10  
Very low Very high

Sustainability Skip

1 6 10  
Very low Very high

Acquisition & Planning Skip

1 7 10  
Very low Very high

Transport - Accessibility Skip

1 8 10  
Very low Very high

Submit

When you have finished you will have moved the buttons to set different values and 'Submitted' them.

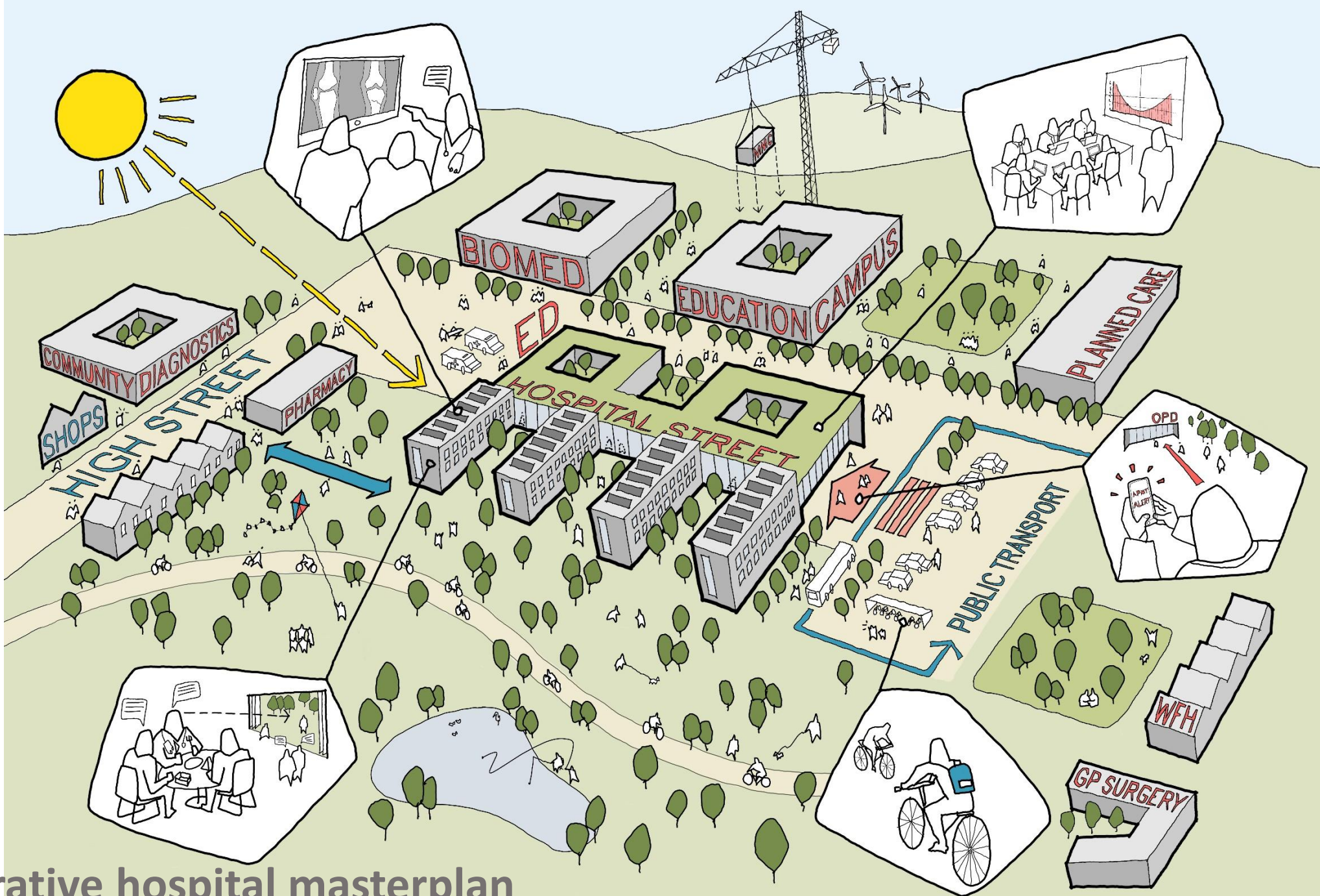
But first we must familiarise you with the information you need to consider.

# NEXT STEPS

# THERE WILL NOW BE A BREAK

# INTRODUCTION TO THE CRITERIA





Illustrative hospital masterplan



## Technical Criteria

1. Site conditions
2. Infrastructure, Access & Active Travel
3. Environment and Ecology
4. Efficiency of Design
5. Sustainability
6. Acquisition & Planning
7. Transport – Accessibility

## Technical Criteria

	Weighting	Site X	Site Y	Site Z
1. Site conditions	14.33%	5	6	5
2. Infrastructure, Access & Active Travel	14.33%	6	5	7
3. Environment and Ecology	14.33%	4	5	5
4. Efficiency of Design	14.33%	6	5	5
5. Sustainability	14.33%	7	4	4
6. Acquisition & Planning	14.33%	4	4	6
7. Transport – Accessibility	14.33%	5	6	4
	Score	5.29	5.00	5.14

## Technical Criteria

	Weighting	Site X	Site Y	Site Z
1. Site conditions	25.0%	5	6	5
2. Infrastructure, Access & Active Travel	10.0%	6	5	7
3. Environment and Ecology	10.0%	4	5	5
4. Efficiency of Design	5.0%	6	5	5
5. Sustainability	5.0%	7	4	4
6. Acquisition & Planning	10.0%	4	4	6
7. Transport – Accessibility	35.0%	5	6	4
	Score	5.05	5.45	4.90

## Technical Criteria

### 1. Site conditions

### 2. Infrastructure, Access & Active Travel

### 3. Environment and Ecology

### 4. Efficiency of Design

### 5. Sustainability

### 6. Acquisition & Planning

### 7. Transport – Accessibility

*Consider the importance of the existing site characteristics including visible elements such as site shape and slope and above ground utilities, and hidden aspects such as ground conditions, contamination from previous uses and below ground utilities infrastructure.*

*Site characteristics will have a significant impact on the potential to deliver a low carbon building.*

*Weighting should consider the importance of existing site characteristics on the ability to deliver an optimum masterplan for the new Urgent & Planned Care Hospital*



# 1 Site Conditions





## Technical Criteria

1. Site conditions
- 2. Infrastructure, Access & Active Travel**
3. Environment and Ecology
4. Efficiency of Design
5. Sustainability
6. Acquisition & Planning
7. Transport – Accessibility

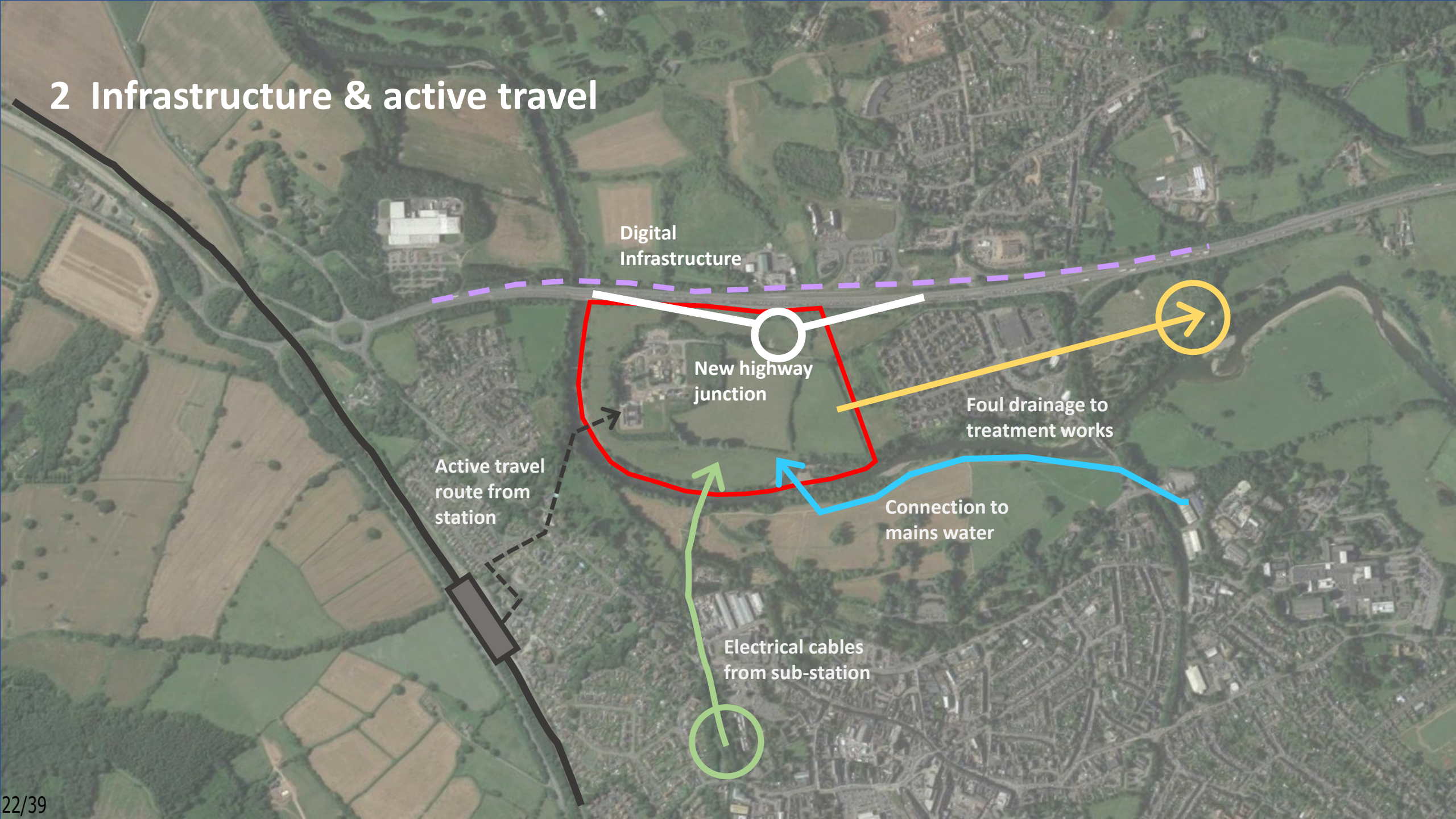
*Consider transport access including the impact of new highways works, future public transport links and the potential to promote 'active travel' through improved infrastructure for cycling & walking.*

*Also the impact of new off-site utilities infrastructure for example electrical, digital, drainage etc*

*Weighting should consider the potential impact of transport and utilities infrastructure and the potential to address the Welsh Government active travel and carbon reduction policies.*



## 2 Infrastructure & active travel





## Technical Criteria

1. Site conditions
2. Infrastructure, Access & Active Travel
- 3. Environment and Ecology**
4. Efficiency of Design
5. Sustainability
6. Acquisition & Planning
7. Transport – Accessibility

*Consider the importance of environmental and ecological issues such as flood risk and water quality, existing habitats including trees and hedgerows.*

*Also the potential impact (positive and negative) of the development including the potential to improve biodiversity and provide more green space in the future.*

*Weighting should consider the importance of ecology and biodiversity and the impact on staff and patients.*



### 3 Environment & Ecology



River

Existing trees &  
hedgerows

Existing  
pond

New  
attenuation  
feature

Nature reserve



## Technical Criteria

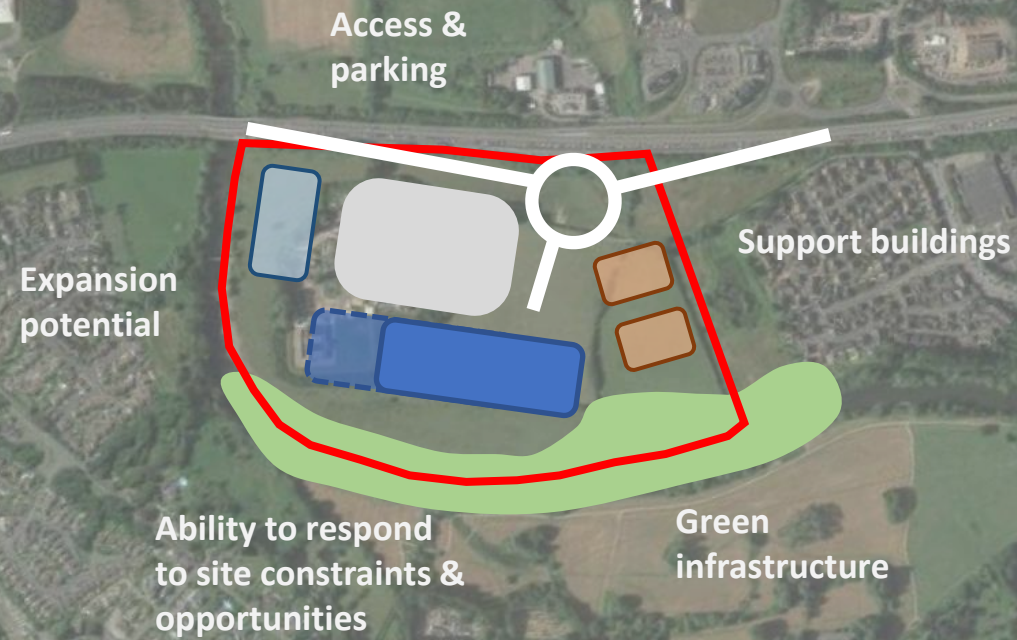
1. Site conditions
2. Infrastructure, Access & Active Travel
3. Environment and Ecology
- 4. Efficiency of Design**
5. Sustainability
6. Acquisition & Planning
7. Transport – Accessibility

*Consideration of the potential to achieve an efficient and robust masterplan on the site, and to allow for future expansion with minimal visual impact on the surrounding area and impact on local communities.*

*Weighting should consider the importance of how the site supports the development of an efficient masterplan.*



## 4 Efficient design





## Technical Criteria

1. Site conditions
2. Infrastructure, Access & Active Travel
3. Environment and Ecology
4. Efficiency of Design
- 5. Sustainability**
6. Acquisition & Planning
7. Transport – Accessibility

*Consider how the site supports delivery of a sustainable masterplan.*

*Each site will be assessed against a range of criteria using the Building Research Establishment Environmental Assessment Method (BREEAM) assessment which will review criteria such as Land use, ecology, transport and pollution.*

*Other criteria such as energy use, materials and operational management will form part of a more detailed assessment at the next design stage.*

*Achieving a minimum 'Excellent' BREEAM rating will be a condition attached to future funding.*



# 5 Sustainability



Orientation

Active travel

Green infrastructure

Local amenities



## Technical Criteria

1. Site conditions
2. Infrastructure, Access & Active Travel
3. Environment and Ecology
4. Efficiency of Design
5. Sustainability
- 6. Acquisition & Planning**
7. Transport – Accessibility

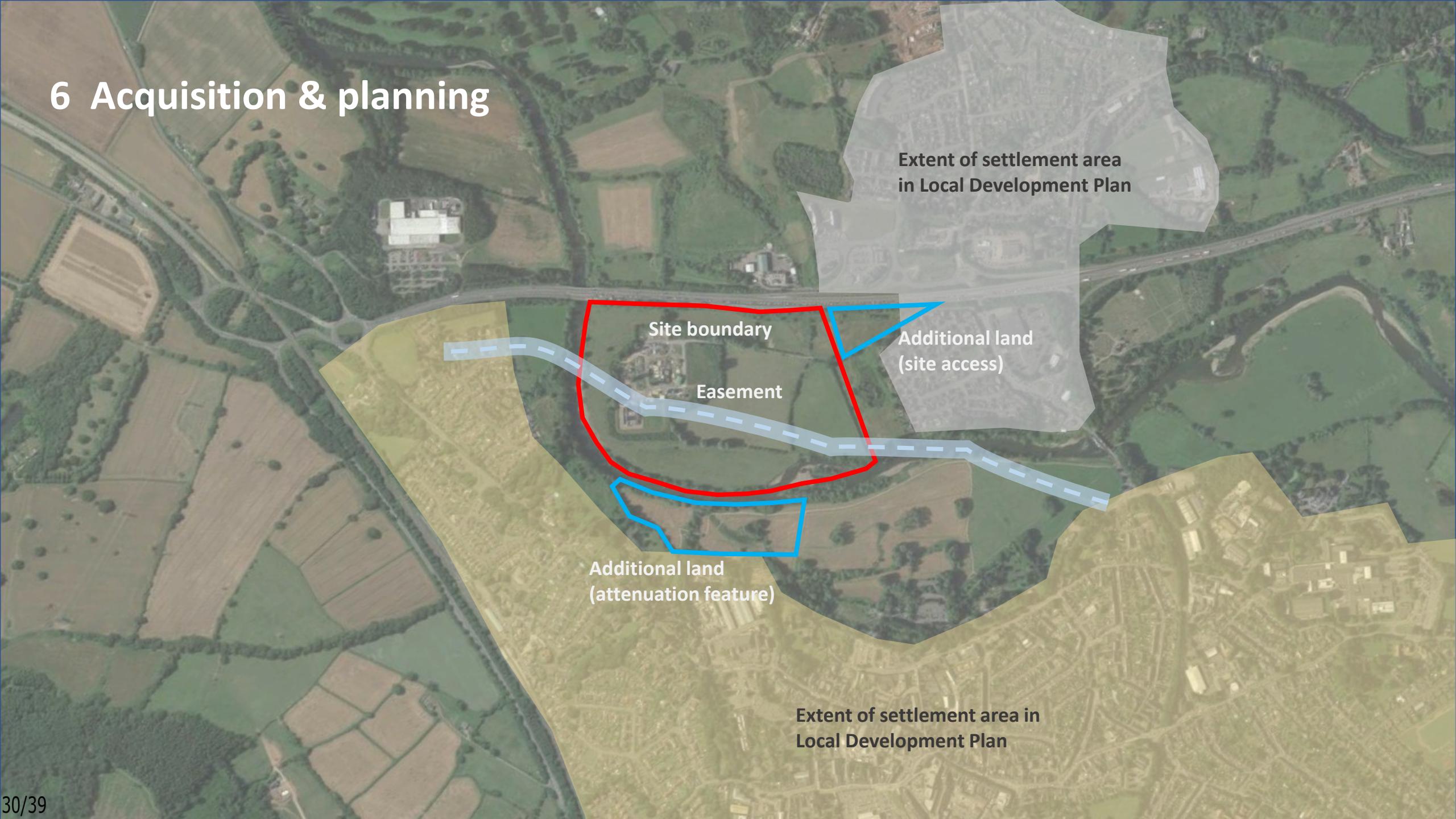
*Consideration of statutory issues relating to land purchase and planning.*

*Weighting should consider importance of land ownership and whether additional land is required for 'off-site' purposes such as highways access and surface water attenuation.*

*Also alignment with national and local planning policy, the likelihood of achieving planning approval and impacts on easements, rights of way and land covenants.*



# 6 Acquisition & planning



## Technical Criteria

1. Site conditions
2. Infrastructure, Access & Active Travel
3. Environment and Ecology
4. Efficiency of Design
5. Sustainability
6. Acquisition & Planning
- 7. Transport – Accessibility**

*Consider access to the new hospital site for staff, patients and visitors via all modes of travel (car, public transport, walking, cycling etc)*

*Also consider the importance of ambulance access.*

*Weighting should consider the importance of accessibility and journey times for all building users and the potential to reduce the Health Board's carbon footprint.*



# 7 Transport & Accessibility



## Technical Criteria – How do they compare in importance?

1. **Site conditions:** *Shape and slope, orientation, ground contamination, existing utilities*
2. **Infrastructure, Access & Active Travel:** *Highways works, new utility connections*
3. **Environment and Ecology:** *Flood risk, water quality, habitats, future biodiversity*
4. **Efficiency of Design:** *Attractive site plan, future expansion, community impact*
5. **Sustainability:** *Delivering a masterplan fit for future generations*
6. **Acquisition & Planning:** *Land purchase, town planning, easements and covenants*
7. **Transport – Accessibility:** *Travel times (public transport, private transport, cycling, walking)*



# MENTIMETER WEIGHTING OF THE CRITERIA

# THERE WILL NOW BE A BREAK

# CRITERIA WEIGHTING RESULTS



# NEXT STEPS

## Next Steps

- Technical (Scoring) Workshop 28<sup>th</sup> June 2022
  - To review each site location against the agreed criteria
  - To award a score for each site against each criteria
  - To arrive at a rank order of sites from the technical perspective, for Health Board consideration
- To complete the work relating to Clinical, Workforce and Financial/Economic matters for Board consideration

Thank you!

